

| INDEX OF SHEETS | | |
|-----------------|--|--|
| SHEET NO. | TITLE PAGE | CRUSHED |
| 1 | 224 TYPICAL CROSS-SECTION OF IMPROVEMENT | GRAVEL MIXED-IN-PLACE SURFACE COURSE |
| 2 | 3 BANKING AND WIDENING TABLES | |
| 3 | 4-8 PLAN AND PROFILE STA. | |
| 4 | 9 STANDARD STRUCTURE SHEET | S 28: PIPE CULVERTS |
| 5 | 10 | S 30: STANDARD UNDERDRAIN & GUARD RAIL |
| 6 | 11 | S 31: BOUNDARY MARKERS |
| 7 | 12 | S 40: BARRICADES, SIGNS & LIGHTS |
| 8 | 13-24 CROSS SECTIONS | |

STANDARD STRUCTURE SHEETS APPROVED
BY THE CHIEF ENGINEER

S 28: JULY 11, 1933
S 30: AUG. 15, 1933
S 31: JULY 25, 1934

STATE OF VERMONT
STATE HIGHWAY DEPARTMENT

PLAN AND PROFILE OF PROPOSED
STATE HIGHWAY

FEDERAL AID PROJECT

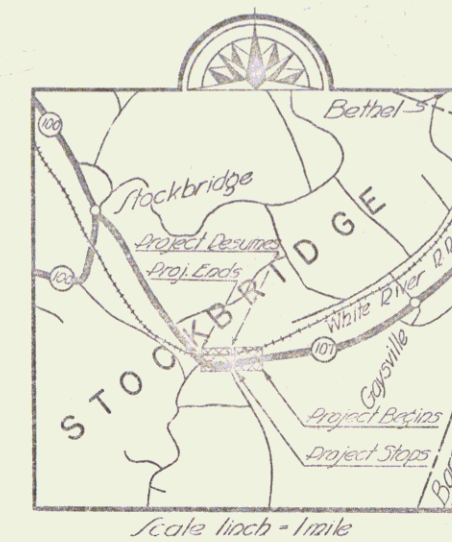
TOWN OF STOCKBRIDGE

BETHEL-RUTLAND ROAD

FROM A POINT 0.464 MILES EAST OF THE EAST END
OF THE STONY BROOK BRIDGE-WESTERLY (INCLUDING BRIDGE)
MILES TO A POINT 0.523 MILES FROM THE WEST END OF STONY
BROOK BRIDGE.

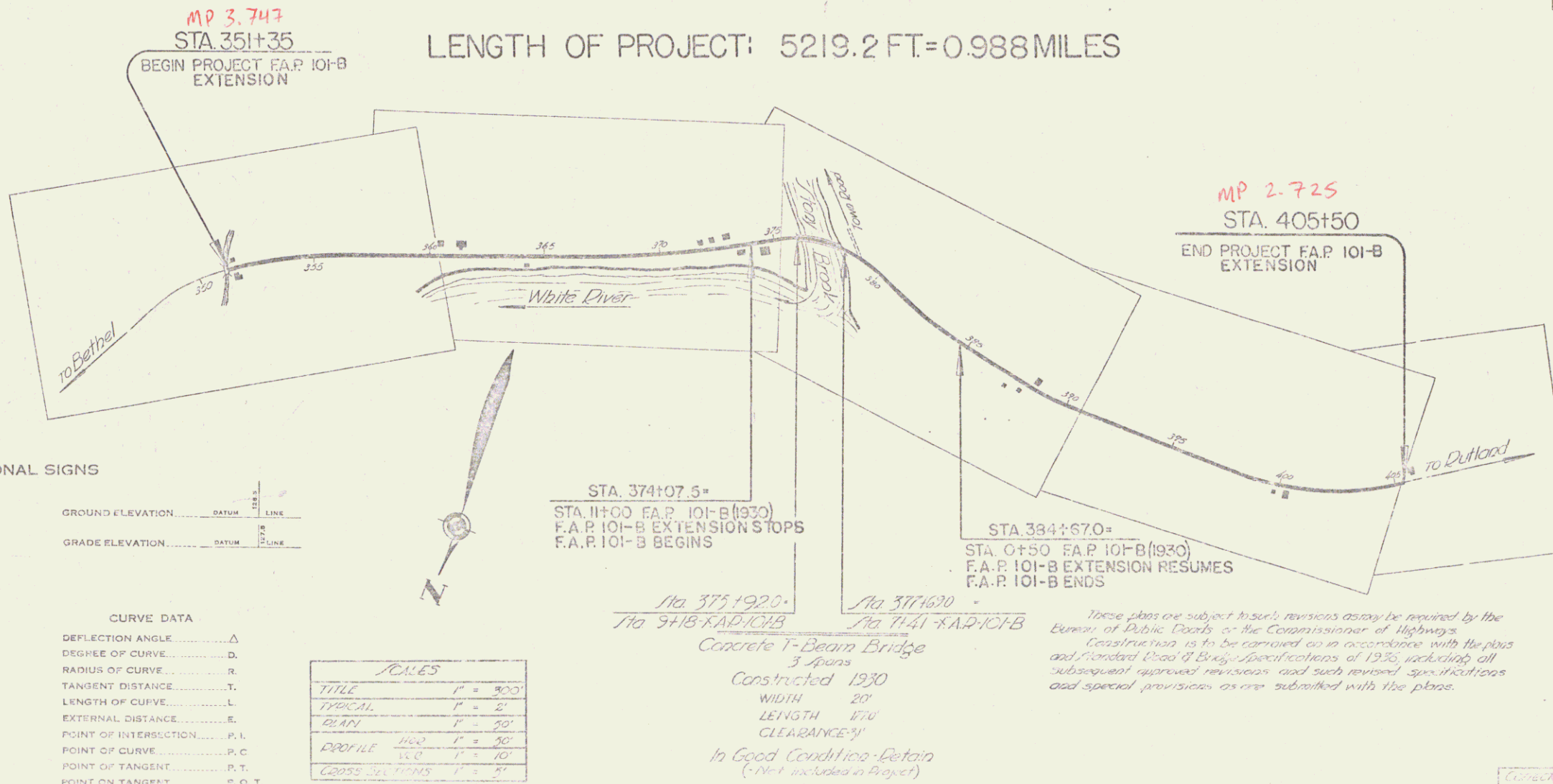
LENGTH OF PROJECT: 5219.2 FT.=0.988 MILES

| FED. ROAD DIST. NO. | STATE | FED. AID PROJ. NO. | LOCAL PROJ. NO. | SHEET NO. | TOTAL SHEETS |
|---------------------|-------|--------------------|-----------------|-----------|--------------|
| 9 | VT. | 101-B | 1337 | 1 | 29 |



(To Be Returned To H.O.W. Division)

101-B
PERPETUAL
RIGHT-OF-WAY DIVISION



CONVENTIONAL SIGNS

| | |
|-------------------|-----|
| COUNTY LINE | --- |
| TOWN LINE | --- |
| FENCE LINE | --- |
| STONE WALL | --- |
| UNFENCED PROPERTY | --- |
| GUARD RAIL | --- |
| TRAVELED WAY | --- |
| RAILROAD | --- |
| RETAINING WALL | --- |
| CENTER LINE | --- |
| SURVEY LINE | --- |
| CULVERT | --- |
| DROP INLET | --- |
| TROLLEY POLE | --- |
| POWER POLE | --- |
| TELEPHONE POLE | --- |
| TREE | --- |
| HEDGE | --- |

| | | |
|------------------|-------|------|
| GROUND ELEVATION | DATUM | LINE |
| GRADE ELEVATION | DATUM | LINE |

| CURVE DATA | |
|-----------------------|----------|
| DEFLECTION ANGLE | Δ |
| DEGREE OF CURVE | D |
| RADIUS OF CURVE | R |
| TANGENT DISTANCE | T |
| LENGTH OF CURVE | L |
| EXTERNAL DISTANCE | E |
| POINT OF INTERSECTION | P. I. |
| POINT OF CURVE | P. C. |
| POINT OF TANGENT | P. T. |
| POINT ON TANGENT | P. O. T. |

| RULES | |
|----------------|-----------|
| TITLE | 1" = 100' |
| TYPICAL | 1" = 2' |
| PLAN | 1" = 20' |
| PROFILE | 1" = 10' |
| GROSS SECTIONS | 1" = 2' |

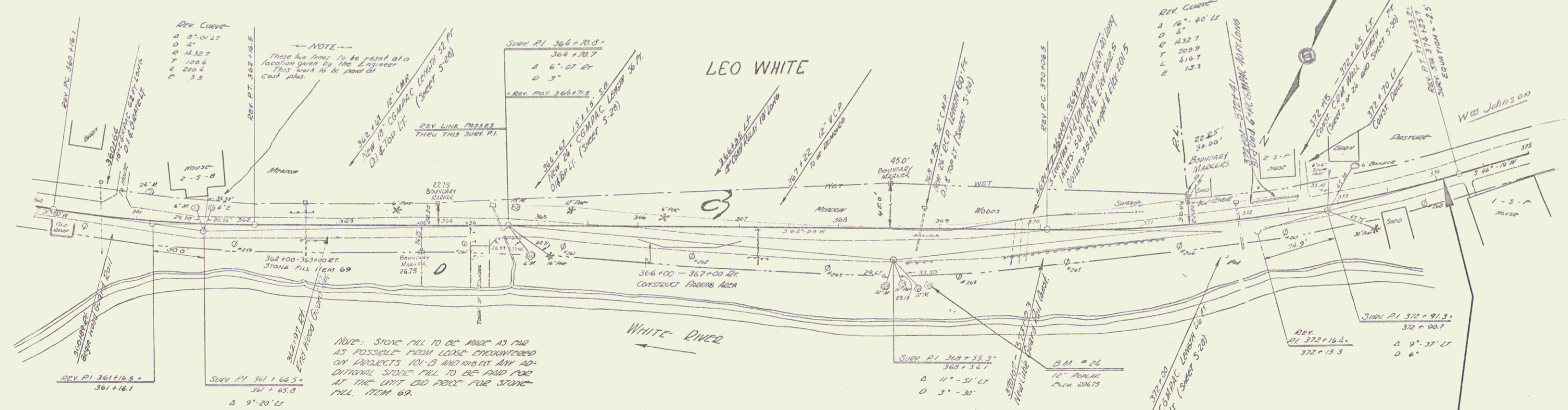
Project FAP 101-B
Pin # 000007
Route VT 107
Date 8/3/1936

APPROVED: Aug 3, 1936
H. E. Laing
COMMISSIONER OF HIGHWAYS
SUBMITTED BY ORDER OF THE STATE HIGHWAY BOARD

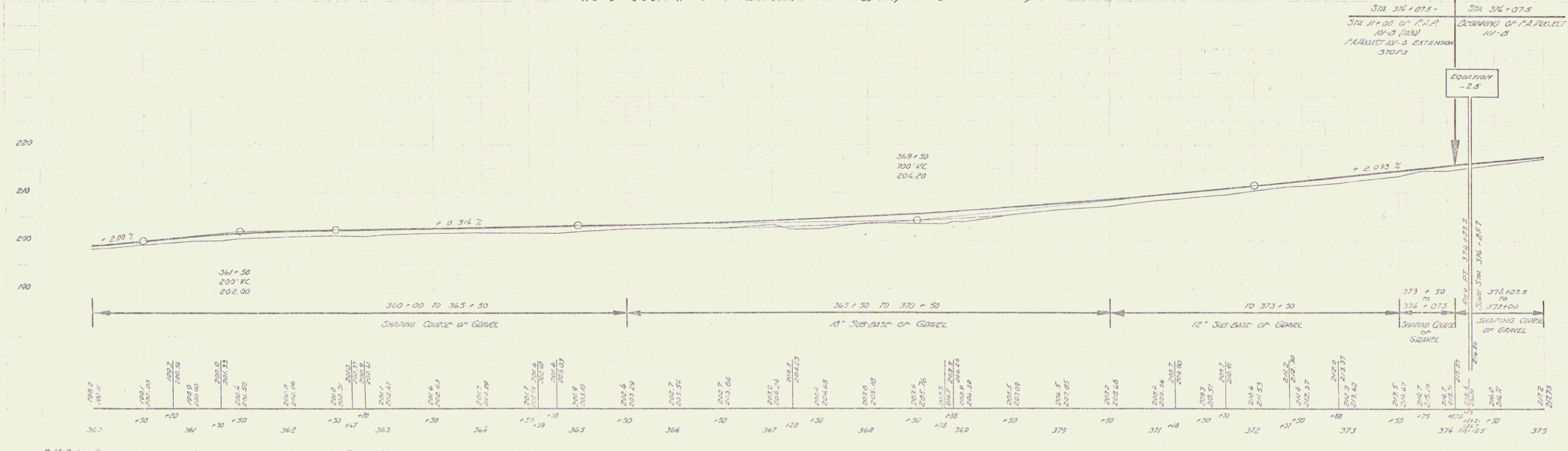
RECOMMENDED
RECOMMENDED FOR APPROVAL
APPROVED

SERIES FAP 101-B FILED
SHEET 1 OF 29

DIST. # 4 PLANS

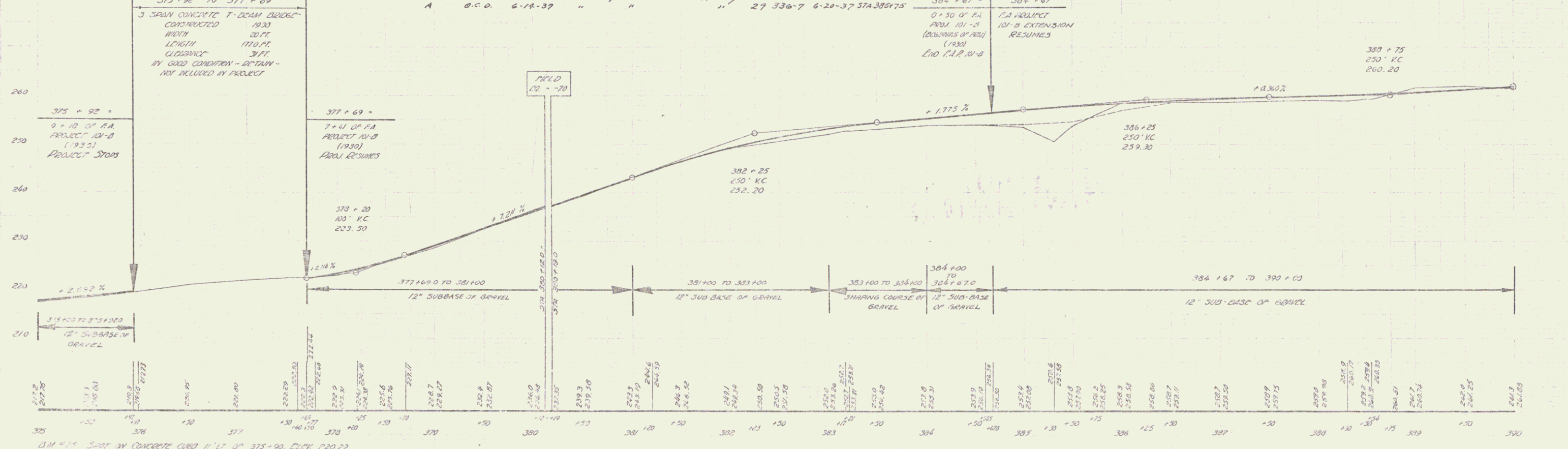
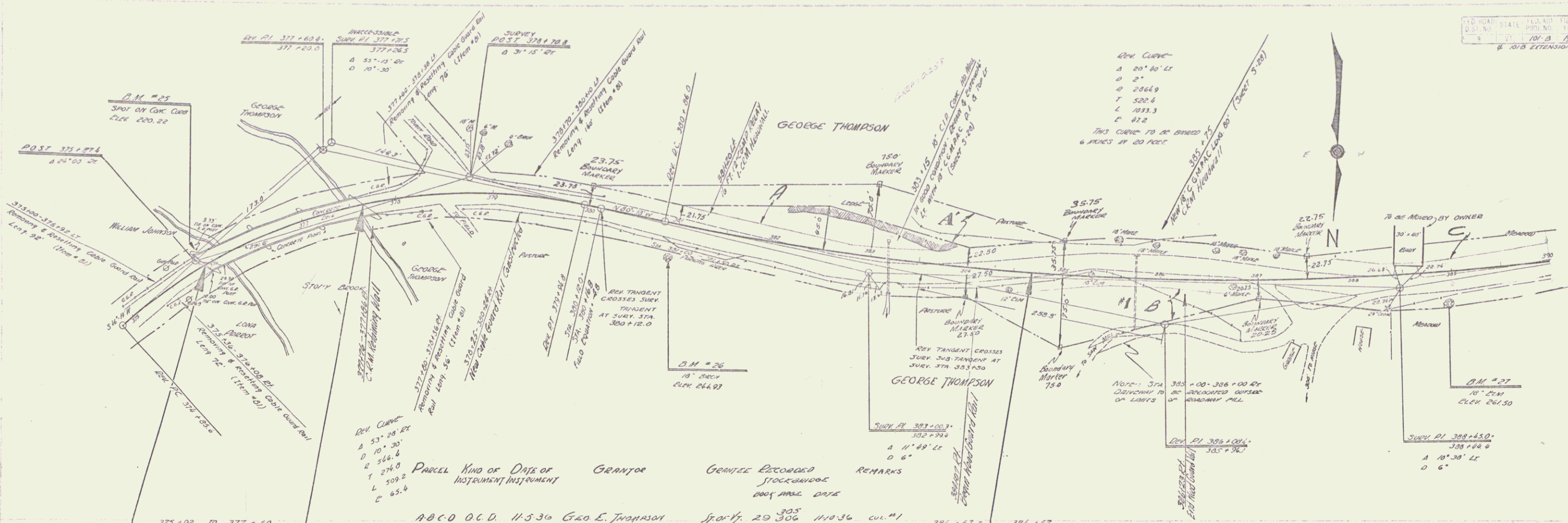


| Parcel | Kind of Drive or Instrument | Grantor | Grantee | Recorded | Remarks |
|--------|-----------------------------|-----------|---------|--------------------|---------|
| 1800 | O.C.D. 115-36 | Leo White | | Book 1982 Page 204 | |

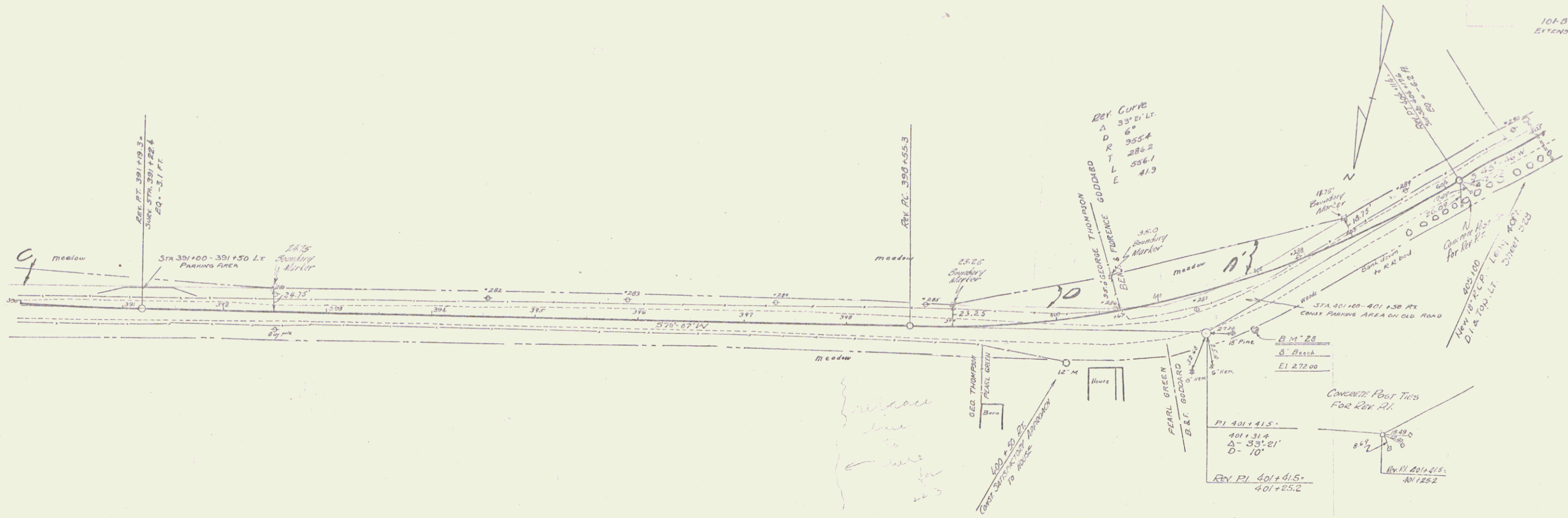


D.M. # 24 Same in roof of 12' APRIL 45 FT. HT. OF STA 360+90 ELEV 204.75.

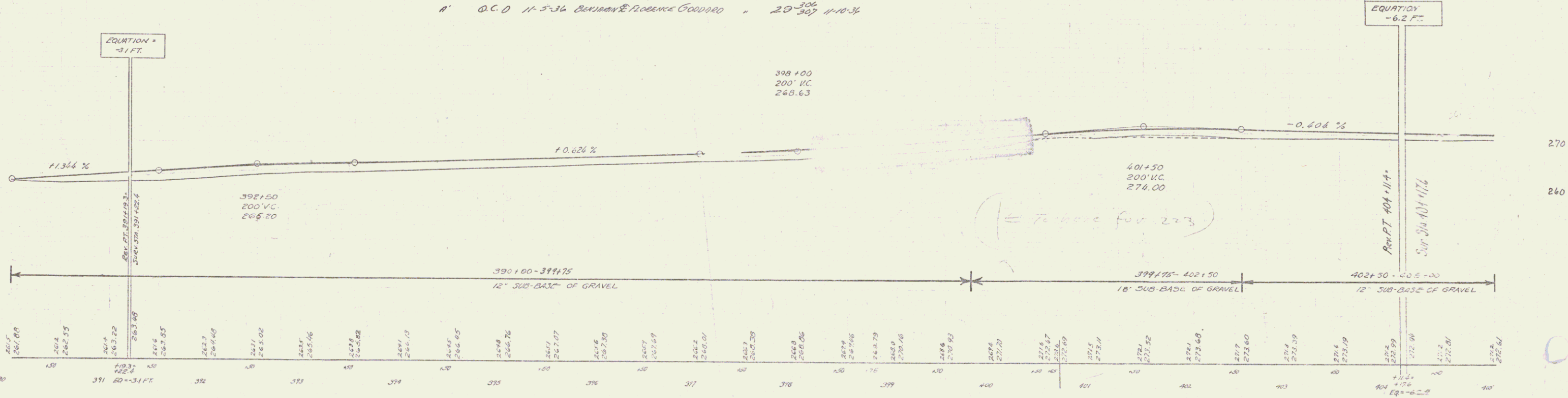
NO. 3 4
 SPORES 249 No. 10 B Extension
 Sheet 5 of 24 Sheets



B.M. #25 Spot on concrete curb 11' 11" of 375+90. Elev. 220.22
 B.M. #26 Spot in root of a' curb 36" of 380+95. Elev. 244.93
 B.M. #27 Spot in root of a' curb 29" of 388+95. Elev. 241.50



Parcel KIND OF DATE of CENTER CIVIL RECORDED
 INSTRUMENT/INSTRUMENT SPECIFICATIONS
 BOOK PAGE DATE
 A B C D Q.C.D. 11-5-34 GEORGE E. THOMPSON ST. OF 1/2 20 305 11-10-34
 A' Q.C.D. 11-5-34 BENJAMIN E. ROBERTS GOODARD " 20 307 11-10-34

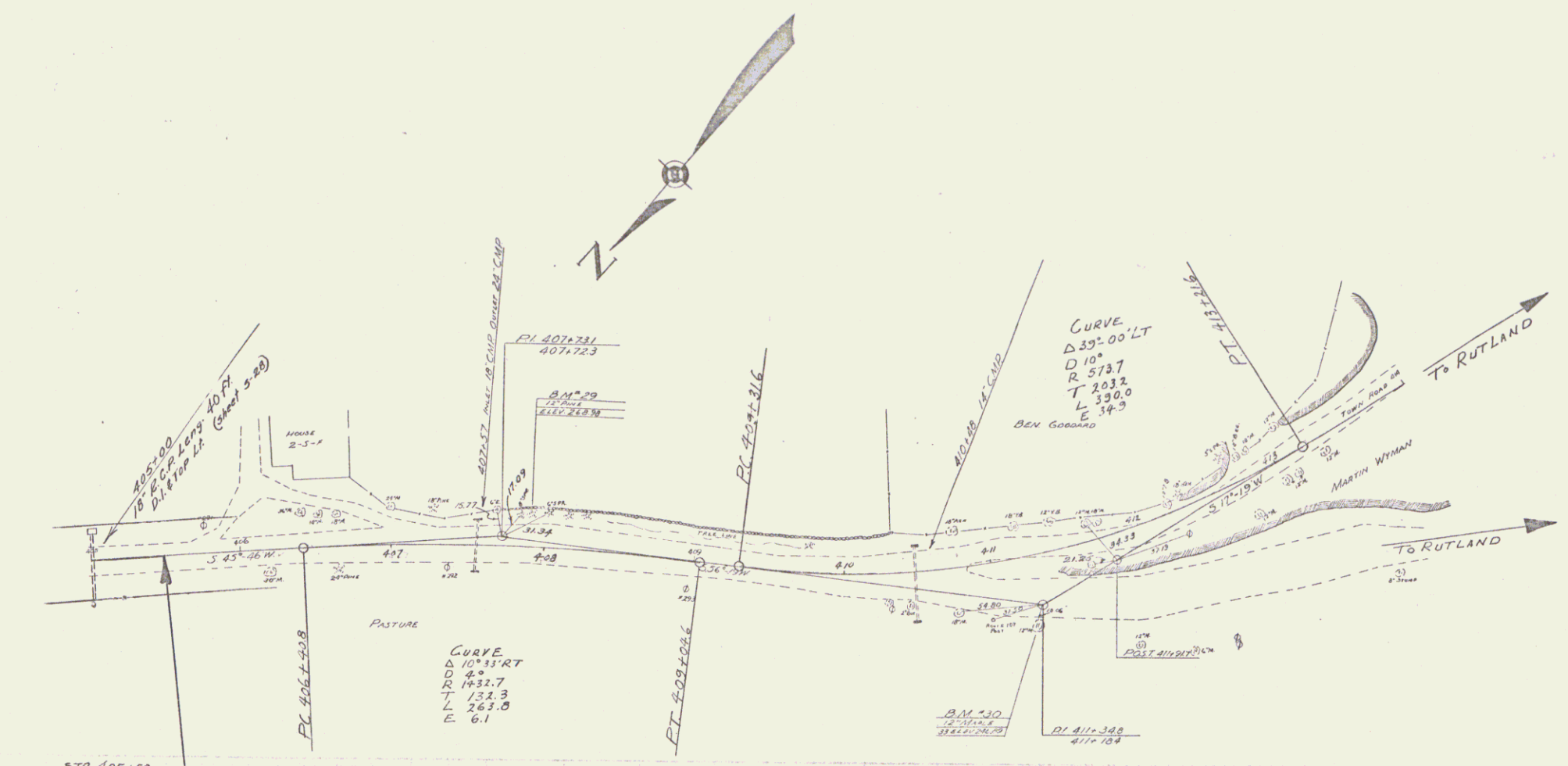


BM *26 SPIKE IN ROOT 6" BEECH RT 31 STA 401+80 EL 272.00

SERIES E.P. 101-A EXTENSION
 SHEET 2 OF 29

POOR ORIGINAL COPY

101-B 1037 B 24
EXTENSION



| Station | Elevation |
|---------|-----------|
| 405 | 271.2 |
| 404 | 271.54 |
| 403 | 271.1 |
| 402 | 271.41 |
| 401 | 271.1 |
| 400 | 271.29 |
| 399 | 271.29 |
| 398 | 271.29 |
| 397 | 271.29 |
| 396 | 271.29 |
| 395 | 271.29 |
| 394 | 271.29 |
| 393 | 271.29 |
| 392 | 271.29 |
| 391 | 271.29 |
| 390 | 271.29 |
| 389 | 271.29 |
| 388 | 271.29 |
| 387 | 271.29 |
| 386 | 271.29 |
| 385 | 271.29 |
| 384 | 271.29 |
| 383 | 271.29 |
| 382 | 271.29 |
| 381 | 271.29 |
| 380 | 271.29 |
| 379 | 271.29 |
| 378 | 271.29 |
| 377 | 271.29 |
| 376 | 271.29 |
| 375 | 271.29 |
| 374 | 271.29 |
| 373 | 271.29 |
| 372 | 271.29 |
| 371 | 271.29 |
| 370 | 271.29 |
| 369 | 271.29 |
| 368 | 271.29 |
| 367 | 271.29 |
| 366 | 271.29 |
| 365 | 271.29 |
| 364 | 271.29 |
| 363 | 271.29 |
| 362 | 271.29 |
| 361 | 271.29 |
| 360 | 271.29 |
| 359 | 271.29 |
| 358 | 271.29 |
| 357 | 271.29 |
| 356 | 271.29 |
| 355 | 271.29 |
| 354 | 271.29 |
| 353 | 271.29 |
| 352 | 271.29 |
| 351 | 271.29 |
| 350 | 271.29 |
| 349 | 271.29 |
| 348 | 271.29 |
| 347 | 271.29 |
| 346 | 271.29 |
| 345 | 271.29 |
| 344 | 271.29 |
| 343 | 271.29 |
| 342 | 271.29 |
| 341 | 271.29 |
| 340 | 271.29 |
| 339 | 271.29 |
| 338 | 271.29 |
| 337 | 271.29 |
| 336 | 271.29 |
| 335 | 271.29 |
| 334 | 271.29 |
| 333 | 271.29 |
| 332 | 271.29 |
| 331 | 271.29 |
| 330 | 271.29 |
| 329 | 271.29 |
| 328 | 271.29 |
| 327 | 271.29 |
| 326 | 271.29 |
| 325 | 271.29 |
| 324 | 271.29 |
| 323 | 271.29 |
| 322 | 271.29 |
| 321 | 271.29 |
| 320 | 271.29 |
| 319 | 271.29 |
| 318 | 271.29 |
| 317 | 271.29 |
| 316 | 271.29 |
| 315 | 271.29 |
| 314 | 271.29 |
| 313 | 271.29 |
| 312 | 271.29 |
| 311 | 271.29 |
| 310 | 271.29 |
| 309 | 271.29 |
| 308 | 271.29 |
| 307 | 271.29 |
| 306 | 271.29 |
| 305 | 271.29 |
| 304 | 271.29 |
| 303 | 271.29 |
| 302 | 271.29 |
| 301 | 271.29 |
| 300 | 271.29 |
| 299 | 271.29 |
| 298 | 271.29 |
| 297 | 271.29 |
| 296 | 271.29 |
| 295 | 271.29 |
| 294 | 271.29 |
| 293 | 271.29 |
| 292 | 271.29 |
| 291 | 271.29 |
| 290 | 271.29 |
| 289 | 271.29 |
| 288 | 271.29 |
| 287 | 271.29 |
| 286 | 271.29 |
| 285 | 271.29 |
| 284 | 271.29 |
| 283 | 271.29 |
| 282 | 271.29 |
| 281 | 271.29 |
| 280 | 271.29 |
| 279 | 271.29 |
| 278 | 271.29 |
| 277 | 271.29 |
| 276 | 271.29 |
| 275 | 271.29 |
| 274 | 271.29 |
| 273 | 271.29 |
| 272 | 271.29 |
| 271 | 271.29 |
| 270 | 271.29 |
| 269 | 271.29 |
| 268 | 271.29 |
| 267 | 271.29 |
| 266 | 271.29 |
| 265 | 271.29 |
| 264 | 271.29 |
| 263 | 271.29 |
| 262 | 271.29 |
| 261 | 271.29 |
| 260 | 271.29 |

SERIES 101-B NO. 101-B EXTENSION SHEET 8 OF 24

6