

SERIES No. 78 B SHEET 6 OF 11

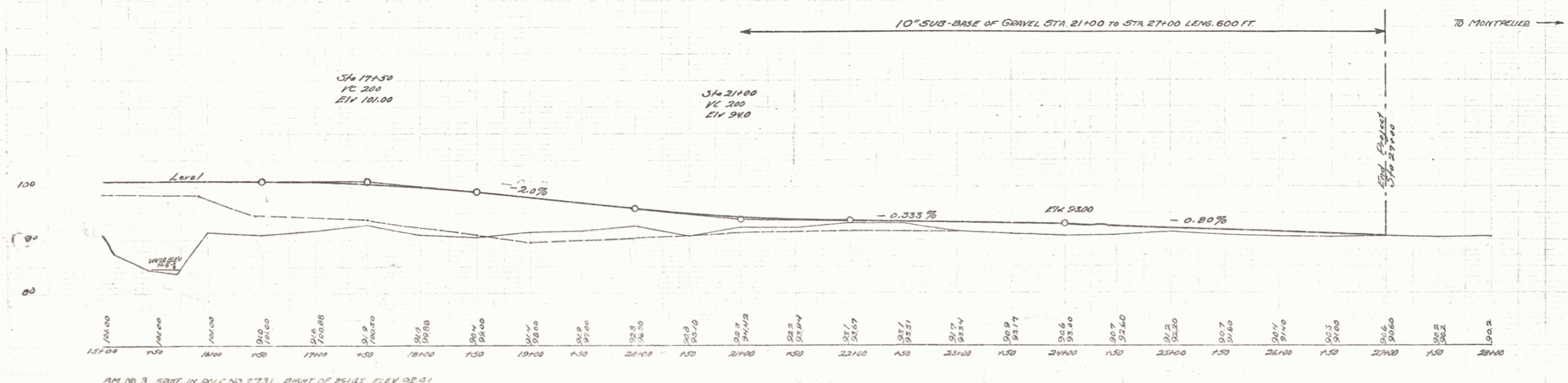
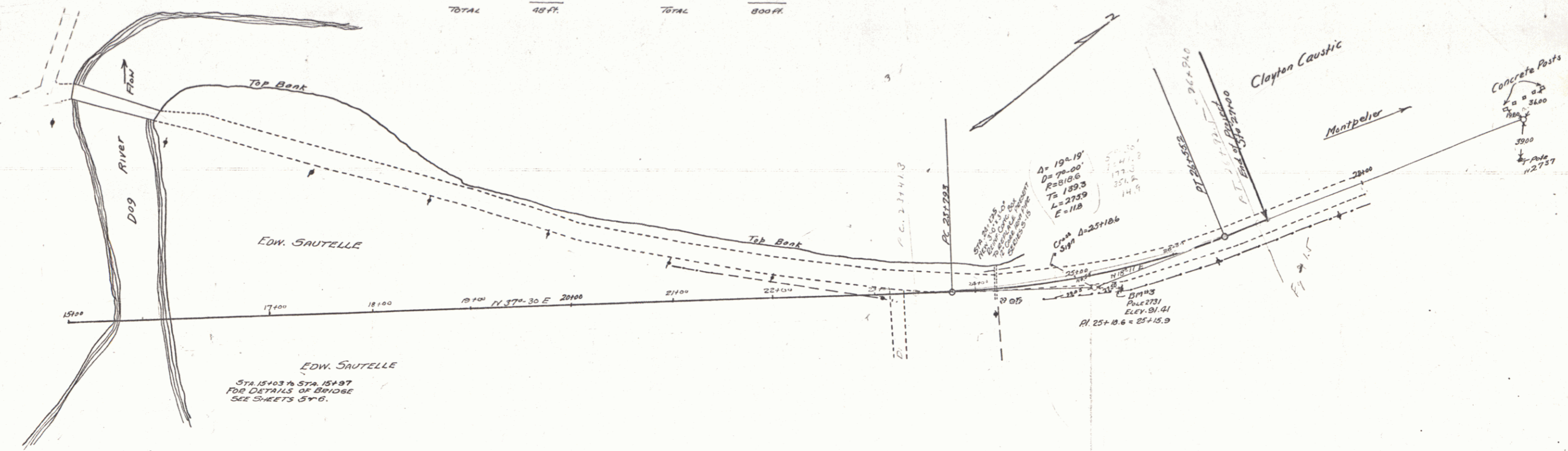
WOOD GUARD RAIL REQUIRED
 LEFT
 STA 21+06 TO 21+30 LENGTH 24 FT.
 RIGHT
 STA 21+06 TO 21+30 LENGTH 24 FT.
 TOTAL 48 FT.

CABLE GUARD RAIL REQUIRED
 LEFT
 STA 15+97 TO 19+97 LENG. 400 FT.
 RIGHT
 STA 15+97 TO 19+97 LENG. 400 FT.
 TOTAL 800 FT.

10" SUB-BASE OF GRAVEL REQUIRED
 STA 21+00 TO 27+00 LENG. 600 FT.

NEW CULVERTS REQUIRED
 STA 25+75 3'x3' FRONT CORR. BOX CULVERT
 CONC. CLASS A (11-E-4) 127 CU.YD.
 REINFORCING STEEL 1290 POUNDS.

SCALE 1" = 40' HORIZ. 1" = 10' VERT.
 SHEET NO. 11



SERIES E NO. 70 B
 SHEET 11

3