

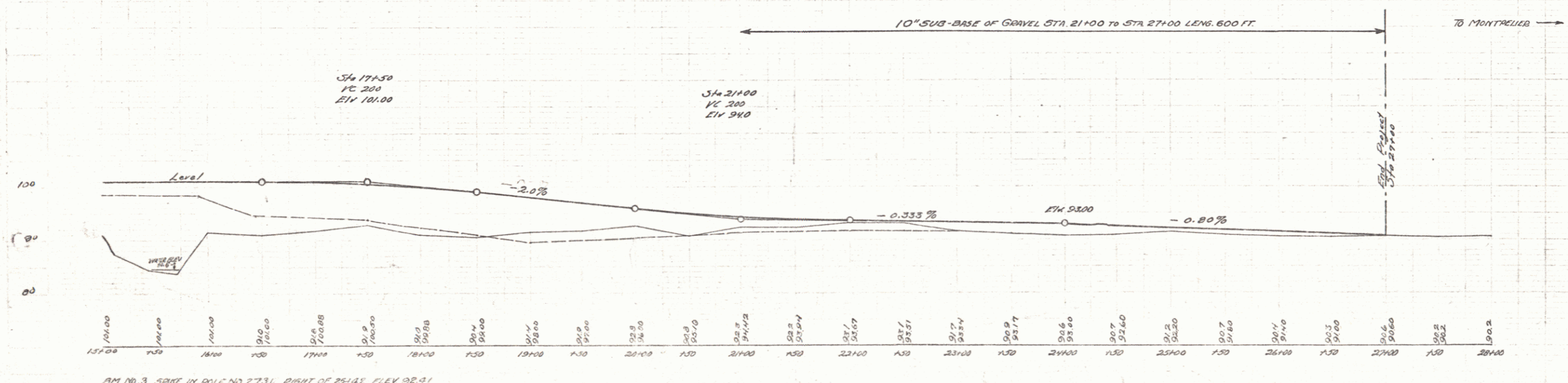
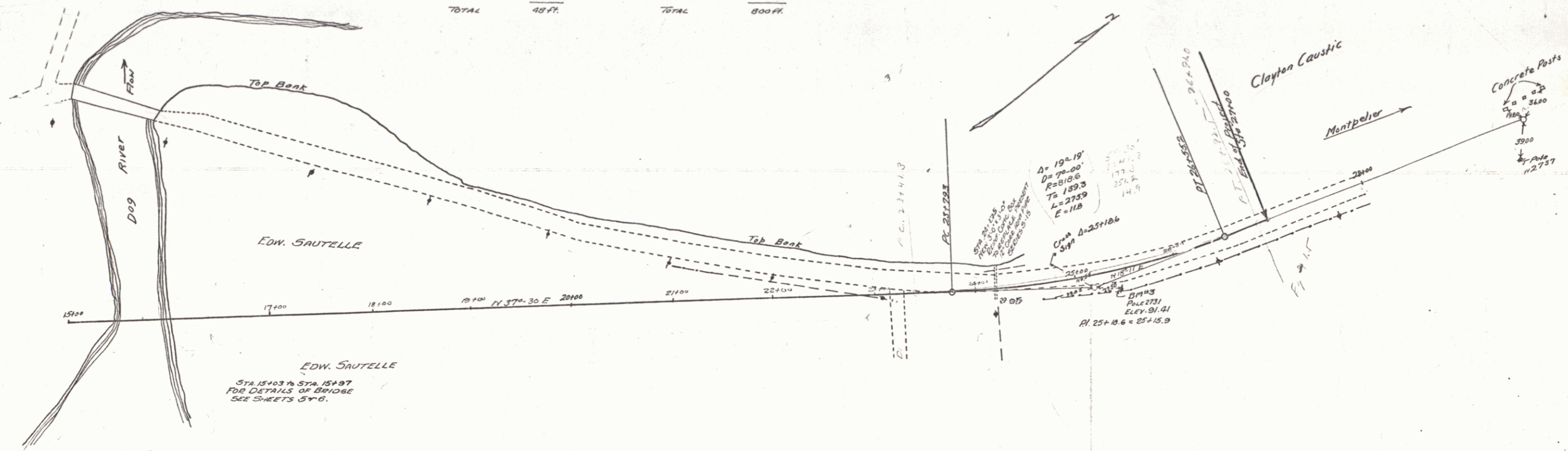
WOOD GUARD RAIL REQUIRED
 LEFT
 STA 21+06 TO 21+30 LENGTH 24 FT.
 RIGHT
 STA 21+06 TO 21+30 LENGTH 24 FT.
 TOTAL 48 FT.

CABLE GUARD RAIL REQUIRED
 LEFT
 STA 15+97 TO 19+97 LENG. 400 FT.
 RIGHT
 STA 15+97 TO 19+97 LENG. 400 FT.
 TOTAL 800 FT.

10" SUB-BASE OF GRAVEL REQUIRED
 STA 21+00 TO 27+00 LENG. 600 FT.

NEW CULVERTS REQUIRED
 STA 25+75 3 x 3' FRONT CORR. BOX CULVERT
 CONC. CLASS A (11-E-4) 127 CU.YD.
 REINFORCING STEEL 1290 POUNDS.

SCALE 1" = 40' HORIZ. 1" = 10' VERT.
 1928 1028 2 11



B.M. NO. 3 SPIRE IN POLE NO. 2731. RIGHT OF 25+42. ELEV. 92.91

SERIES E. NO. 78 B
 SHEET 11

3