

STATE OF VERMONT
AGENCY OF TRANSPORTATION



PROPOSED IMPROVEMENT
TOWN OF NEWBURY
COUNTY OF ORANGE
CROSS VERMONT TRAIL

STP EH 00(1)

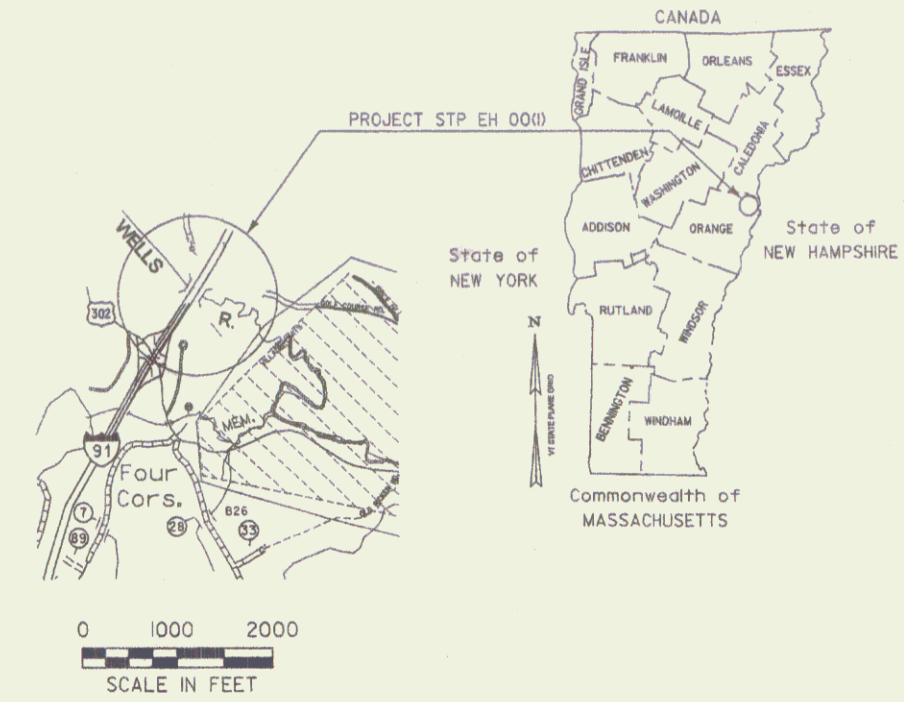
LOCATION: CROSS VERMONT TRAIL UNDER I-91
WORK DESCRIPTION: THE EXTENSION OF CROSS VERMONT TRAIL UNDER I-91
LENGTH OF PROJECT: 1285 FT = 0.243 MILES

INDEX OF SHEETS

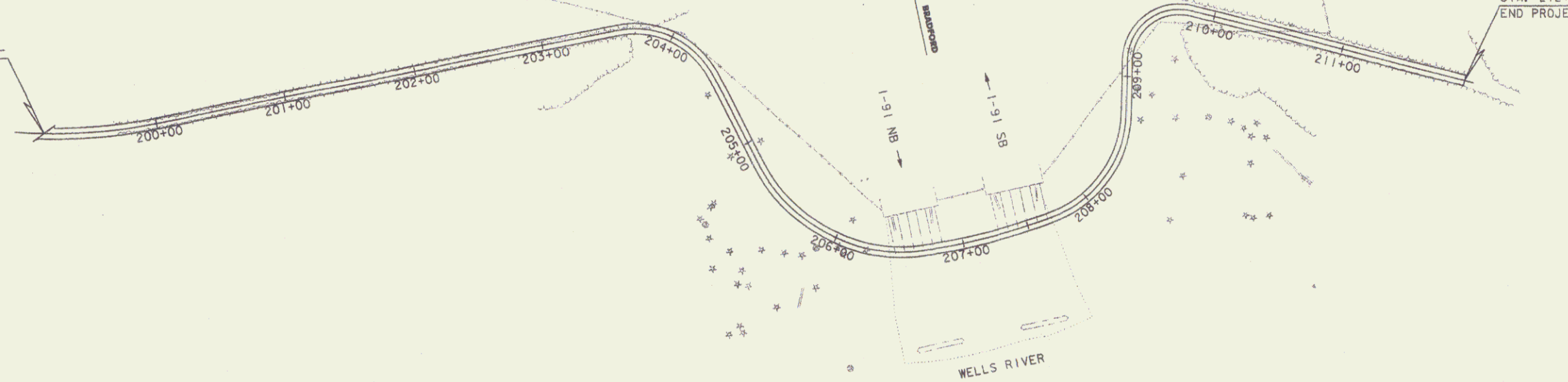
- 1 TITLE SHEET
- 2-3 TYPICAL SHEETS
- 4 DETAIL SHEET
- 5 QUANTITY SHEET
- 6-7 PLAN SHEETS
- 8 PROFILE SHEET
- 9-15 CROSS SECTIONS

INDEX OF STANDARD SHEETS

- | | |
|---------------------------------------|-------------------|
| B-5 EMBANKMENT ON EARTH SLOPE | APPROVED 6/1/94 |
| D-3 TREATED GUTTERS | APPROVED 6/1/94 |
| E-160 FLANGED CHANNEL STEEL SIGN POST | APPROVED 5/20/99 |
| F-2 CHAIN LINK FENCE, TYPE 1 | APPROVED 6/13/97 |
| J-5 BRACING FOR TREES | APPROVED 12/19/72 |
| T-1 TEMPORARY EROSION CONTROL DETAILS | APPROVED 6/1/94 |
| T-2 TEMPORARY EROSION CONTROL DETAILS | APPROVED 6/1/94 |

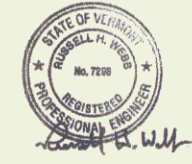


STA. 199+15 +/-
BEGIN PROJECT



STA. 212+00
END PROJECT

Pin # 00F126
Route I91
Date 3/21/2002

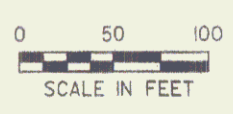


CONVENTIONAL SIGNS

COUNTY LINE	---
TOWN LINE	- - - -
LIMITS OF ACCESS	—○—○—○—
POINT OF ACCESS	X
FENCE LINE	-x-x-x-
STONE WALL	o-o-o-o-o-o-o-o
TRAVELED WAY	— — — —
GUARD RAIL	—o—o—o—o—
RAILROAD	—+—+—+—+—
SURVEY LINE	—+—+—+—+—
CULVERT	—+—+—+—+—
POWER POLE	□
TELEPHONE POLE	○
TREES	⊗ ⊛
CONTROL OF ACCESS	///
PROPERTY LINE	— — — —
R.O.W. TAKING LINE	— SR —
SLOPE RIGHTS	—△—△—
TOP OF CUT	—△—△—
TOE OF SLOPE	—○—○—

DATUM

VERTICAL	NAVD 88
HORIZONTAL	NAD 83



VHB Vanasse Hangen Brustlin, Inc.

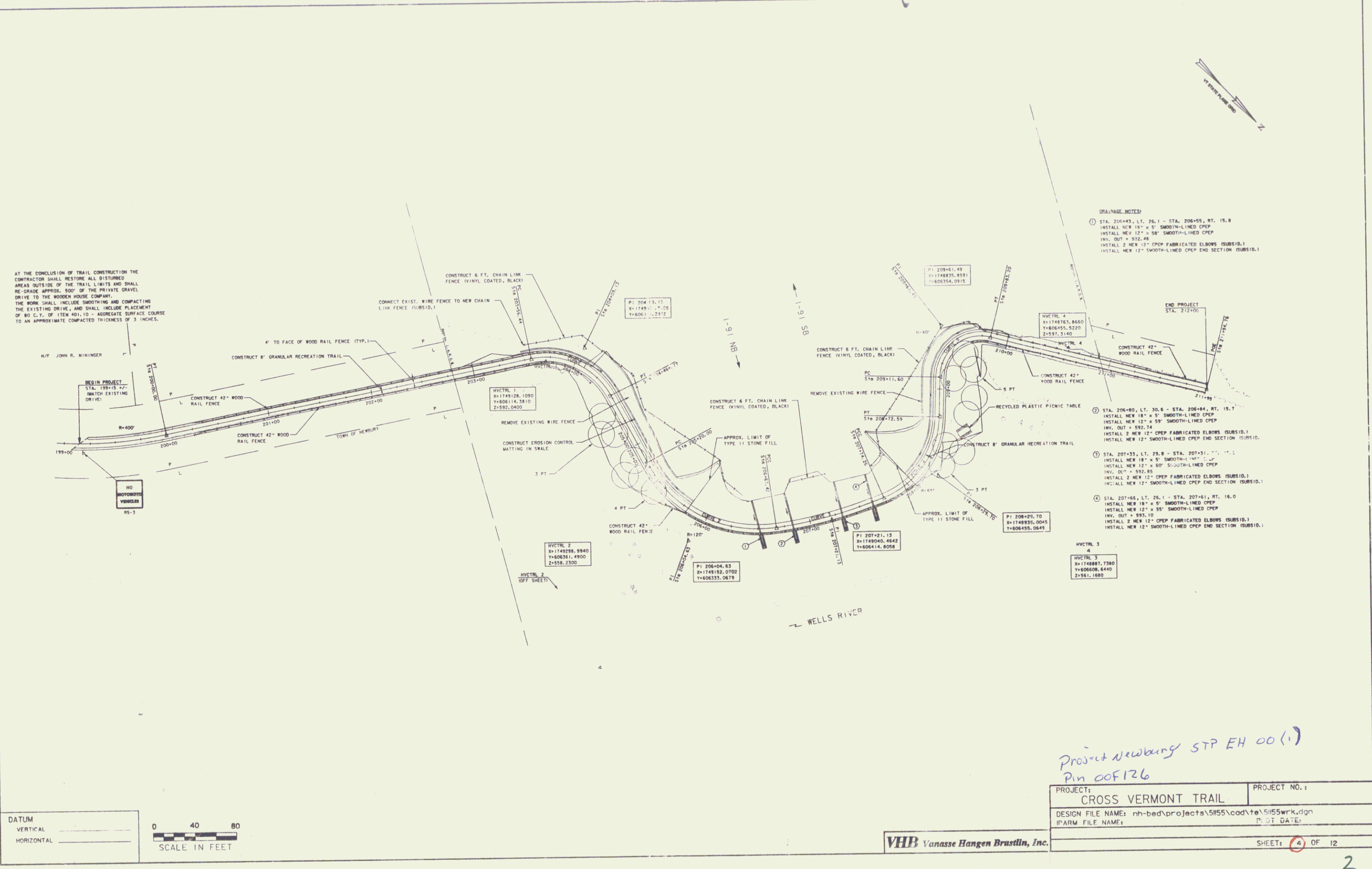
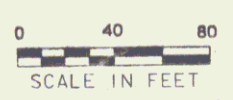
CONTRACT PLANS
JUNE, 2002
MP 110.585-110.649

APPROVED	DATE
CROSS VERMONT TRAIL ASSOC., INC.	
DEPARTMENT OF TRANSPORTATION FEDERAL HIGHWAY ADMINISTRATION	
APPROVED	DATE
DIVISION ADMINISTRATOR	
MANAGER:	
PROJECT	NEWBURY STP EH 00(1)
SHEET 1 OF 15 SHEETS	

AT THE CONCLUSION OF TRAIL CONSTRUCTION THE CONTRACTOR SHALL RESTORE ALL DISTURBED AREAS OUTSIDE OF THE TRAIL LIMITS AND SHALL RE-GRADE APPROX. 300' OF THE PRIVATE GRAVEL DRIVE TO THE WOODEN HOUSE COMPANY. THE WORK SHALL INCLUDE SMOOTHING AND COMPACTING THE EXISTING DRIVE, AND SHALL INCLUDE PLACEMENT OF 80 C.Y. OF ITEM 401.10 - AGGREGATE SURFACE COURSE TO AN APPROXIMATE COMPACTED THICKNESS OF 3 INCHES.

N/F JOHN R. HININGER
 BEGIN PROJECT STA. 199+00 7'-7" MATCH EXISTING DRIVE
 HO MOTORISTS VEHICLES BS-3

DATUM
 VERTICAL _____
 HORIZONTAL _____



- DRAINAGE NOTES:**
- ① STA. 206+43, LT. 26.1 - STA. 206+59, RT. 15.8
 INSTALL NEW 18" x 5' SMOOTH-LINED CPEP
 INSTALL NEW 12" x 58" SMOOTH-LINED CPEP
 INV. OUT = 592.48
 INSTALL 2 NEW 12" CPEP FABRICATED ELBOWS (SUBSID.)
 INSTALL NEW 12" SMOOTH-LINED CPEP END SECTION (SUBSID.)
 - ② STA. 206+80, LT. 30.8 - STA. 206+84, RT. 18.7
 INSTALL NEW 18" x 5' SMOOTH-LINED CPEP
 INSTALL NEW 12" x 58" SMOOTH-LINED CPEP
 INV. OUT = 592.74
 INSTALL 2 NEW 12" CPEP FABRICATED ELBOWS (SUBSID.)
 INSTALL NEW 12" SMOOTH-LINED CPEP END SECTION (SUBSID.)
 - ③ STA. 207+33, LT. 28.8 - STA. 207+31, RT. 17.1
 INSTALL NEW 12" x 50" SMOOTH-LINED CPEP
 INV. OUT = 592.85
 INSTALL 2 NEW 12" CPEP FABRICATED ELBOWS (SUBSID.)
 INSTALL NEW 12" SMOOTH-LINED CPEP END SECTION (SUBSID.)
 - ④ STA. 207+66, LT. 26.1 - STA. 207+61, RT. 16.0
 INSTALL NEW 18" x 5' SMOOTH-LINED CPEP
 INV. OUT = 595.10
 INSTALL 2 NEW 12" CPEP FABRICATED ELBOWS (SUBSID.)
 INSTALL NEW 12" SMOOTH-LINED CPEP END SECTION (SUBSID.)

*Project Newbury STP EH 00(1)
 Pin 00F126*

PROJECT: CROSS VERMONT TRAIL	PROJECT NO.:
DESIGN FILE NAME: nh-bed\projects\5155\cod\te\5155wrk.dgn	P. I. DATE:
IPARM FILE NAME:	
SHEET: 4 OF 12	

VHB Vanasse Hangen Brustlin, Inc.

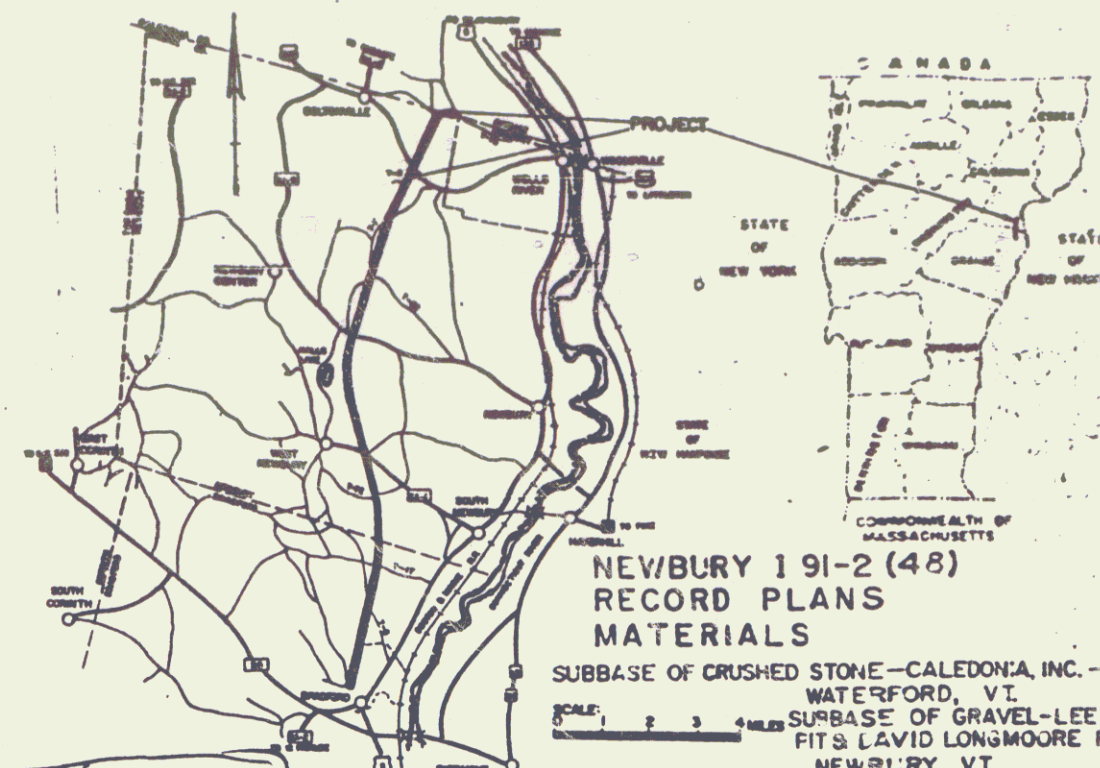
STATE OF VERMONT
DEPARTMENT OF HIGHWAYS
PROPOSED IMPROVEMENT

TOWN OF NEWBURY
COUNTY OF ORANGE
INTERSTATE ROUTE 91

BEGINNING AT A POINT APPROXIMATELY 0.706 MILES
SOUTHERLY OF THE NEWBURY-RYEGATE TOWN LINE,
AND EXTENDING NORTHERLY 0.706 MILES.
LENGTH OF ROADWAY 3393.72 FEET = 0.643 MILES
LENGTH OF BRIDGE 333.92 FEET = 0.063 MILES
LENGTH OF PROJECT 3727.64 FEET = 0.706 MILES

TRAFFIC DATA

INFO	ADT	1968
INFO	ADT	4250
INFO	ADT	600
INFO	ADT	97%
INFO	ADT	5%
INFO	ADT	60 MPH



NEWBURY 191-2 (48)
RECORD PLANS
MATERIALS
SUBBASE OF CRUSHED STONE—CALEDONIA, INC.—
WATERFORD, VT.
SUBBASE OF GRAVEL—LEE
FIT & DAVID LONGMOORE
NEWBURY, VT.
CONCRETE CLASS A & B—MILLER READY MIX
CRETE—BRADFORD, VT.

AIR ENTRAINING & RETARDING ADMIXTURES & JOINT SEALER—CONST
ION PRODUCTS DIV. W.R. GRACE & CO.—CAMBRIDGE, MA.
EPOXY COATING COMPOUND—DURAL INTERNATIONAL CORP.—DEER PAR
PLANT MIXED BASE COURSE & BITUMINOUS CONCRETE PAVEMENT—L.M.
(PLANTS)—CONCORD & WATERFORD, VT.
REINFORCING STEEL—BETHLEHEM STEEL CORP.—BOSTON, MA.
STRUCTURAL STEEL—VERMONT STRUCTURAL STEEL CORP.—BURLINGTON
SHEAR CONNECTORS—K.S.M. DIV. OMAR INDUSTRIES INC.—MOORESTOWN,
BRIDGE PAINT—AMSTERDAM COLOR WORKS—NEW YORK, N.Y.
PAINT WATERPROOFING—KIBRY EQUIPMENT CO., INC.—WHITE RIVER JCT.
STEEL PILING—BRITISH STEEL CORP.—
METAL CULVERT PIPE—NORTHEASTERN CULVERT CORP.—
MINSTER, VT.
BRIDGE RAILING—WARD WELLS CO., INC.—NATICK, MA.
REINFORCED CONCRETE PIPE & PRECAST REINFORCED CONCRETE CURB
INLET—S.T. GRISWOLD & CO., INC.—WILLISTON, VT.
FENCE, APPROACH RAILING, SIGNS, POSTS, GUARD RAIL & EROSION CONT
ITEMS—GRISWOLD FENCE CO., INC.—ESSEX JCT., VT.

CONTRACTOR
CALEDONIA, INC.
ST. JOHNSBURY, VT.
RESIDENT ENGINEERS—NELSON F.
DUBA, JR. & DAVID G. PALMER,
INSPECTORS—L.C. GRAHAM, F. COBS
& D. LYONS.
RECORD PLANS—A. G. SPIDLE.

CONTRACT
DATED—AUGUST 10, 1972.
STARTED—AUGUST 21, 1972
COMPLETED—DECEMBER 19,
ACCEPTED—DECEMBER 19,

NOTE: ANY FURTHER INFORMATION CONCERNING
FIELD CONDITIONS, QUANTITIES OR OTHER DETAILS
RELATIVE TO THIS PROJECT MAY BE FOUND IN
EITHER THE FIELD BOOKS OR THE ESTIMATE
FILE.

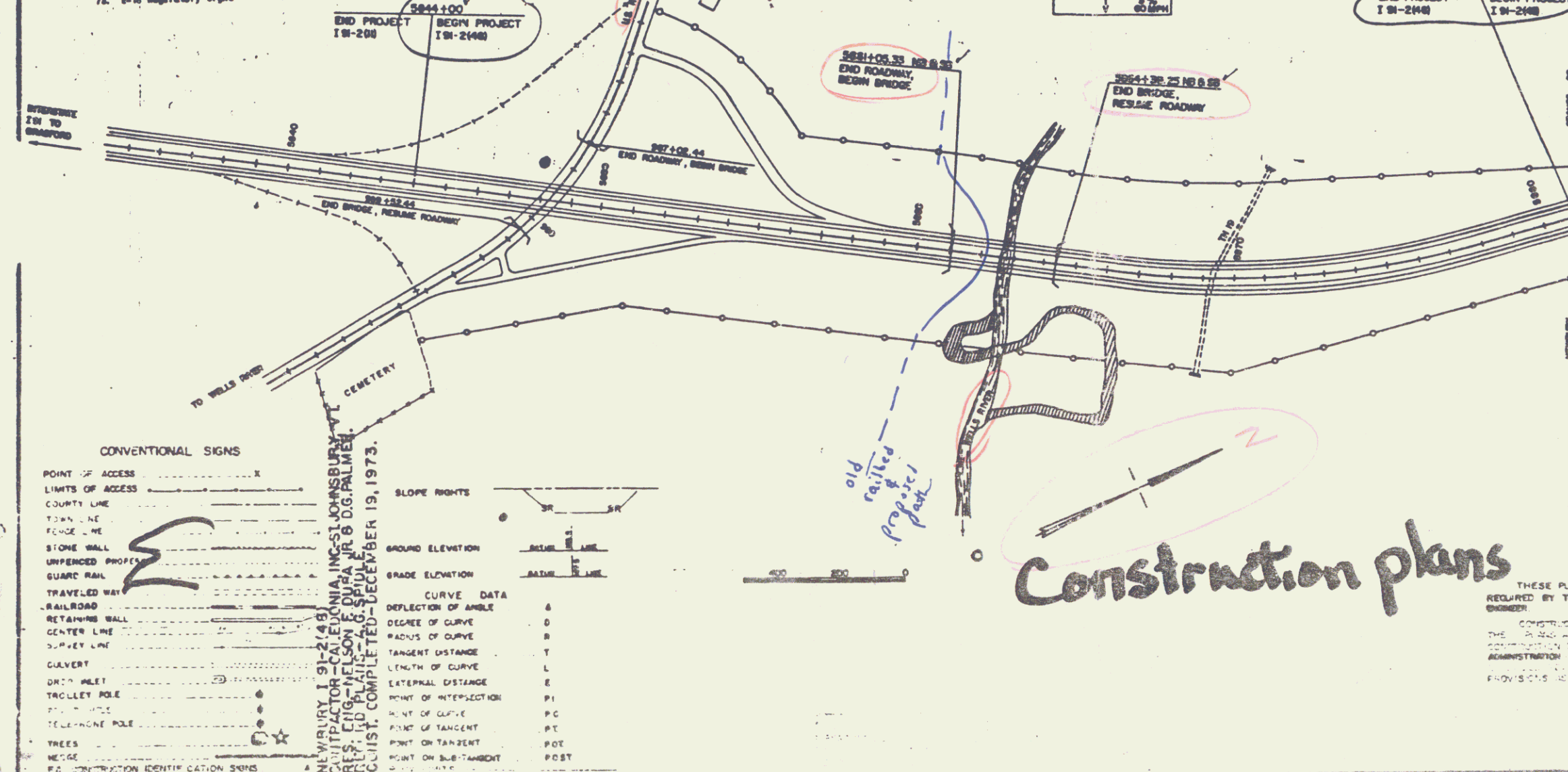
THESE PLANS ARE SUBJECT TO SUCH REVISIONS AS MAY BE
REQUIRED BY THE FEDERAL HIGHWAY ADMINISTRATION OR THE CHIEF
ENGINEER.
CONSTRUCTION IS TO BE CARRIED OUT IN ACCORDANCE WITH
THE FEDERAL SPECIFICATIONS FOR HIGHWAY AND BRIDGE
CONSTRUCTION, DATE JANUARY 3, 1972, SUPPLEMENTED BY THE FEDERAL HIGHWAY
ADMINISTRATION'S DECEMBER 24, 1971, SUPPLEMENTAL SPECIFICATIONS AND SPECIAL
PROVISIONS WHICH ARE INCORPORATED IN THESE PLANS.

APPROVED: *R.H. Arnold* PROJECT: M. 91-2(48)
DATE: 5/26/72 SHEET: 01 OF 010

INDEX OF SHEETS

1. Title Sheet	1/1/72
2. Alignment Details	1/21/72
3. Typical Sections	12/29/71
4. Quantity Sheets	12/29/71
5. Blank	12/2/71
6. Plan Detail and Drainage Sheet	12/2/71
7. Earthwork Sheets	12/2/71
8. S & W Details (SD, SI, S2, S3C, S3D, S3E)	12/2/71
9. Blank	12/2/71
10. Plan and Profile Sheets	12/2/71
11. Top Detail	12/2/71
12. Illumination & Lighting Details and Sign Locations	12/2/71
13. Blank	12/2/71
14. A-25 Solid Duct Excavation	12/2/71
15. A-21 Solid Duct Excavation	12/2/71
16. B-1 Banking Yards	12/2/71
17. B-2 Typical Slope Grading	12/2/71
18. Blank	12/2/71
19. B-11 Underdrains w/ Shattered Rock Subgrade	12/2/71
20. Blank	12/2/71
21. B-13 Drive Intersection	12/14/71
22. B-16 Intersect and Exit Terminal	12/14/71
23. B-18 Divisional Islands	12/14/71
24. Blank	12/2/71
25. C-1 Curbs	12/2/71
26. Blank	12/2/71
27. B-2 Underdrains and Roadways	3/8/72
28. B-3 Treated Cutters	12/2/71
29. B-4 Cur. Pipe Elbows	12/2/71
30. B-5 Drop Inlets	12/2/71
31. B-6 Drop Inlets	12/2/71
32. B-7 Top for Drop Inlet	12/2/71
33. B-11 Details for Grates and Covers	4/25/72
34. B-13 Concrete Catch Basins	12/14/71
35. B-16 Precast Rein. Conc. Curb Drop Inlet	12/2/71
36. Blank	12/14/71
37. E-1 Red. Aid Const. Ident. Signs	12/14/71
38. E-2 Red. Project Construction Signs	12/14/71
39. E-3 Berricodes	12/14/71
40. E-4 Traffic Guide Signs	1/14/72
41. E-5 Regulatory Signs	1/14/72
42. E-6 Regulatory Signs	1/14/72
43. E-7 Regulatory Signs	1/14/72

74. E-20 Warning Signs	1/14/72
75. E-21 Warning Signs	1/21/72
76. E-22 Sign Placement	12/29/71
77. E-23 Conc. Bases & Full Bases	12/29/71
78. E-24 Poles, Bases, Brackets and Luminaires	12/2/71
79. E-25 Wires and Fences	12/2/71
80. F-1 Chain-Link Fence-Type I	12/2/71
81. F-2 Chain-Link Fence-Type II	12/2/71
82. F-3 Chain-Link Fence-Type III	12/2/71
83. G-1 Approach Railing (2 Rail Aluminum)	12/2/71
84. J-1 Boundary Markers	12/2/71
85. K-1 T-4 & T-2 Temporary Station Control	12/2/71
86. M-1-71 Alum. Railing Details - Sheet 1 of 2	9/29/71
87. M-2-71 Alum. Railing Details - Sheet 2 of 2	9/29/71
88. N-1-71 General Information	1/29/72
89. N-2-71 Details of Sheet Structures, Stone Masonry and Elevations	12/14/71
90. N-3-71 Plan and Detailing Layout of Abutment	12/14/71
91. N-4-71 Details of Support, Deck, Construction Joint and Pile Cap	12/14/71
92. N-5-71 Curbside Wall and Box Cuts	12/14/71
93. Blank	
94-112. RC 309 Bridge Series	
113-142. RC 309 Bridge Series	
143-172. Retaining Cross Sections	
173-182. RC 309 Cross Sections	
183-192. Ramp "A" Cross Sections	
193-198. Ramp "B" Cross Sections	
199-199. Access Road Cross Sections	

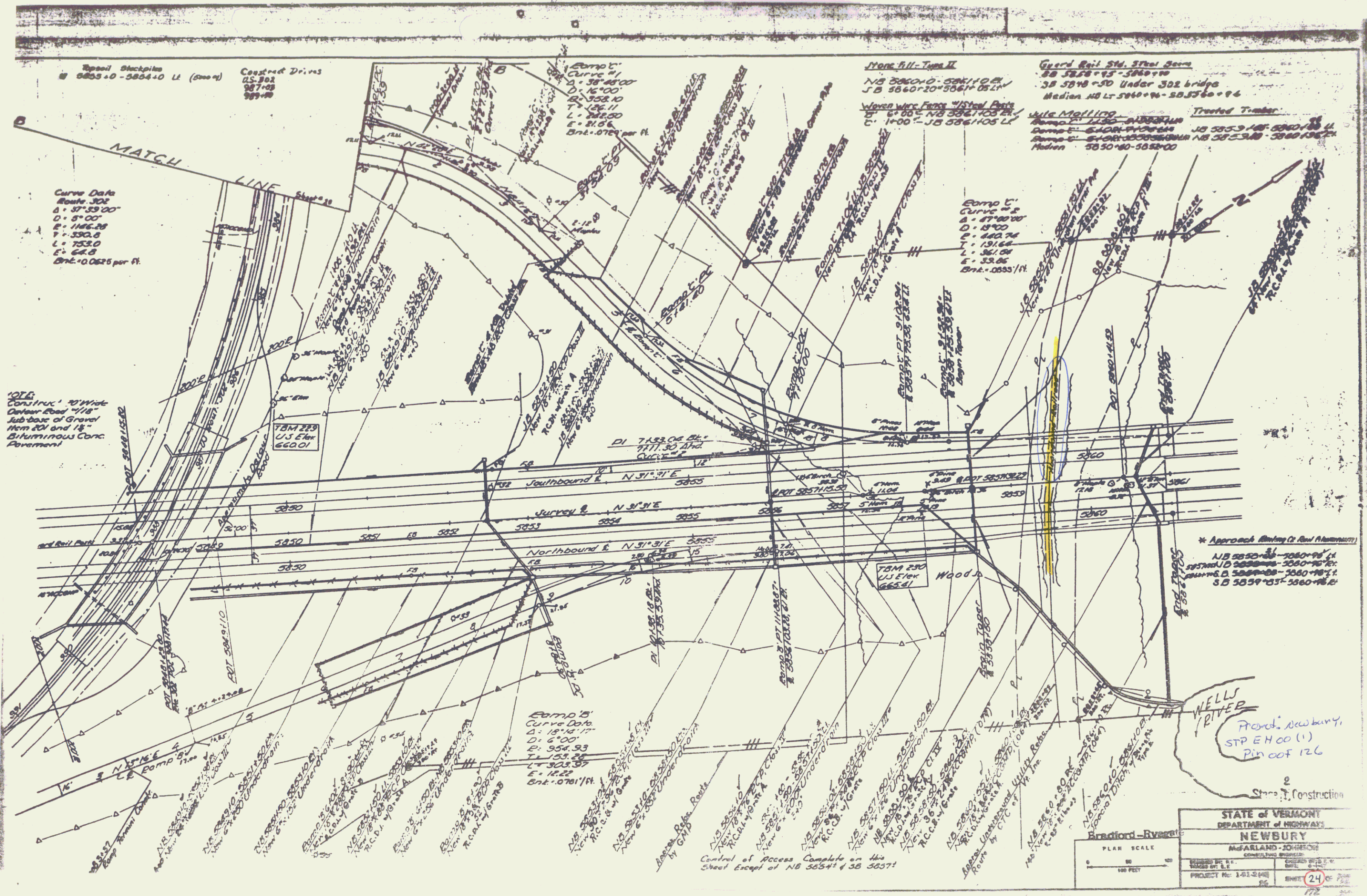


CONVENTIONAL SIGNS

POINT OF ACCESS	— X —
LIMITS OF ACCESS	— — — — —
COUNTY LINE	— — — — —
TOWN LINE	— — — — —
FENCE LINE	— — — — —
STONE WALL	— — — — —
UNFENCED PROPERTY	— — — — —
QUART MILE	— — — — —
TRAVELED WAY	— — — — —
RAILROAD	— — — — —
RETAINING WALL	— — — — —
CENTER LINE	— — — — —
SURVEY LINE	— — — — —
CULVERT	— — — — —
DRAINAGE	— — — — —
TROLLEY POLE	— — — — —
TELEPHONE POLE	— — — — —
TREES	— — — — —
WEDGE	— — — — —
PA. CONTRACTION IDENTIFICATION SIGNS	— — — — —

Construction plans

Project Newbury
STEPHEN G. LYONS
DEPARTMENT OF TRANSPORTATION
FEDERAL HIGHWAY ADMINISTRATION
APPROVED
PROJECT: M. 91-2(48)
DATE: 5/26/72
SHEET: 01 OF 010



Speed Bump
5853+0 - 5854+0 Lt. (500 ft)
Construct Drives
US 902
987+00
989+00

Curve Data
Route 302
Δ = 57°33'00"
D = 5°00'
E = 1146.28
T = 330.0
L = 753.0
E = 62.8
Bnt. = 0.0625 per ft.

100%
Construct 20' Wide
Outside Road 1/8"
Sub-base of Gravel
1/4" and 1/8"
Bituminous Conc.
Pavement

More Bill - Type II
NB 5850+0 - 5861+0 E.
JB 5860+30 - 5861+0 L.
Water Pipe
1" x 100' NB 5861+05 E.
1" x 100' - JB 5861+05 L.

Guard Rail Std. Steel Beam
SB 5858+95 - 5860+90
3B 5818+50 Under 302 bridge
Median NB Lt 5860+90 - 5853+0 + 94

Utility Mailing
NB 5853+148 - 5860+130 U.
SB 5853+148 - 5860+130 L.
Median 5850+80 - 5852+00

Treated Timber
NB 5853+148 - 5860+130 U.
SB 5853+148 - 5860+130 L.
Median 5850+80 - 5852+00

Curve #1
Δ = 87°00'00"
D = 15°00'
E = 440.74
T = 131.64
L = 361.08
E = 32.06
Bnt. = .0555 per ft.

* Approach Slab to Rail Alignment
NB 5852+00 - 5860+90 U.
SB 5852+00 - 5860+90 L.
Median 5854+00 - 5860+90 L.
SB 5854+00 - 5860+90 L.

Curve #2
Curve Data
Δ = 18°14'17"
D = 6°00'
E = 556.93
T = 153.28
L = 301.85
E = 14.22
Bnt. = .0761 per ft.

Control of Access Complete on this
Sheet except at NB 5854+43 5857

State of Construction

STATE OF VERMONT
DEPARTMENT OF HIGHWAYS
NEWBURY

McFARLAND JOHNSON
CONSULTING ENGINEERS

BRADFORD - RIVER

PLAN SCALE
1" = 100 FEET

PROJECT NO. 1-21-248
SHEET 24 OF 25
DATE 1/22/72

Stone Fill, Type II
 SB 2864+94 - 2869+0 LT.
 CL 17+25 - 24+70 El. 11.5
 NB 2869+50 - 2874+00 El. (Pole)
 8+50

Stone Fill, Type I
 SB 2864+95 - 2865+05 El.
 SB 2864+95 - 2867+05 El.
 Paved Type II at above Sta.

Vertical Curve Data
 NB 2864+30 - 2871+0 LI
 NB 2864+30 - 2871+0 LI

Remain Stockpiles
 NB 2865+0 - 2867+0 El. (1000 sq)

Stone Fill, Type I
 NB 2864+30 - 2871+0 LI
 NB 2864+30 - 2871+0 LI

YBM 286
 U.S. Elev.
 553.07

YBM 287
 U.S. Elev.
 553.07

Sta. 17+75 (Channel)
 Begin Construction
 Wells River Retec.

Auto Mallory
 JB 2865+10 - 2867+35 LI

Station	Dist.	Remarks
Sta. 17+30	21	Corner

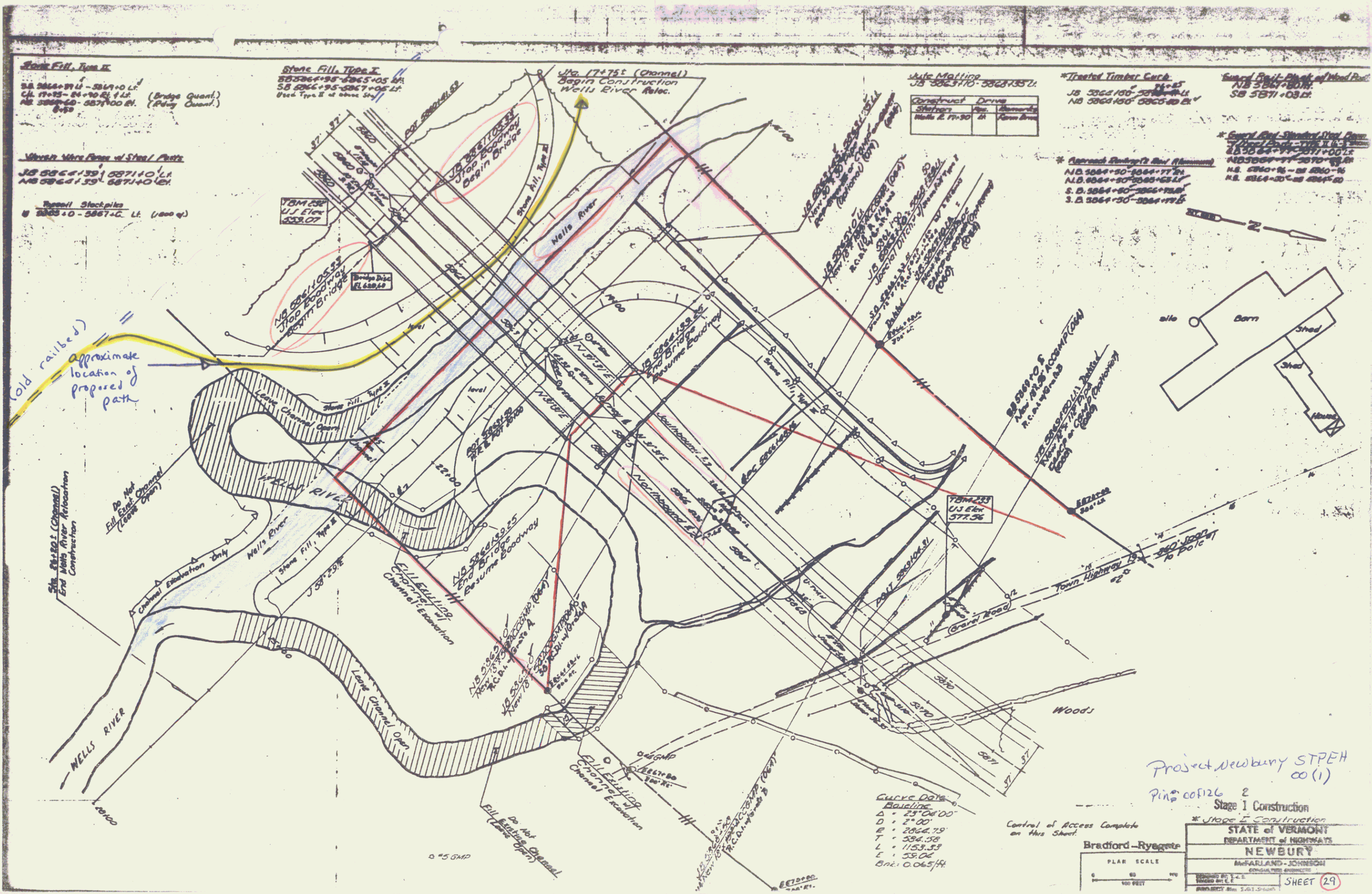
Treated Timber Curb
 JB 2864+100 - 2864+41
 NB 2864+100 - 2865+40 El.

General Exc. Standard Over Pass
 NB 2864+100 - 2864+41
 NB 2864+100 - 2865+40 El.

Approach Roadway (2' x 11' Minimum)
 NB 2864+100 - 2864+77 El.
 NB 2864+100 - 2865+65 El.
 S. D. 2864+100 - 2865+78 El.
 S. D. 2864+100 - 2864+77 El.

General Exc. Standard Over Pass
 NB 2864+100 - 2864+41
 NB 2864+100 - 2865+40 El.

General Exc. Standard Over Pass
 NB 2864+100 - 2864+41
 NB 2864+100 - 2865+40 El.



CURVE DATA
 Baseline
 Δ = 25° 04' 00"
 D = 2° 00'
 E = 2864.75
 T = 236.58
 L = 1153.33
 E = 55.04
 Bkt. 0.065/H

Bradford-Ryegate
 PLAN SCALE
 1" = 40 FEET

Project Newbury STPEH
 CO (1)
 Pin # 005126 2
 Stage 1 Construction

STATE OF VERMONT
 DEPARTMENT OF HIGHWAYS
NEWBURY
 McFARLAND-JOHNSON
 CONSULTING ENGINEERS
 SHEET 29

