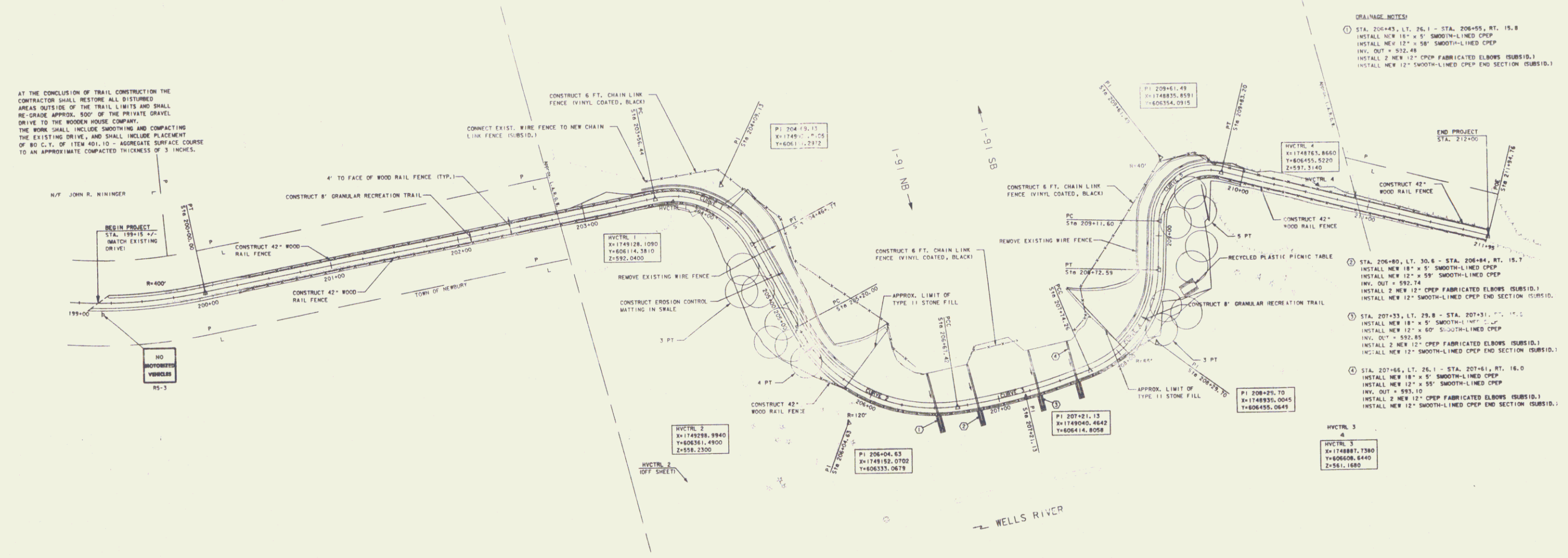
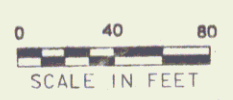


AT THE CONCLUSION OF TRAIL CONSTRUCTION THE CONTRACTOR SHALL RESTORE ALL DISTURBED AREAS OUTSIDE OF THE TRAIL LIMITS AND SHALL RE-GRADE APPROX. 300' OF THE PRIVATE GRAVEL DRIVE TO THE WOODEN HOUSE COMPANY. THE WORK SHALL INCLUDE SMOOTHING AND COMPACTING THE EXISTING DRIVE, AND SHALL INCLUDE PLACEMENT OF 80 C.Y. OF ITEM 401.10 - AGGREGATE SURFACE COURSE TO AN APPROXIMATE COMPACTED THICKNESS OF 3 INCHES.



- DRAINAGE NOTES:**
- ① STA. 206+43, LT. 26.1 - STA. 206+55, RT. 15.8
INSTALL NEW 18" x 5' SMOOTH-LINED CPEP
INSTALL NEW 12" x 58" SMOOTH-LINED CPEP
INV. OUT = 592.48
INSTALL 2 NEW 12" CPEP FABRICATED ELBOWS (SUBSID.)
INSTALL NEW 12" SMOOTH-LINED CPEP END SECTION (SUBSID.)
 - ② STA. 206+80, LT. 30.8 - STA. 206+84, RT. 18.7
INSTALL NEW 18" x 5' SMOOTH-LINED CPEP
INSTALL NEW 12" x 58" SMOOTH-LINED CPEP
INV. OUT = 592.74
INSTALL 2 NEW 12" CPEP FABRICATED ELBOWS (SUBSID.)
INSTALL NEW 12" SMOOTH-LINED CPEP END SECTION (SUBSID.)
 - ③ STA. 207+33, LT. 28.8 - STA. 207+31, RT. 17.1
INSTALL NEW 12" x 50" SMOOTH-LINED CPEP
INV. OUT = 592.85
INSTALL 2 NEW 12" CPEP FABRICATED ELBOWS (SUBSID.)
INSTALL NEW 12" SMOOTH-LINED CPEP END SECTION (SUBSID.)
 - ④ STA. 207+66, LT. 26.1 - STA. 207+61, RT. 16.0
INSTALL NEW 18" x 5' SMOOTH-LINED CPEP
INSTALL NEW 12" x 58" SMOOTH-LINED CPEP
INV. OUT = 595.10
INSTALL 2 NEW 12" CPEP FABRICATED ELBOWS (SUBSID.)
INSTALL NEW 12" SMOOTH-LINED CPEP END SECTION (SUBSID.)

DATUM
VERTICAL _____
HORIZONTAL _____



*Project Newbury STP EH 00(1)
Pin 00F126*

PROJECT: CROSS VERMONT TRAIL	PROJECT NO.:
DESIGN FILE NAME: nh-bed\projects\5155\cod\te\5155wrk.dgn	P. I. DATE:
IPARM FILE NAME:	

VHB Vanasse Hangen Brustlin, Inc.

SHEET: **4** OF 12