

ABM INFO		SHOP BILL			JOB NO.	DRG. NO.		
PAGE	LINE	NO.	DESCRIPTION	FT	IN	ASSEM. SHIPPING MARK	REMARKS	WEIGHT
1	1	1	EXP. JOINT ASSY	51	0	EV1		
		1	L 8 X 4 X 1/2	25	9	aal <sup>R</sup>		
		1	DO	25	4	aal <sup>L</sup>		
		1	DO	25	4	abl <sup>R</sup>		
		1	DO	25	9	abl <sup>L</sup>		
		4	BAR 1/4 X 5 1/2	12	0	bb <sup>L</sup>		
		2	DO	10	8	bb <sup>R</sup>		
		2	DO	11	2	bb <sup>L</sup>		
		10	R 1/2 X 8	10		be <sup>L</sup>		
		10	R 1/2 X 6	10		be <sup>R</sup>		
		128	3/8\" H.S. BOLTS	2	4	mb <sup>L</sup>		
		128	3/8\" CLOSED THREADED ANCH. FERRULES	2	4	mb <sup>R</sup>		
		122	3/8\" ANCH. STUDS	10		mb <sup>L</sup>		
		1	PREFORMED FABRIC	52	0	mf <sup>L</sup>		
		2	1/2\" M. BOLT	1		SHOP		
		40	1\" THREADED RODS	7		TS1		
		80	1\" HEX NUTS			SHOP		
		80	BAR 3/8 X 3/8	3		WI		
		9	4 X 4 X 3/8	1	0	SA1		
		18	3/8\" H.S. BOLTS	3		SHOP		
		2	OUTLET RUBBER TAPES 1/8 X 3/4	52	0	mb <sup>L</sup>		
		2	R 3/8 X 13 1/2	3		CP1		
		2	R 3/8 X 6 5/8	1		CP10		
		1	R 3/8 X 8 1/2	1		CP16		
		1	R 3/8 X 9 3/4	1		CP19		
		2	R 3/8 X 12 1/2	3		CP2		
		2	R 3/8 X 6 1/4	1		CP20		
		1	R 3/8 X 8 3/8	1		CP21		
		1	R 3/8 X 9 3/8	1		CP22		
		2	R 3/8 X 9 3/4	3		CP23		
		2	R 3/8 X 6 1/4	1		CP30		
		1	R 3/8 X 8 3/8	1		CP31		
		1	R 3/8 X 9 3/8	1		CP32		
		2	R 3/8 X 9 3/4	3		CP4		
		2	R 3/8 X 5 3/8	1		CP5		
		1	R 3/8 X 7 3/4	1		CP6		
		1	R 3/8 X 9	1		CP6		
		1	R 3/8 X 9	1		CP7		
		1	R 3/8 X 9	1		CP8		
		1	R 3/8 X 9	2		CP5		
		1	R 3/8 X 8 3/8	2		CP6		
		1	R 3/8 X 9 3/8	2		CP7		
		1	R 3/8 X 9	2		CP8		
		16	BAR 5/8 X 3/8	5		SP1		
		16	BAR 4 X 3/8	4		SP2		
		4	4 X 4 X 3/8	2		AL		
		12	3/4\" H.S. BOLTS	2		mb <sup>L</sup>		

OUT FOR APPROVAL	6-24-03
OUT FOR APPROVAL	
ISSUED TO SHOP	
FIELD & OFFICE	

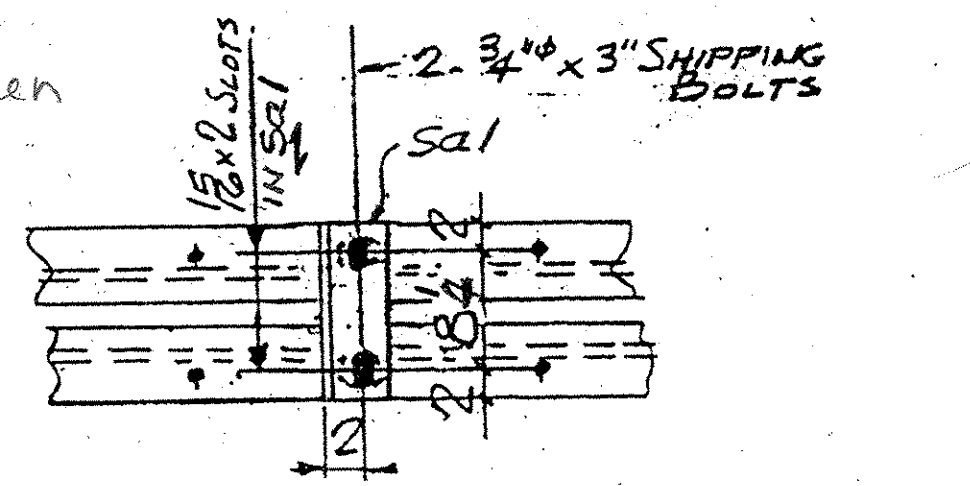
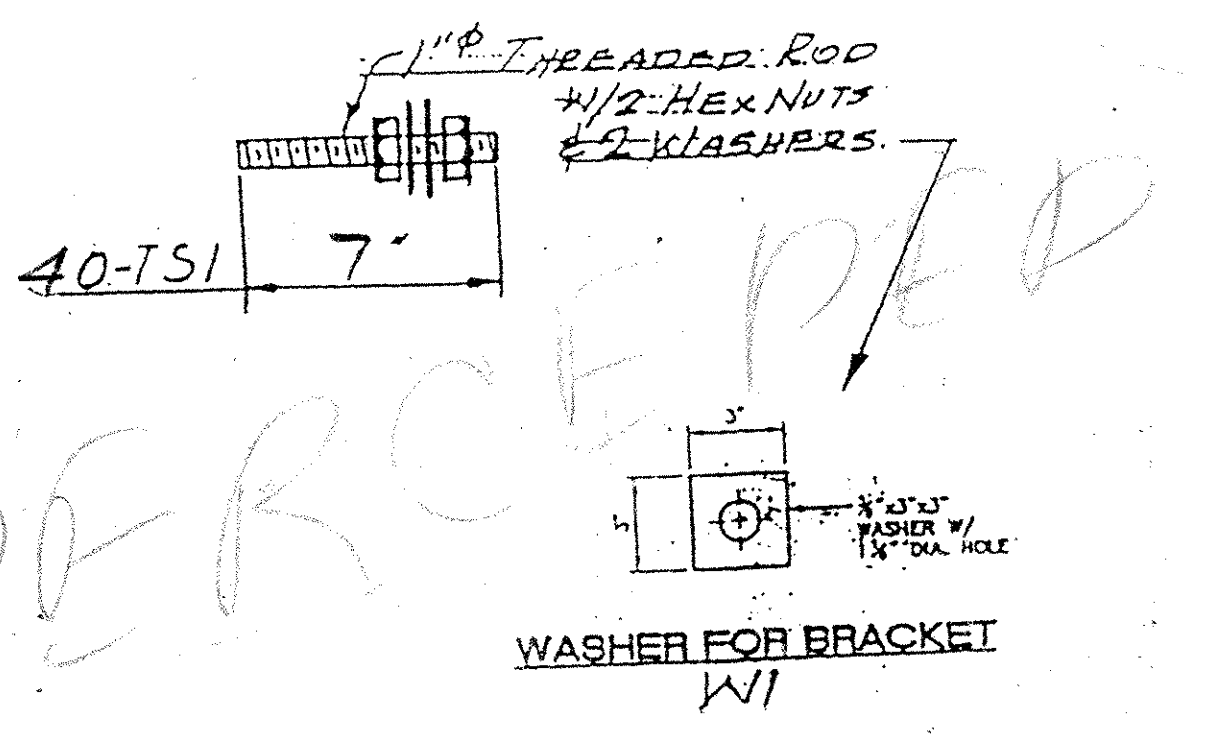
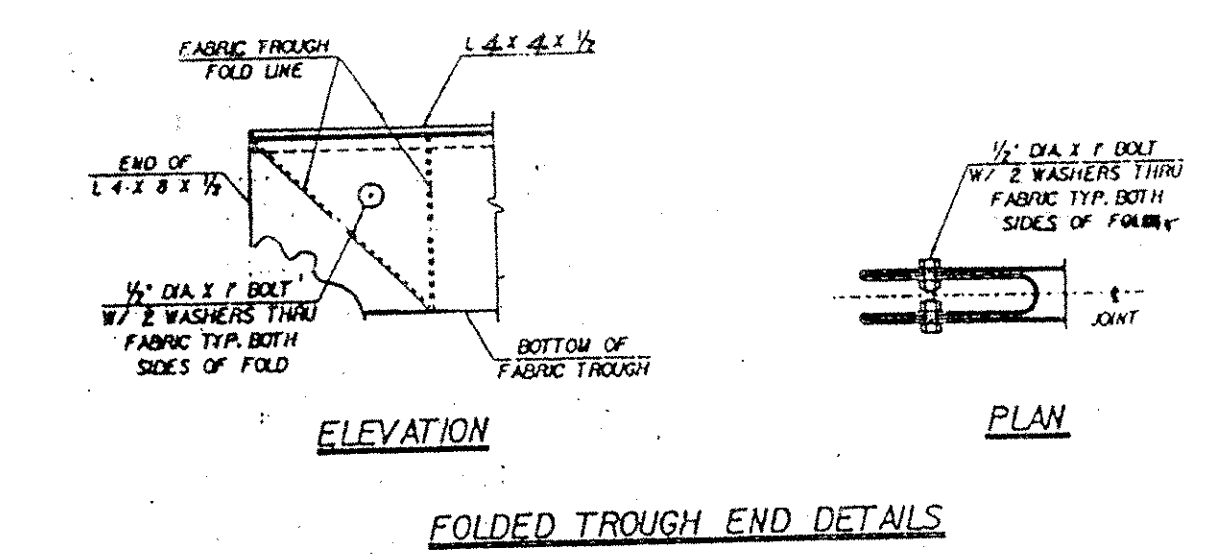
REV.	REMARKS	DATE	DWN.	CHK.	APP.	O.A.	NO.	DIA.	LGT.	TYPE	WASHER
PROJECT NO.	IM-091-(136)	STATE BRIDGE NO.	38								
MATERIALS	ASTM A370	ELECTRODES	3BE								
SURFACE PREP. & PAINT:		HOLES	AS NOTED								
		SHOP BOLTS:	3/4\"								
			M-14-GALV.								

DESCRIPTION: EXP. JOINT - PIER 1		DRAWN BY	DATE
JOB: SUS ROUTE 5 OVER I-91 HARTLAND, VT.		CHKD BY	JPF 6-03
CUSTOMER: F.W. WHITCOMB		APPROV BY	G.A.
CASCO BAY STEEL STRUCTURES, INC.		JOB NO.	198
75 SPRING HILL ROAD SACO, MAINE 04072		DRG. NO.	J1
PHONE (207) 282-7360 FAX (207) 282-1179		REV.	091

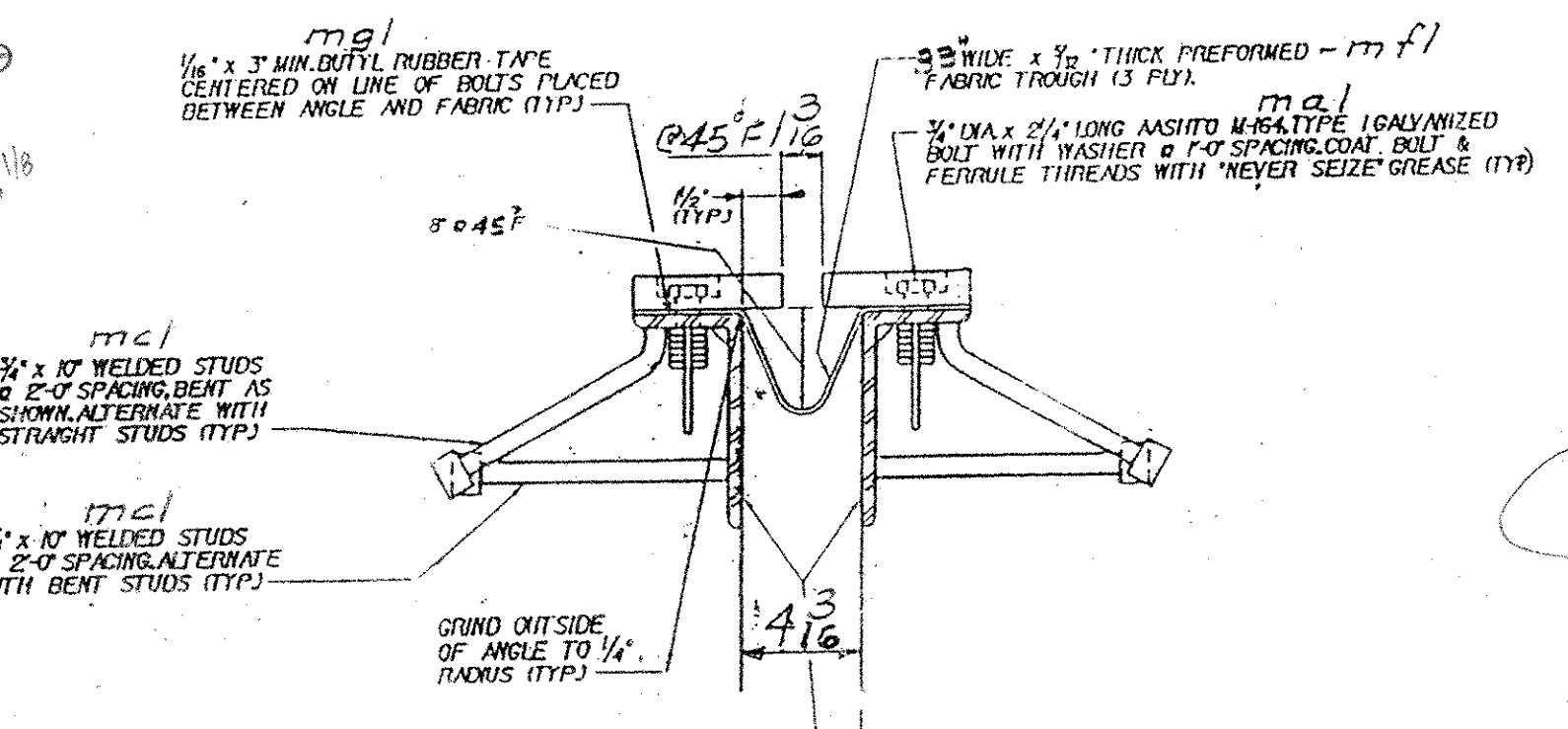
VENDOR SUBMITTAL REVIEW	
REVIEW STATUS	CONTRACTOR ACTION
APPROVED	NONE
APPROVED AS REVISED	CONFIRM
REJECTED	RESUBMIT

REVIEW IS FOR GENERAL CONFORMANCE WITH THE DESIGN CONCEPT AND CONTRACT DOCUMENTS. MANUFACTURER'S COMMENTS SHALL NOT BE CONSIDERED AS RELIEVING THE CONTRACTOR FROM COMPLIANCE WITH THE PROJECT PLANS AND SPECIFICATIONS. MANUFACTURER'S COMMENTS SHALL BE THE PROPERTY OF THE CONTRACTOR. THE CONTRACTOR REMAINS RESPONSIBLE FOR OBTAINING AND OBTAINING DIMENSIONS FOR SELECTIVE FABRICATION PROCESSES FOR TECHNOLOGY ASSISTED FABRICATION. REVIEW FOR PERFORMING HIS WORK IN A SAFE MANNER.

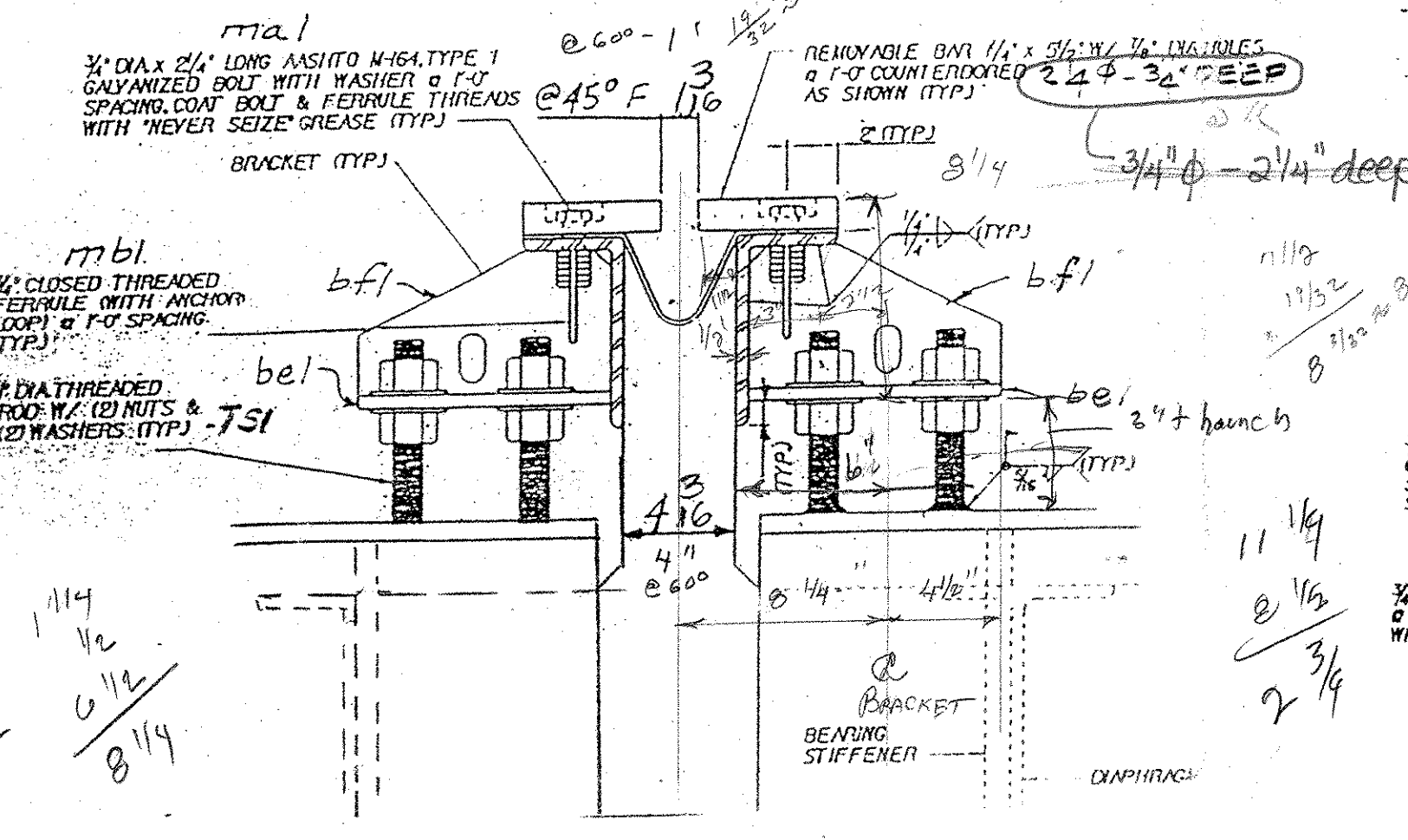
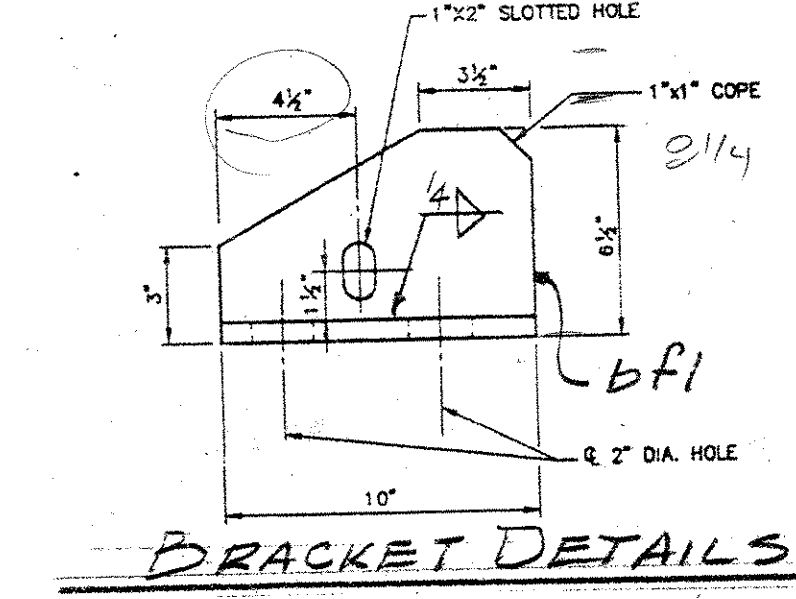
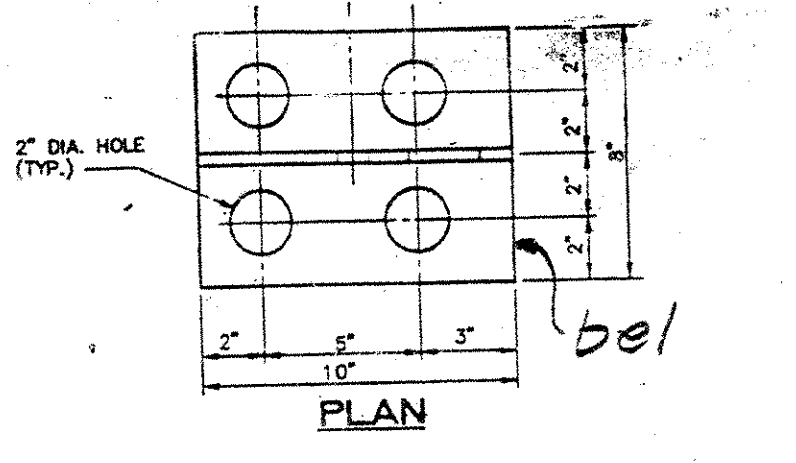
By: *Martha Jew* DATE: 7/15/03



SHIPPING DEVICE SPACED 540.00 MAX. (9 REQ'D)



TYP. SECT. BETWEEN GIRDERS



TYP. SECTION @ GIRDERS

ALL MATERIALS AND CONSTRUCTION SHALL CONFORM TO STATE OF VERMONT AGENCY OF TRANSPORTATION STANDARD SPECIFICATIONS FOR CONSTRUCTION DATED 1990, AND ITS LATEST REVISIONS, AND THE AASHTO STANDARD SPECIFICATIONS FOR HIGHWAY BRIDGES, DATED 1996, AND ITS LATEST REVISIONS.

SUPERCEP'D