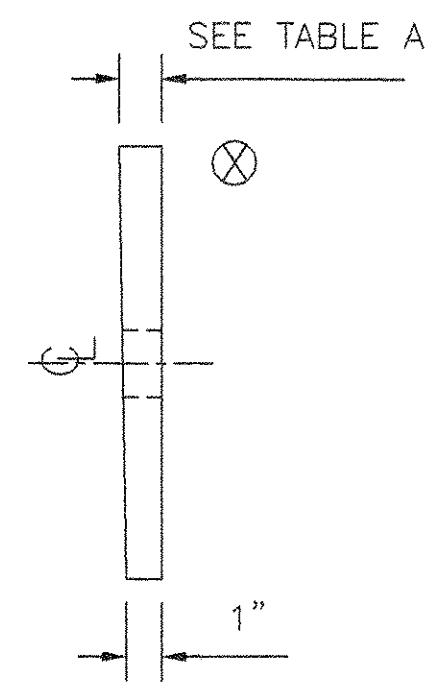


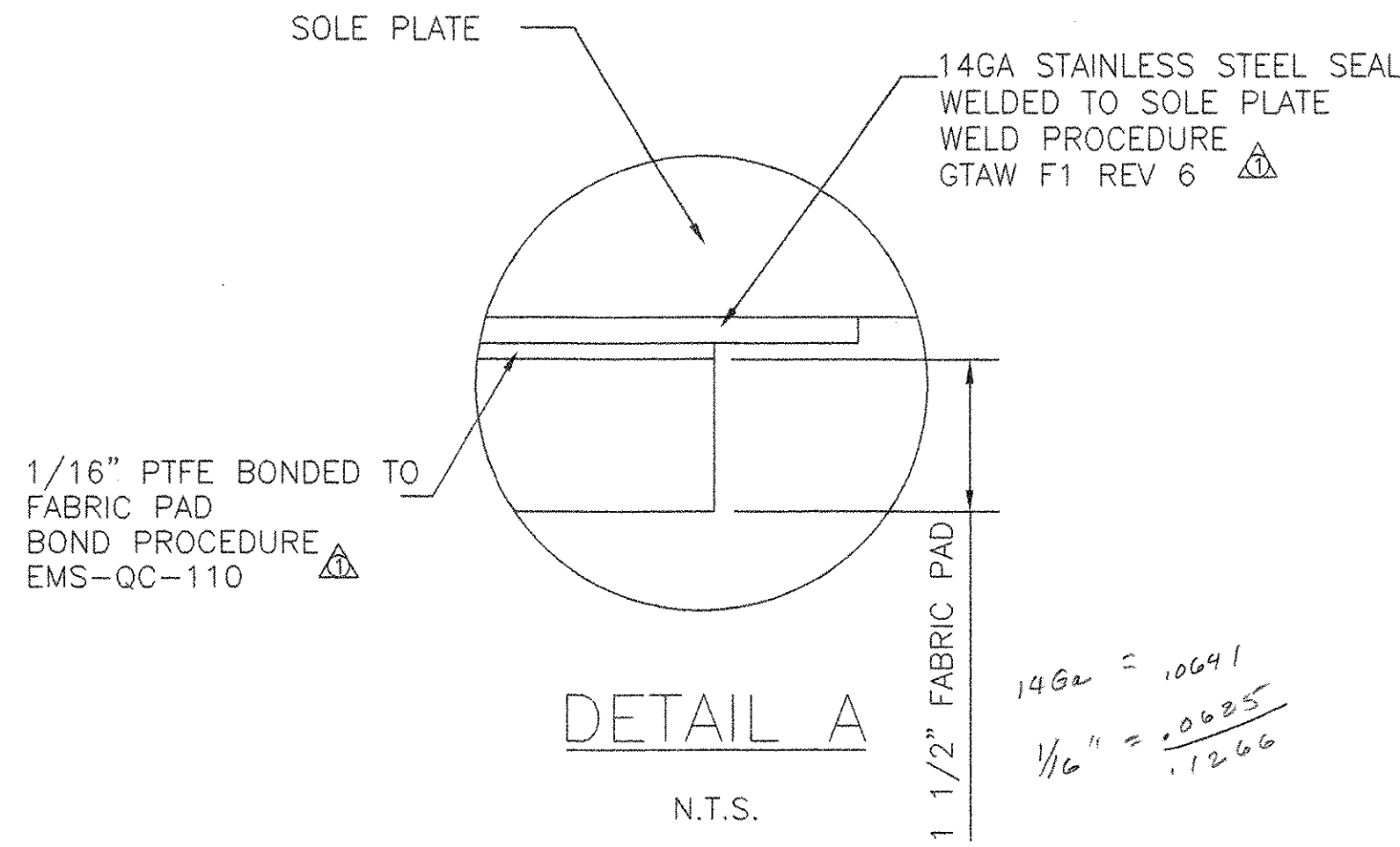
PLAN

FIXED PREFORMED FABRIC PAD BEARINGS
LOCATION: B16-B20
QUANTITY: 5

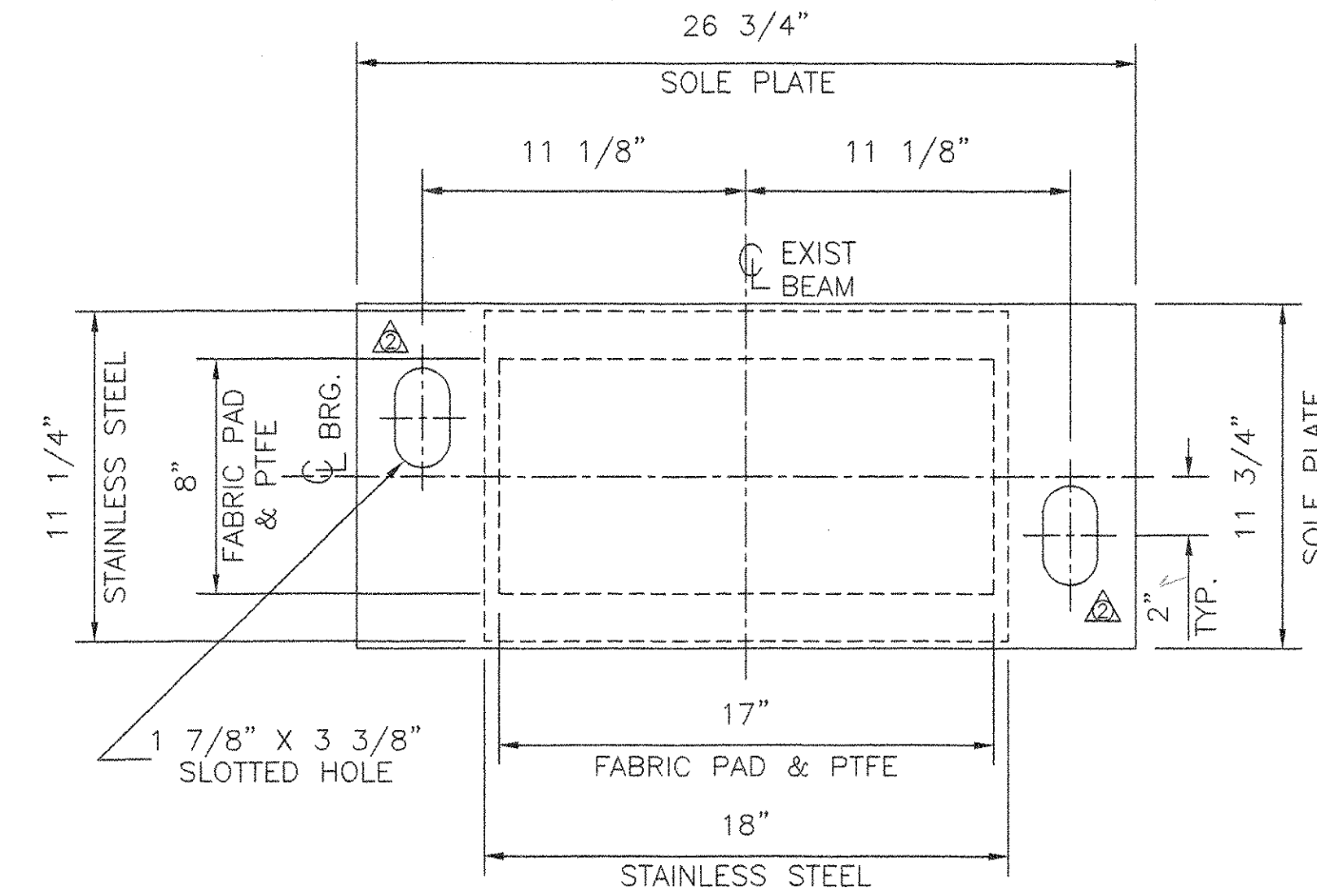


SIDE ELEVATION

SOLE PLATE ONLY
B16-B20

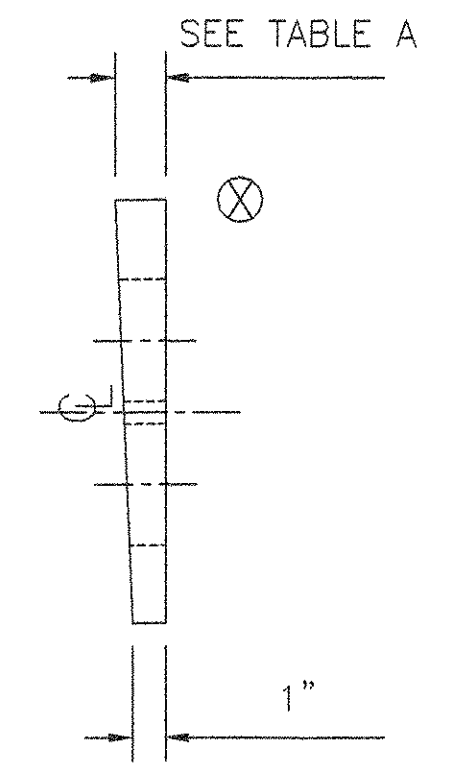


DETAIL A
N.T.S.



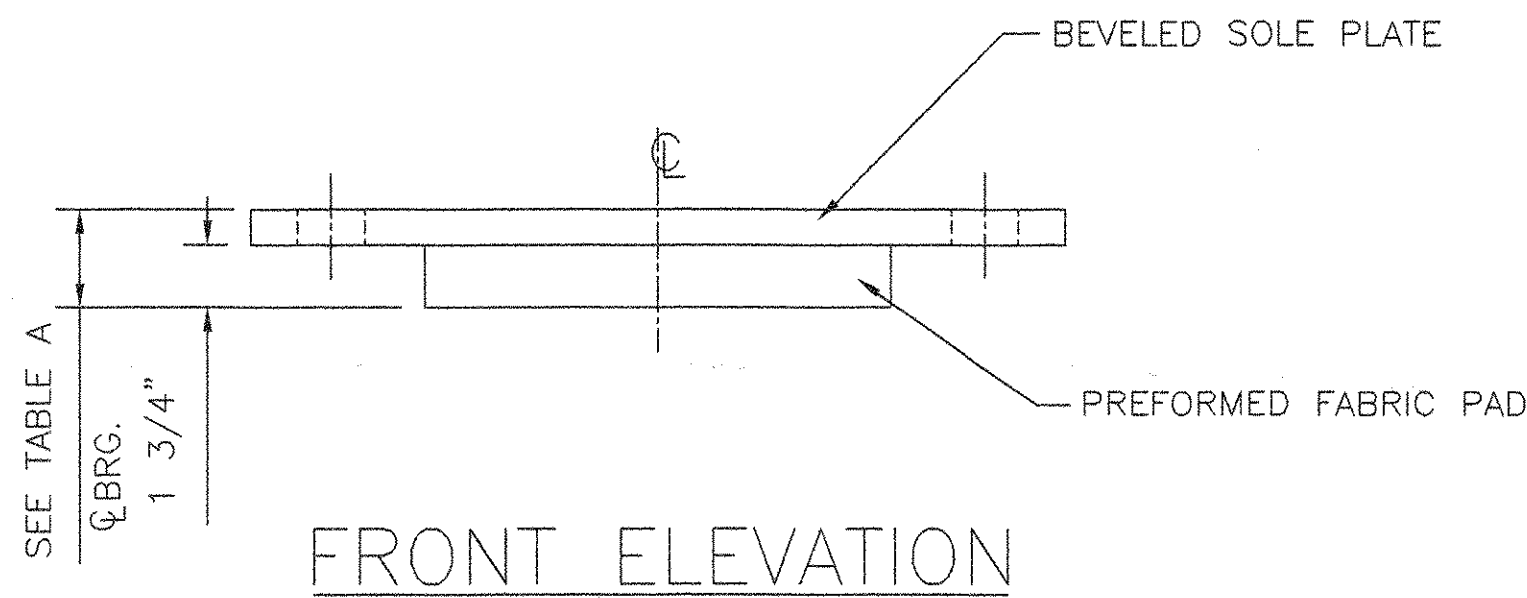
PLAN

EXPANSION PREFORMED FABRIC PAD BEARING
LOCATION: B41-B45 PIER 4 SPAN 5
QUANTITY: 5



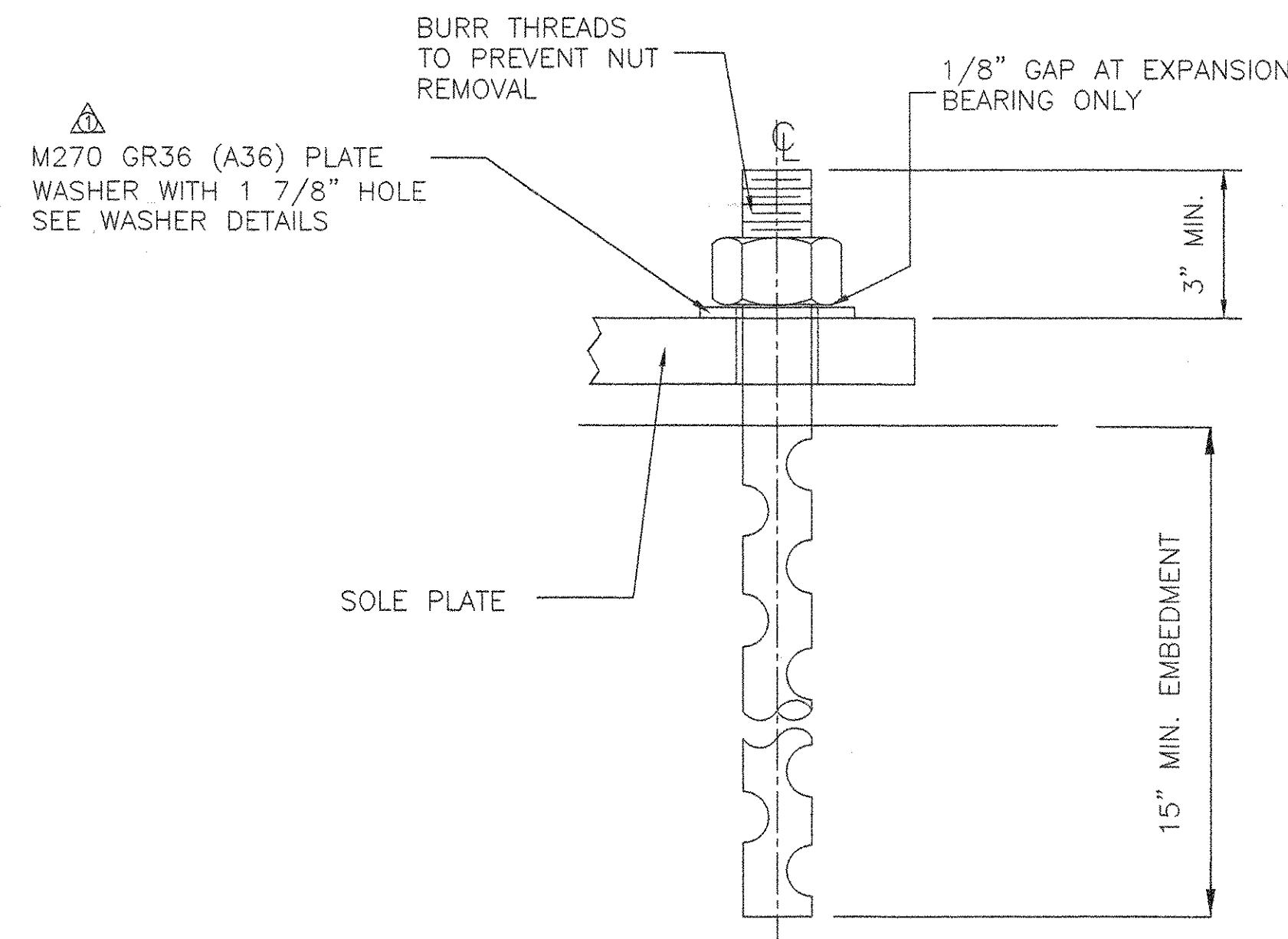
SIDE ELEVATION

SOLE PLATE ONLY
B41-B45



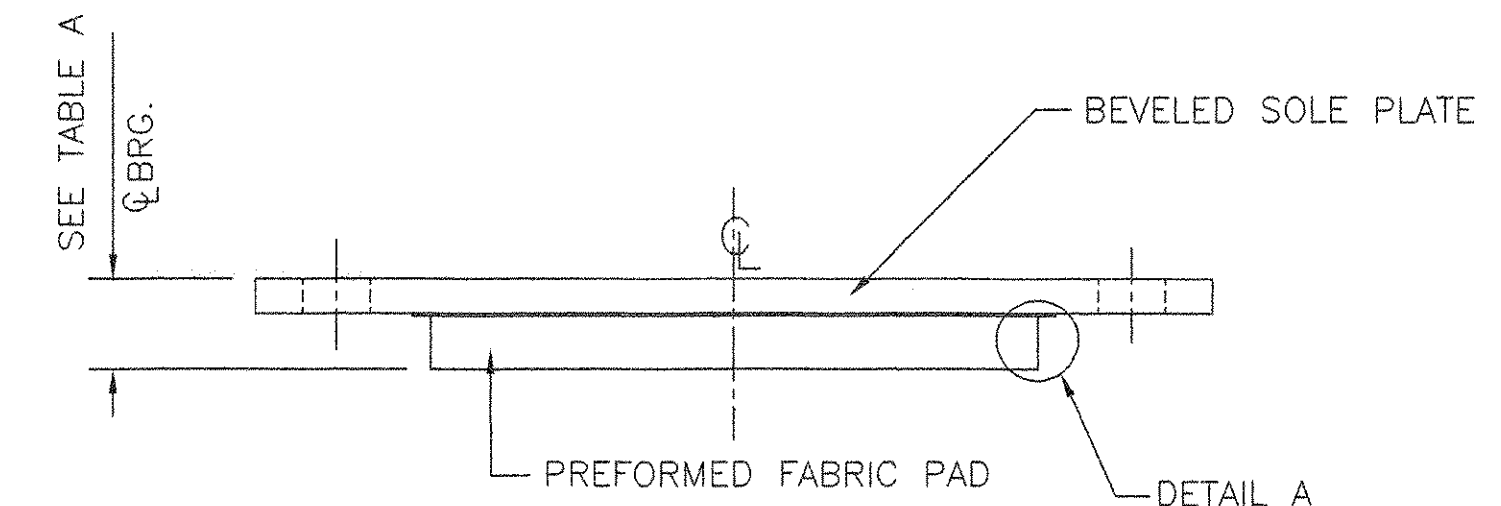
FRONT ELEVATION

B16-B20



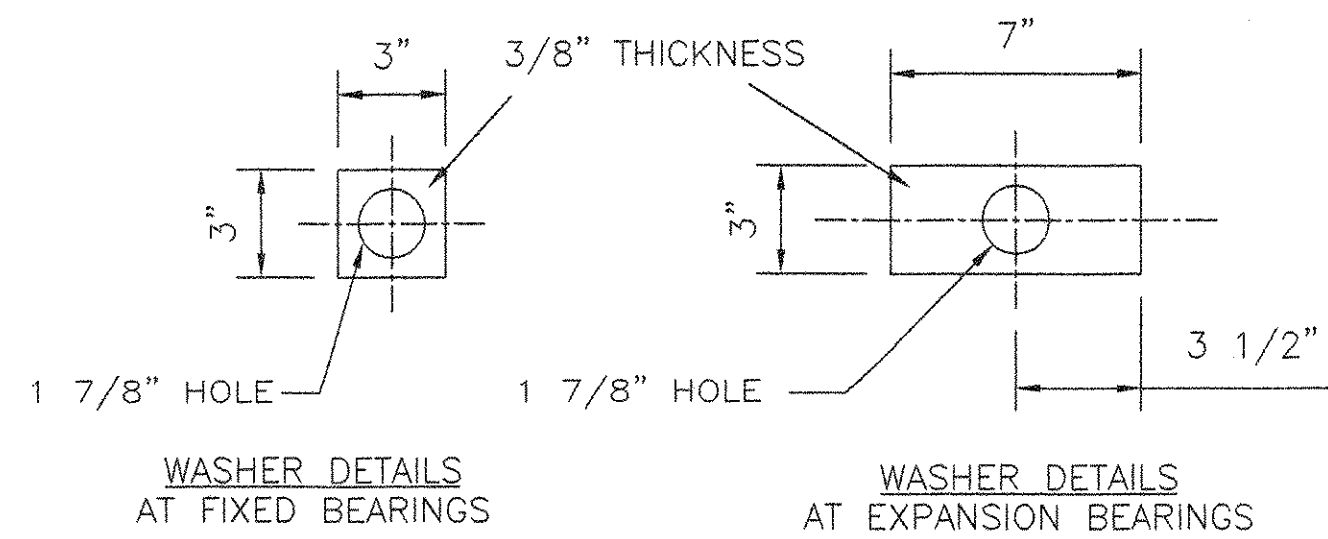
ANCHOR BOLT DETAIL

N.T.S.
1' 10" X 1 1/2" DIA AASHTO M183 SWEDGED ANCHOR BOLT, ONE M270 GR36 (A36) PLATE WASHER AND ONE HEAVY HEX NUT ALL GALVANIZED



FRONT ELEVATION

B41-B45



WASHER DETAILS AT FIXED BEARINGS

WASHER DETAILS AT EXPANSION BEARINGS

- NOTES:
1. SEE SHEET 1
2. TABLE A LOCATED ON SHEET 1

REVIEW STATUS		CONTRACTOR ACTION	
APPROVED	APPROVED AS REVISED	NONE	CORRECT
REJECTED		RESUBMIT	

REVIEW IS FOR GENERAL CONFORMANCE WITH THE DESIGN CONCEPT AND CONTRACT DOCUMENTS. MARKINGS OF COMMENTS SHALL NOT BE CONSIDERED AS RELIEVING THE CONTRACTOR FROM COMPLYING WITH THE PROJECT PLANS AND SPECIFICATIONS. THE CONTRACTOR REMAINS RESPONSIBLE FOR THE TECHNICAL ASPECTS OF THE DESIGN AND FOR THE QUALITY OF THE WORK. APPROVED BY: [Signature] DATE: 22/6/03

STATE OF VERMONT
AGENCY OF TRANSPORTATION
PROJECT NO. IM 091-1(36)
BRIDGE 38
HIGHWAY NO. 1-91
TOWN OF HARTLAND
SHEET 2 OF 3

COSMEC, INC. 70 SOUTH STREET WALPOLE, MA. 02081

SCALE: 3/16"=1" DRAWN BY: MK CHECK BY: RFC DATE: 6/17/03 DATE: 6/30/03

REV.	DESCRIPTION	BY	DATE	CHECKED	DATE
1	CHANGED HOLE LOCATIONS FOR B41-B45 PIER 4 SPAN 5	MK	7/22/03	MCM	7/22/03
2	ADDED WELD PROC. + BOND PROC., M270 GR36, AASHTO M183 WAS A36	MK	7/15/03	NH	7/15/03

S.O. NUMBER	DRAWING NUMBER	REV.
59856	3898	2