

PLAN
FIXED PREFORMED FABRIC PAD BEARING
LOCATION: B2-B5
QUANTITY: 4

PLAN
FIXED PREFORMED FABRIC PAD BEARING
LOCATION: B1, B21-B30
QUANTITY: 11

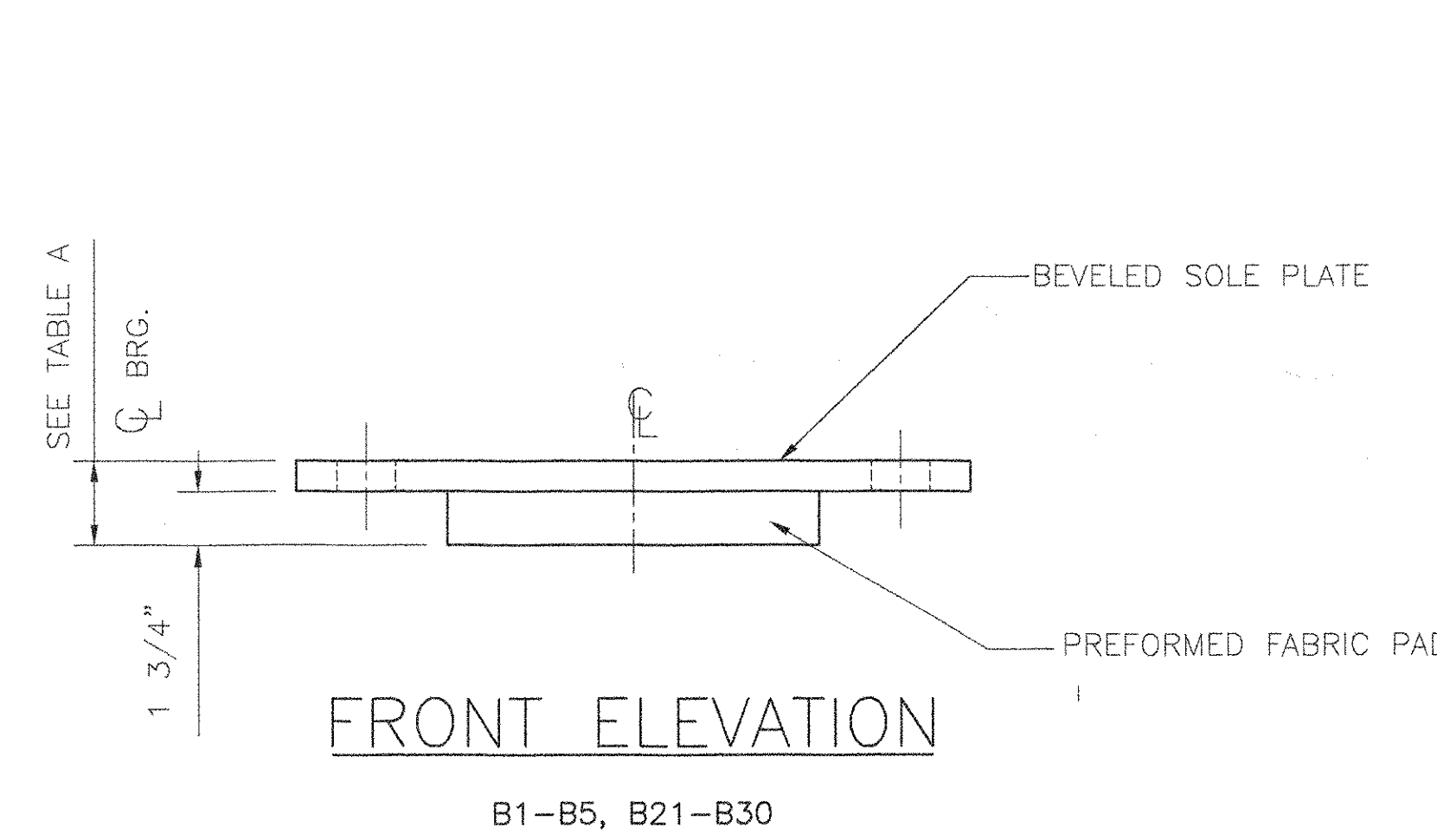
SOLE PLATE ONLY
LOCATION: B1-B5, B21-B30

PLAN
FIXED PREFORMED FABRIC PAD BEARING
LOCATION: B46-B49 ABUTMENT 2
QUANTITY: 4

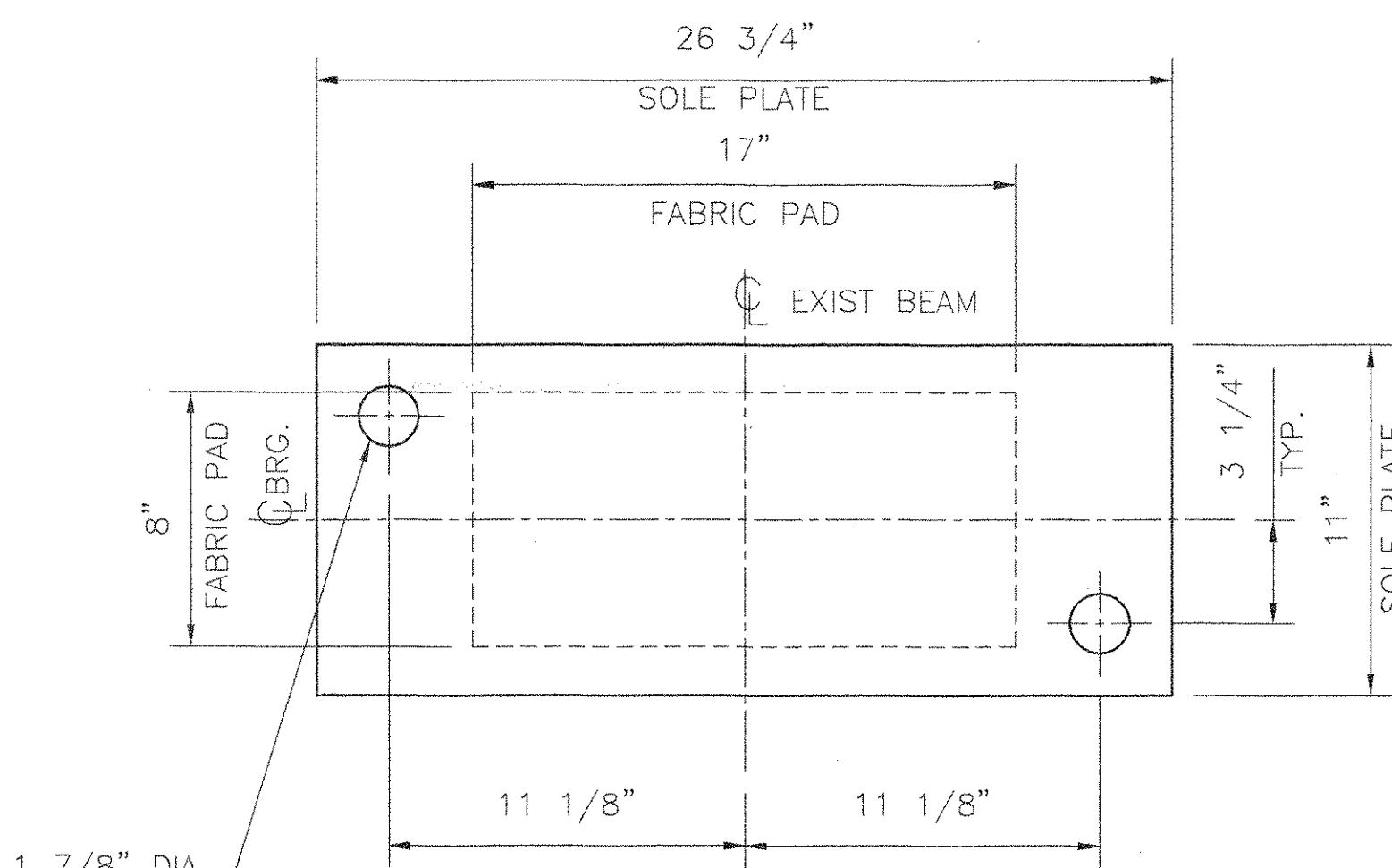
SOLE PLATE ONLY
B46-B49 ABUTMENT 2

PLAN
FIXED PREFORMED FABRIC PAD BEARINGS
LOCATION: B31-B35 PIER 3, SPAN 4
QUANTITY: 5

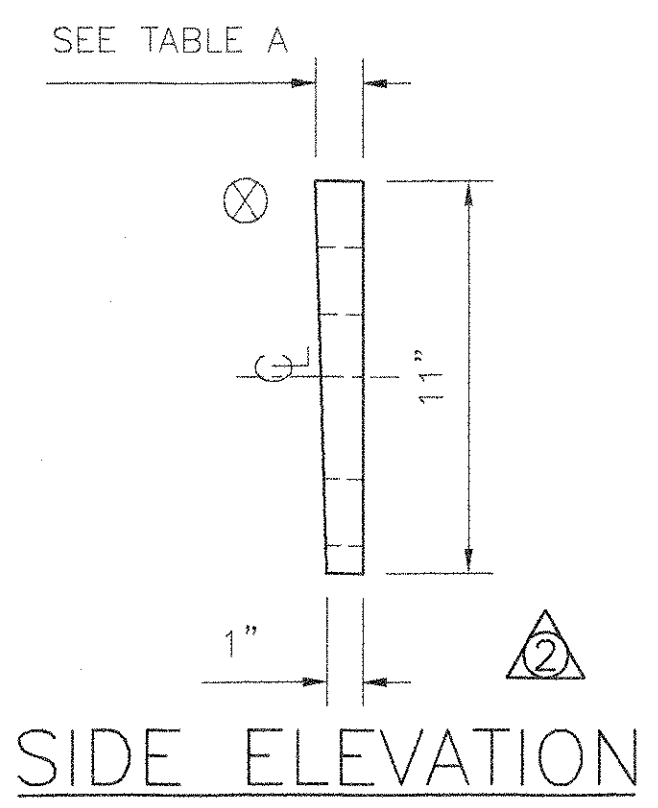
SOLE PLATE ONLY
B31-B35



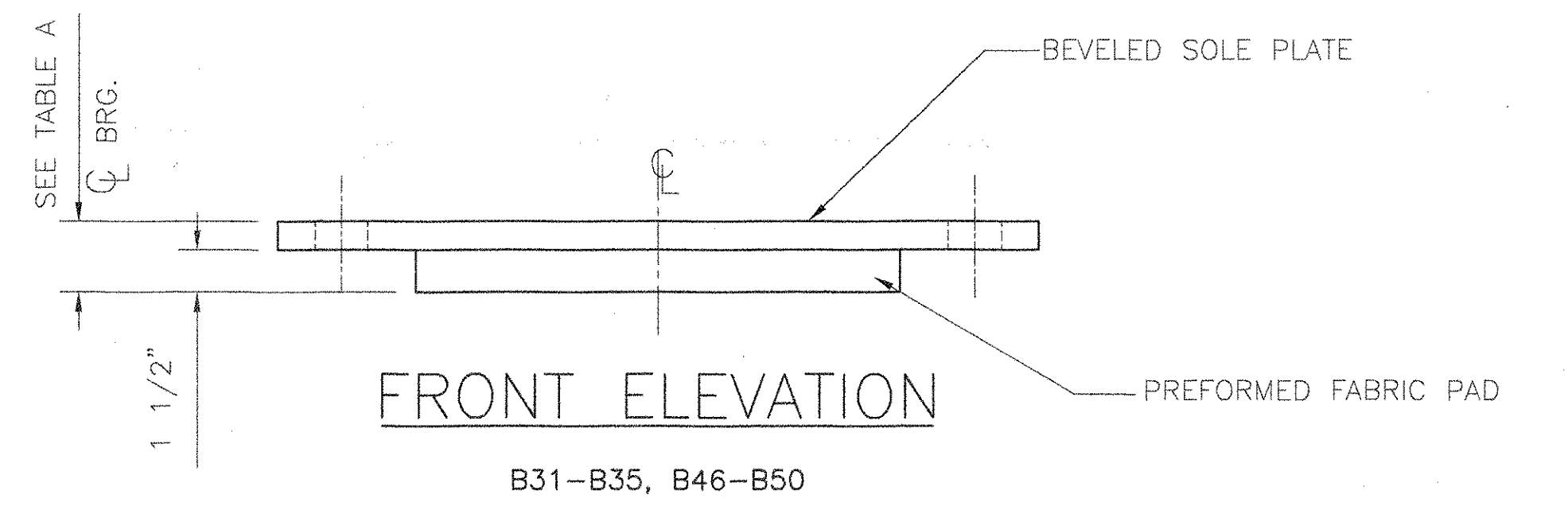
FRONT ELEVATION
B1-B5, B21-B30



PLAN
FIXED PREFORMED FABRIC PAD BEARING
LOCATION: B50 ABUTMENT 2
QUANTITY: 1



SOLE PLATE ONLY
B50 ABUTMENT 2



FRONT ELEVATION
B31-B35, B46-B50

TABLE A

| | SOLE PLATES | SOLE PLATE THICKNESS AT CENTER LINE | THICK END OF BEVEL | BEARING ASSEMBLY HEIGHT AT CENTER LINE |
|-------|-------------|-------------------------------------|--------------------|--|
| SHT 1 | FIX B1-B5 | 1.41" | 1.82" | 3.16" |
| SHT 3 | EXP B6-B10 | 1.39" | 1.78" | 3.26" |
| SHT 3 | EXP B11-B15 | 1.41" | 1.82" | 3.28" |
| SHT 2 | FIX B16-B20 | 1.35" | 1.70" | 3.1" |
| SHT 1 | FIX B21-B25 | 1.32" | 1.64" | 3.07" |
| SHT 1 | FIX B26-B30 | 1.29" | 1.58" | 3.04" |
| SHT 1 | FIX B31-B35 | 1.24" | 1.48" | 2.74" |
| SHT 3 | EXP B36-B40 | 1.24" | 1.48" | 2.86" |
| SHT 2 | EXP B41-B45 | 1.20" | 1.40" | 2.82" |
| SHT 1 | FIX B46-B50 | 1.16" | 1.32" | 2.66" |

MATERIAL:
 STEEL- AASHTO M-270, GRADE 36 (ASTM A709 GR.36) METALIZED STAINLESS STEEL- ASTM A240 TYPE 304, 10 RMS FINISH OR LESS
 PTFE- ASTM D1457
 PREFORMED FABRIC PAD- AASHTO 10.4.10.1
 ANCHOR BOLTS- F1554, GRADE 55, SWEDGED AND GALVANIZED

- NOTES:**
- ⊗ MARKS THE UPSTATION SIDE OF THE BEARING
 - ALL BEARING DEVICES SHALL BE METALIZED AS PER SUBSECTION 531.04 (B) AND 506.15 OF THE GENERAL SPECIAL PROVISIONS. AREAS OF METALIZING DAMAGED BY FIELD WELDING OR HANDLING SHALL BE REPAIRED IN ACCORDANCE WITH SUPPLEMENTAL SPECIFICATIONS 513 WHICH REFERENCE ASTM A760.
 - ALL CORNERS AND EDGES OF STEEL PLATES SHALL BE GROUND TO A 1/16" RADIUS.
 - BEARING MUST NOT BE DISASSEMBLED
 - LOCATION OF FABRICATION 70 SOUTH ST. WALPOLE, MA 02081
 - COSMEC REPRESENTATIVE: MR. MATT McANDREWS (508-668-6600)

| VENDOR SUBMITTAL REVIEW | |
|-------------------------|-------------------|
| REVIEW STATUS | CONTRACTOR ACTION |
| APPROVED | NONE |
| APPROVED AS REVISED | CONFIRM |
| REJECTED | RESUBMIT |

REVIEW IS FOR GENERAL CONFORMANCE WITH THE DESIGN CONCEPT AND CONTRACT DOCUMENTS. MARKINGS OF COMMENTS SHALL NOT BE CONSTRUED AS RELIEVING THE CONTRACTOR FROM COMPLIANCE WITH THE PROJECT PLANS AND SPECIFICATIONS. NON-DEPARTURES THEREFROM, THE CONTRACTOR REMAINS RESPONSIBLE FOR DETAIL AND QUANTITIES. COSMEC, INC. RESPECTFULLY REQUESTS YOUR PROCEEDURE FOR TECHNICAL ASSEMBLY AND FOR PERFORMING HIS WORK IN A SAFE MANNER.

BY: *[Signature]* DATE: 6/30/03

STATE OF VERMONT
 AGENCY OF TRANSPORTATION
 PROJECT NO. IM 091-1(36)
 BRIDGE 38
 HIGHWAY NO. 1-91
 TOWN OF HARTLAND
 SHEET 1 OF 3

COSMEC, INC. 70 SOUTH STREET WALPOLE, MA. 02081

SCALE: 3/16"=1" DRAWN BY: MK CHECK BY: RFC
 DATE: 6/17/03 DATE: 6/30/03

| REV. | DESCRIPTION | BY | DATE | CHECKED | DATE |
|------|---|----|---------|---------|---------|
| 1 | CHANGED HOLE LOCATIONS FOR ABUTMENT BEARINGS & BEARINGS @ SPAN 4 & 5, & PLAN FOR BEARING 50 | MK | 7/22/03 | MCM | 7/22/03 |
| 2 | ADDED HIDDEN LINES, SOLE PLATE & BEARING ASSY | MK | 7/15/03 | NH | 7/15/03 |

CUSTOMER: FRANK W. WHITCOMB S.O. NUMBER: 59856 DRAWING NUMBER: 3897 REV: 2