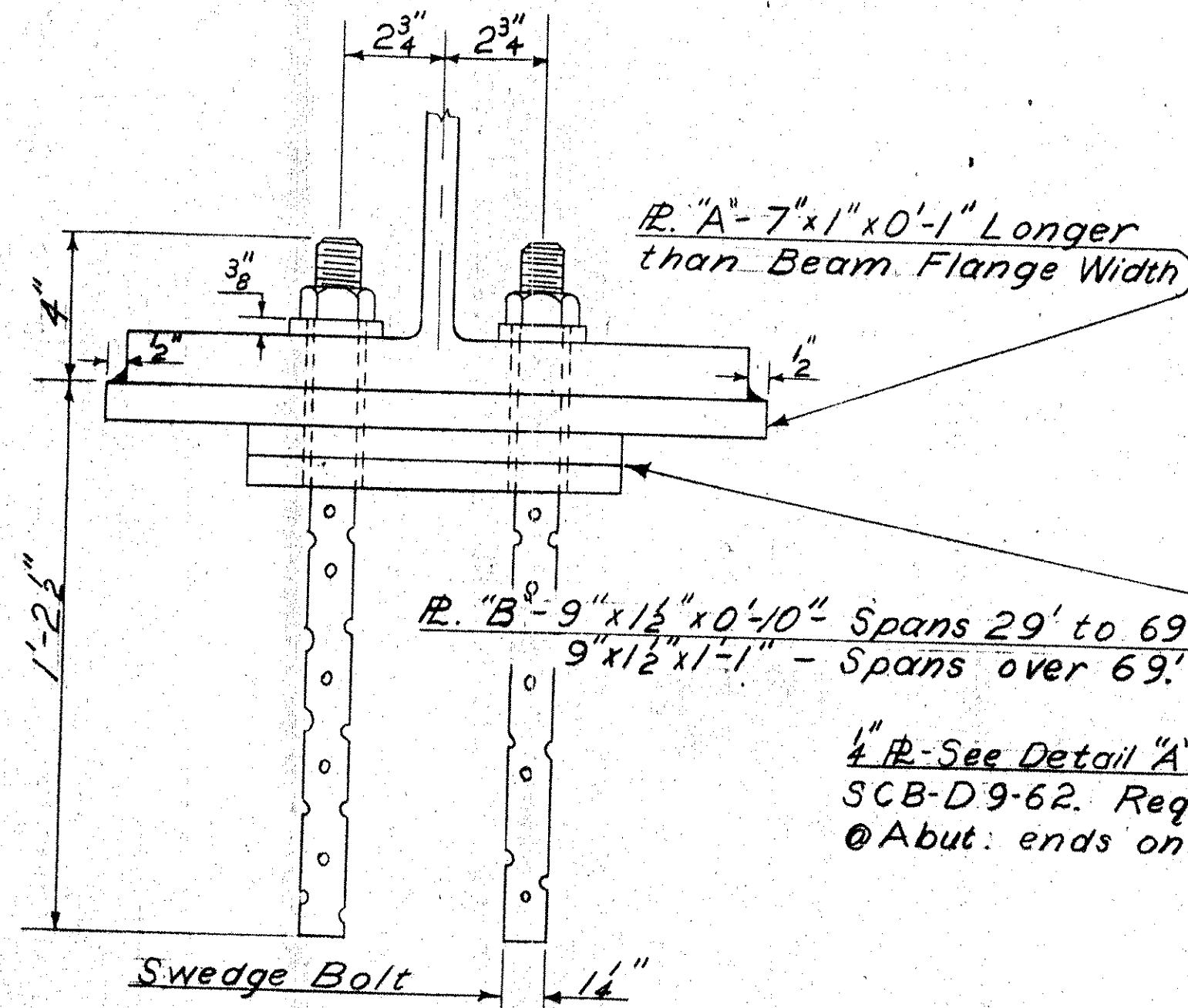
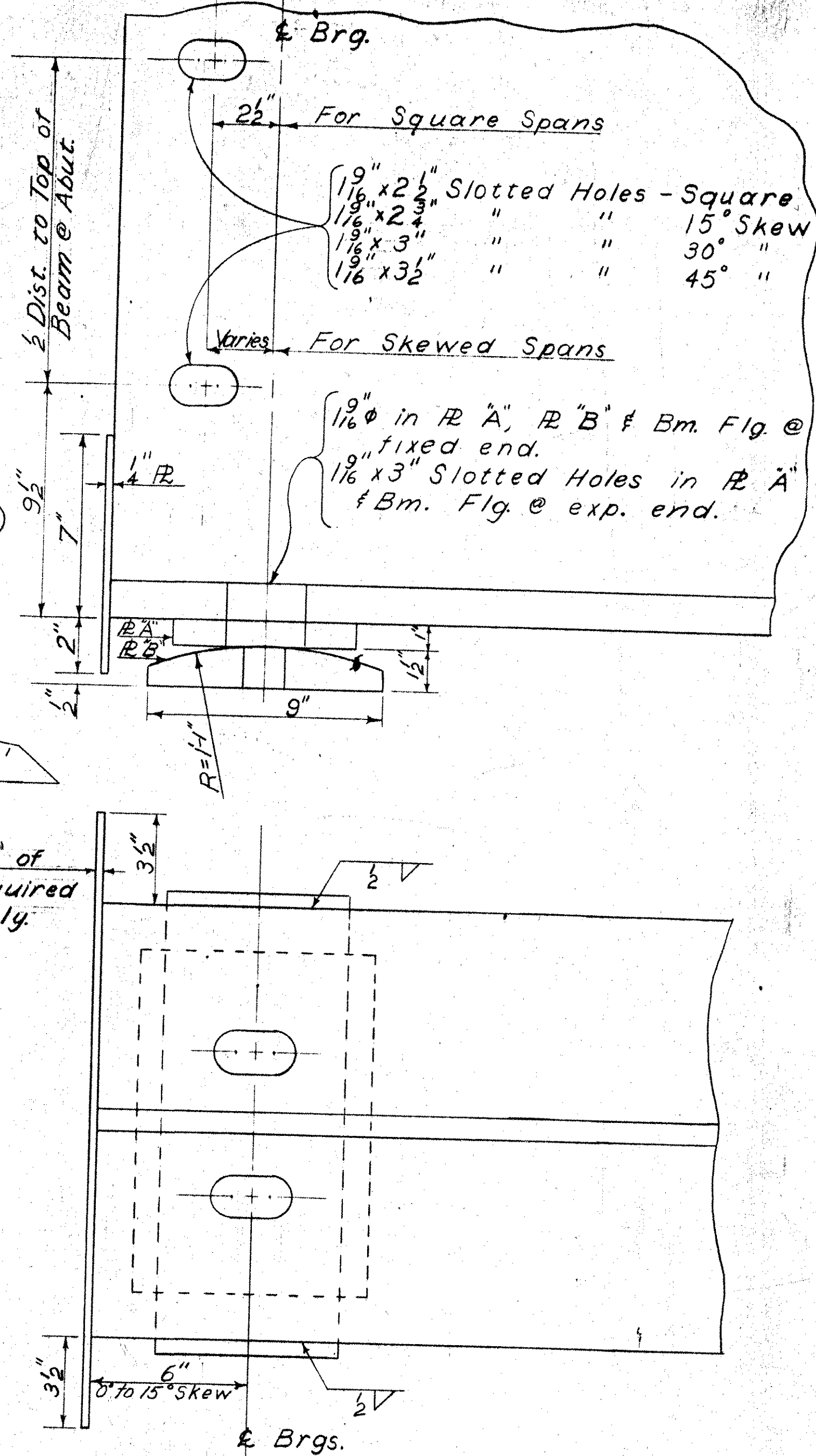


When bridge is on a grade exceeding 5%, plate "A" shall be beveled to fit, with a mean thickness of 1".



Approx. Wgt. = 90 lbs.

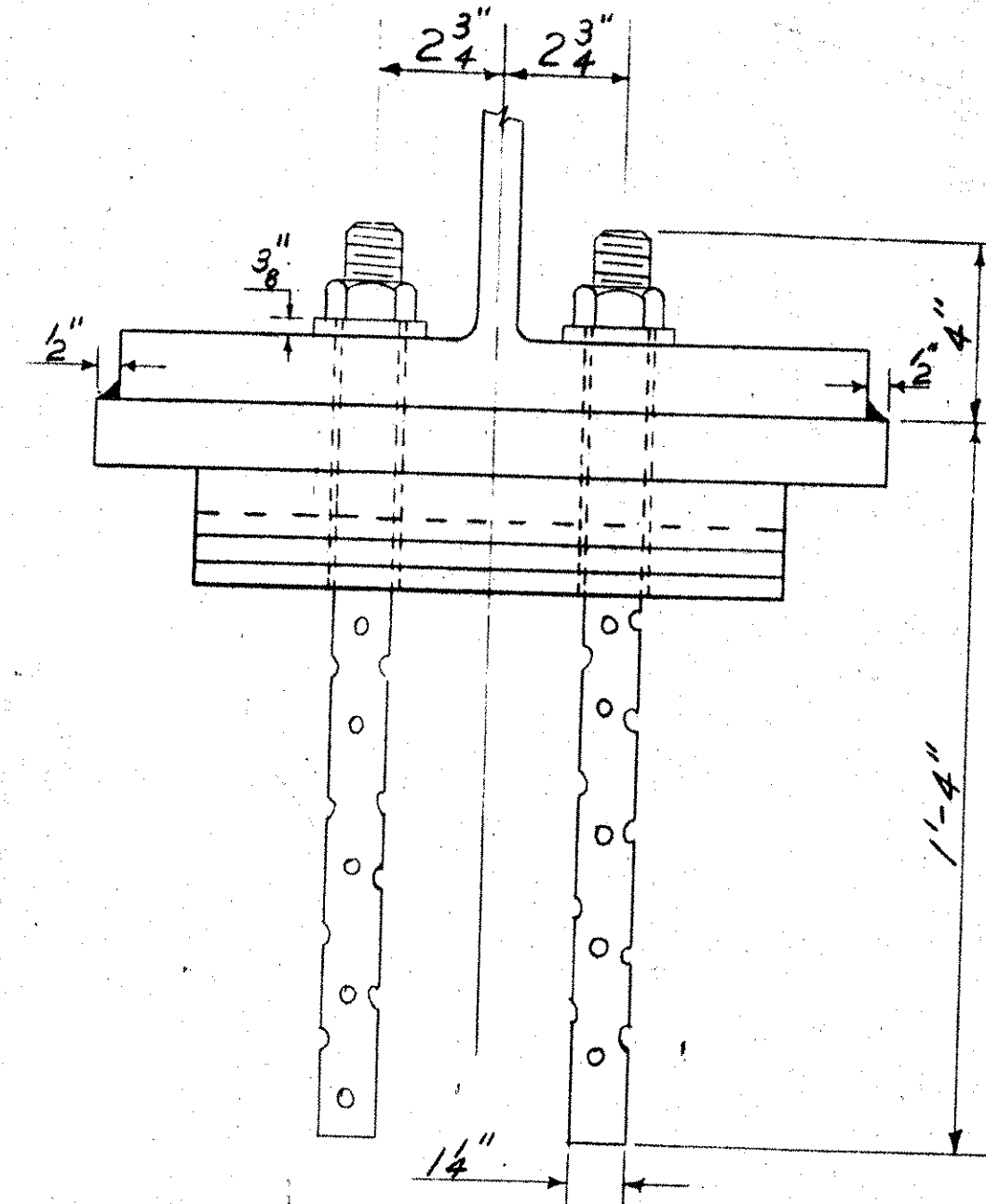
DETAIL FOR 0° TO 15° SKEW



Attention is called to State of Vermont Department of Highways Standard Specifications for Highway and Bridge Construction, Item #404, paragraph 404.02(T) for bearing materials for Shoes and Pedestals.

FIXED END BEARING DEVICE  
USE FOR EXPANSION END ON SPANS UP TO AND INCLUDING 69'

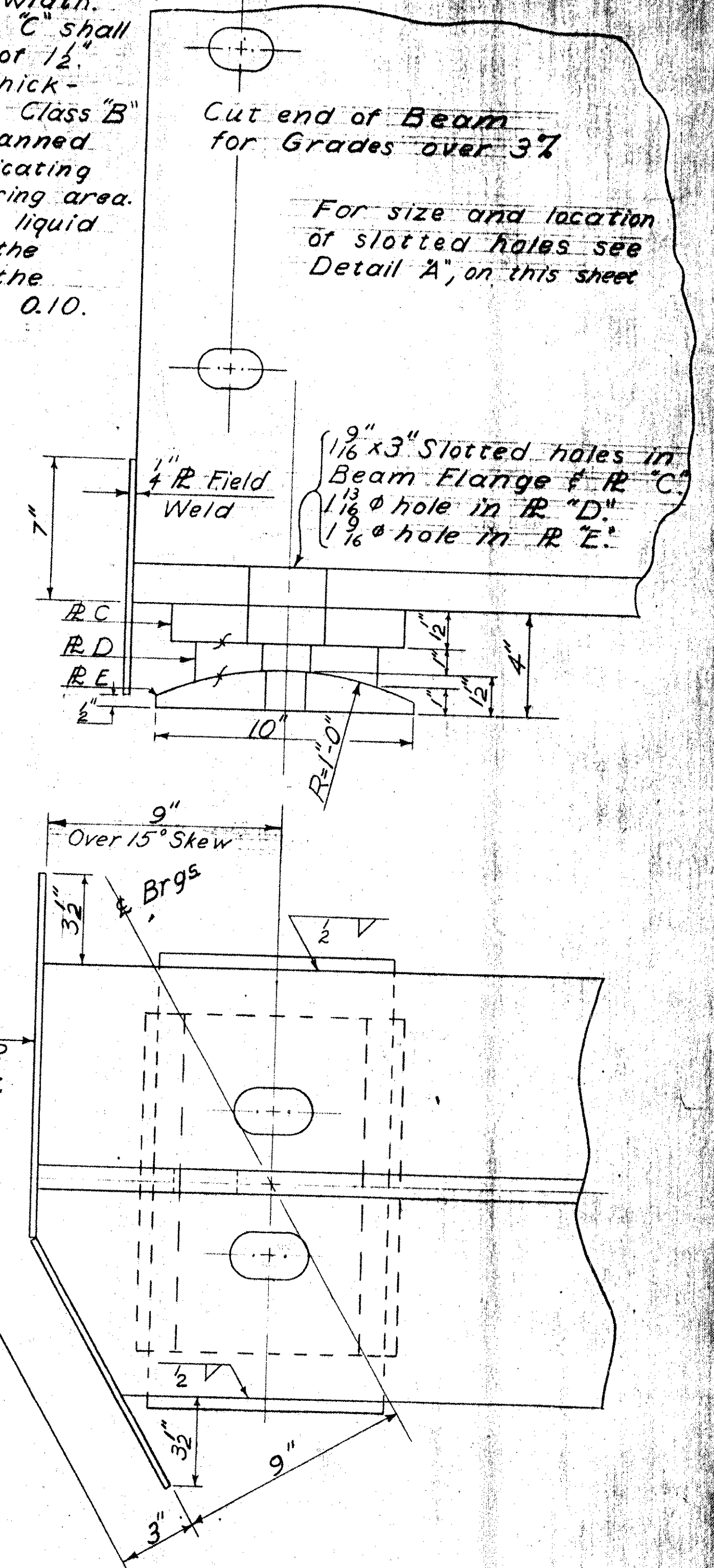
Plate "C" - 9x1/2x1" longer than the beam flange width. When the bridge is on a grade exceeding 5%, plate "C" shall be beveled to fit the grade with a mean thickness of 1".  
Plate "D" - 7x1" (outer edge thickness 1/2", center thickness 1") x 1-1/2". To be Cast Bronze - ASTM-B 22-40 T, Class "B" unless otherwise specified. This plate shall have trepanned recesses filled with a lubricating compound. The lubricating area shall comprise not less than 25% of the total bearing area. The manufacturer shall supply additional lubricant in liquid form with which the Contractor shall thoroughly coat the bearing surfaces that contact the lubricated portion of the bronze plate. The coefficient of friction shall not exceed 0.10.  
Plate "E" - 10x1/2x1-1/2". Finish as indicated.



Approx. Wgt. = 150 lbs.

Back of Abut.

EXPANSION END BEARING DEVICE  
FOR SPANS OVER 69'



Cut end of Beam  
for Grades over 3%

For size and location  
of slotted holes see  
Detail "A", on this sheet

9x1/2x3" Slotted holes in  
Beam Flange & R "C"  
1 1/8" hole in R "D"  
1/8" hole in R "E"

1/2" R - See Detail "A"  
of SCB-D9-62. R  
required @ Abut.  
ends only

REVISIONS & CORRECTIONS  
Revised weight of Exp. Brg. Device to  
150 lbs. 6/21/63

Drawn By: *[Signature]* Date: Dec. 11962  
Traced By: *[Signature]* Date: Dec. 11962  
Checked By: *[Signature]* Date: Dec. 11962  
Recommended For Approval: *[Signature]* 12/1/62  
Date: *[Signature]*  
Recommended For Approval: *[Signature]* 11/16/63  
Date: *[Signature]*  
Approved By: *[Signature]* 11/16/63  
Date: *[Signature]*

DETAILS OF W BEAM BRIDGES  
BEARING DEVICES

VERMONT  
DEPARTMENT OF HIGHWAYS  
STRUCTURE STANDARDS

SCB-D8-62

THIS SHEET FOR REFERENCE ONLY  
HARTLAND IM 091-1(36)  
1-91 BRIDGE 38  
SHEET 85 OF 85