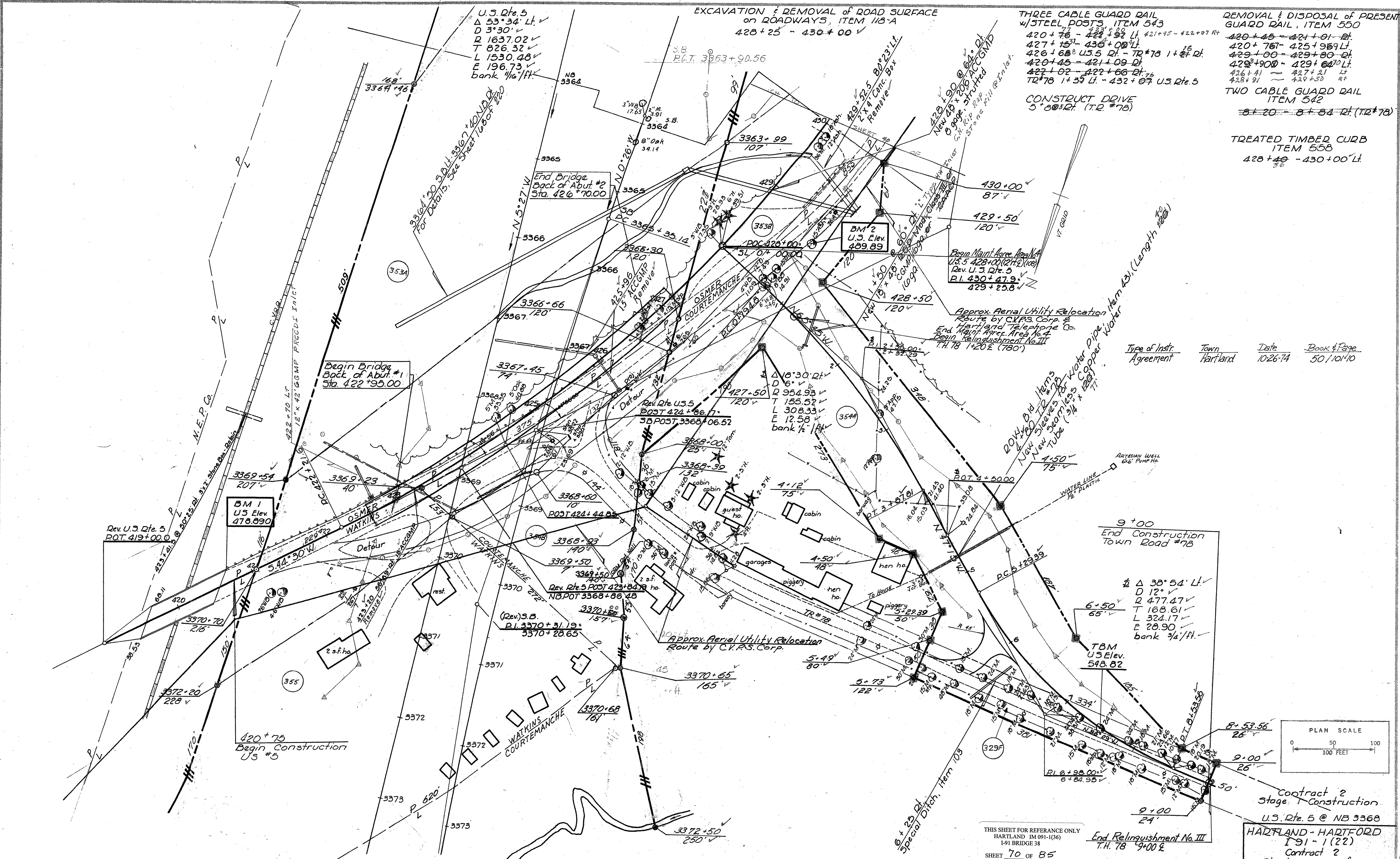


DATE: 1/26/74  
 BY: V. J. Martin  
 SURVEYED: [ ]  
 ALIGNED: [ ]  
 CHECKED: [ ]  
 NO. [ ]  
 TRACED: [ ]  
 WIT: [ ]



U.S. Dte. 5  
 $\Delta$  53° 34' Lt.  
 D 3° 30'  
 T 1637.02  
 L 1530.48  
 E 196.73  
 bank 1/16'/ft.

EXCAVATION & REMOVAL OF ROAD SURFACE  
 ON ROADWAYS, ITEM 113-A  
 428+25 - 430+00

THREE CABLE GUARD RAIL  
 w/STEEL POSTS, ITEM 543  
 420+76 - 422+92 Lt.  
 427+15 - 436+00 Lt.  
 426+68 U.S. Dte. - TR#78 1+27 Rt.  
 420+45 - 421+09 Lt.  
 422+02 - 422+66 Rt.  
 TR#78 1+39 Lt. - 432+07 U.S. Dte. 5

REMOVAL & DISPOSAL OF PRESENT  
 GUARD RAIL, ITEM 550  
 420+45 - 421+01 Lt.  
 420+76 - 425+96 Lt.  
 429+00 - 429+80 Lt.  
 429+90 - 429+60 Lt.  
 426+41 - 427+21 Lt.  
 428+91 - 429+53 Rt.

CONSTRUCT DRIVE  
 5' @ 12' (T.R. #78)

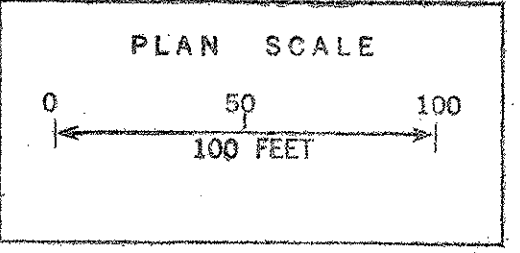
TWO CABLE GUARD RAIL  
 ITEM 542  
 8+20 - 8+84 Rt. (TR#78)

TREATED TIMBER CURB  
 ITEM 558  
 428+48 - 430+00 Lt.

Type of Instr. Agreement	Town	Date	Book & Page
	Hartland	10/26/74	50/10/10

9+00  
 End Construction  
 Town Road #78

$\Delta$  38° 54' Lt.  
 D 12°  
 R 477.47  
 T 168.61  
 L 324.17  
 E 28.90  
 bank 3/4'/ft.



THIS SHEET FOR REFERENCE ONLY  
 HARTLAND IM 091-1(36)  
 1-91 BRIDGE 38  
 SHEET 70 OF 85

End Relinquishment No. III  
 T.H. 78 9+00 E

Contract 2  
 Stage Construction  
 U.S. Dte. 5 @ NB 3368  
 HARTLAND - HARTFORD  
 I-91-1(22)  
 Contract 2  
 Sheet 39 of 220