

DATE: 11/25/91
 BY: [Signature]
 CHECKED: [Signature]
 NO. 1
 PLANNING: [Signature]
 SURVEYING: [Signature]
 ENGINEERING: [Signature]
 DRAWING: [Signature]

PROPERTY LINE FENCE
 W/ STEEL POSTS, ITEM 563-D
 3351+00 - 3366+00 S.B. LT.
 3351+00 - 3366+00 NB RT.

BITUMINOUS GUTTER, USING
 ITEM 554 LT.
 3363+50 - 3364+00 S.B. RT.
 3364+50 - 3364+60 Med.

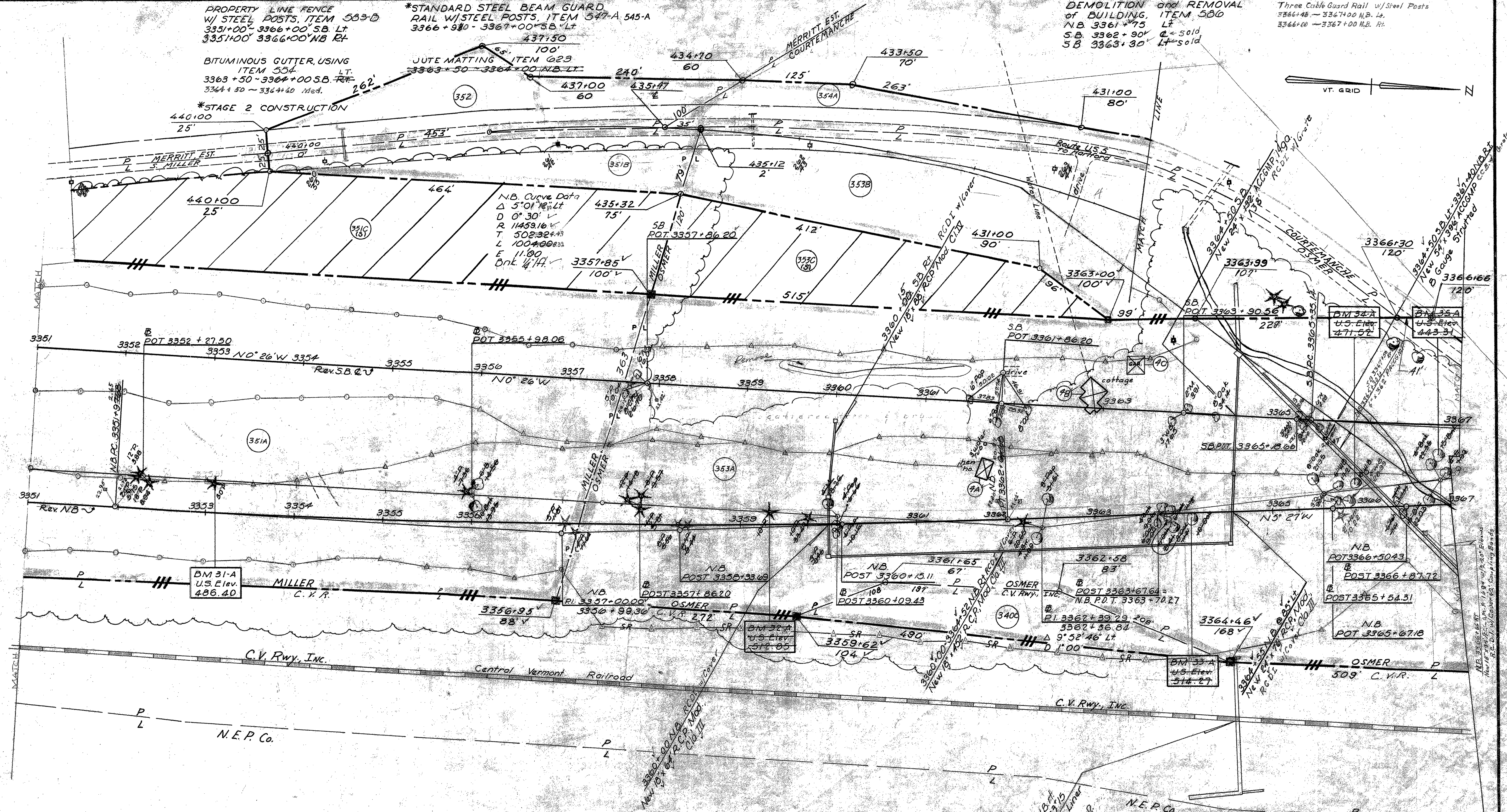
*STAGE 2 CONSTRUCTION
 440+00
 25'

*STANDARD STEEL BEAM GUARD
 RAIL W/ STEEL POSTS, ITEM 547-A 545-A
 3366+98.0 - 3367+00 S.B. LT.

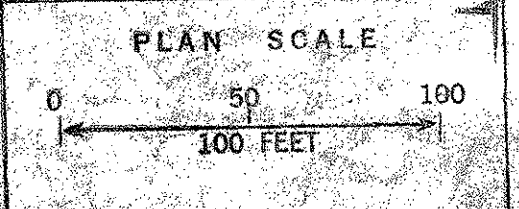
JUTE MATTING ITEM 623
 3363+50 - 3364+00 NB LT.

DEMOLITION and REMOVAL
 of BUILDING, ITEM 500
 NB 3361+75 LT
 S.B. 3362+90 LT
 S.B. 3363+30 LT

Three Cable Guard Rail w/ Steel Posts
 3366+46 - 3367+00 N.B. Lt.
 3366+00 - 3367+00 N.B. Rt.



N.B. Curve Data
 Δ 5° 01' 12" Lt
 D 0° 30' V
 R 11459.16
 T 502.32
 L 100+00
 E 11.90
 Bk. 1/4 H.



CONTROL OF ACCESS IS COMPLETE
 ON THIS SHEET

THIS SHEET FOR REFERENCE ONLY
 HARTLAND 01 091-106
 I-91 BRIDGE 38
 SHEET 67 OF 85
 Contract 2
 Stage 2 Construction
 HARTLAND - HARTFORD
 I-91-102(31)
 Sheet 28 of 220

Sheet 67 of 242