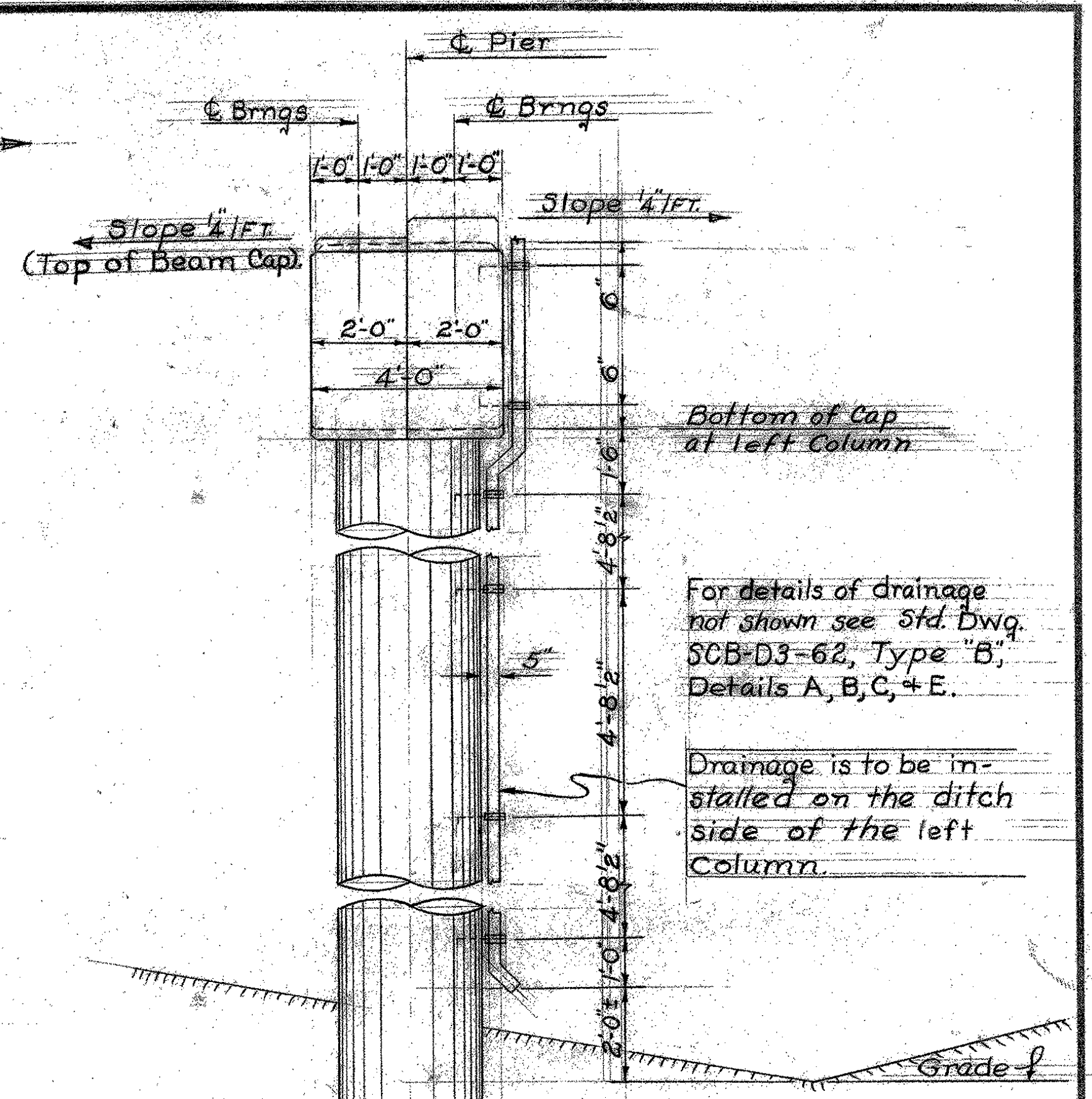


PLAN



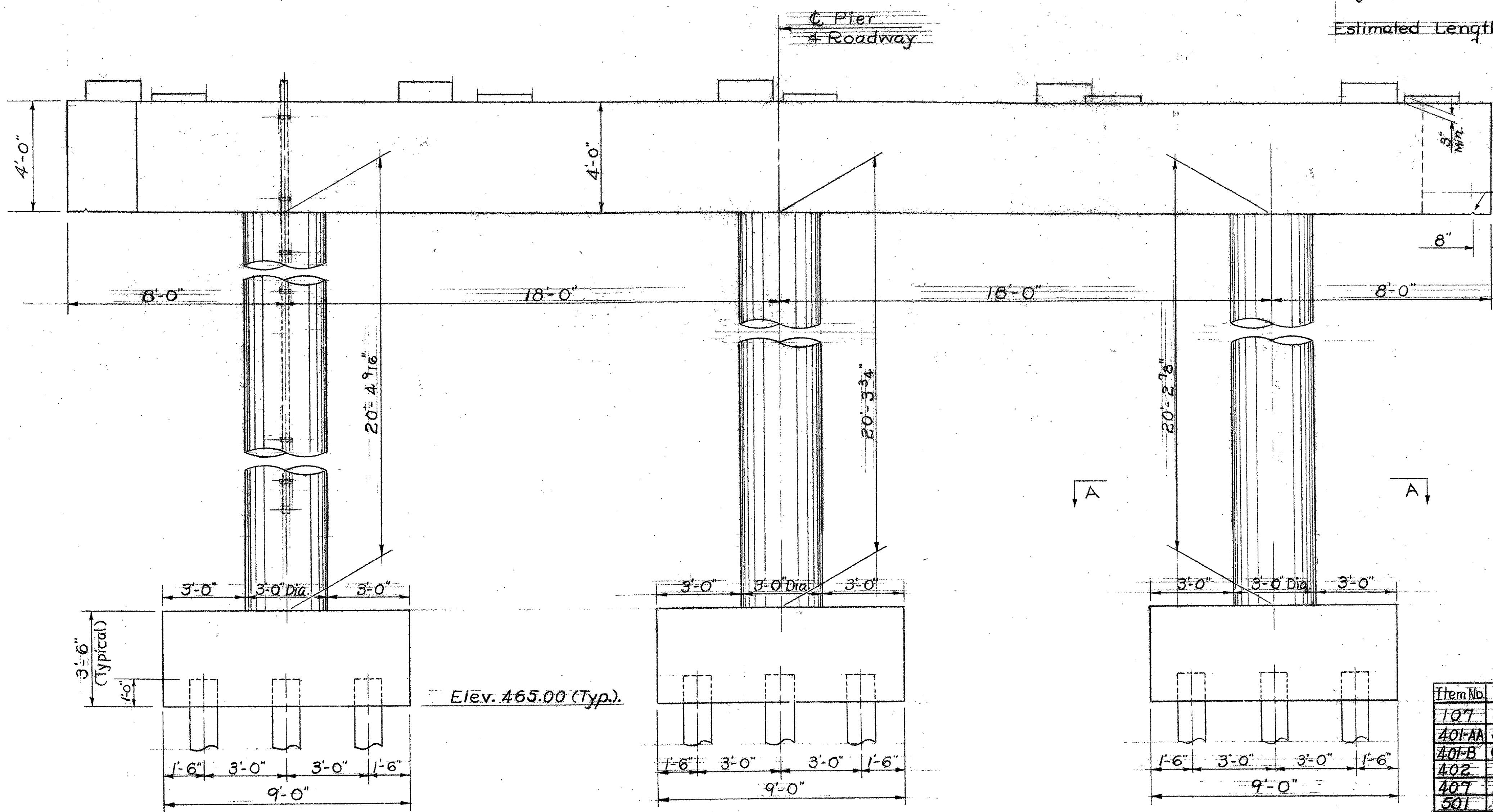
Bottom of Cap at left Column

For details of drainage not shown see Std. Dwg. SCB-D3-62, Type "B", Details A, B, C, + E.

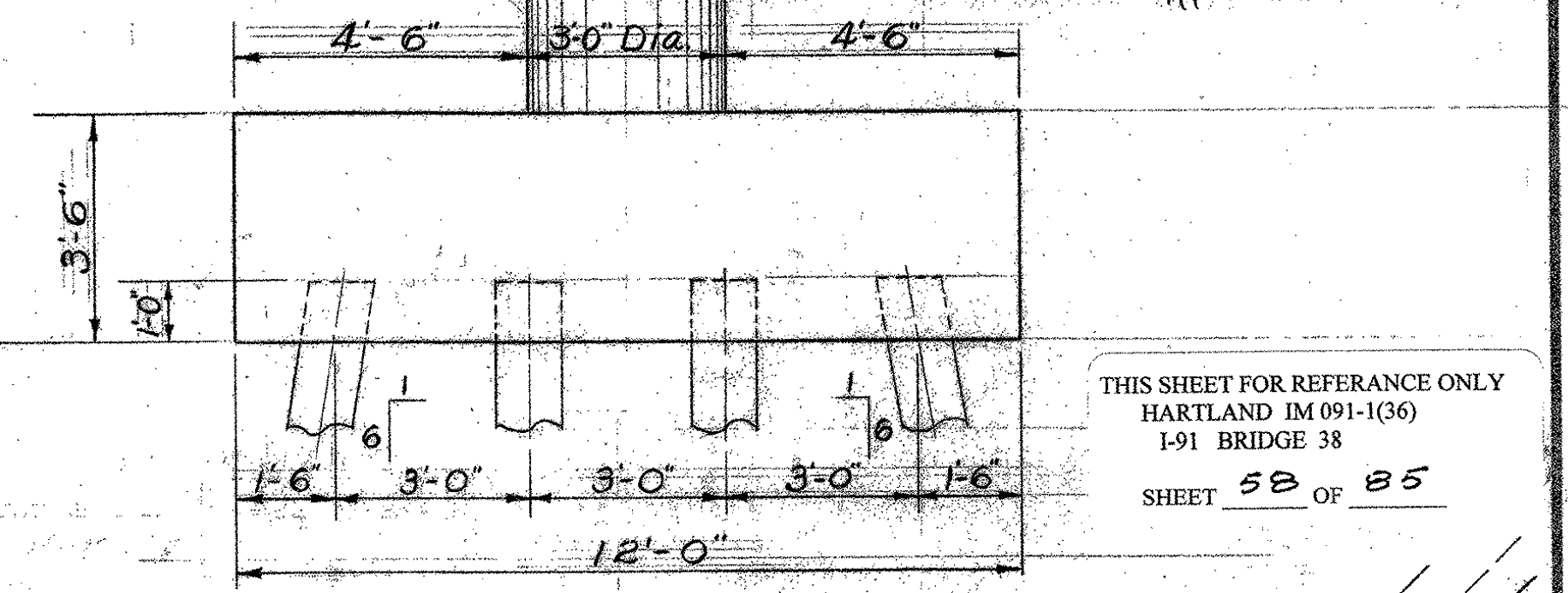
Drainage is to be installed on the ditch side of the left column.

For Notes see Pier No. 1  
Layout Details Sheet BR-III.

Estimated Length of Piles 20'

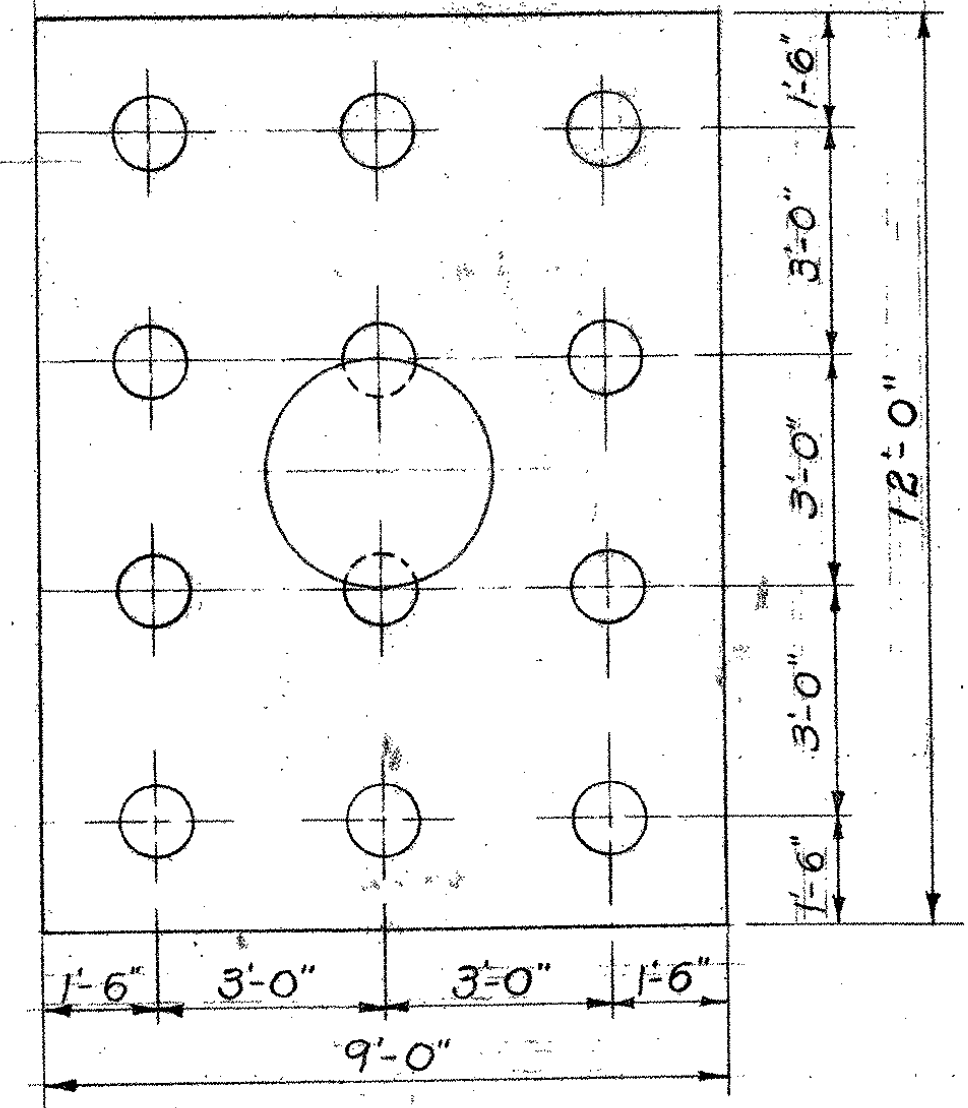


ELEVATION



END ELEVATION

THIS SHEET FOR REFERENCE ONLY  
HARTLAND IM 091-1(36)  
1-91 BRIDGE 38  
SHEET 58 OF 85



SECTION A-A

Estimated Quantities Pier No. 2

Item No.	Item	Unit	Total	Final
107	Structure Excavation	C.Y.	86	77
401-AA	Concrete Class AA (Mod.)	CY.	4.7	
401-B	Concrete Class B (Mod.)	CY.	42.1	42
402	Reinforcing Steel	LB.	14,340	14,340
407	Asphaltic-Asbestos Coating	S.Y.	24	23
501	Furnishing Equip. for Driving Piles	(See Est. Quantity Sheet)		
502B	Treated Timber Piling	L.F.	420	267
440	Water Repellent	Gal.	84	7 1/2

Stationing	Elev.	Elev.
	493.15	493.63
	493.11	493.59
	493.06	493.55
	493.04	493.50
492.97	493.46	

Bridge Seat Elevations  
No Scale

STATE OF VERMONT  
DEPARTMENT OF HIGHWAYS

TOWN OF HARTLAND-HARTFORD  
ROUTE NO. 191 LOG STA. \_\_\_\_\_  
Pier No. 2 Layout Details  
U.S. 5 Over I 91  
SCALE 3/8" = 1'-0"  
SURVEYED BY \_\_\_\_\_  
DRAWN BY J.J.C. CHECKED BY A.E.R.  
PROJECT NO. 191-(22) Cont. 2  
SHEET 55 OF 220