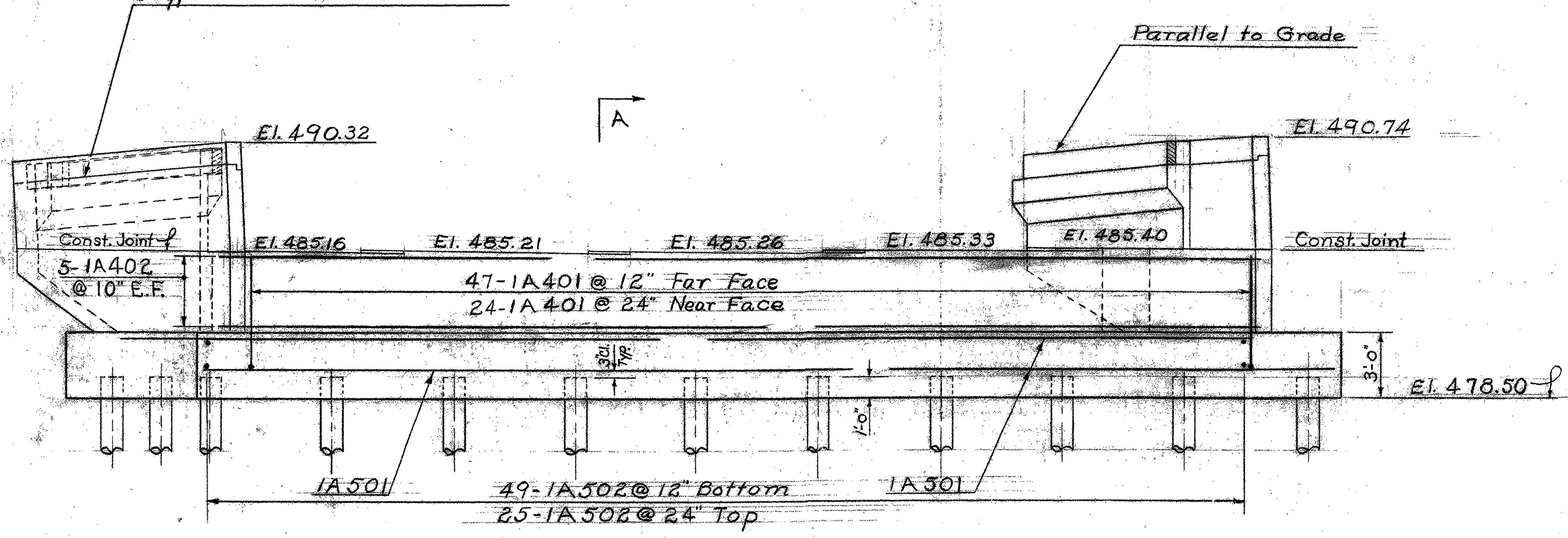


Note:
Do not construct above this joint until structural steel is in place and final grade is determined. (Typical both sides).



For Notes see Details Abut. No. 2 Wing Walls, Sheet BR-110.
Estimated Length of Piles 45'

E.F. Each Face
F.F. Far Face
N.F. Near Face
L.W. Left Wing
R.W. Right Wing

Estimated Quantities Abut. No. 1

ITEM NO.	ITEM	UNIT	NET	TOTAL	FINAL
	CHAN. EXCAV. OF EARTH	C.Y.			
	CHAN. EXCAV. OF ROCK	C.Y.			
	UNCLASS. CHAN. EXCAV.	C.Y.			
107	STRUCT. EXCAV.	C.Y.		46	132
	CONC. CLASS AA (MOD.)	C.Y.	1		
40-B	CONC. CLASS B (MOD.)	C.Y.		66	67
402	REINF. STEEL	LBS.		3780	3715
407	ASPHALTIC-ASB. COATING	S.Y.		51	5
502B	TREATED TIMBER PILING	L.F.		1035	456
	UNTREATED TIMBER PILING	L.F.			
440	Water Repellent	Gal.		42	8
	UNTREATED TIMBER PILING	L.F.			
204	Sub-base of Crushed Rock (Modified Under Structure)	C.Y.		90	68
222	Gravel Backfill	C.Y.		281	28
501	Furnishing Equip. for Driving Piles	L.S.			
556-C	Granite Bridge Curb (Mod.)	L.F.		231	23

Stage I Construction

STATE OF VERMONT
DEPARTMENT OF HIGHWAYS
TOWN OF HARTLAND-HARTFORD
ROUTE No. 191 LOG STA.
Details of Abutment No. 1
(Fixed End)
SCALE As Noted
SURVEYED BY
DRAWN BY J.J.C. CHECKED BY A.E.R.
PROJECT No. 191-1(22) Cont #2
SHEET 50 OF 220