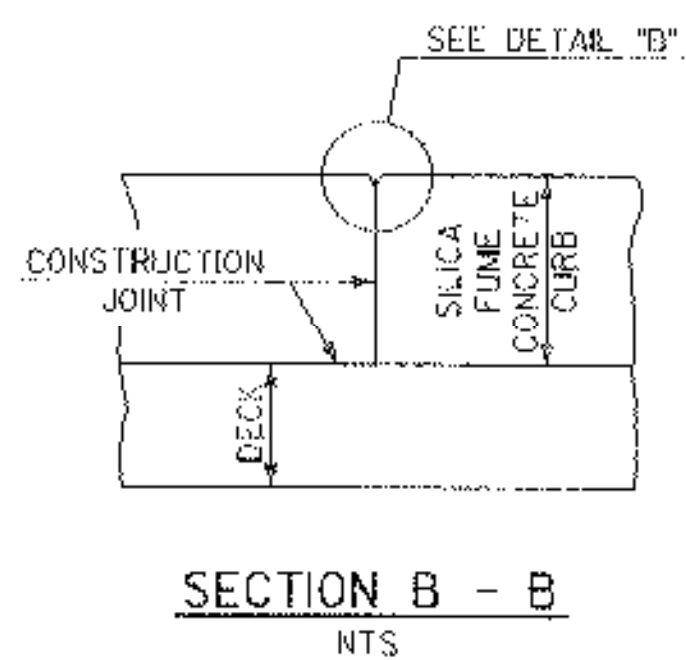
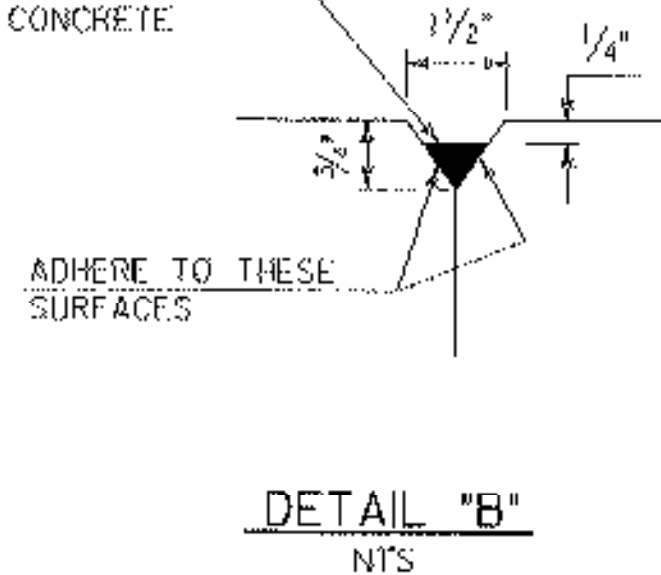


TYPICAL SECTION THROUGH
CONCRETE CURB CONSTRUCTION JOINT
NTS

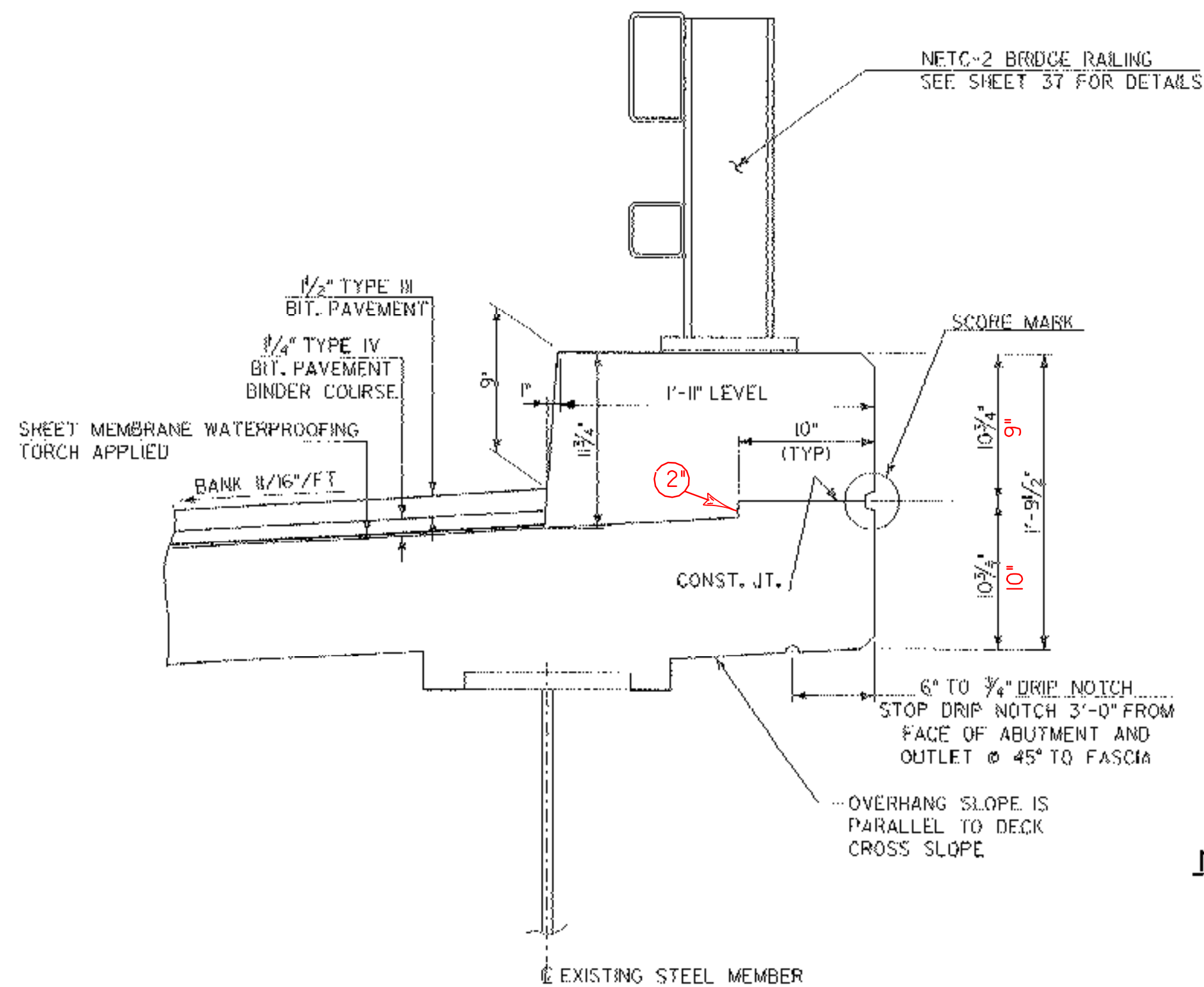


SECTION B - B
NTS

POLYURETHANE JOINT SEALER
PER SUBSECTION 524.06C
COLOR TO MATCH CONCRETE.
COST TO BE INCLUDED IN THE
UNIT PRICE BID FOR CONCRETE.



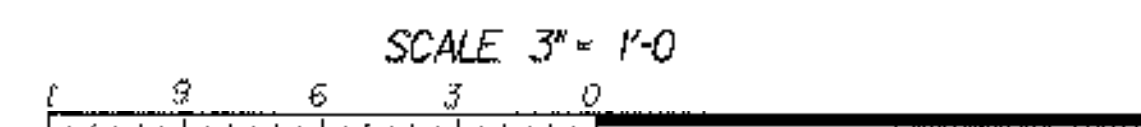
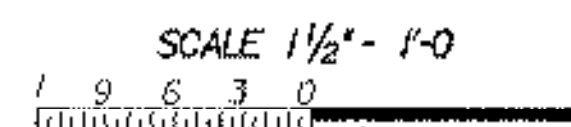
DETAIL "B"
NTS



TYPICAL CURB SECTION
SCALE: 1 1/2" = 1'-0"

NOTES:

1. CONSTRUCTION JOINTS THROUGH CONCRETE CURBS SHALL BE SPACED MAXIMUM 15'-0" CENTER TO CENTER AND SHALL BE 1'-6" MINIMUM FROM THE CENTER OF THE NEAREST BRIDGE RAIL POST. CONCRETE SHALL BE PLACED IN ALTERNATING SECTIONS WITH A MINIMUM OF 48 HOURS DELAY BETWEEN ADJACENT POURS.
2. LONGITUDINAL REINFORCING SHALL PASS THROUGH CONCRETE CURB CONSTRUCTION JOINTS EXCEPT AT PIERS.
3. POLYURETHANE MEMBRANE AND BLAST CLEANING SHALL BE INCLUDED IN THE UNIT PRICE BID FOR SHEET MEMBRANE TORCH APPLIED



STATE OF VERMONT
AGENCY OF TRANSPORTATION

Town Of	HARTLAND	Bridge No.	38
Highway No.	1-91	Log Sta.	
CURB & CONSTRUCTION JOINT DETAILS		Surv. Sta.	
Designed By	E. JOHNSTON	Drawn By	N. HERRERA
Checked By	E. JOHNSTON	Date	DEC. 2000
		Bridge Design Supervisor	E. JOHNSTON
		Date	FEB. 2002
PROJECT	HARTLAND	PROJECT NO.	IM 091-1(36)
Drawing Name	zo272cj.dgn	Bridge Sheet No.	
		Sheet	39 of 85