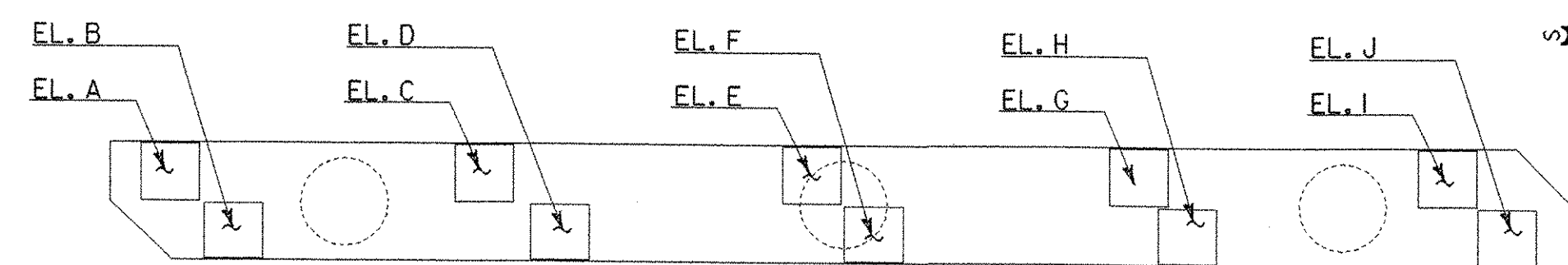
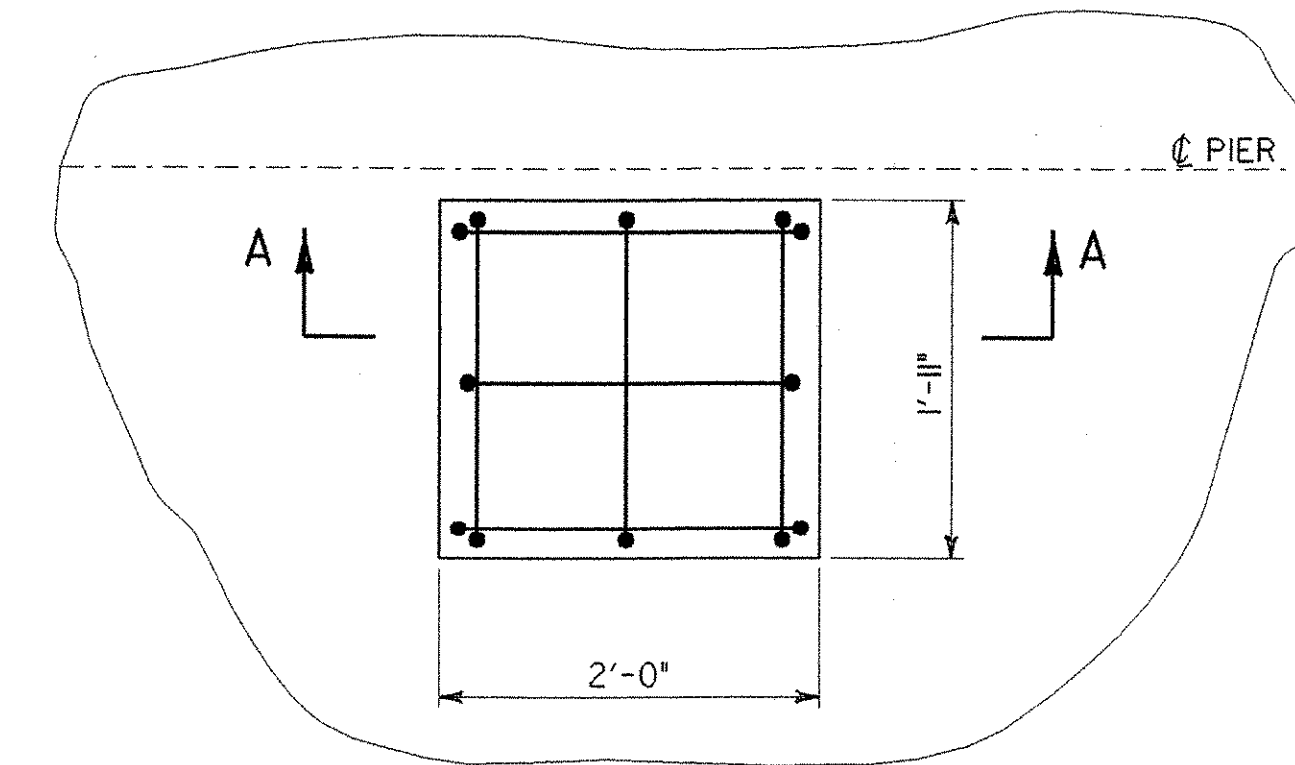


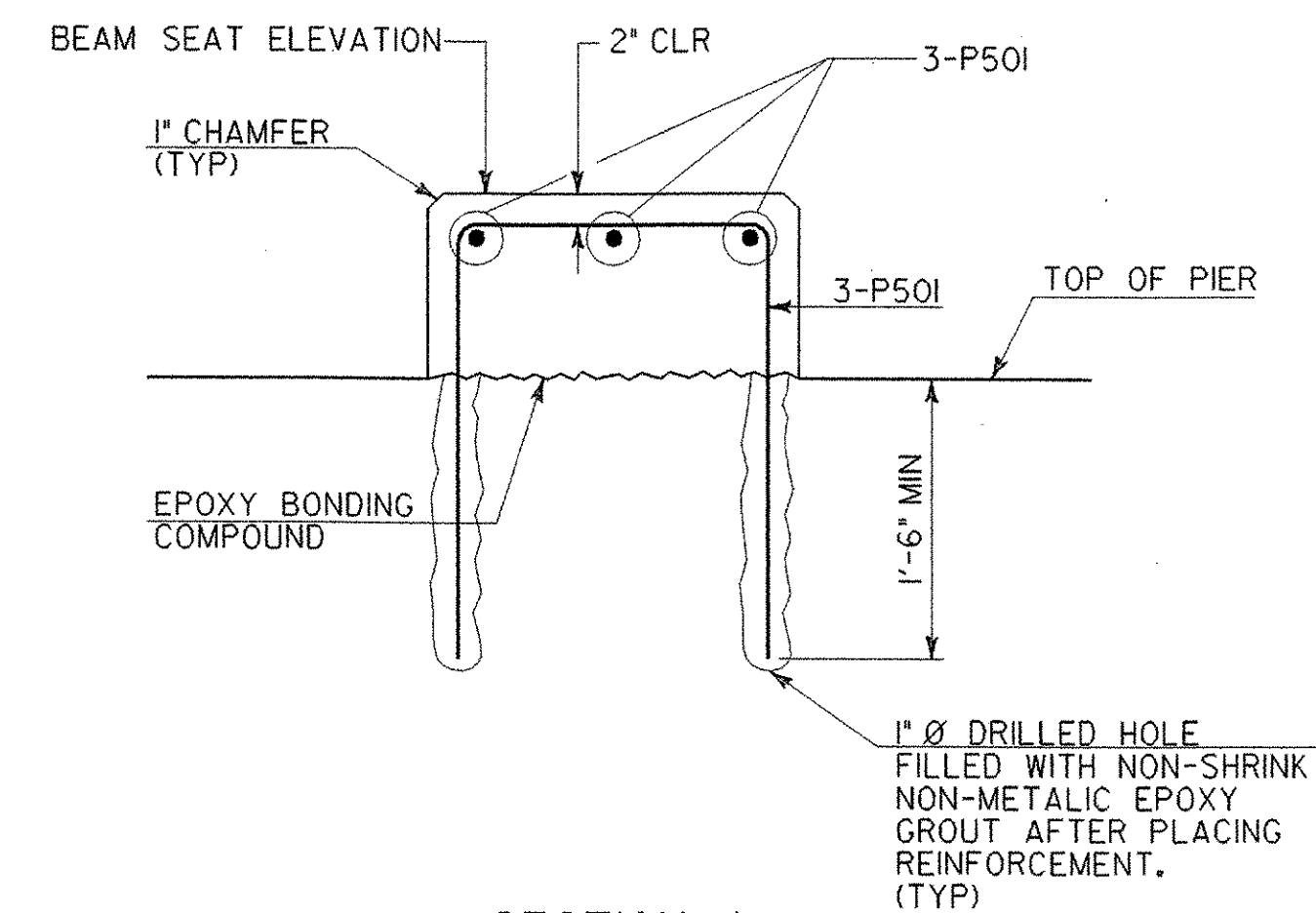
ELEVATION



PIER CAP PLAN



PLAN VIEW REBUILT PEDESTAL
SCALE: 1"=1'-0"



SECTION A
SCALE: 1"=1'-0"

NOTES:

1. REBUILD PEDESTAL AS NOTED ON SHEETS 32 THROUGH 35.
2. PROVIDE A SHIM IN ACCORDANCE WITH THE DETAILS GIVEN ON SHEET 21 WHEN THE PIER BEAM SEAT ELEVATION IS HIGHER THAN THE EXISTING PIER BEAM SEAT ELEVATION AND THE PEDESTAL IS NOT BEING REBUILT PER NOTE 1.
3. THE REMOVAL OF EXISTING PIER PEDESTALS WILL BE PAID FOR UNDER ITEM 529.25 "REMOVAL OF CONCRETE OR MASONRY". THE NEW PEDESTAL CONCRETE WILL BE PAID FOR UNDER ITEM 501.33 "CONCRETE, HIGH PERFORMANCE CLASS A".
4. THE PEDESTALS TO BE REMOVED AND REPLACED ARE NOTED ON SHEETS 32 THROUGH 35 IN THE "PIER CAP PLAN - TOP" VIEW AS "NOTE 2". ANY PEDESTAL IN THESE VIEWS WITH THE WORDS "NOTE 2" POINTING TO A PEDESTAL MEANS PLAN ON REMOVING AND REPLACING THIS PEDESTAL.

PIER BEAM SEAT ELEVATIONS (NOTE 2)										
PIER	A	B	C	D	E	F	G	H	I	J
1	488.36	488.35	488.29	488.28	488.23	488.21	488.16	488.15	488.09	488.08
2	493.09	492.78	493.06	492.74	493.02	492.70	492.98	492.66	492.94	492.62
3	495.68	495.65	495.67	495.64	495.66	495.62	495.64	495.61	495.63	495.58
4	499.56	499.45	499.61	499.49	499.66	499.54	499.70	499.57	499.73	499.61

SCALE 3/16" = 1'-0"
1 0 2 4 6 8

04-FEB-2003

r:\Struct\working\za272pr.dgn

STONE & WEBSTER, INC.

**STATE OF VERMONT
AGENCY OF TRANSPORTATION**

Town Of HARTLAND	Bridge No. 38
Highway No. 1-91	Log Sta.
PIER REPAIRS	
Designed By S. YONGHO	Drawn By N. HERRERA
Checked By S. YONGHO	Date DEC. 2000
Bridge Design Supervisor E. JOHNSTON	Date FEB. 2001
PROJECT HARTLAND	PROJECT NO. IM 091-1(36)
Drawing Name za272pr.dgn	Bridge Sheet No.
	Sheet 36 of 85