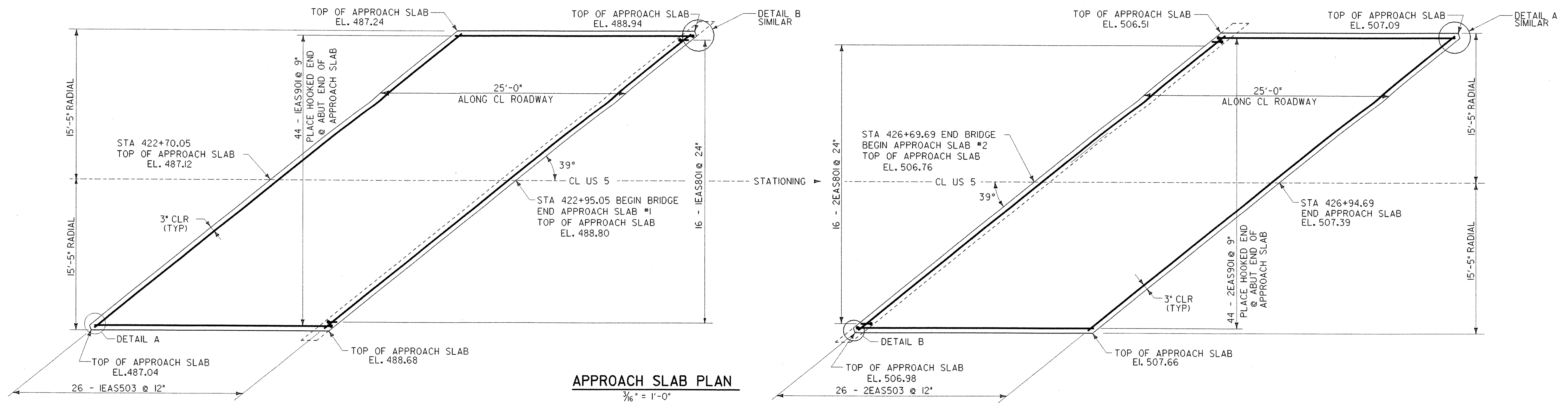


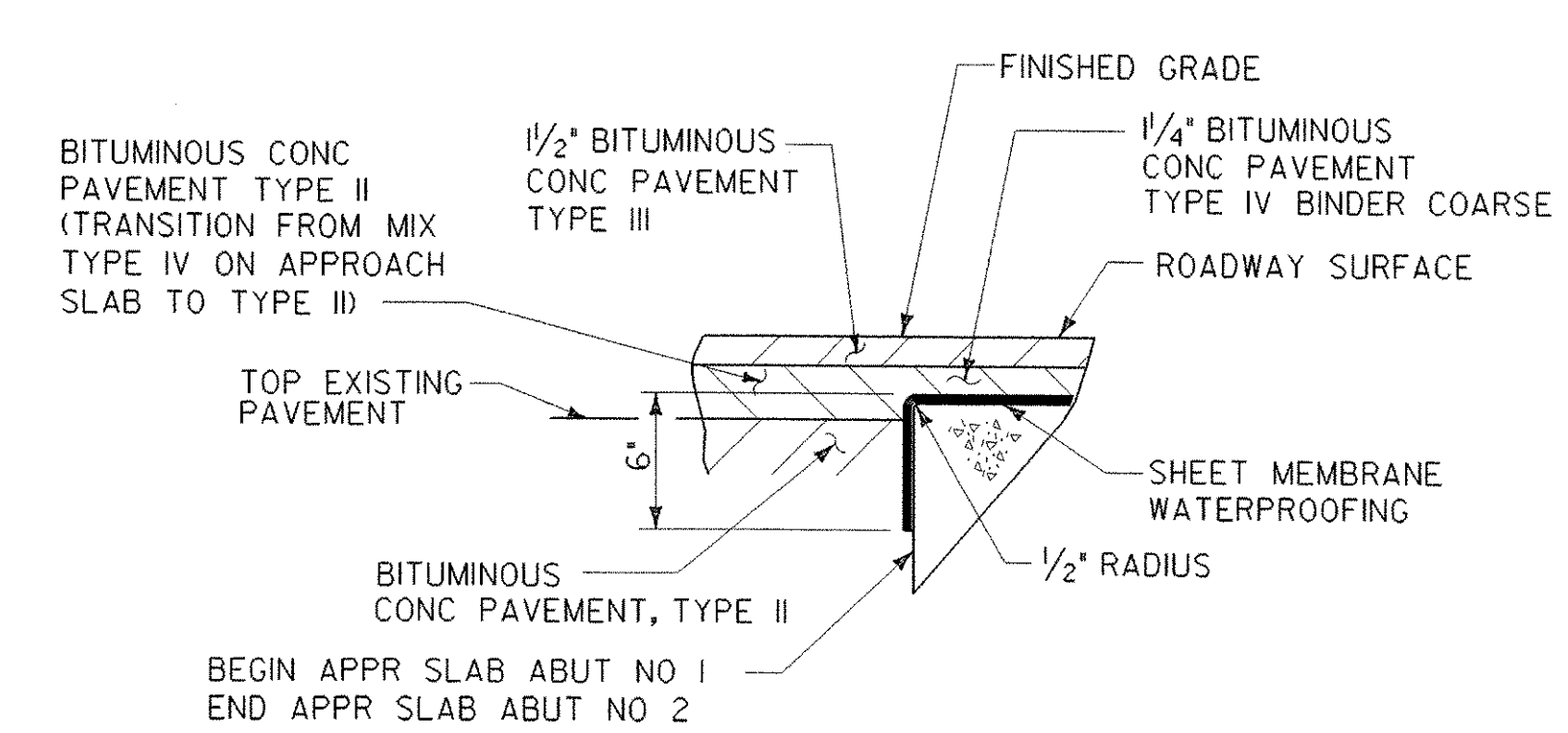
10-DEC-2002

v:\Struc\working\za272as.dgn

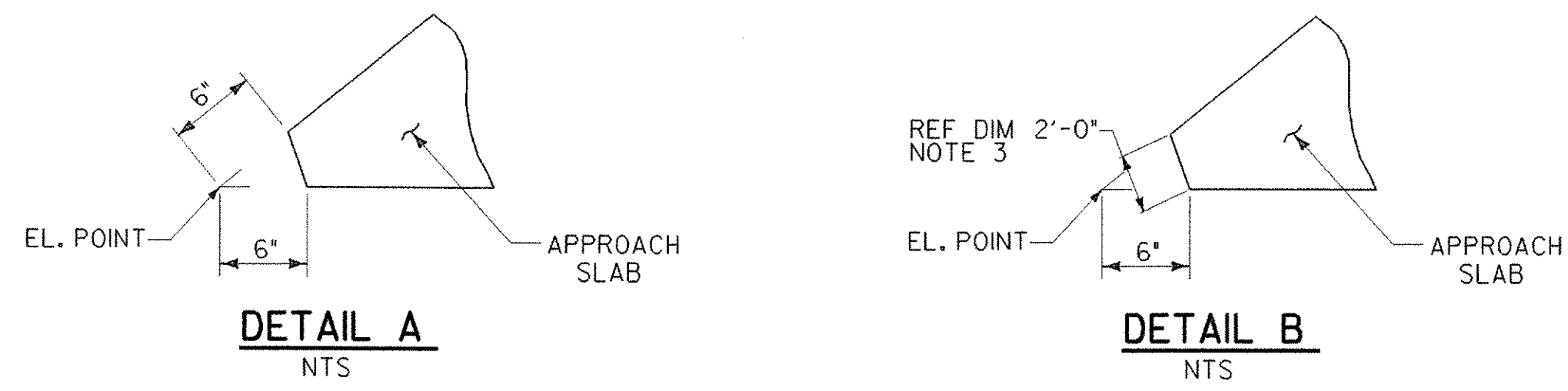


**APPROACH SLAB PLAN**  
3/16" = 1'-0"

- NOTES:**
- 3' CLEAR UNLESS OTHERWISE NOTED.
  - NOT USED
  - FILLET EXISTS IN CORNER OF BACK WALL. APPROACH SLAB TO BE POUR AGAINST BACK WALL. APPLY BOND BREAKER TO BACK WALL PRIOR TO POUR.

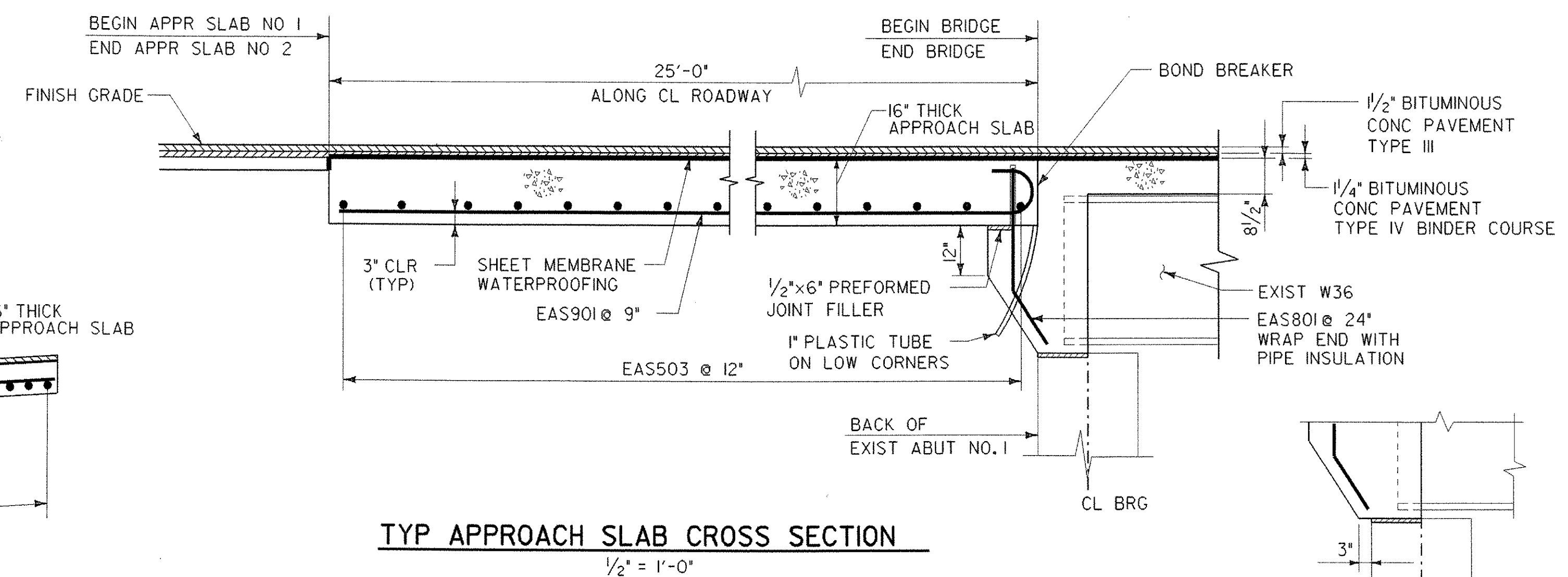


**DETAIL FOR SHEET MEMBRANE AT APPROACH SLAB END**  
NTS

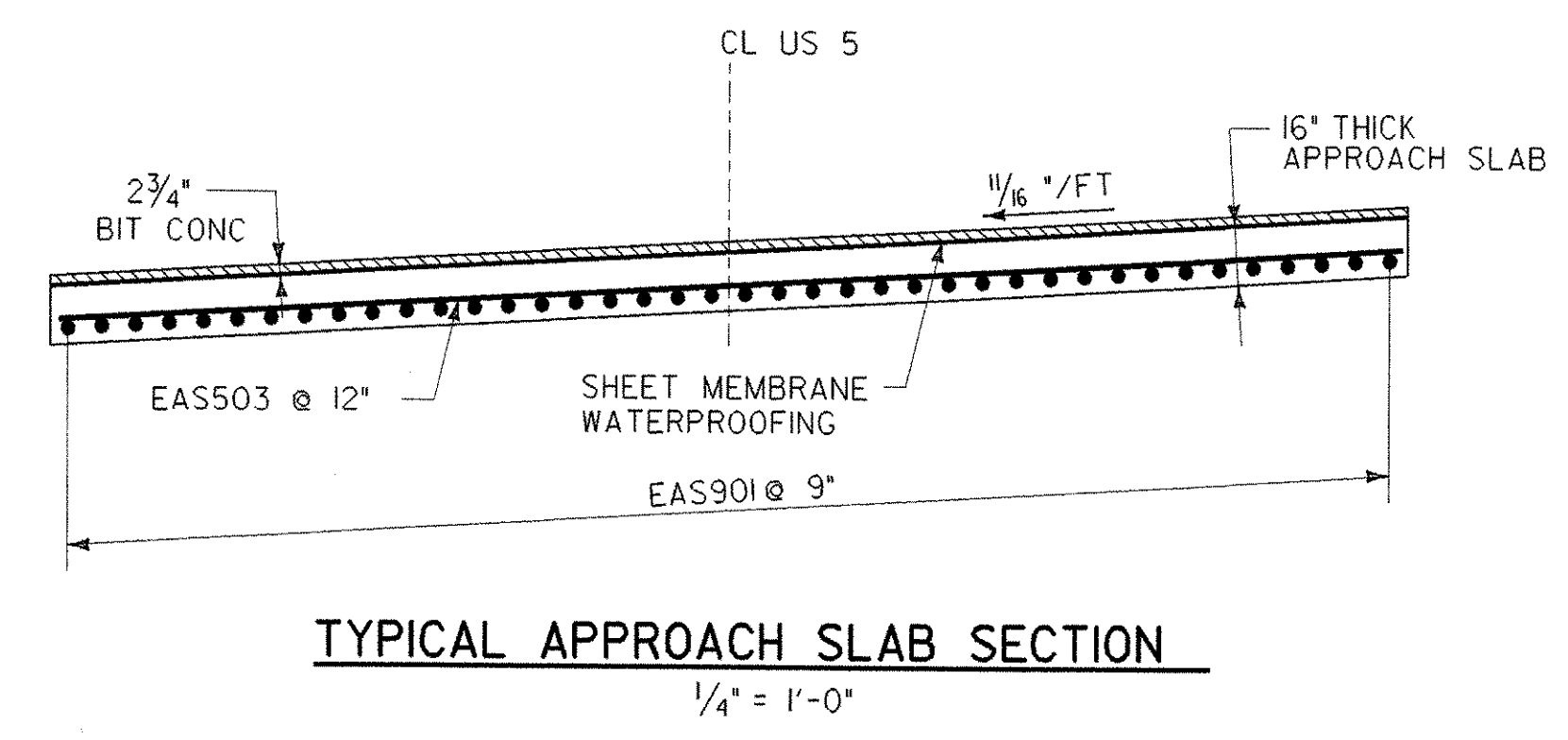


**DETAIL A**  
NTS

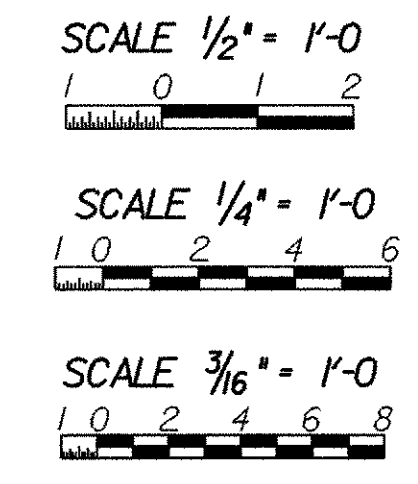
**DETAIL B**  
NTS



**TYP APPROACH SLAB CROSS SECTION**  
1/2" = 1'-0"



**TYPICAL APPROACH SLAB SECTION**  
1/4" = 1'-0"



<b>STATE OF VERMONT AGENCY OF TRANSPORTATION</b>	
Town Of HARTLAND	Bridge No. 38
Highway No. 1-91	Log Sta. Surv. Sta.
<b>APPROACH SLAB DETAILS</b>	
Designed By S. YONGHO	Drawn By J. HORAN
Checked By E. JOHNSTON Date DEC. 2000	Bridge Design Supervisor E. JOHNSTON Date FEB. 2001
PROJECT HARTLAND	PROJECT NO. IM 091-1(36)
Drawing Name za272as.dgn	
Bridge Sheet No.	Sheet 27 of 85

STONE & WEBSTER, INC.