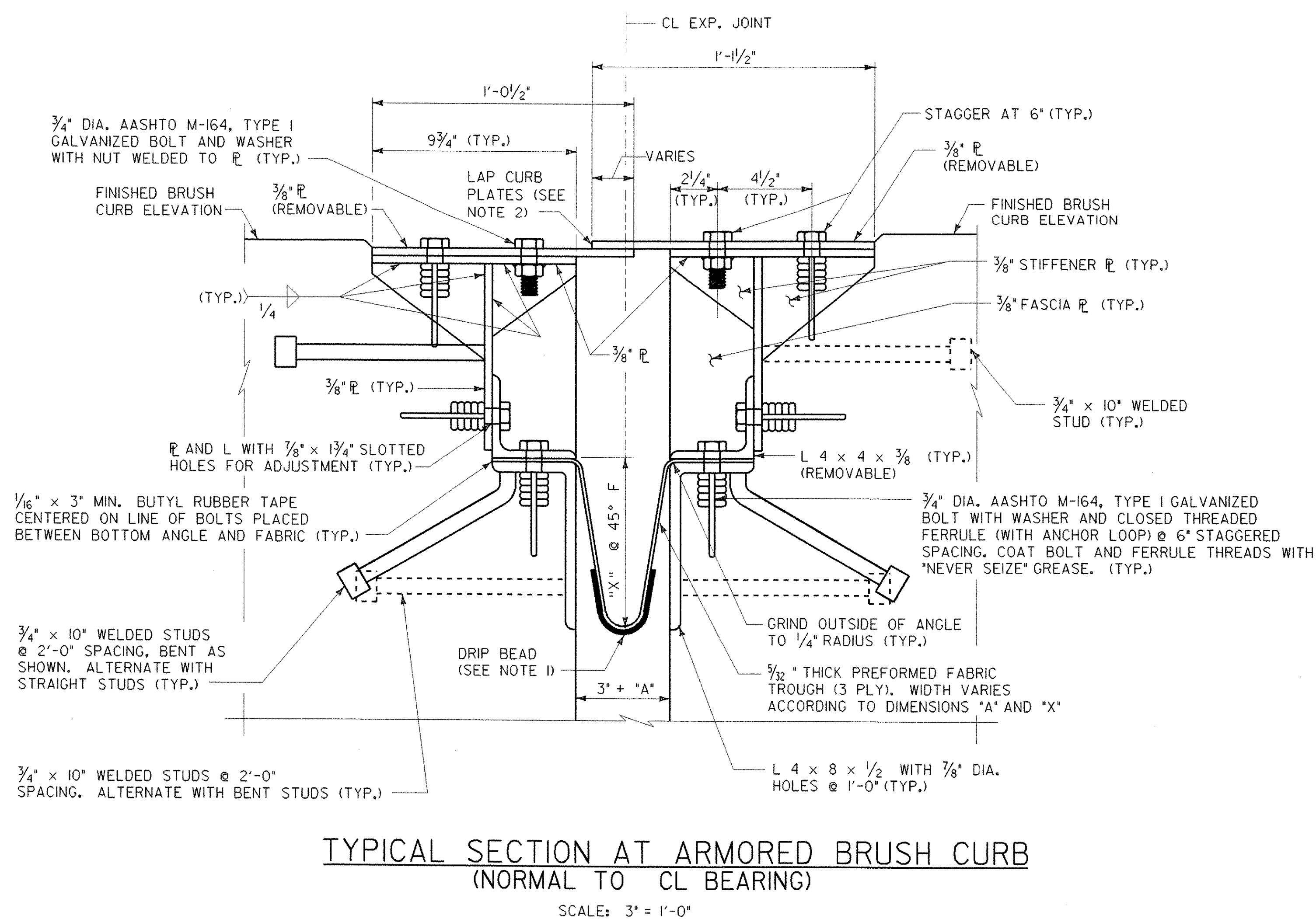
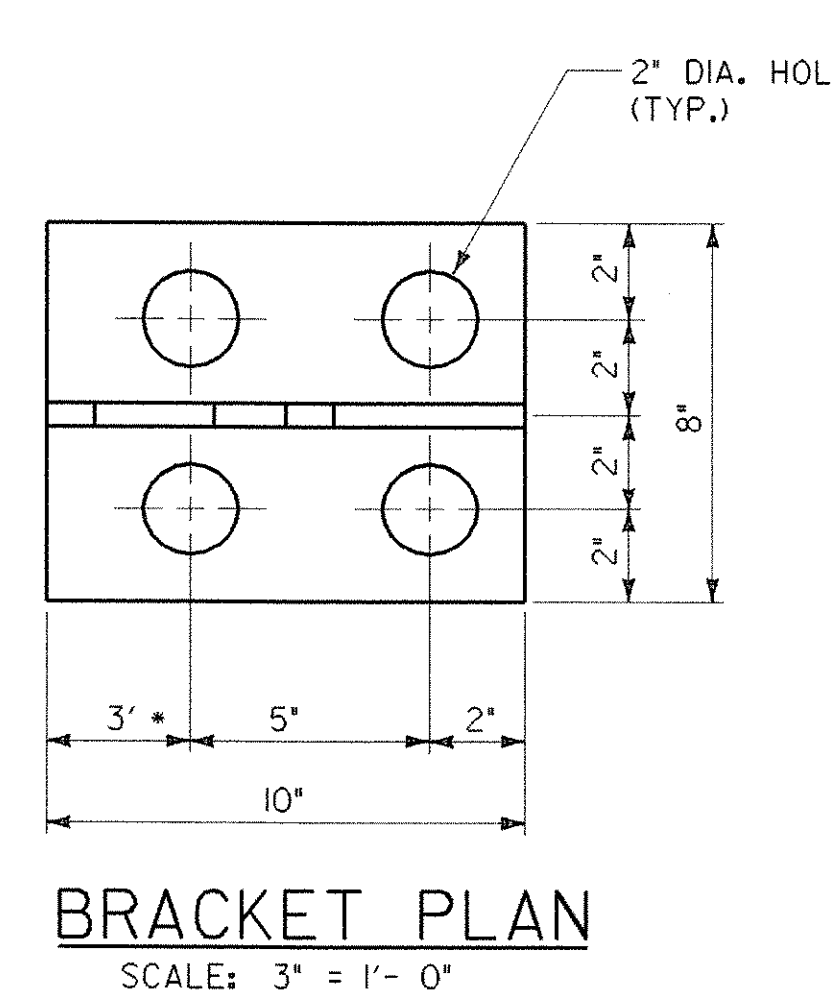


10-DEC-2002

v:\Struc\working\za272j+3.dgn



TYPICAL SECTION AT ARMORED BRUSH CURB
(NORMAL TO CL BEARING)
SCALE: 3" = 1'-0"



BRACKET PLAN
SCALE: 3" = 1'-0"

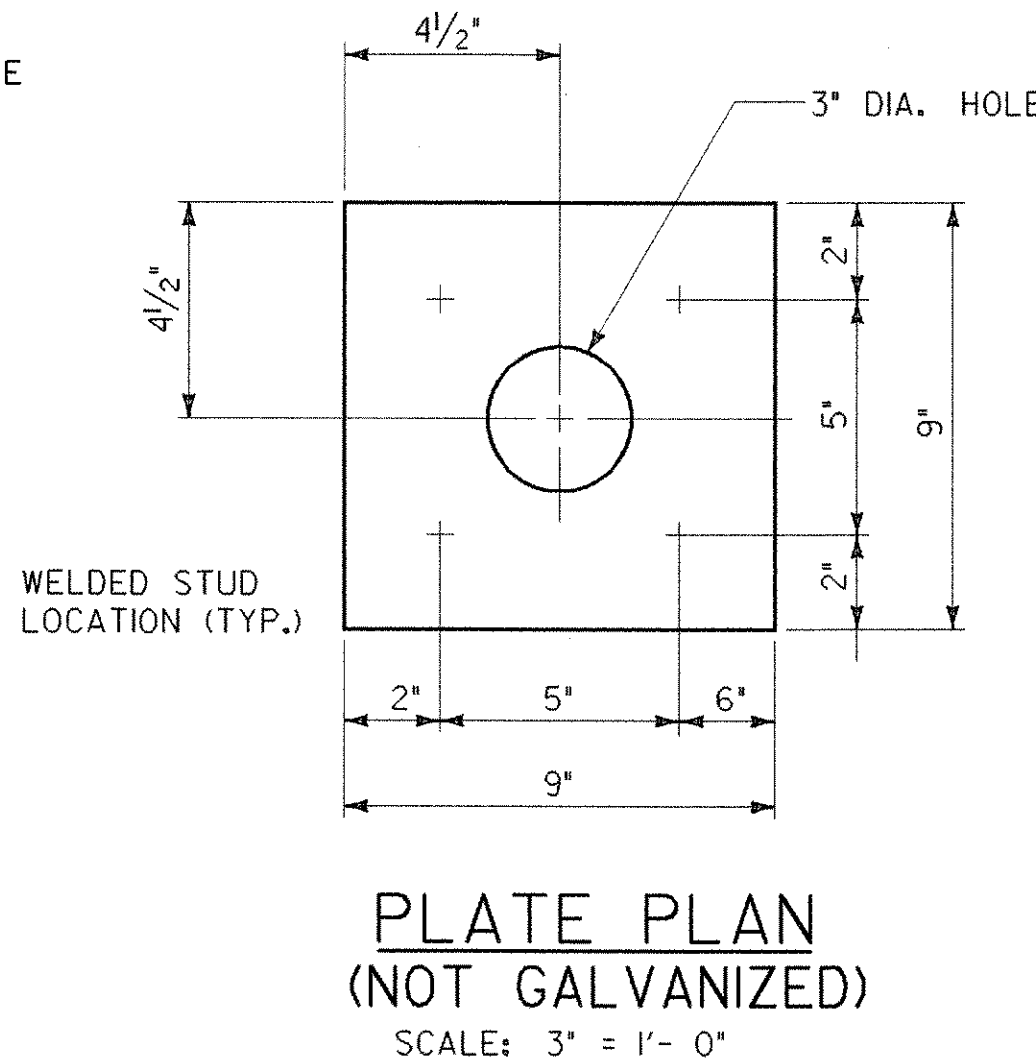
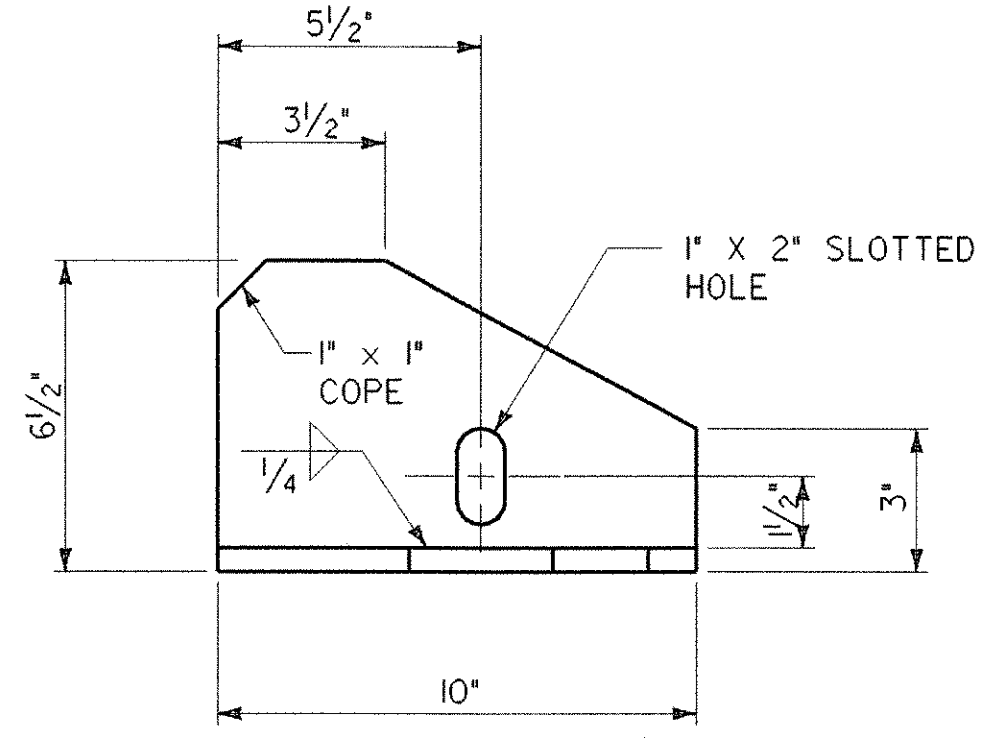
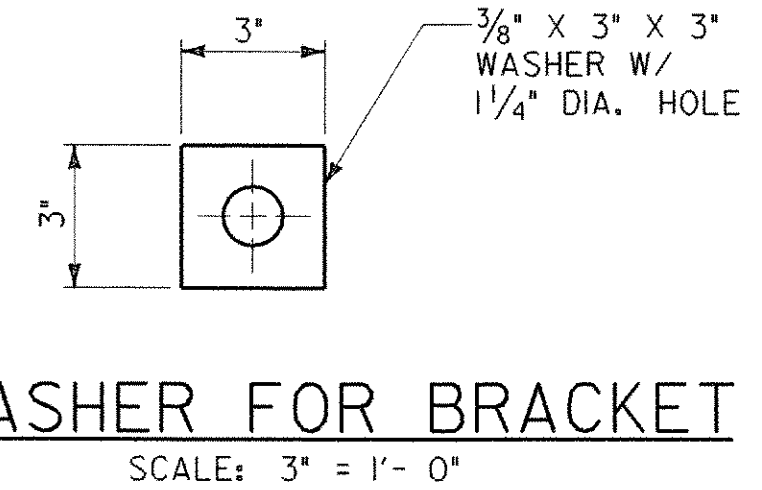


PLATE PLAN
(NOT GALVANIZED)
SCALE: 3" = 1'-0"

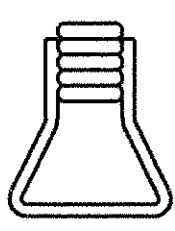
NOTE: ALL PLATES 1/2" THICK



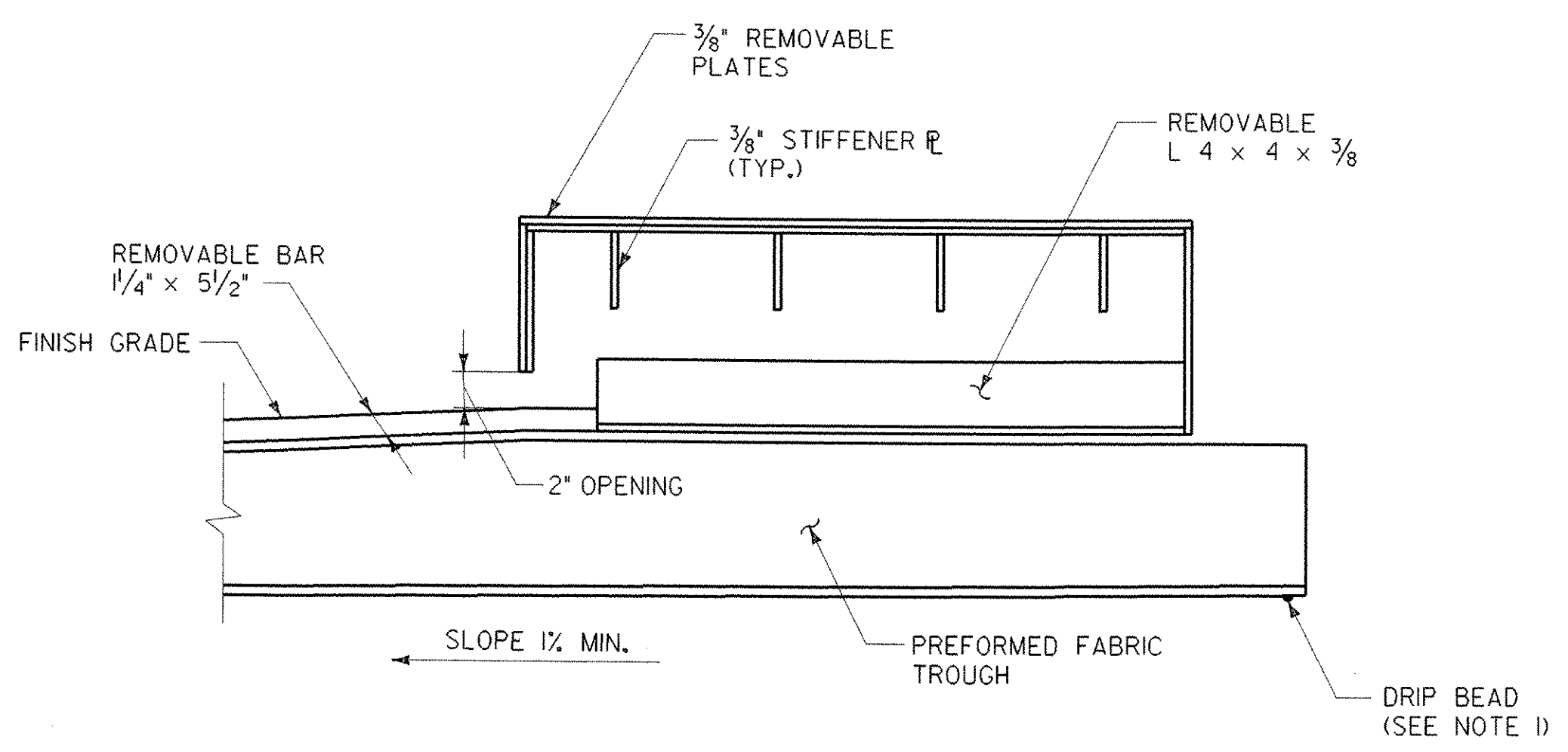
BRACKET ELEVATION
SCALE: 3" = 1'-0"



WASHER FOR BRACKET
SCALE: 3" = 1'-0"



ANCHOR FERRULE DETAIL
SCALE: 3" = 1'-0"



LONGITUDINAL SECTION THROUGH ARMORED BRUSH CURB
N.T.S.

NOTES:

1. A DRIP BEAD OF 1/4" x 7" STRIP OF PREFORMED MATERIAL SHALL BE CEMENTED TO THE BOTTOM OF THE FABRIC TROUGH USING AN ADHESIVE APPROVED BY THE MANUFACTURER. THE DRIP BEAD SHALL BE APPLIED 1" FROM THE DOWNSPOUT END OF THE TROUGH.
2. LAP CURB PLATES IN DIRECTION OF TRAFFIC. FOR DIRECTION OF LAP REFER TO TYPICAL EXPANSION JOINT PLAN, SHEET 23.

LOCATION	"A" DIMENSION							
	0° F	15° F	30° F	45° F	60° F	75° F	90° F	105° F
PIER NO 1	1 3/4"	1 9/16"	1 3/8"	1 1/8"	1"	7/8"	5/8"	3/8"
PIER NO 2	2 1/8"	1 7/8"	1 5/8"	1 1/8"	1 1/16"	1 1/16"	1 1/16"	1/2"

EXPANSION JOINT LOCATION	"X" @ 45° F		
	@ LEFT FASCIA	@ CL CONST.	@ RIGHT FASCIA
PIER NO 1	8"	8"	8"
PIER NO 2	8"	8"	8"

STONE & WEBSTER, INC.

STATE OF VERMONT
AGENCY OF TRANSPORTATION

Town Of HARTLAND	Bridge No. 38
Highway No. 1-91	Log Sta.
Surv. Sta.	
EXPANSION JOINT AT PIER 1 & 4	
SHEET 3 OF 4	
Designed By E. JOHNSTON	Drawn By R J FERRANTE
Checked By E. JOHNSTON	Bridge Design Supervisor
Date DEC. 2000	Date FEB. 2001
PROJECT HARTLAND	PROJECT NO. IM 091-1(36)
Drawing Name za272j+3.dgn	
Bridge Sheet No.	Sheet 25 of 85