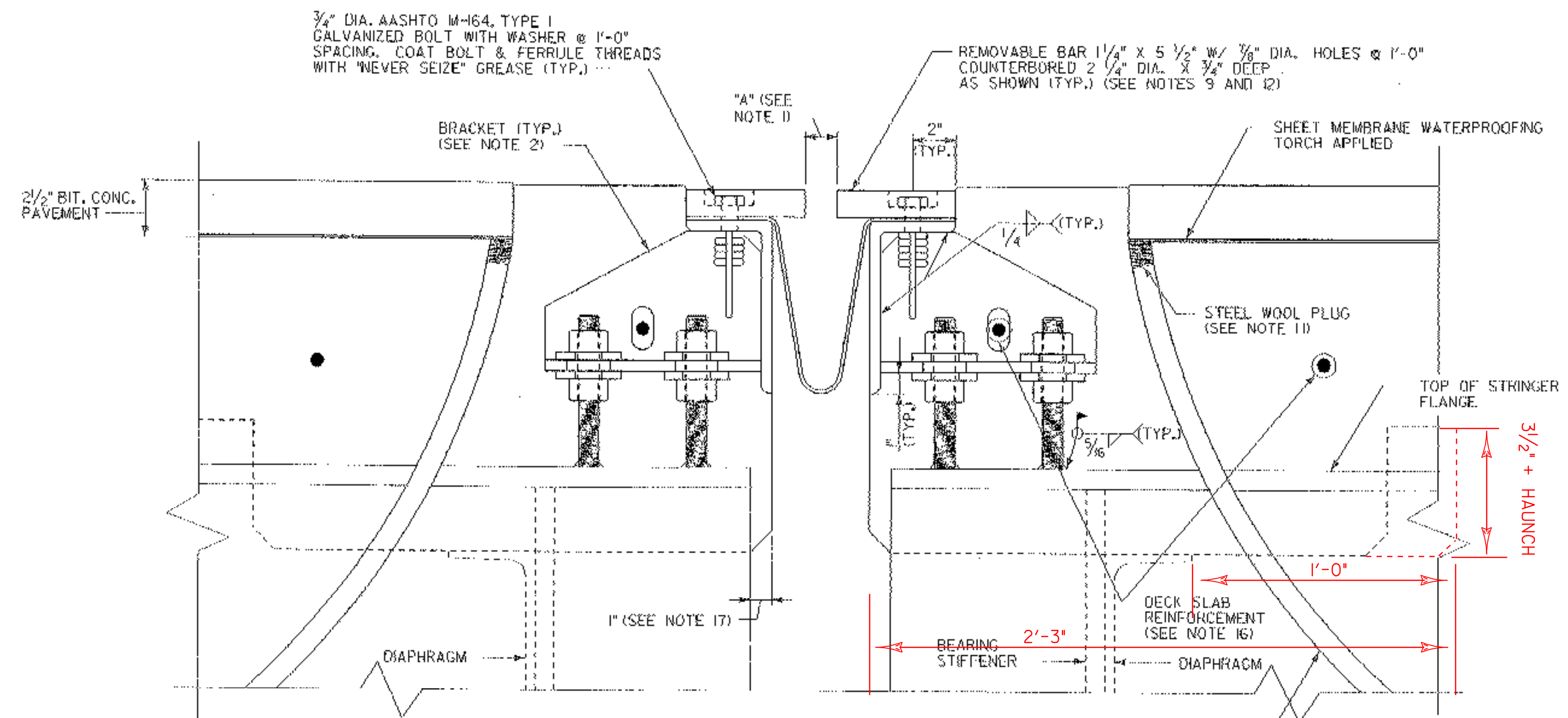


TYPICAL SECTION BETWEEN STRINGERS
(NORMAL TO CL BEARING)
SCALE: 3" = 1'-0"



TYPICAL SECTION AT STRINGERS
(NORMAL TO CL BEARING)
SCALE: 3" = 1'-0"

NOTES:

1. FOR TABLES OF "A" AND "X" DIMENSIONS, SEE EXPANSION JOINT AT JOINT AT PIERS 1 & 4 (3 OF 4), SHEET 25
2. FOR BRACKET, PLATE, WASHER AND ANCHOR FERRULE DETAILS, SEE TYPE EXPANSION JOINT AT PIER 1 & 4 (3 OF 4), SHEET 25
3. DETAILS ON THIS SHEET ARE FOR ITEM 516.10, "BRIDGE EXPANSION JOINT".
4. PREFORMED FABRIC MATERIAL SHALL BE CONTINUOUS AND SHALL CONFORM TO SUBSECTION 707.07 OF THE SPECIFICATIONS.
5. BUTYL RUBBER TAPE SHALL CONFORM TO AASHTO SPECIFICATION M-198, TYPE B.
6. THE FINAL FINISH OF THE EXPANSION DEVICE SHALL BE COVERED DURING THE PLACING OF BRIDGE DECK CONCRETE.
7. ALL STEEL COMPONENTS SHALL BE AASHTO M270 GRADE 36, UNLESS OTHERWISE SPECIFIED. THREADED ROD AND ASSOCIATED NUTS AND WASHERS SHALL CONFORM TO SUBSECTION 714.08 OF THE SPECIFICATIONS. ALL STEEL COMPONENTS AND HARDWARE SHALL BE GALVANIZED OR METALIZED PER SUBSECTION 506.15 OF THE SPECIFICATIONS, UNLESS OTHERWISE SPECIFIED.
8. PAYMENT FOR ITEM 516.10, "BRIDGE EXPANSION JOINT" SHALL INCLUDE THE FABRICATION AND ERECTION OF THE COMPLETE JOINT ASSEMBLY INCLUDING ALL STEEL PLATES, BRACKETS, ANGLES, WELDED STUDS OR RODS, PREFORMED FABRIC DRAIN TROUGH MATERIAL AND PLASTIC DRAIN TUBES, BUTYL RUBBER TAPE AND ANY OTHER MISCELLANEOUS MATERIAL NECESSARY TO INSTALL JOINT.
9. THE 4 x 8 x 1/2 ANGLES SHALL BE FURNISHED AS ONE CONTINUOUS FOR EACH PHASE THE 1 1/4 x 5 1/2 BARS EACH SIDE OF THE JOINT SHALL BE PROVIDED IN EQUAL LENGTHS. SEE TYPICAL EXPANSION JOINT PLAN ON SHEET 23 FOR APPROPRIATE LENGTHS.
10. COAT CONCRETE CONTACT SURFACES WITH EPOXY BONDING COMPOUND MEETING THE REQUIREMENTS OF SUBSECTION 719.02 OF THE SPECIFICATIONS. PAYMENT SHALL BE INCLUDED IN THE UNIT PRICE BID FOR ITEM 516.10, "BRIDGE EXPANSION JOINT".
11. A 1" DIAMETER PLASTIC DRAIN TUBE SHALL BE INSTALLED AS SHOWN AT THE FACE OF CURB. THE UPPER END IS TO BE PLUGGED WITH STEEL WOOL AND THE LOWER END IS TO EXTEND BELOW THE BOTTOM OF THE ADJACENT STRINGER. THE DRAIN TUBES SHALL BE FASTENED TO THE STRINGERS USING A METHOD APPROVED BY THE ENGINEER.
12. FILL COUNTERBORED HOLES WITH HOT POURED JOINT SEALER AFTER BOLT INSTALLATION. COSTS FOR THE WORK SHALL BE SUBSIDIARY TO ITEM 516.10.
13. FABRIC TROUGHS SHALL BE INSTALLED SO THAT MINIMUM SLOPE IS 1% FOR POSITIVE DRAINAGE.
14. FABRIC TROUGH SHALL BE THOROUGHLY CLEANED AND FLUSHED AFTER PAVING OPERATION.
15. EXPANSION JOINTS SHALL BE SHOP ASSEMBLED AND SHIPPED AS ONE UNIT.
16. FOR DECK SLAB REINFORCEMENT, SEE THE TRANSVERSE SECTION AND DECK REINFORCEMENT PLANS.
17. THE DIMENSION FROM END OF EXISTING STRINGER TO END OF NEW DECK SLAB SHALL BE 3 1/2" ±.
18. WORK THIS SHEET WITH TYPICAL DECK SLAB DETAILS AT PIER 1 & 4, SHEET 18.

10-DEC-2002
f:\strings\working\227212.dgn

STATE OF VERMONT	
AGENCY OF TRANSPORTATION	
Town of HARTLAND	Bridge No. 38
Highway No. 1-91	Log Sta.
EXPANSION JOINT AT PIER 1 & 4	
SHEET 2 OF 4	
Designed By E. JOHNSTON	Drawn By R. J. FERRANTE
Checked By E. JOHNSTON	Bridge Design Supervisor E. JOHNSTON
Date DEC. 2000	Date
PROJECT HARTLAND	PROJECT NO. 1M 091-1(36)
Drawing Name 227212.dgn	Sheet 24 of 85
Bridge Sheet No.	