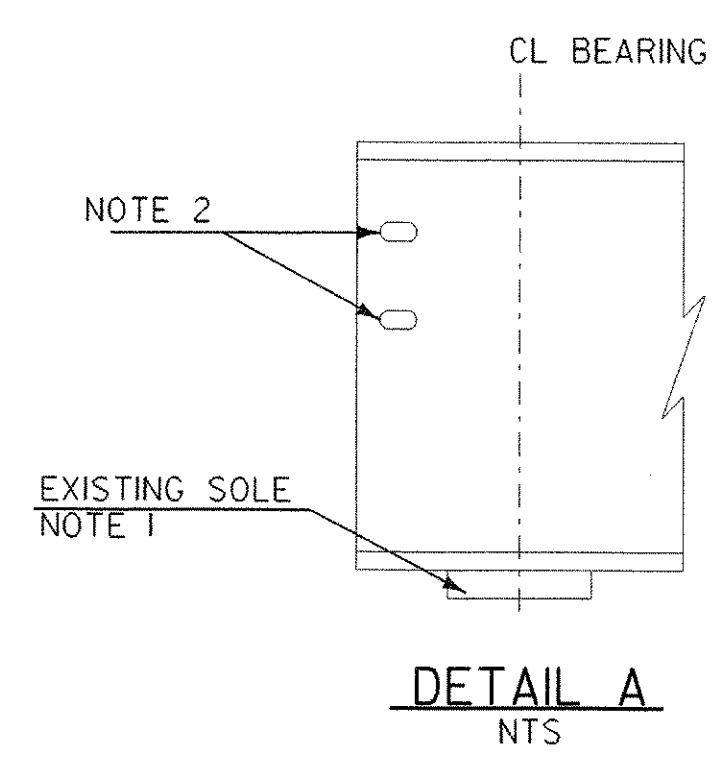
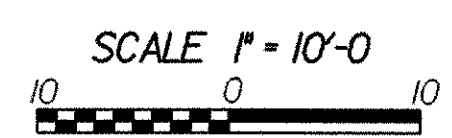


FRAMING PLAN
SCALE: 1" = 10'-0"



NOTES:

- EXISTING SOLE PLATES WILL NEED TO BE REMOVED. A REMOVAL PROCEDURE WILL BE REQUIRED TO BE SUBMITTED PRIOR TO ANY OF THIS WORK BEING DONE. THERE WILL BE NO CUTTING INTO THE BASE METAL OF THE FLANGE ALLOWED DURING THE REMOVAL OF EXISTING SOLE PLATES FROM THE BOTTOM FLANGE. THIS WORK WILL BE INCLUDED AS PART OF THE ITEM 531.0 "BEARING DEVICE ASSEMBLY."
- EXISTING SLOTTED HOLES. IF SLOTTED HOLE IS NOT PRESENT DRILL IN FIELD 1/16" x 2 1/2" TO ACCEPT REINFORCEMENT SHOWN IN CURTAIN WALL ELEVATION ON SHEET 18

STATE OF VERMONT AGENCY OF TRANSPORTATION	
Town Of HARTLAND	Bridge No. 38
Highway No. 1-91	Log Sta. Surv. Sta.
BRIDGE FRAMING PLAN	
Designed By E. JONHSTON	Drawn By N. HERRERA
Checked By Date E. JONHSTON DEC. 2000	Bridge Design Supervisor E. JONHSTON Date FEB. 2001
PROJECT HARTLAND	PROJECT NO. IM 091-1(36)
Drawing Name za272frp.dgn	Sheet 19 of 85
Bridge Sheet No.	

STONE & WEBSTER, INC.

10-DEC-2002

v:\Struc\working\za272frp.dgn