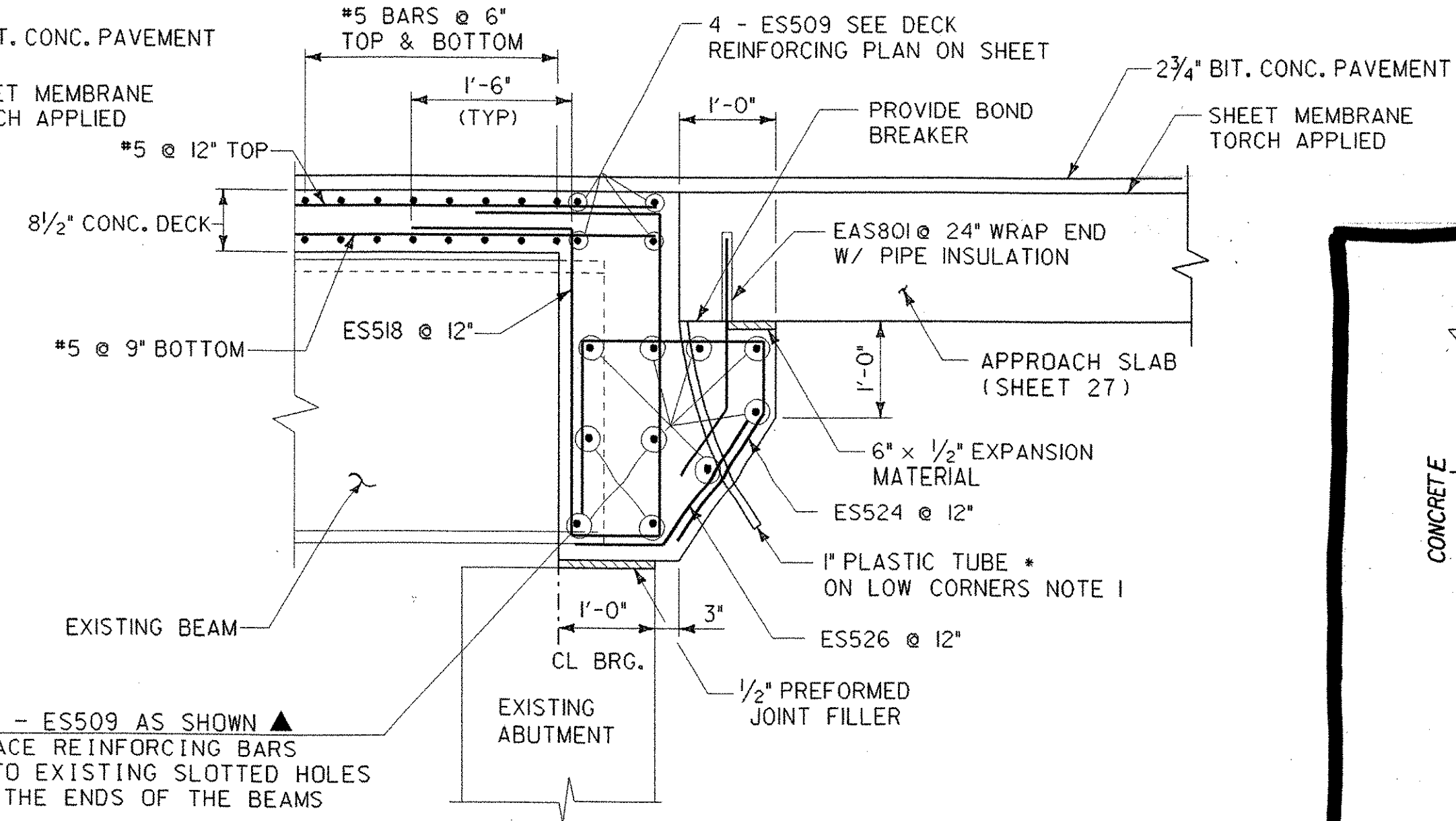
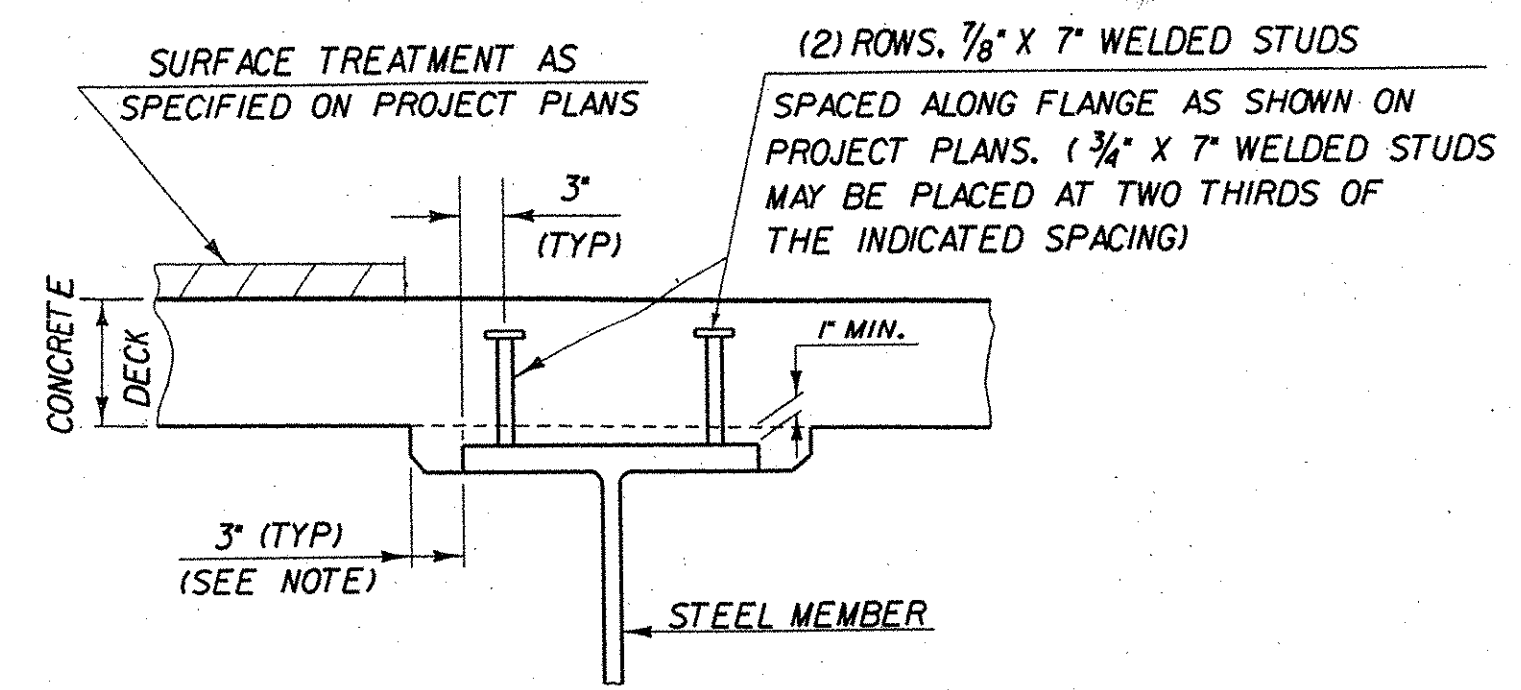


EXISTING ABUTMENT NO. 1
BRIDGE END DETAIL
NORMAL TO CL BRG
SCALE: 3/4" = 1'-0"



EXISTING ABUTMENT NO. 2
BRIDGE END DETAIL
NORMAL TO CL BRG
SCALE: 3/4" = 1'-0"

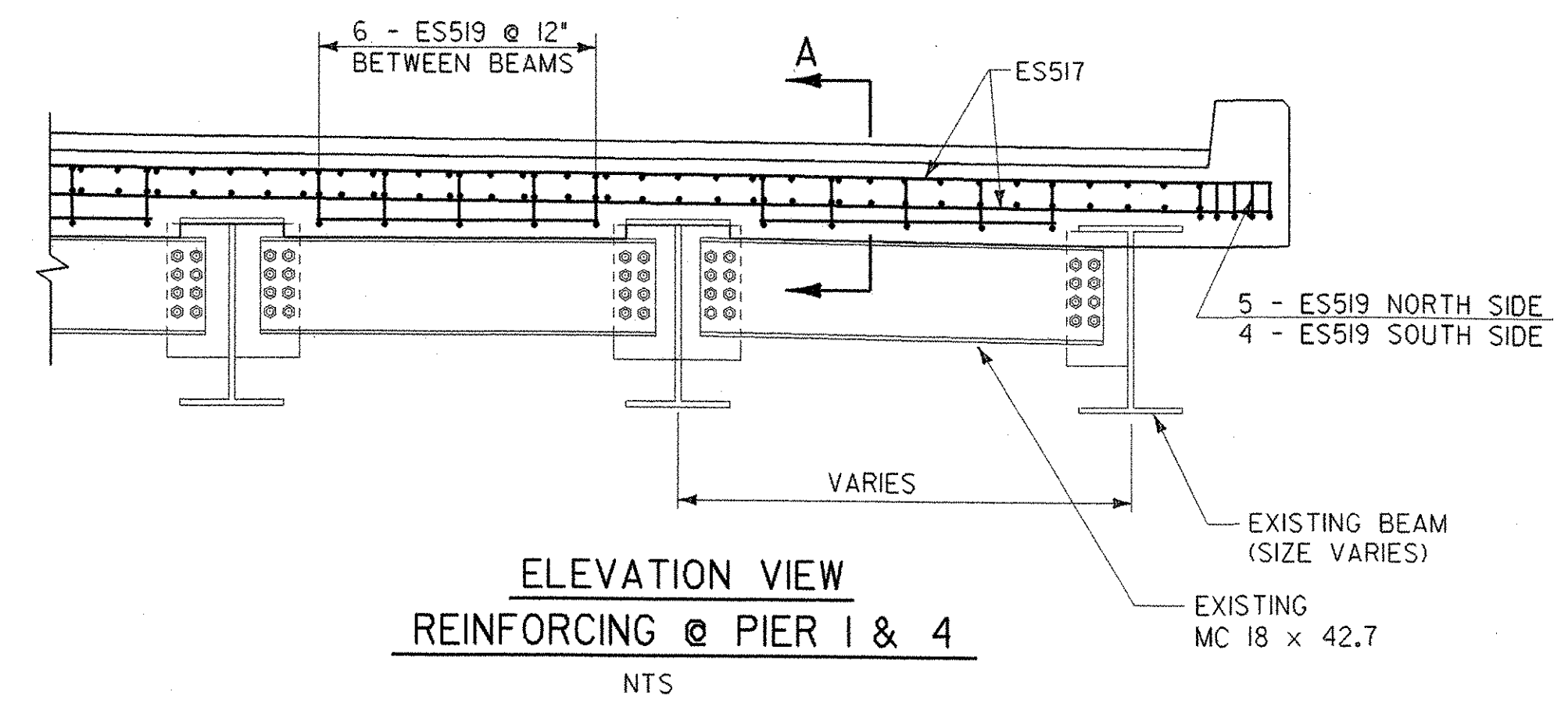


HAUNCH AND SHEAR
CONNECTOR DETAILS

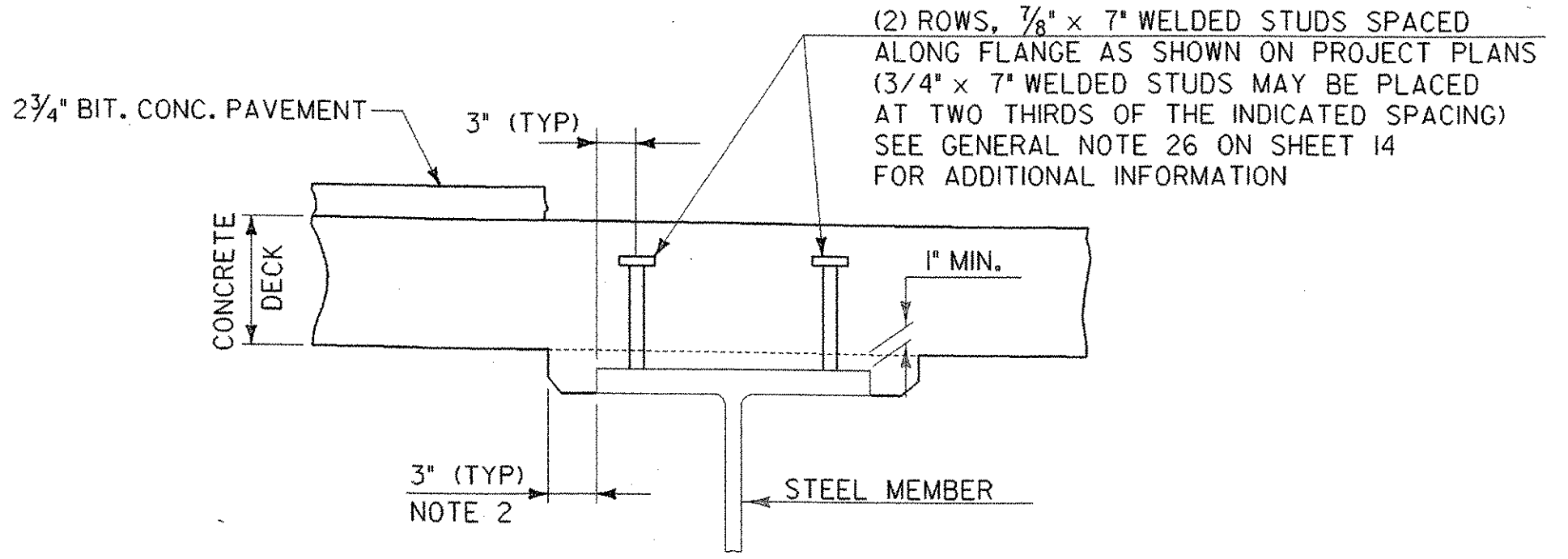
NOTE: THE 3" HORIZONTAL SECTION MAY BE ELIMINATED FOR FORMING SYSTEMS DESIGNED FOR THE CONSTRUCTION OF VERTICAL HAUNCHES. SYSTEMS SHALL BE SUBMITTED FOR APPROVAL TO THE STRUCTURES ENGINEER. ALL VOIDS SHALL BE FILLED WITH MORTAR, TYPE IV OR AN EQUIVALENT PRODUCT FROM THE APPROVED PRODUCTS LIST.

OPTIONAL HAUNCH AND SHEAR
CONNECTOR DETAILS

VTRANS -- 2/5/03



ELEVATION VIEW
REINFORCING @ PIER 1 & 4
NTS



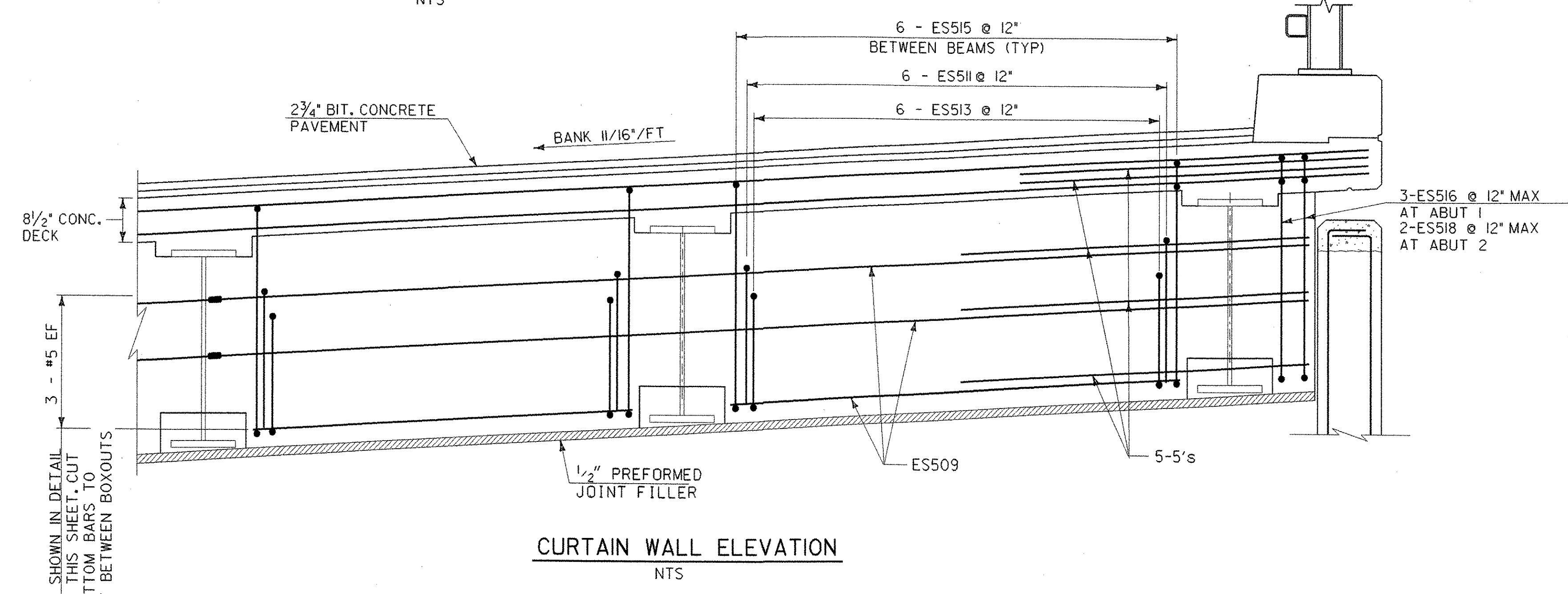
HAUNCH AND SHEAR
CONNECTOR DETAILS
NTS

NOTE:

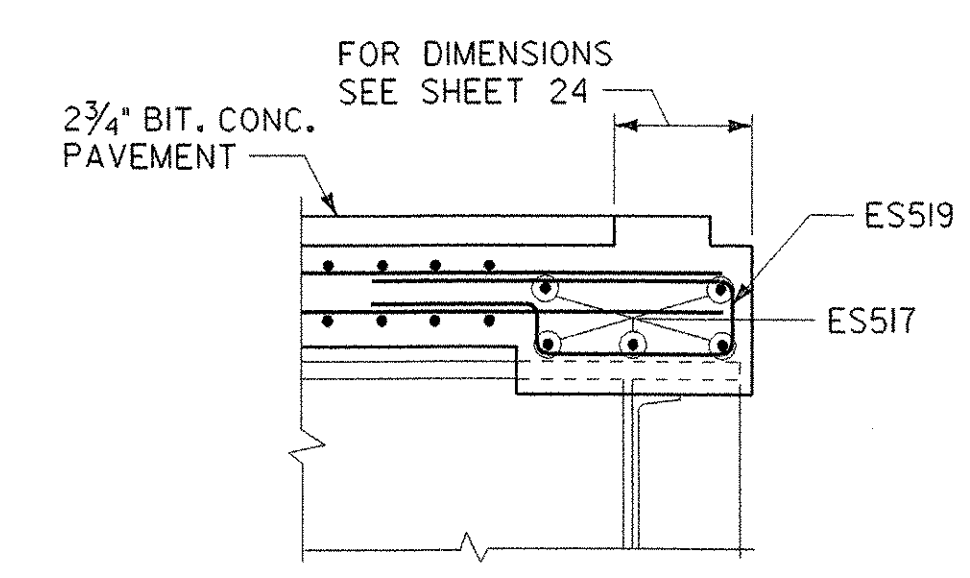
- SEE SPEC. 740.01 TO BE PAID AS PART OF THE ITEM "CONCRETE, CLASS A".
- THE 3" HORIZONTAL SECTION MAY BE ELIMINATED FOR FORMING SYSTEMS DESIGNED FOR THE CONSTRUCTION OF VERTICAL HAUNCHES IF APPROVED BY THE STRUCTURES ENGINEER.

10-DEC-2002

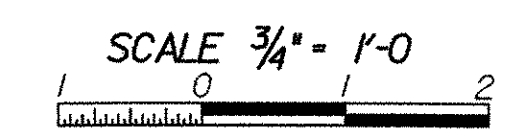
\\Struc\work\king\za272bed.dgn



CURTAIN WALL ELEVATION
NTS



SECTION A-A
SCALE: 3/4" = 1'-0"



STATE OF VERMONT
AGENCY OF TRANSPORTATION

Town Of	HARTLAND	Bridge No.	38
Highway No.	1-91	Log Sta.	
		Surv. Sta.	
BRIDGE END AND MISCELLANEOUS DETAILS (SHEET 1 OF 2)			
Designed By	S. YONGHO	Drawn By	R. J. FERRANTE
Checked By	S. YONGHO	Date	DEC. 2000
		Bridge Design Supervisor	E. JOHNSTON
PROJECT	HARTLAND	PROJECT NO.	IM 091-1(36)
Drawing Name	za272bed.dgn	Sheet	18 of 85
Bridge Sheet No.			

STONE & WEBSTER, INC.