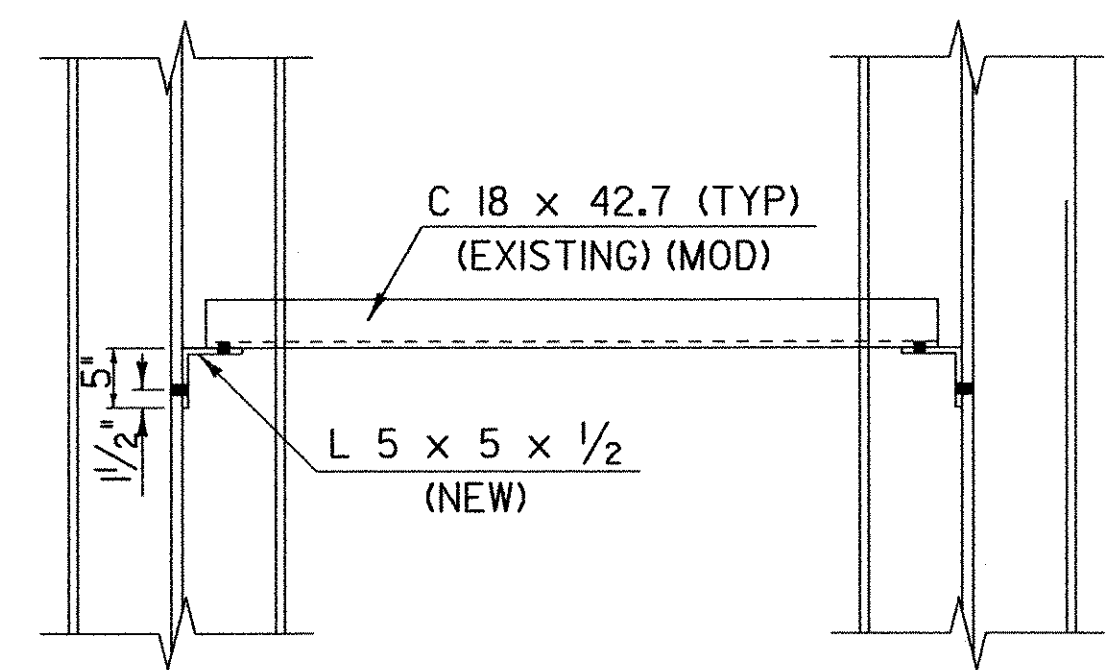
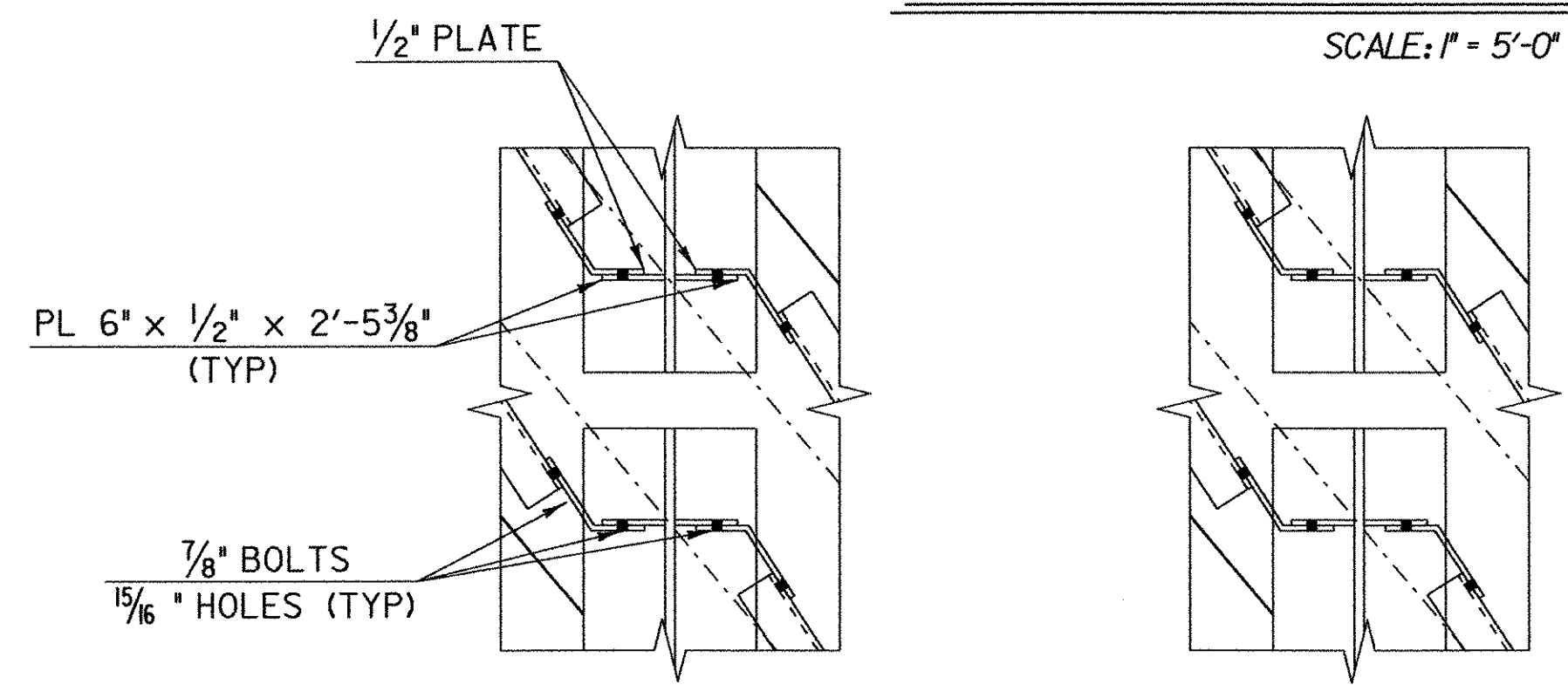


TEMPORARY DETOUR FRAMING PLAN



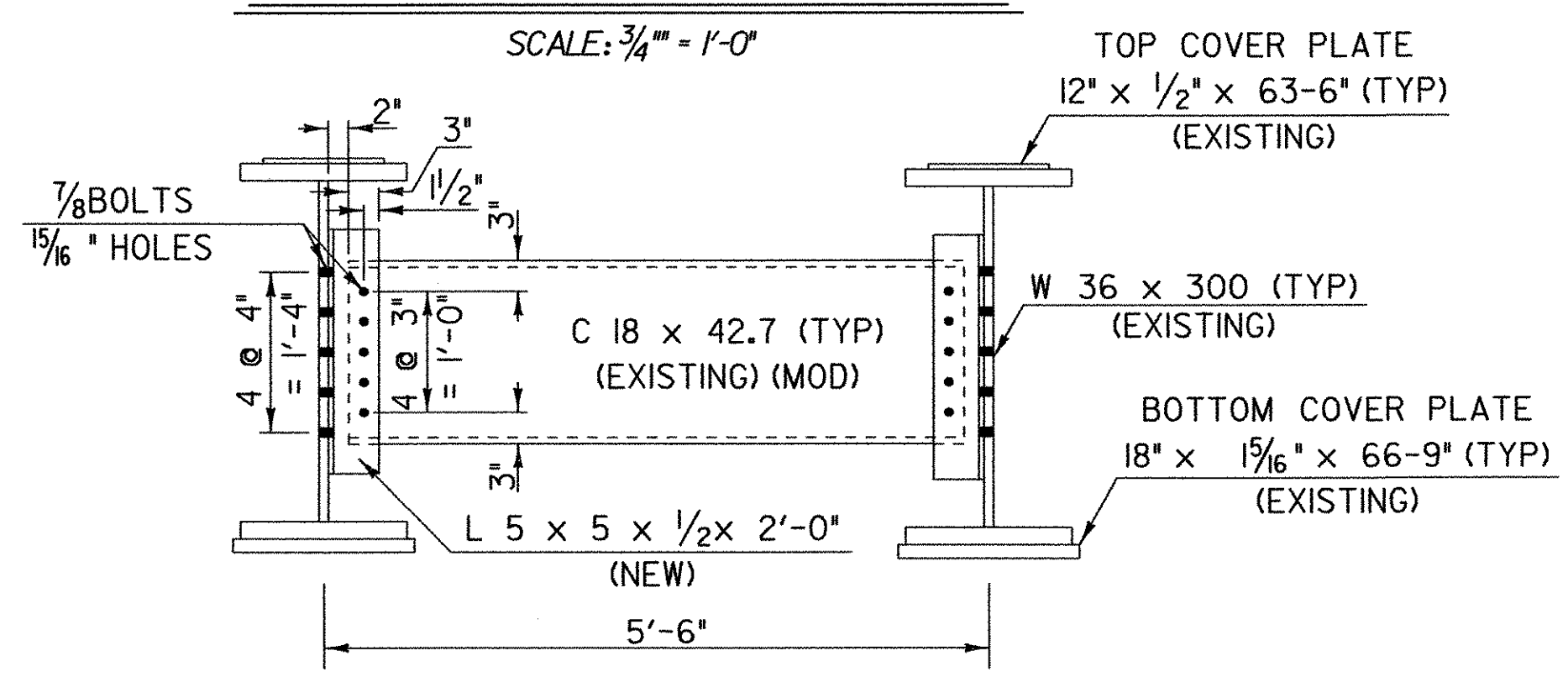
INTERIOR DIAPHRAGM PLAN

SCALE: 3/4" = 1'-0"



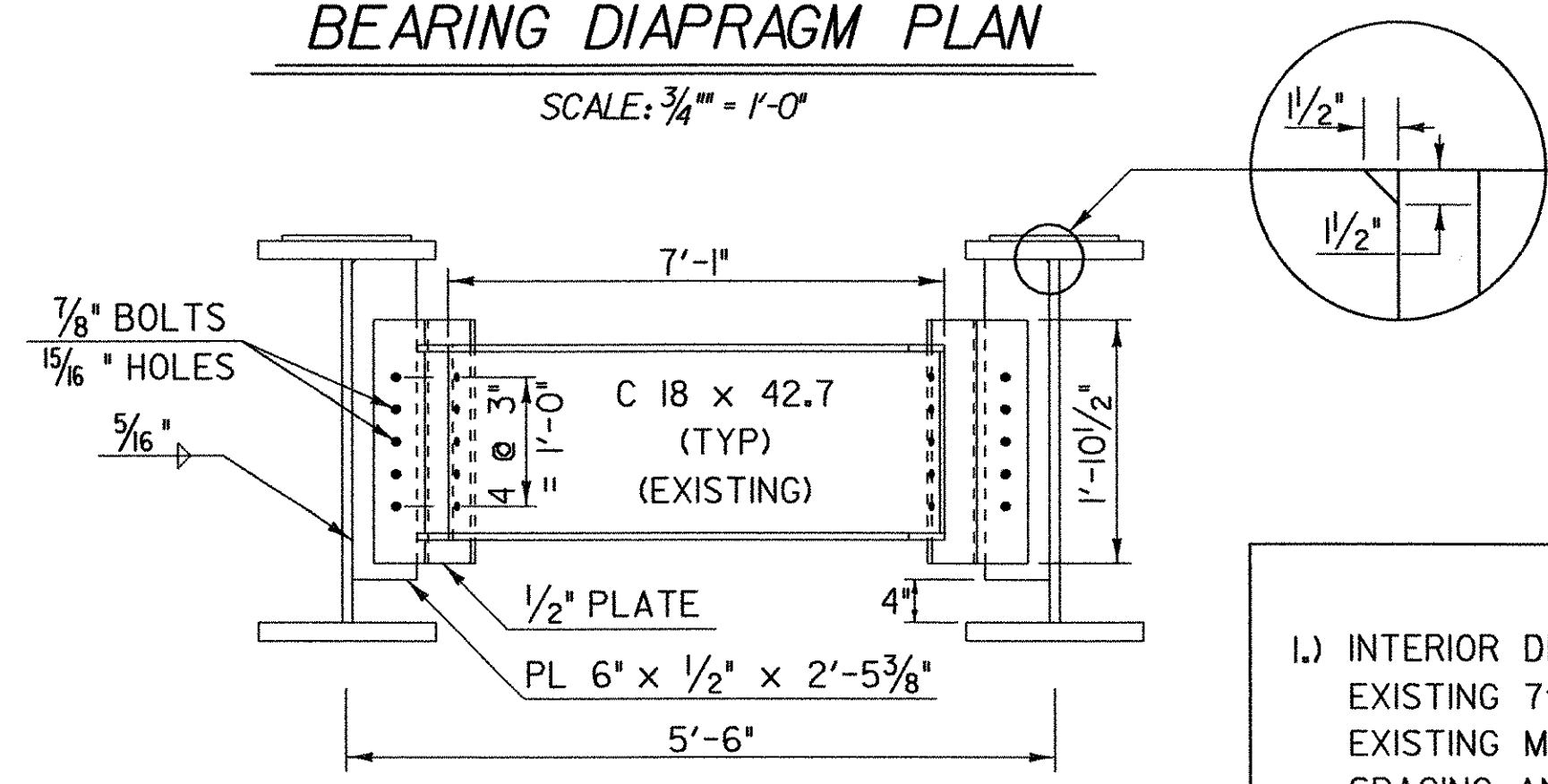
BEARING DIAPHRAGM PLAN

SCALE: 3/4" = 1'-0"



INTERIOR DIAPHRAGM PROFILE

SCALE: 3/4" = 1'-0"



BEARING DIAPHRAGM PROFILE

SCALE: 3/4" = 1'-0"

BEAM NO.	LOCATION	STATION	LENGTH (C/BRG. - C/BRG.)	TOTAL LENGTH
1	SPAN 1	103+11.10 - 104+08.10 LT	97.00 (97'-0")	98.50 (98'-6")
2	SPAN 1	103+04.55 - 104+01.55 LT	97.00 (97'-0")	98.50 (98'-6")
3	SPAN 1	102+98.00 - 103+95.00 C/L	97.00 (97'-0")	98.50 (98'-6")
4	SPAN 1	102+91.45 - 103+88.45 RT	97.00 (97'-0")	98.50 (98'-6")
5	SPAN 1	102+84.90 - 103+81.90 RT	97.00 (97'-0")	98.50 (98'-6")
11	SPAN 3	104+10.05 - 104+56.15 LT	46.10 (46'-1 1/4")	47.60 (47'-7 1/4")
12	SPAN 3	104+03.50 - 104+49.50 LT	46.10 (46'-1 1/4")	47.60 (47'-7 1/4")
13	SPAN 3	103+96.95 - 104+43.05 C/L	46.10 (46'-1 1/4")	47.60 (47'-7 1/4")
14	SPAN 3	103+90.40 - 104+36.50 RT	46.10 (46'-1 1/4")	47.60 (47'-7 1/4")
15	SPAN 3	103+83.85 - 104+29.95 RT	46.10 (46'-1 1/4")	47.60 (47'-7 1/4")
16	SPAN 4	*102+78.25 - 103+09.15 LT	30.90 (30'-10 3/4")	32.40 (32'-4 3/4")
17	SPAN 4	*102+78.25 - 103+02.60 LT	24.35 (24'-4 1/4")	25.85 (25'-10 1/4")
18	SPAN 4	*102+78.25 - 102+96.05 C/L	17.80 (17'-9 5/8")	19.30 (19'-3 5/8")
19	SPAN 4	*102+78.25 - 102+89.50 RT	11.25 (11'-3")	12.75 (12'-9")
20	SPAN 4	*102+78.25 - 102+82.95 RT	4.70 (4'-8 1/2")	6.20 (6'-2 3/8")

*NOTE: STATIONS MEASURED BACK ALONG TANGENT

NOTES

- INTERIOR DIAPHRAGMS ARE TO BE MODIFIED FROM EXISTING 7'-1" CHANNEL SECTIONS BY CUTTING EXISTING MEMBERS TO ACCOMMODATE NEW 5'-6" BEAM SPACING AND DRILLING NEW BOLT HOLES ON CUT END
- ALL BOLTS SHALL BE "HIGH STRENGTH BOLTS CONFORMING WITH AASHTO M164-TYPE 3 BOLTS

TEMP. BRIDGE FRAMING PLAN - SHEET 1 OF 2

PROJECT NAME: HARTLAND
PROJECT NUMBER: IM 091-1(36)

FILE NAME: /99d272/str/sd272fra.dgn
PROJECT LEADER: S. FARNSWORTH
DESIGNED BY: FOWLER/UPMAL
sq272fr1.l

PLOT DATE: 03-FEB-2003
DRAWN BY: K. UPMAL
CHECKED BY: M. FOWLER
SHEET 11B OF 85