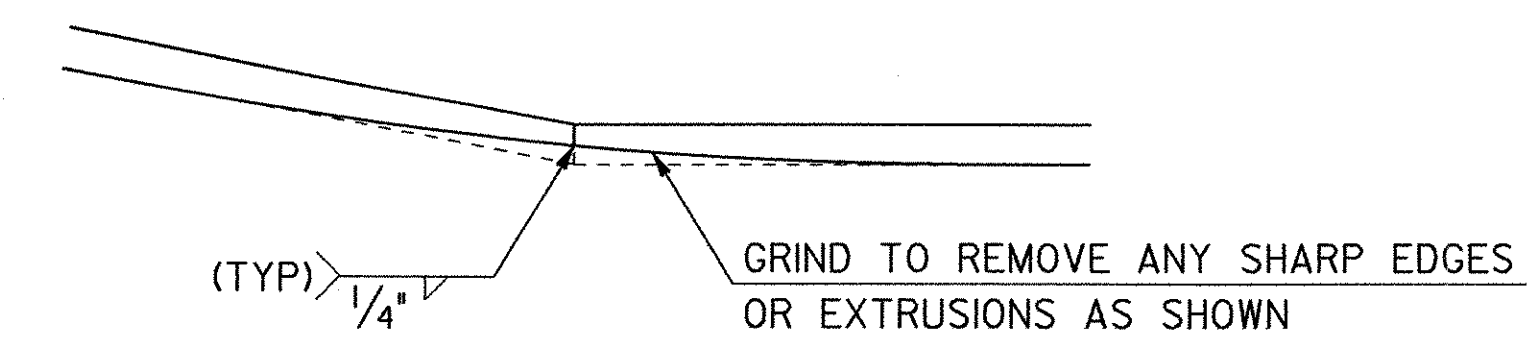


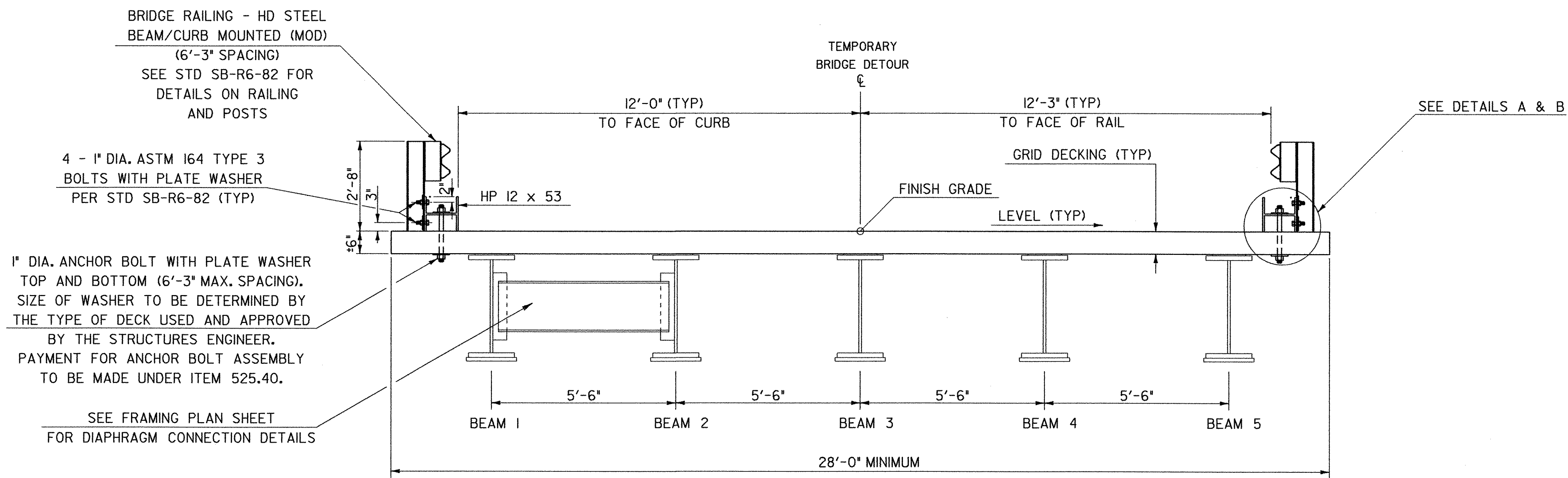
DETAIL A

SCALE: 1/2" = 1'-0"



DETAIL B

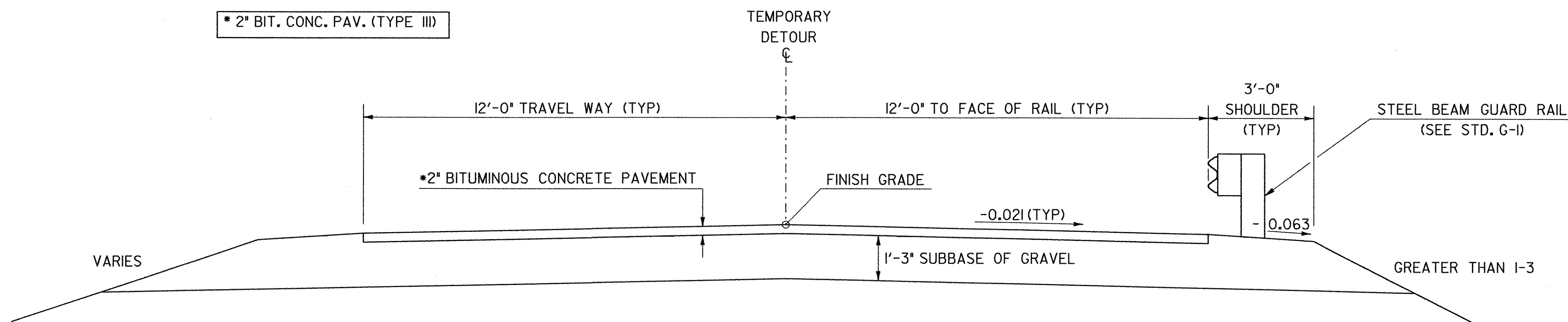
N.T.S.



TEMPORARY BRIDGE TYPICAL

SCALE: 1/2" = 1'-0"

- NOTES**
- 1.) SEE PROJECT SPECIAL PROVISIONS FOR A LISTING OF THE MATERIALS BEING SUPPLIED BY THE STATE.
 - 2.) HP 12 x 53 TO BE PAID AS ITEM 525.40, "BRIDGE RAILING - HD STEEL BEAM CURB MOUNTED (MOD-I) (H-PILE CURB)".
 - 3.) GUARDRAIL AND SUBBASE OF GRAVEL SHALL BE INCLUDED IN ITEM 528.II *TWO WAY TEMPORARY BRIDGE (MOD I) (SUBSTRUCTURES AND APPROACH FILLS)



TEMPORARY ROADWAY TYPICAL

SCALE: 1/2" = 1'-0"

TEMP. DETOUR - BRIDGE AND ROADWAY TYPICALS

PROJECT NAME: HARTLAND	PLOT DATE: 05-FEB-2003
PROJECT NUMBER: IM 091-K36)	DRAWN BY: K. UPMAL
FILE NAME: str7/99a272/sq272typ.dgn	CHECKED BY: M. FOWLER
PROJECT LEADER: S. FARNSWORTH	SHEET 8 OF 85
DESIGNED BY: FOWLER/UPMAL	
sq272typ.I	