

GPS CONTROL POINTS

HVCTRL #1

STANDARD DISK STAMPED
EASY
N = 387983.4500
E = 1670810.0100
ELEV = 486.680

GENERAL LOCATION, HARTLAND, VERMONT. TO REACH FROM THE INTERSECTION OF INTERSTATE 91 AND THE INTERSTATE 91 EXIT 9 NORTH BOUND ON RAMP IN HARTLAND GO NORTH ALONG INTERSTATE 91 FOR 2.8 MI (4.5 KM) TO THE SITE OF THE MARK ON THE LEFT, SET IN THE MEDIAN BETWEEN INTERSTATE 91 NORTH AND SOUTH BOUND LANES. THE MARK IS SET FLUSH IN THE TOP OF A 30 CM ROUND CONCRETE MONUMENT POURED 1.3M (4.3 FT) DEEP.

THE MARK IS LOCATED 12.0 M (39.4 FT) WEST OF AND ABOUT 2.0 M (6.6 FT) HIGHER THAN THE WEST EDGE OF PAVEMENT OF THE NORTH BOUND LANE OF INTERSTATE 91, 16.4 M (53.8 FT) EAST OF AND ABOUT LEVEL WITH THE EAST EDGE OF PAVEMENT OF THE SOUTH BOUND LANE OF INTERSTATE 91, 56.1M (184.1 FT) SOUTH OF A 1.2 M (3.9 FT) X 1.2 M (3.9 FT) DROP INLET, AND 0.4 M (1.3 FT) EAST OF A FIBERGLASS WITNESS POST.

HVCTRL #10

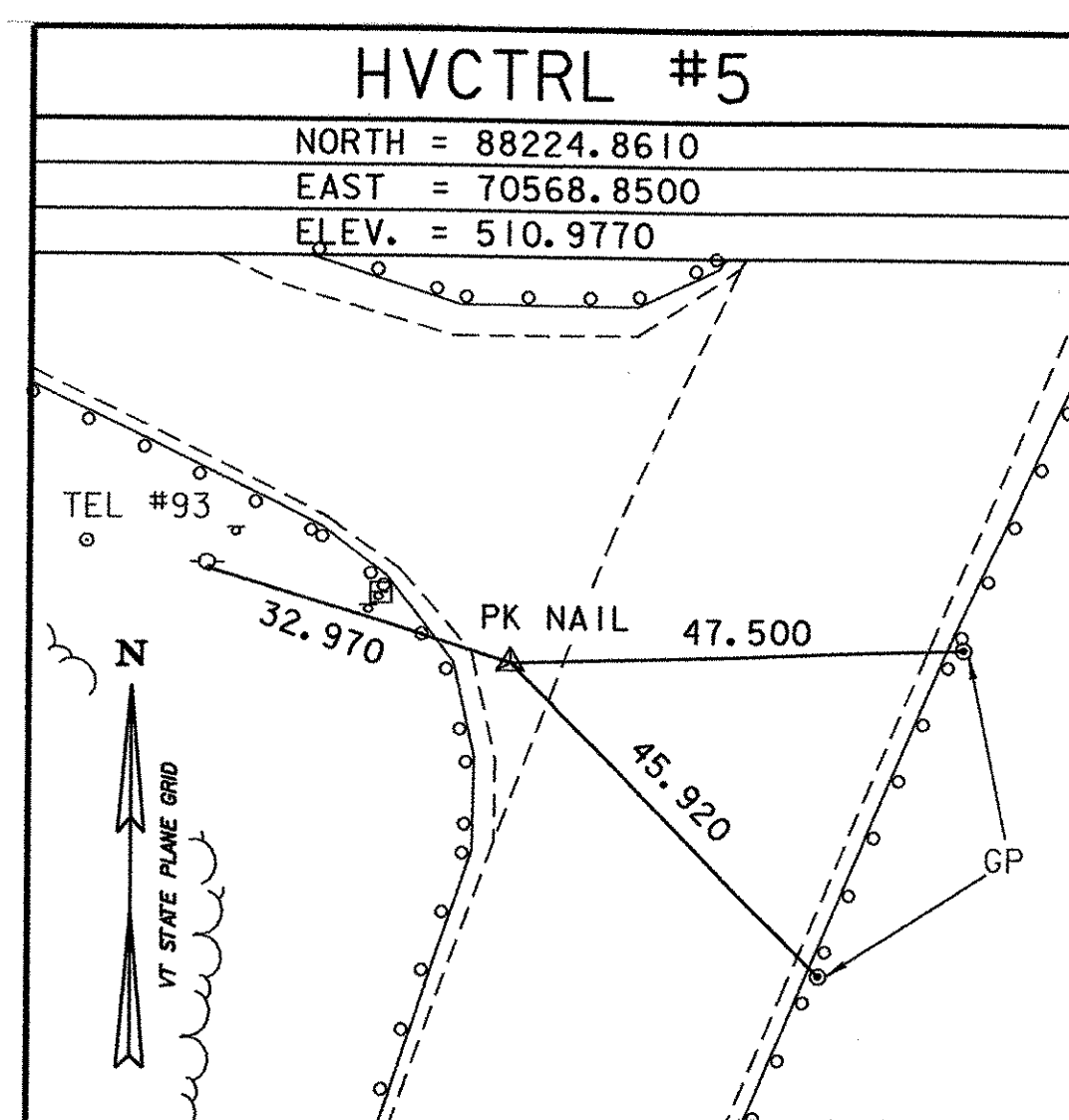
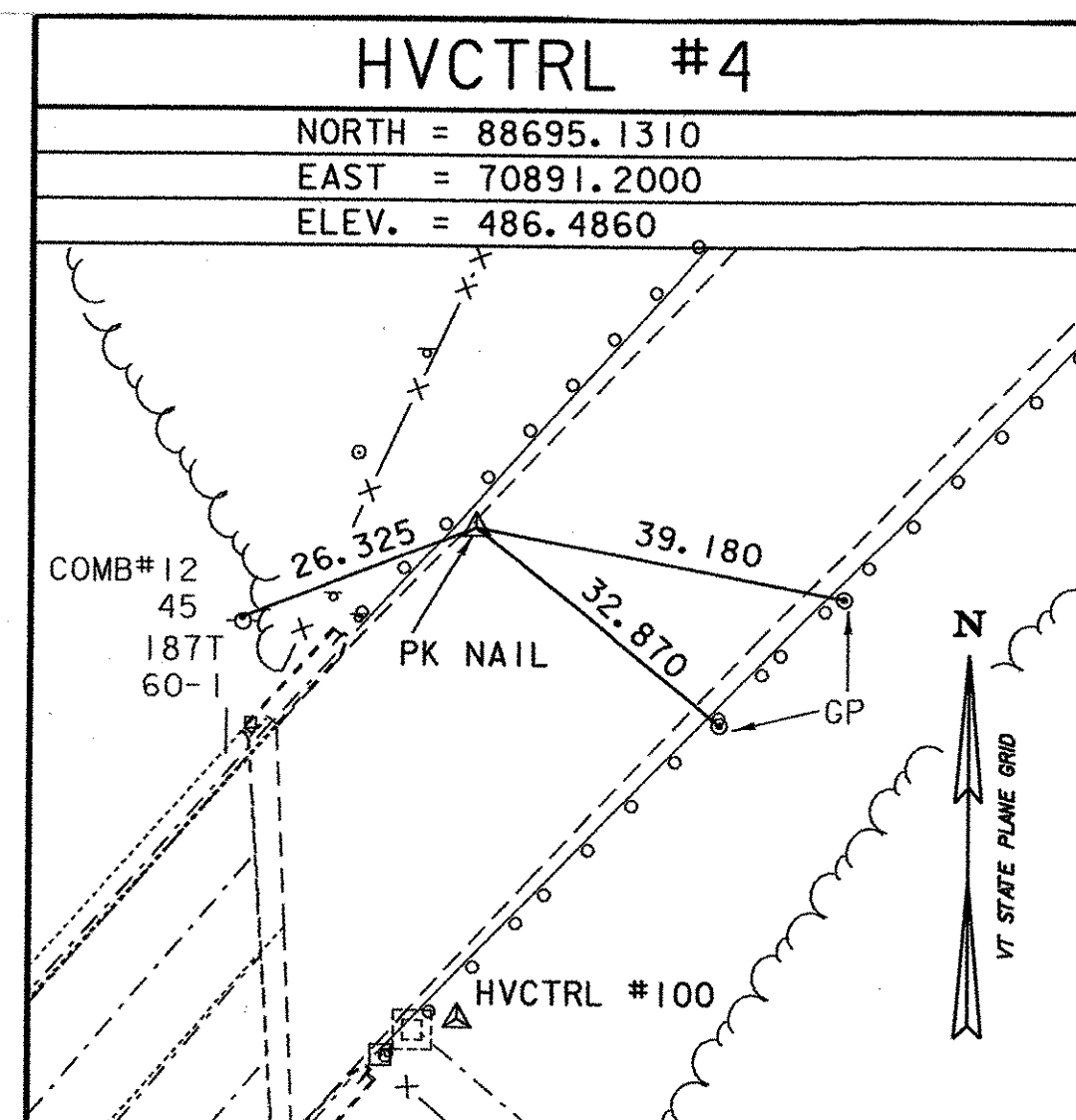
STANDARD DISK STAMPED
EASY AZ MK
N = 389147.9300
E = 1670717.7200
ELEV = 460.500

GENERAL LOCATION, HARTLAND, VERMONT. TO REACH FROM THE INTERSECTION OF INTERSTATE 91 AND THE INTERSTATE 91 EXIT 9 NORTH BOUND ON RAMP IN HARTLAND GO NORTH ALONG INTERSTATE 91 FOR 3.05 MI (4.91 KM) TO THE MARK ON THE LEFT, SET IN THE NORTHEAST CORNER OF A 1.2 M (3.9 FT) X 1.2 M (3.9 FT) CONCRETE BASE FOR A DROP INLET.

THE MARK IS LOCATED 13.0 M (42.7 FT) EAST OF AND ABOUT 2.5 M (8.2 FT) LOWER THAN THE EAST EDGE OF PAVEMENT OF THE INTERSTATE 91 SOUTH BOUND LANE, 6.0 M (19.7 FT) WEST OF AND ABOUT 2.0 M (6.6 FT) LOWER THAN THE WEST EDGE OF PAVEMENT OF THE INTERSTATE 91 NORTH BOUND LANE, 0.2 M (0.7 FT) SOUTH OF THE NORTH EDGE OF THE 1.2 M (3.9 FT) X 1.2 M (3.9 FT) CONCRETE PAD, 1.0 M (3.3 FT) NORTH OF THE SOUTH EDGE OF THE 1.2 M (3.9 FT) X 1.2 M (3.9 FT) CONCRETE PAD, AND 0.55 M (1.80 FT) WEST OF A FIBERGLASS WITNESS POST.

- TO ALLOW THE STATE PLANE COORDINATES TO FIT THE AGENCY DESIGN PLANE, SUBTRACT 300000 FROM THE NORTHING AND SUBTRACT 1600000 FROM THE EASTING.
- DESCRIPTION PROVIDED BY VERMONT AGENCY OF TRANSPORTATION GEODETIC SURVEY UNIT.

TRANSVERSE TIES



* MAIN TRAVERSE COMPLETED: JUNE 9, 2000 BY: R. GILMAN PC/ R. BULLOCK

ALIGNMENT COORDINATES

	NORTHING	EASTING	ELEVATION
M POT STA 421+95.05	88724.72	70939.54	482.33
M PC STA 422+24.807	88703.41	70918.77	484.35
M POC STA 427+69.44	88257.97	70609.77	509.15

DATUM

VERTICAL	NAVD 88
HORIZONTAL	NAD-83(96)
ADJUSTMENT	NONE

NOTES:

1. THE ELEVATIONS GIVEN FOR THE ALIGNMENT COORDINATES REFLECT THE EXISTING CONDITIONS BASED ON THE SURVEY PERFORMED ON JUNE 21, 2000.
2. ALL DIMENSIONS GIVEN ON THIS SHEET ARE IN FEET UNLESS OTHERWISE NOTED.

**STATE OF VERMONT
AGENCY OF TRANSPORTATION**

Town Of HARTLAND	Bridge No. 38
Highway No. 1-91	Log Sta.
	Surv. Sta.
TIE SHEET	
Designed By E. JOHNSTON	Drawn By N. HERRERA
Checked By E. JOHNSTON	Bridge Design Supervisor E. JOHNSTON
Date DEC. 2000	Date FEB. 2001
PROJECT HARTLAND	PROJECT NO. IM 091-1(36)
Drawing Name za272tie.dgn	
Bridge Sheet No.	Sheet 5 of 85

STONE & WEBSTER, INC.