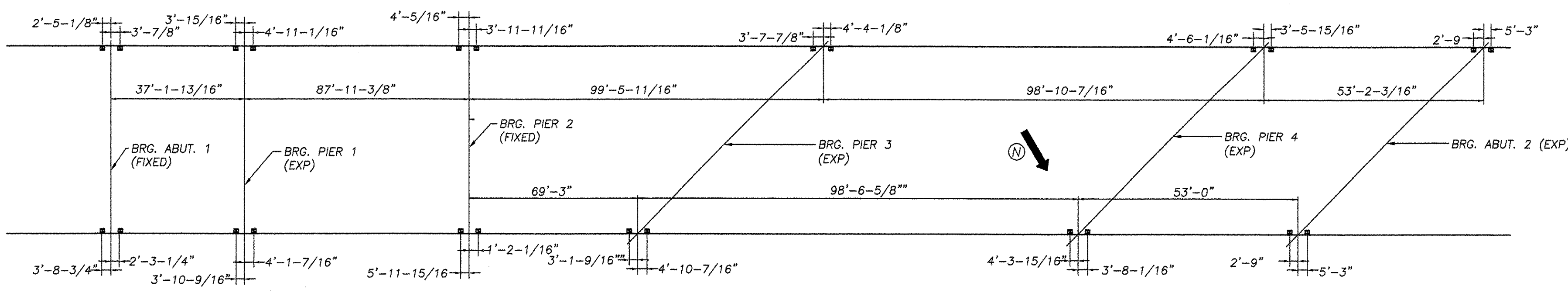
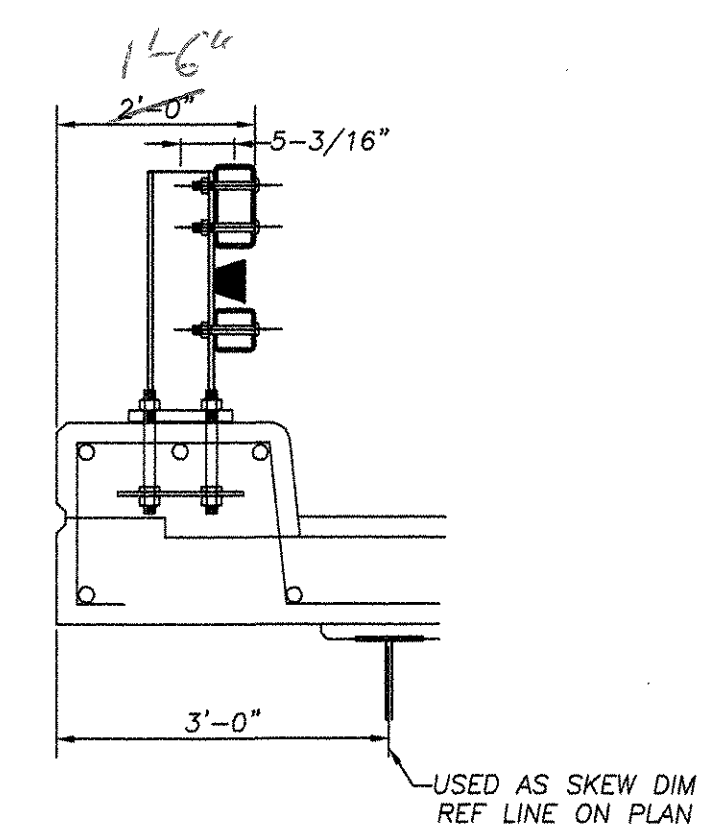


525.33



PARTIAL PLAN VIEW

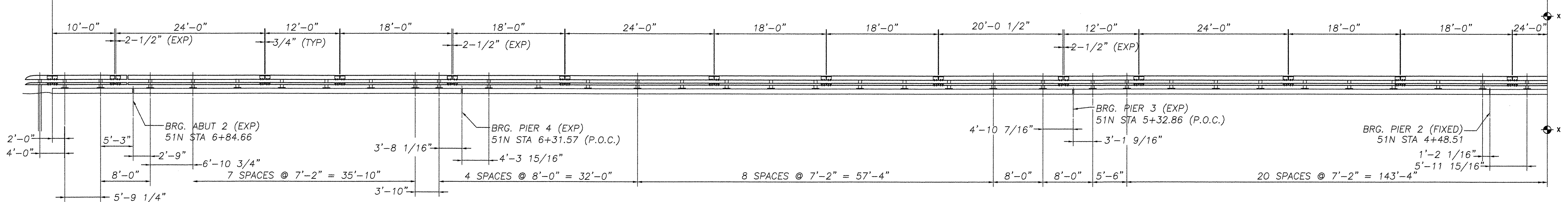


Mk.	Qty.	Description	Size/Shape	Length/Qty per unit	Material
52		BRIDGE RAIL PED POST 680mm OAH W/ BASE PLATE			
52		POST UPRIGHT	W6 x 25	2'-03/8"	A709 Gr. 50
52		POST BASE PLATE	1" x 10"	1'-2"	A709 Gr. 50
18		UPPER SPLICE TUBE FOR 8 x 4 RAIL			
18		TUBE	TS 7x3x3/8	1'-8"	A500 Gr. B
36		LOCK NUTS	5/8"	2 pcs.	A563 Gr. DH
18		LOWER SPLICE TUBE FOR 4 x 4 RAIL			
18		TUBE	TS 3x3x5/16	1'-8"	A500 Gr. B
36		LOCK NUTS	5/8"	2 pcs.	A563 Gr. DH
1		UPPER RAIL	TS 8x4x5/16	10'-0"	A500 Gr. B
1		LOWER RAIL	TS 4x4x1/4	10'-0"	A500 Gr. B
6		UPPER RAIL	TS 8x4x5/16	24'-0"	A500 Gr. B
6		LOWER RAIL	TS 4x4x1/4	24'-0"	A500 Gr. B
2		UPPER RAIL	TS 8x4x5/16	12'-0"	A500 Gr. B
2		LOWER RAIL	TS 4x4x1/4	12'-0"	A500 Gr. B
1		UPPER RAIL	TS 8x4x5/16	20'-0"	A500 Gr. B
1		LOWER RAIL	TS 4x4x1/4	20'-0"	A500 Gr. B
2		UPPER RAIL	TS 8x4x5/16	21'-0-3/8"	A500 Gr. B
2		LOWER RAIL	TS 4x4x1/4	21'-0-3/8"	A500 Gr. B
6		UPPER RAIL	TS 8x4x5/16	18'-0"	A500 Gr. B
6		LOWER RAIL	TS 4x4x1/4	18'-0"	A500 Gr. B
4		UPPER RAIL	TS 8x4x5/16	24'-9-1/2"	A500 Gr. B
4		LOWER RAIL	TS 4x4x1/4	24'-9-1/2"	A500 Gr. B
*	52	ANCHOR PLATE	3/8 x 9 3/8	1'-1"	A709 Gr. 36
*	208	ANCHOR STUD	1" DIA.	12"	A449
*	416	HEX NUT	1" DIA.	- - -	A563
*	208	JAMB NUT	1" DIA.	- - -	A563
*	208	WASHER	1" DIA.	- - -	F436
	208	ROUND HEAD BOLT	3/4" DIA.	6"	M164 TYPE 1
	208	HEX NUT	3/4" DIA.	- - -	A563
	208	WASHER	3/4" DIA.	- - -	F436
	144	SPLICE BOLT	5/8" DIA.	1 3/4"	M164 TYPE 1
	144	WASHER	5/8" DIA.	- - -	F436
	32	PIPE SPACER (SCH. 40)	3/4" DIA.	1/2"	A53
*	52	BEARING PAD	1/8 x 10	1'-2"	M251

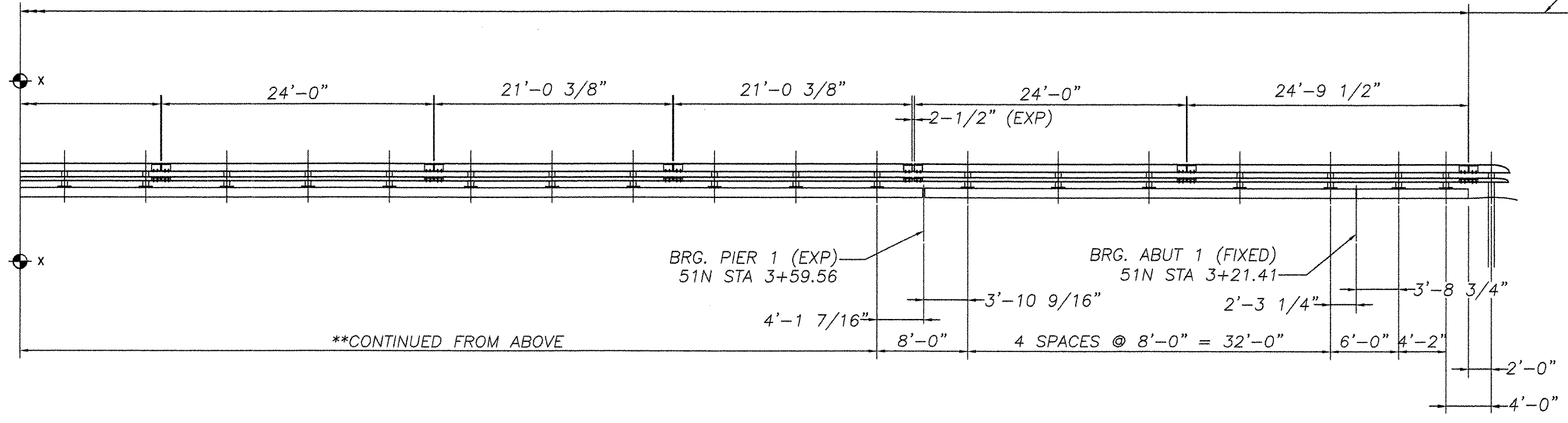
\* ANCHORS NOT PROVIDED BY HIGHWAY SAFETY CORP. - SHOWN FOR REFERENCE ONLY.

621.72  
APPROACH ITEM 525.33

PAY LIMITS ITEM 525.33 368'-7-1/4"



APPROACH ITEM 621.72



\*\*CONTINUED FROM ABOVE

END OF WINGWALLS HAVE BEEN LOCATED APPROXIMATELY BY VAOT SURVEY. CONTRACTOR SHALL VERIFY REQUIRED DIMENSIONS AND RAIL LENGTHS PRIOR TO FABRICATION

1-89 NORTH BOUND  
NORTHEAST ELEVATION  
LOOKING AT FACE OF RAIL  
FROM C OF ROAD.

No.	REVISIONS	Date
0	Initial submittal	28-JAN-05
0	Re-submittal	09-MAR-05
0	Re-submittal	02-MAY-05

TVGA CONSULTANTS

NO EXCEPTIONS TAKEN  REJECTED  
 FURNISH AS CORRECTED  
 REVISE AND RESUBMIT  
 ENGINEER has reviewed Shop Drawings and Samples and other data which Contractor is required to submit, only for conformance with the information given in the Contract Documents and compatibility with the design concept of the completed Project as a functioning whole as indicated in the Contract Documents. Such reviews do not extend to means, methods, techniques, sequences or procedures of construction or to safety precautions and programs incident thereto. Contractor is responsible for dimensions to be confirmed and correlated at the job site for information that pertains solely to the fabrication processes or to techniques of construction, and for coordination of the work of all trades.

By: *[Signature]*  
DATE: 3/10/05



HIGHWAY SAFETY CORP.  
GLASTONBURY, CT

ITEM 525.33 BRIDGE RAILING NETC-2 RAIL  
TOWN OF BOLTON  
COUNTY OF CHITTENDEN  
PROJECT AC IM 089-2(29)  
BRIDGE 51N&S OVER U.S. ROUTE 2

GENERAL CONTRACTOR: F.R. LAFAYETTE, INC.  
DRAWN: C CRAMER  
CHECKED: *[Signature]*  
DATE: 11-31-04  
SCALE: 1/8"=1'  
HSC REFERENCE NO.: 1479  
SIZE: D REVISION: 0  
SHEET NO.: 4 of 5

B-2429