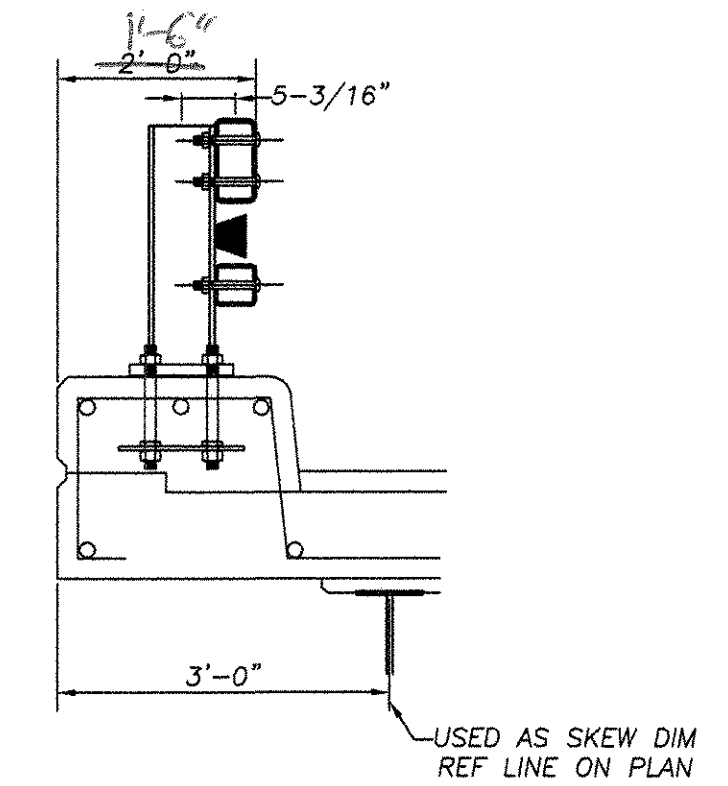


PARTIAL PLAN VIEW

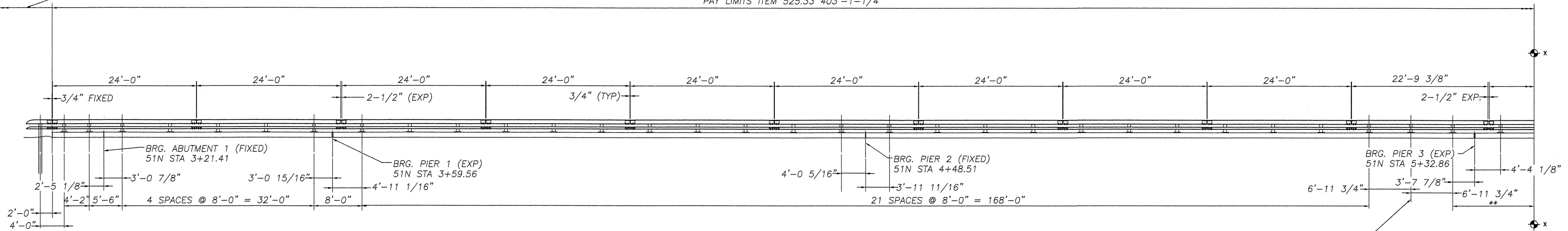


BILL OF MATERIAL (ITEM 525.33)					
Mk.	Qty.	Description	Size/Shape	Length/Qty. per unit	Material
52		BRIDGE RAIL PED POST 680mm OAH W/ BASE PLATE			
52		POST UPRIGHT	W6 x 25	2'-03/8"	A709 Gr. 50
52		POST BASE PLATE	1" x 10"	1'-2"	A709 Gr. 50
17		UPPER SPLICE TUBE FOR 8 x 4 RAIL			
17		TUBE	TS 7x3x3/8	1'-8"	A500 Gr. B
34		LOCK NUTS	5/8"	2 pcs.	A563 Gr. DH
17		LOWER SPLICE TUBE FOR 4 x 4 RAIL			
17		TUBE	TS 3x3x5/16	1'-8"	A500 Gr. B
34		LOCK NUTS	5/8"	2 pcs.	A563 Gr. DH
13		UPPER RAIL	TS 8x4x5/16	24'-0"	A500 Gr. B
13		LOWER RAIL	TS 4x4x1/4	24'-0"	A500 Gr. B
1		UPPER RAIL	TS 8x4x5/16	14'-0"	A500 Gr. B
1		LOWER RAIL	TS 4x4x1/4	14'-0"	A500 Gr. B
1		UPPER RAIL	TS 8x4x5/16	16'-0"	A500 Gr. B
1		LOWER RAIL	TS 4x4x1/4	16'-0"	A500 Gr. B
1		UPPER RAIL	TS 8x4x5/16	13'-7/8"	A500 Gr. B
1		LOWER RAIL	TS 4x4x1/4	13'-7/8"	A500 Gr. B
1		UPPER RAIL	TS 8x4x5/16	22'-9-3/8"	A500 Gr. B
1		LOWER RAIL	TS 4x4x1/4	22'-9-3/8"	A500 Gr. B
1		UPPER RAIL	TS 8x4x5/16	23'-7-1/4"	A500 Gr. B
1		LOWER RAIL	TS 4x4x1/4	23'-7-1/4"	A500 Gr. B
* 53		ANCHOR PLATE	3/8 x 9 3/8	1'-1"	A709 Gr. 36
* 212		ANCHOR STUD	1" DIA.	12"	A449
* 424		HEX NUT	1" DIA.	- - -	A563
* 212		JAMB NUT	1" DIA.	- - -	A563
* 212		WASHER	1" DIA.	- - -	F436
212		ROUND HEAD BOLT	3/4" DIA.	6"	M164 TYPE 1
212		HEX NUT	3/4" DIA.	- - -	A563
212		WASHER	3/4" DIA.	- - -	F436
136		SPLICE BOLT	5/8" DIA.	1 3/4"	M164 TYPE 1
136		WASHER	5/8" DIA.	- - -	F436
32		PIPE SPACER (SCH. 40)	3/4" DIA.	1/2"	A53
* 53		BEARING PAD	1/8 x 10	1'-2"	M251

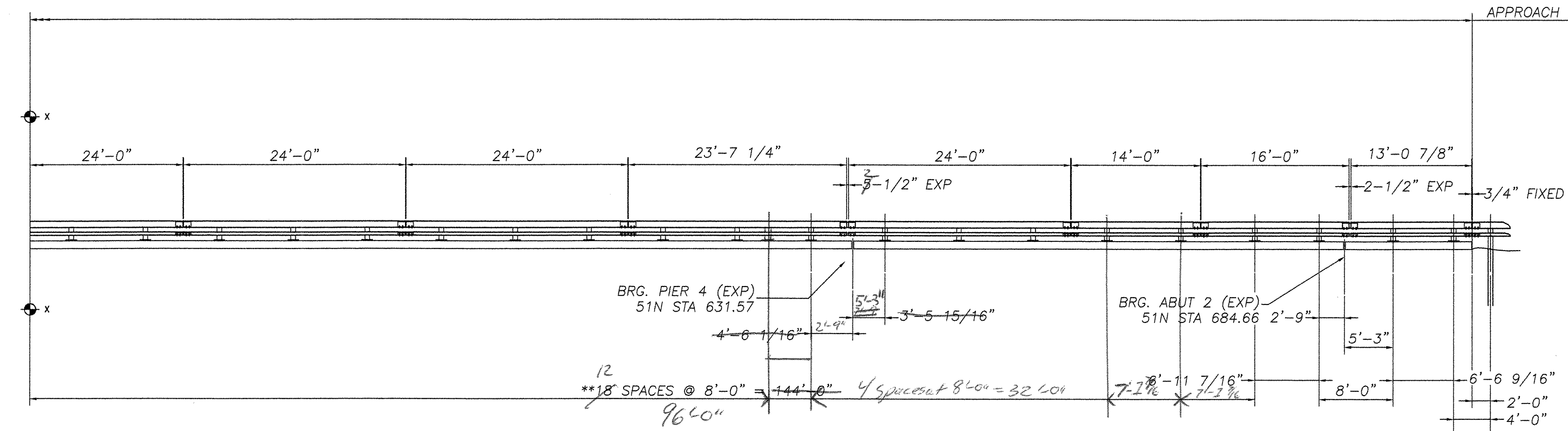
* ANCHORS NOT PROVIDED BY HIGHWAY SAFETY CORP. - SHOWN FOR REFERENCE ONLY.

APPROACH ITEM 621.72

PAY LIMITS ITEM 525.33 403'-1-1/4"



1 ADDITIONAL POST REQUIRED FROM QUANTITY SHOWN IN CONTRACT PLANS TO MAINTAIN 8'-0" MAX POST SPA. AND 2'-9" MIN. SPACING FROM JOINTS



END OF WINGWALLS HAVE BEEN LOCATED APPROXIMATELY BY VAOT SURVEY. CONTRACTOR SHALL VERIFY REQUIRED DIMENSIONS AND RAIL LENGTHS PRIOR TO FABRICATION

1-89 NORTH BOUND SOUTHWEST ELEVATION LOOKING AT FACE OF RAIL FROM C OF ROAD.

REVISIONS		
No.	Remarks	Date
0	Initial submittal	28-JAN-05
0	Re-submittal	09-MAR-05
0	Re-submittal	02-MAY-05
0	Re-submittal	06-MAY-05

TVGA CONSULTANTS

NO EXCEPTIONS TAKEN REJECTED
 FURNISH AS CORRECTED
 ENGINEER HAS REVIEWED SHOP DRAWINGS AND SAMPLES AND OTHER DATA WHICH CONTRACTOR IS REQUIRED TO SUBMIT, ONLY FOR CONFORMANCE WITH THE INFORMATION GIVEN IN THE CONTRACT DOCUMENTS AND COMPATIBILITY WITH THE DESIGN CONCEPT OF THE PROJECT AS A FUNCTIONING WHOLE AS INDICATED IN THE CONTRACT DOCUMENTS. SUCH REVIEWS DO NOT EXTEND TO METHODS, TECHNIQUES, SEQUENCES OR PROCEDURES OF CONSTRUCTION OR TO SAFETY PRECAUTIONS AND PROGRAMS INCIDENT THERETO. CONTRACTOR IS RESPONSIBLE FOR DIMENSIONS TO BE CONFIRMED AND CONTROLLED AT THE JOB SITE, FOR INFORMATION THAT PERTAINS SOLELY TO THE FABRICATION PROCESSES OR TO TECHNIQUES OF CONSTRUCTION; AND FOR COORDINATION OF THE WORK OF ALL TRADES.

BY: *BAC*
 DATE: *5/11/05*



HIGHWAY SAFETY CORP.
 GLASTONBURY, CT

ITEM 525.33 BRIDGE RAILING-NETC 2 RAIL
 TOWN OF BOLTON
 COUNTY OF CHITTENDEN
 PROJECT AC IM 089-2(29)
 BRIDGE 51N&S OVER US ROUTE 2

GENERAL CONTRACTOR: F.R. LAFAYETTE, INC.
 DRAWN: C CRAMER
 CHECKED: []
 DATE: 11-31-04
 SCALE: N.T.S.
 HSC REFERENCE NO.: 1479
 SHEET NO.: 3 of 5

32428