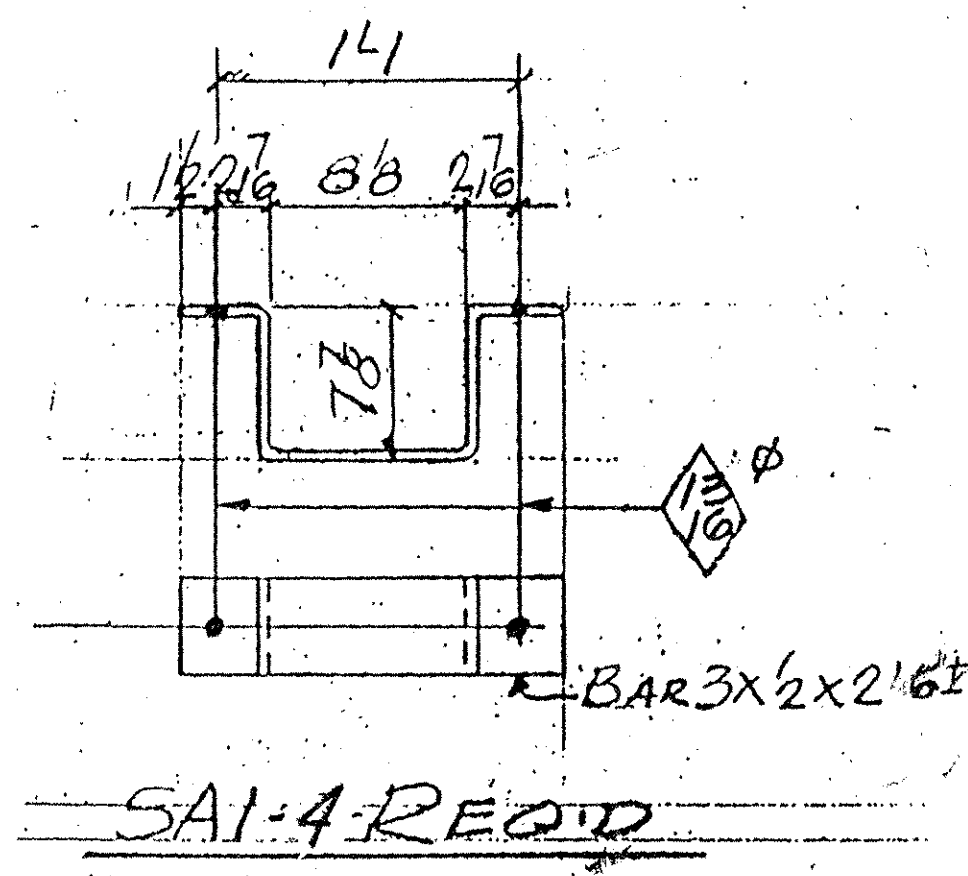
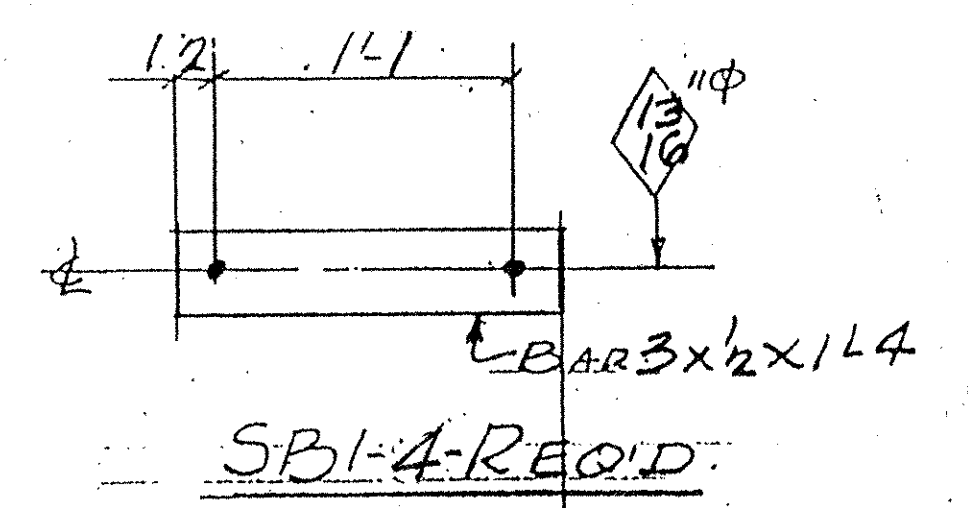
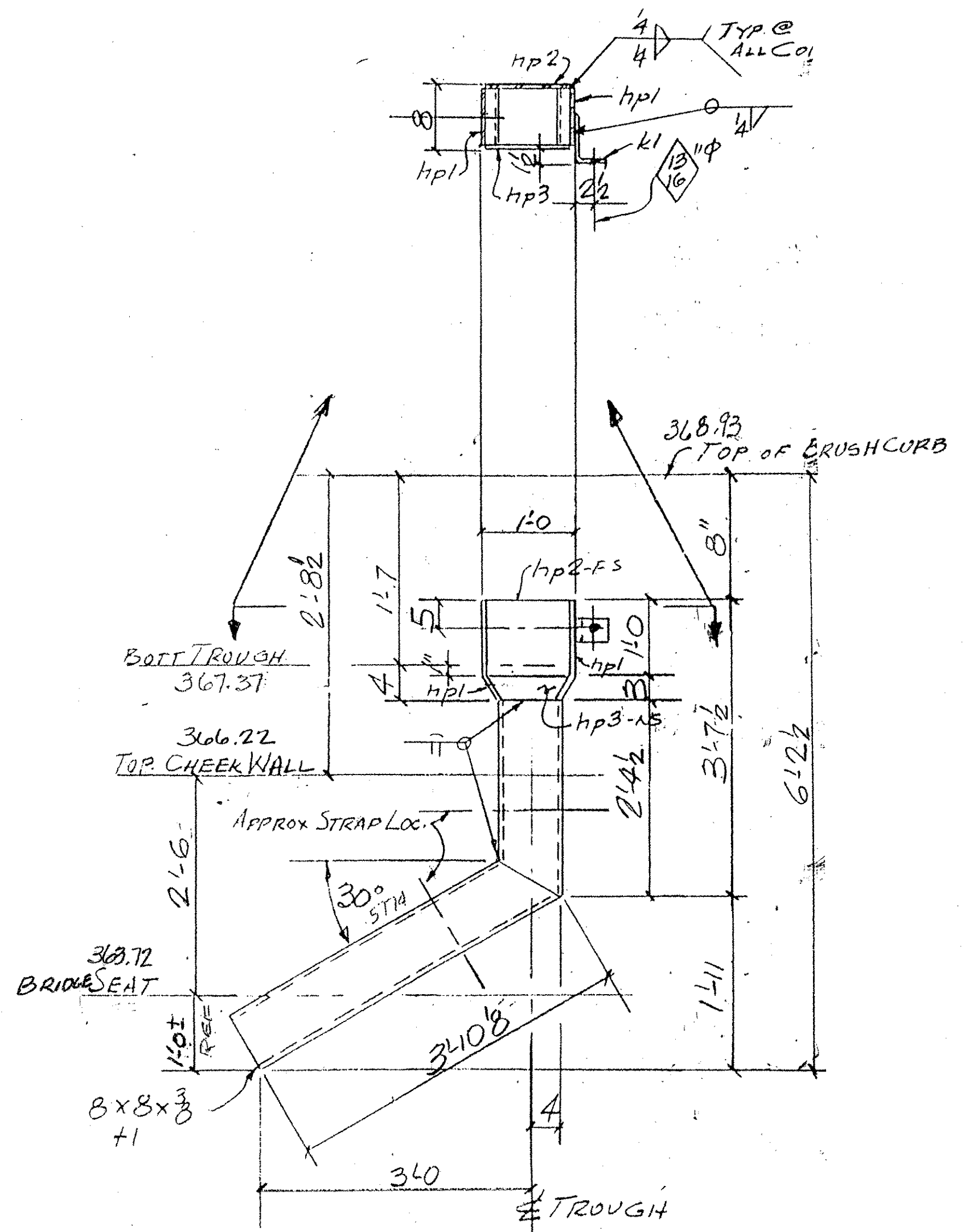


ABM INFO		SHOP BILL				JOB NO.	DRG. NO.		
PAGE	LINE	NO.	DESCRIPTION	FT	IN	ASSEM. MARK	SHIPPING MARK	REMARKS	WEIGHT
	1		DOWNPOUT	5	6 1/2		DS1-S		-
	1		DO	5	6 1/2		DS1-N		-
		2	75 B X B X 3/8	6	0 1/2	F1		ASTM A307 OR A501	
		4	R 3/8 X 14	1	3/8	HP1		BEND	
		2	R 3/8 X 14	1	3	HP2			
		2	R 3/8 X 3		114	HP3			
		2	L 6 X 4 X 2		3	K1			
	4		BAR 3/2	2	6 1/2		SA1	BEND	
	4		DO	1	4		SB1		
	8		5" ANG BOLTS				FIELD	PER NUTS - 2 WASH PER SUB SEC 712.08	
			MULTI, INC. HITTY-150 SYSTEM OR EQUAL						



DS1-S - ONE REQ'D. (@ BRIDGE 51S)
DS1-N - ONE REQ'D. (@ BRIDGE 51N)

PAY ITEM 506.60

TVGA CONSULTANTS
 NO EXCEPTIONS TAKEN REJECTED
 FURNISH AS CORRECTED REVISE AND RESUBMIT
 ENGINEER has reviewed Shop Drawings and Samples and other data which Contractor is required to submit, only for conformance with the information given in the Contract Documents and compatibility with the design concept of the completed Project as a functioning whole as indicated in the Contract Documents. Such reviews do not extend to means, methods, techniques, sequences or procedures of construction or to safety precautions and programs incident thereto. Contractor is responsible for dimensions to be confirmed and correlated at the job site; for information that pertains solely to the fabrication processes or to techniques of construction; and for coordination of the work of all trades.
 BY: BSC
 DATE: 7/26/05

OUT FOR APPROVAL	2-16-05																		
OUT FOR APPROVAL	6-15-05																		
ISSUED TO SHOP																			
FIELD & OFFICE																			
REV.	REMARKS	DATE	DMN	CHK	APP	Q.A.	NO.	DIA.	LGT	TYPE	WASHER								
PROJECT NO. <u>IM-089-2(29)</u> STATE PROJECT NO.																			
MATERIAL: <u>ASTM A307</u> ELECTRODES: <u>PER PROC</u> HOLES: <u>1 3/16"</u> SHOP BOLTS:																			
SURFACE PREP. & PAINT:																			
<u>GALVANIZED AFTER FAB. (ASTM-123)</u>																			
DESCRIPTION: <u>DOWNPOUTS - ABUT. 2</u>												DRAWN BY		DATE					
JOB: <u>BRIDGE 51S @ 51N</u>												JPF		2-05					
<u>I 89 OVER U.S. ROUTE 2</u>												CHKD BY							
<u>BOLTON, VT.</u>												EJ.							
												APPROV BY							
												Q.A.							
CUSTOMER: <u>WINTERSET INC.</u>																			
CASCO BAY STEEL STRUCTURES, INC.												JOB NO.		DRG. NO.					
75 SPRING HILL ROAD SACO, MAINE 04072												253		DS2					
PHONE (207) 282-7360 FAX. (207) 282-1179												BS420		REV. <u>Δ</u>					