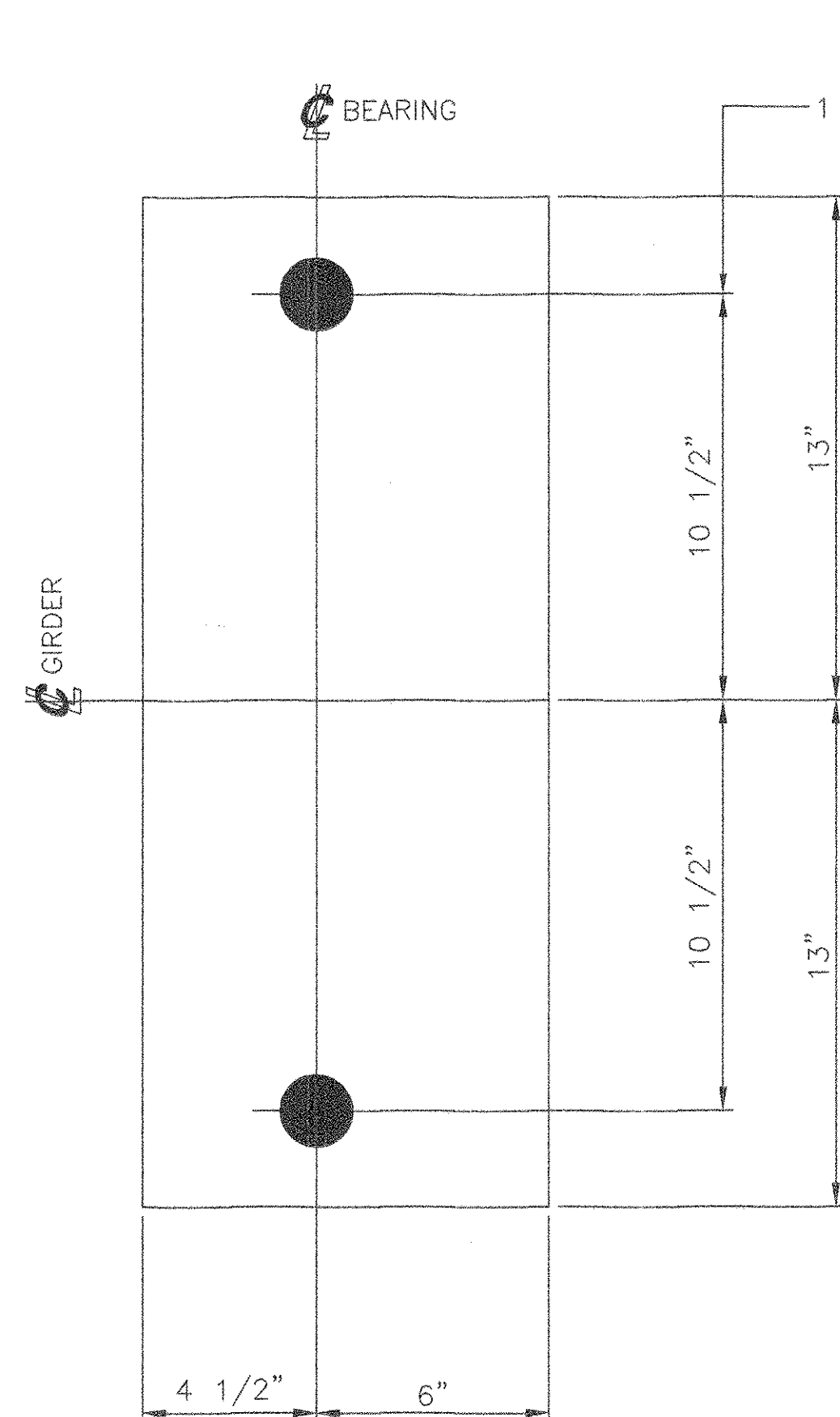
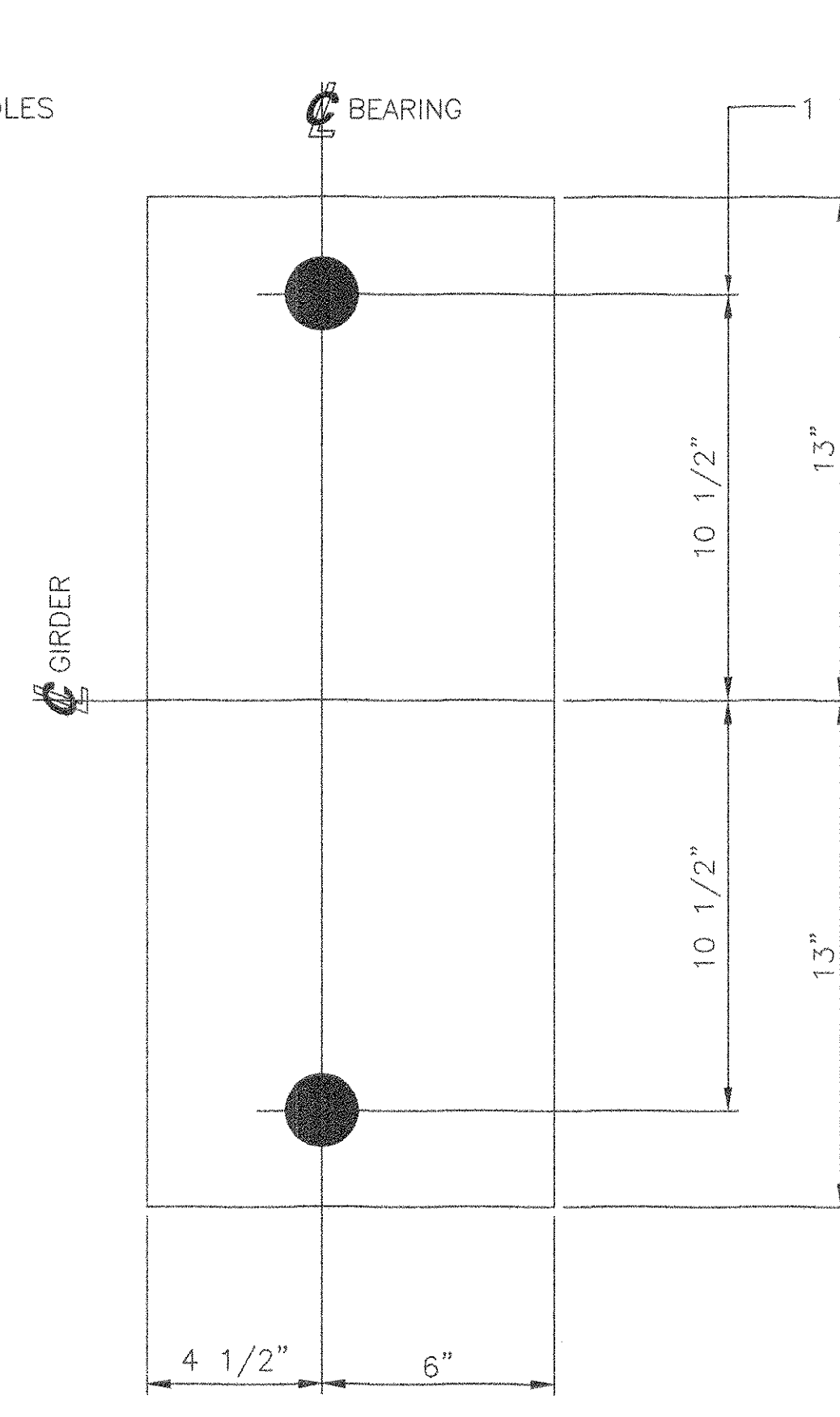


MARK	QTY	DESCRIPTION	FT	IN	16ths	FAB MARK	MILL MARK	WEIGHT
BP4	10	PREFORMED PAD 1/8"x 10 1/2"	-	26	0	-	-	18
BP5	10	PREFORMED PAD 1/8"x 10 1/2"	-	26	0	-	-	18
BP6	10	PREFORMED PAD 1/8"x 11"	-	29	0	-	-	21
BP7	10	PREFORMED PAD 1/8"x 15"	-	27	8	-	-	27
BP8	15	PREFORMED PAD 1/8"x 14"	-	29	8	-	-	39

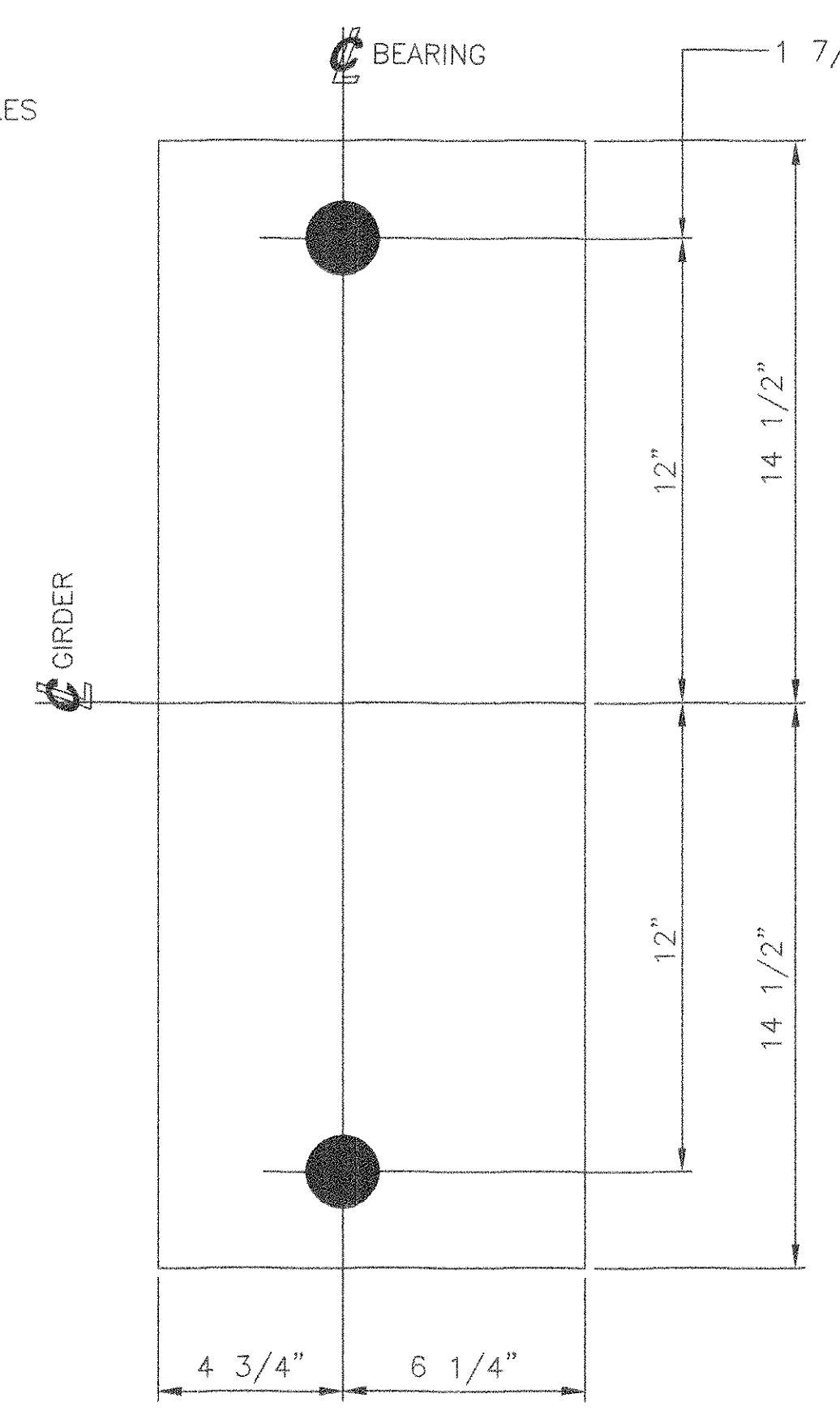
TOTAL GROSS WT = 123



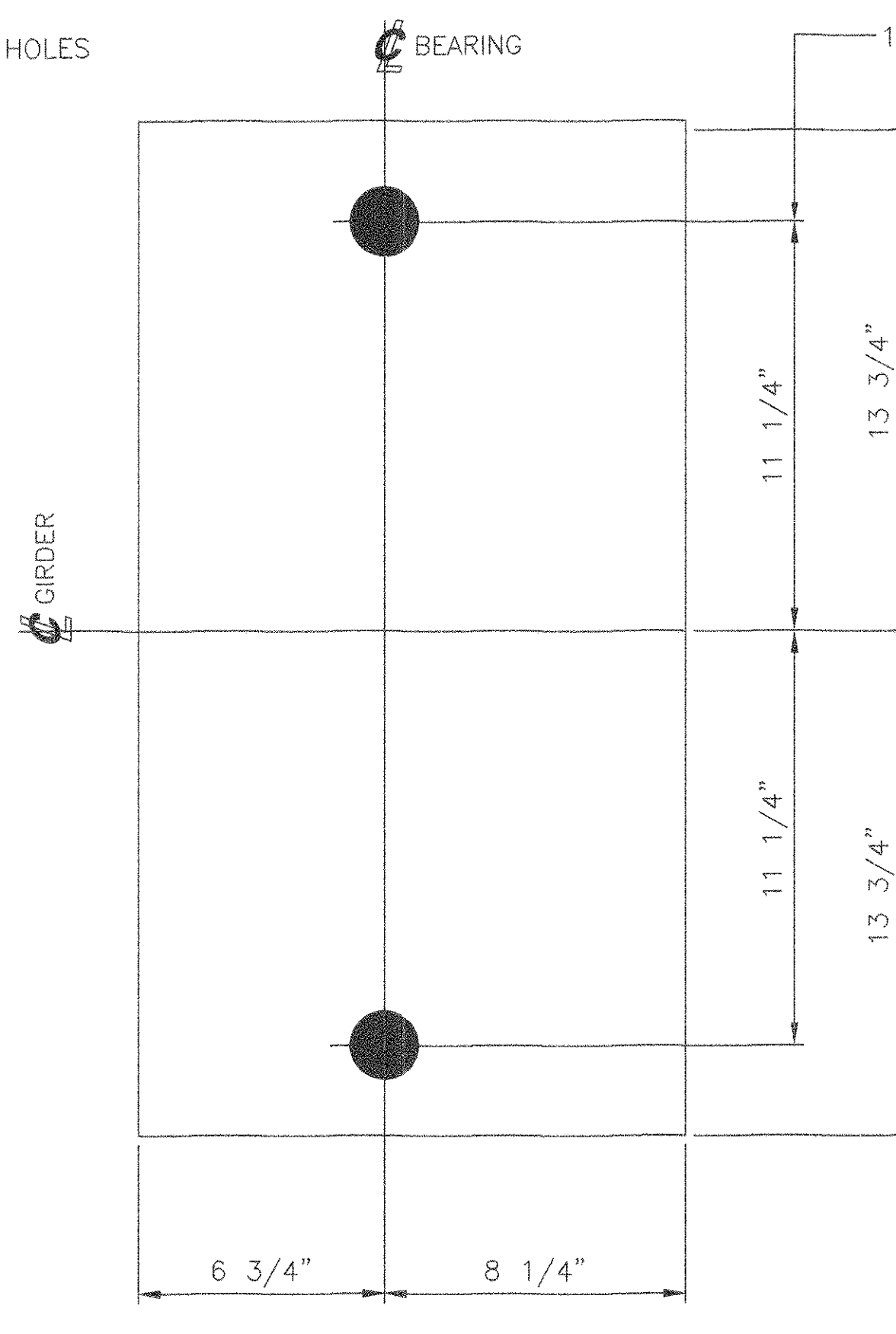
10 PREFORMED BEARING PADS, BP4
 1/8" x 10 1/2" x 26"
 MATERIAL SHALL BE IN ACCORDANCE WITH
 AASHTO 18.4.9.1, DIV. 2
 LOCATE AT
 BRIDGE NO. 51N, ABUT. 2
 BRIDGE NO. 51S, ABUT. 2



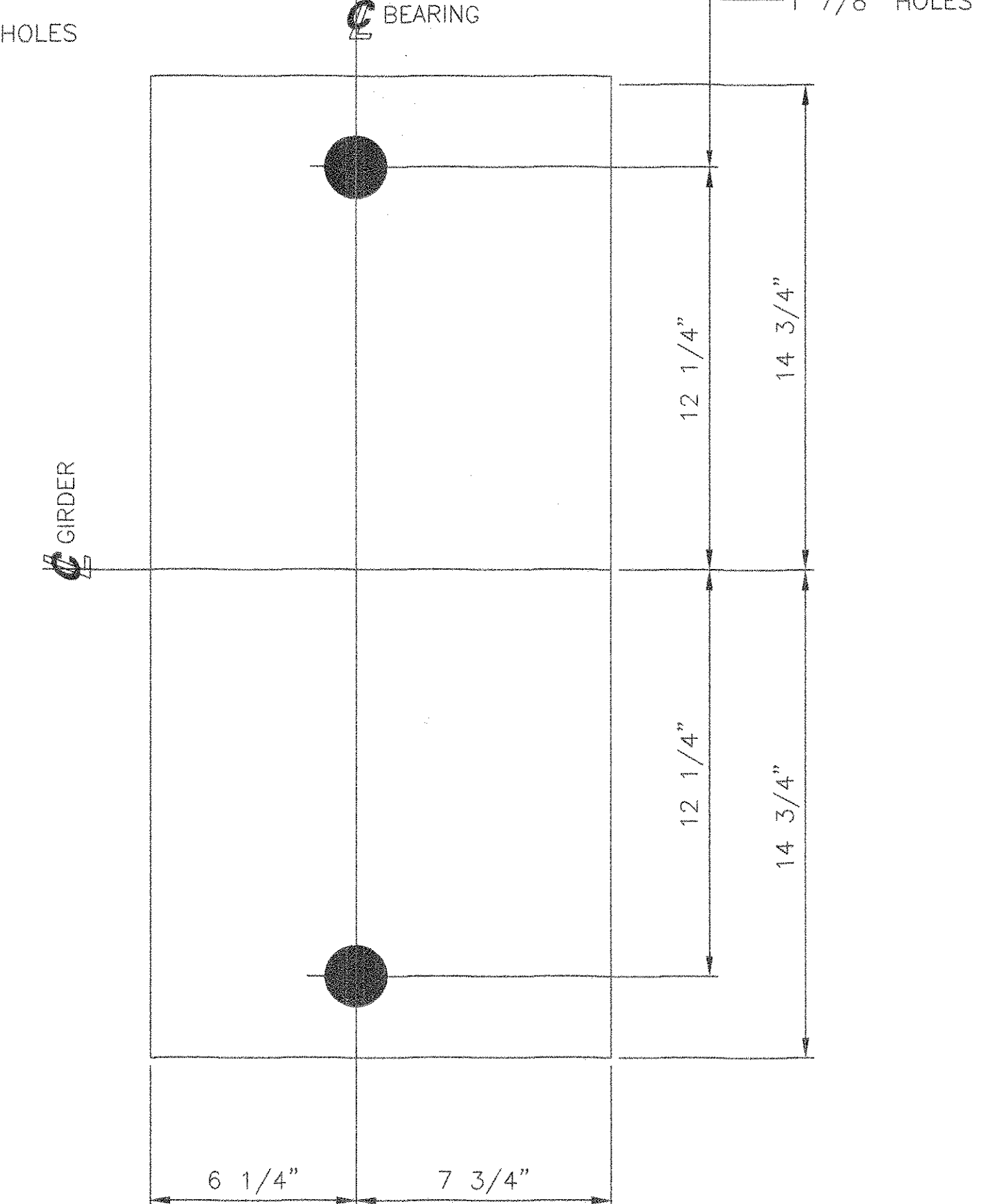
10 PREFORMED BEARING PADS, BP5
 1/8" x 10 1/2" x 26"
 MATERIAL SHALL BE IN ACCORDANCE WITH
 AASHTO 18.4.9.1, DIV. 2
 LOCATE AT
 BRIDGE NO. 51N, PIER 1(S1)
 BRIDGE NO. 51S, PIER 1(S1)



10 PREFORMED BEARING PADS, BP6
 1/8" x 11" x 29"
 MATERIAL SHALL BE IN ACCORDANCE WITH
 AASHTO 18.4.9.1, DIV. 2
 LOCATE AT
 BRIDGE NO. 51N, PIER 1(S2)
 BRIDGE NO. 51S, PIER 1(S2)



10 PREFORMED BEARING PADS, BP7
 1/8" x 15" x 27 1/2"
 SHALL BE IN ACCORDANCE WITH
 AASHTO 18.4.9.1, DIV. 2
 LOCATE AT
 BRIDGE NO. 51N, PIER 3
 BRIDGE NO. 51S, PIER 2



15 PREFORMED BEARING PADS, BP8
 1/8" x 14" x 29 1/2"
 SHALL BE IN ACCORDANCE WITH
 AASHTO 18.4.9.1, DIV. 2
 LOCATE AT
 BRIDGE NO. 51N, PIER 4
 BRIDGE NO. 51S, PIER 4
 BRIDGE NO. 51S, PIER 5

TVGA CONSULTANTS

NO EXCEPTIONS TAKEN REJECTED
 FURNISH AS CORRECTED
 REVISE AND RESUBMIT
 ENGINEER has reviewed Shop Drawings and Samples and other data which Contractor is required to submit, only for conformance with the information given in the Contract Documents and compatibility with the design concept of the completed Project as a functioning whole as indicated in the Contract Documents. Such review is not intended to insure, methods, techniques, sequences or procedures of construction or to safety precautions and programs incident thereto. Contractor is responsible for dimensions to be confirmed and correlated at the job site; for information that pertains solely to the fabrication processes or to techniques of construction; and for coordination of the work of all trades.
 BY: BD
 DATE: 7.13.08

SEE SHEET AS1 FOR ASSEMBLY NOTES.
 SEE SHEET 1 FOR SHOP NOTES.

STATE OF VERMONT
 AGENCY OF TRANSPORTATION
 TOWN OF BOLTON
 PROJECT NO.: IM-089-2 (29)
 BRIDGE NO.'S 51N AND 51S
 ON INTERSTATE 89

COSMEC, INC. 70 SOUTH STREET
 WALPOLE, MA. 02081

SCALE: 1/4"=1" DRAWN BY: JEP CHECKED BY: PJM
 SHT 12 OF 12 DATE: 01/05 DATE: 02/05

COSMEC BEARING **66326**

CUSTOMER: WINTERSET S.O. NUMBER: 60233 DRAWING NUMBER: 4371 REV. 0

REV.	BY	DATE	CK'D BY	DATE
-	-	-	-	-