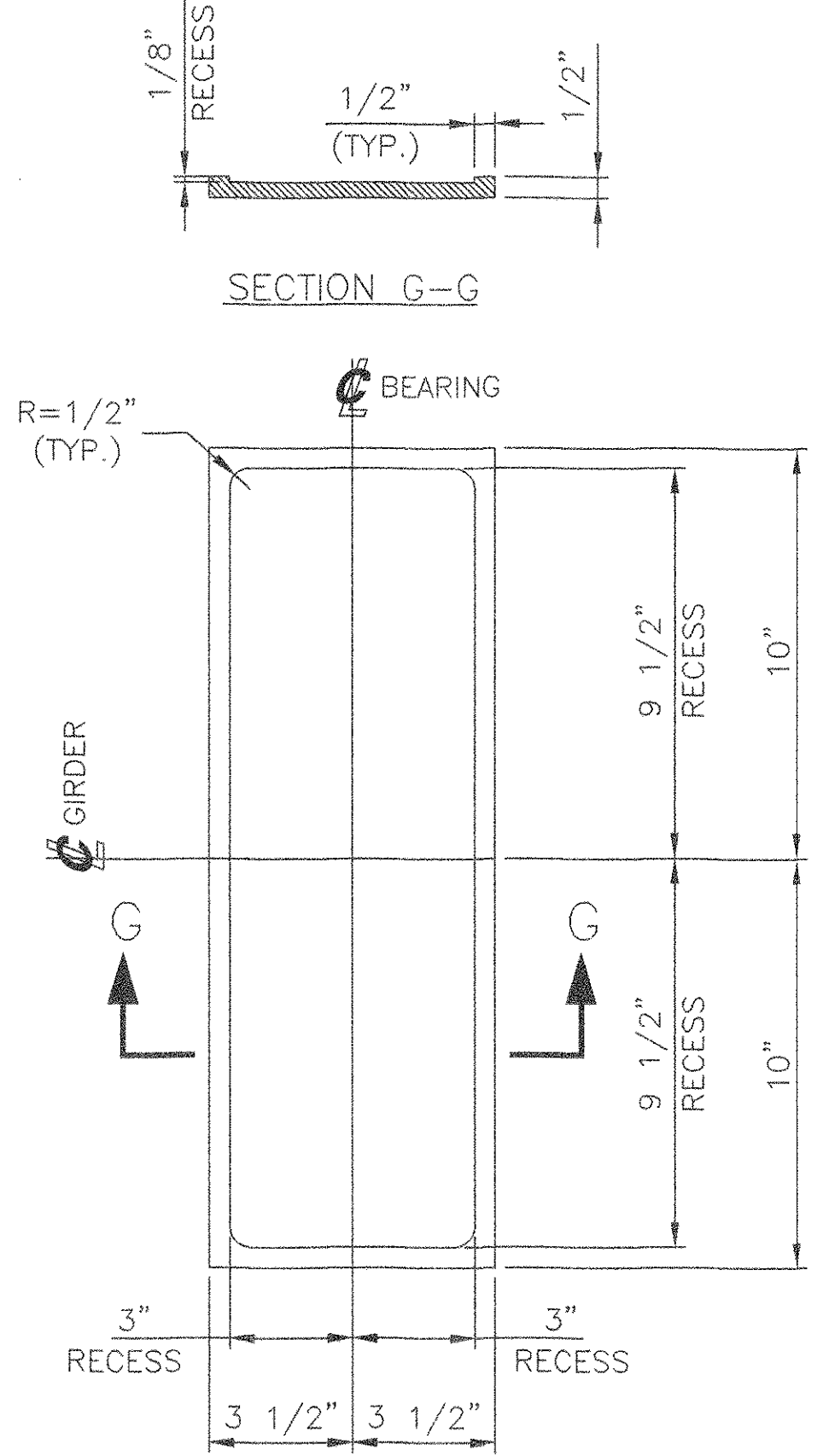
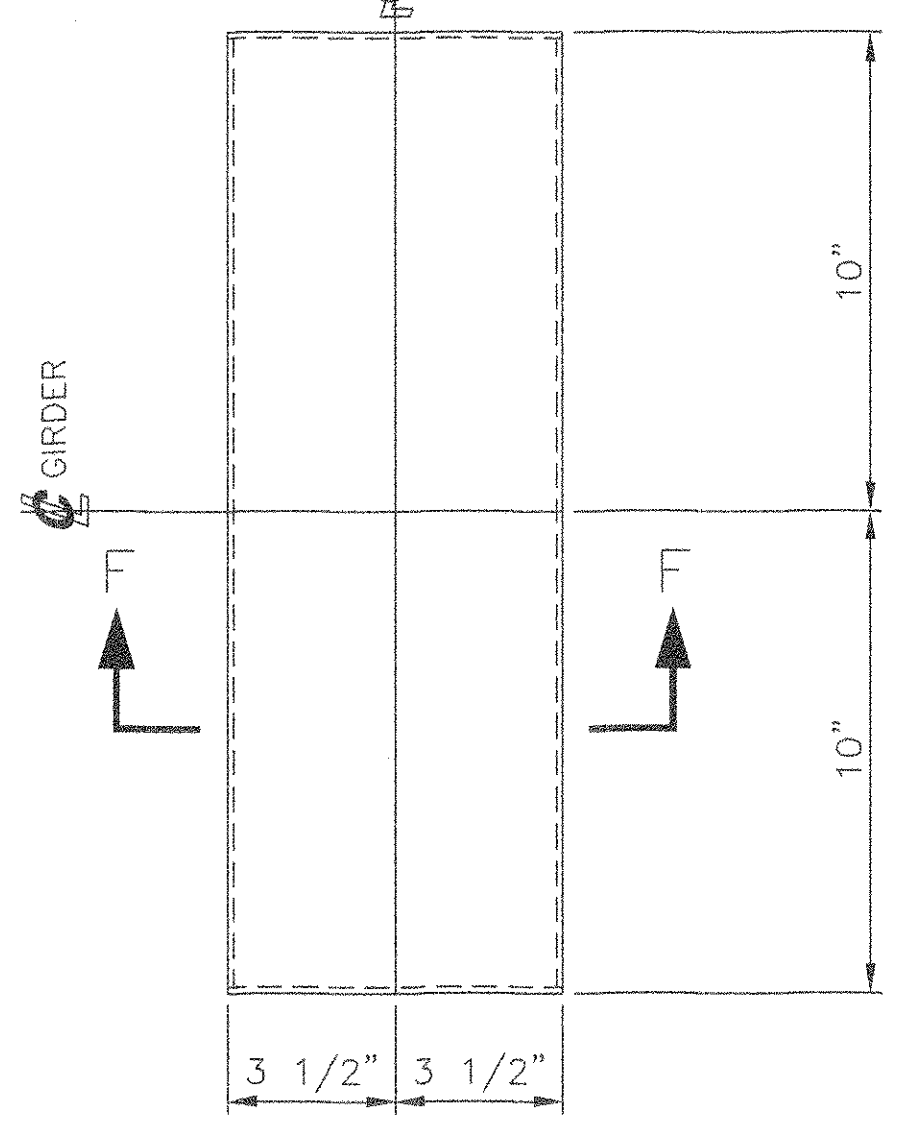
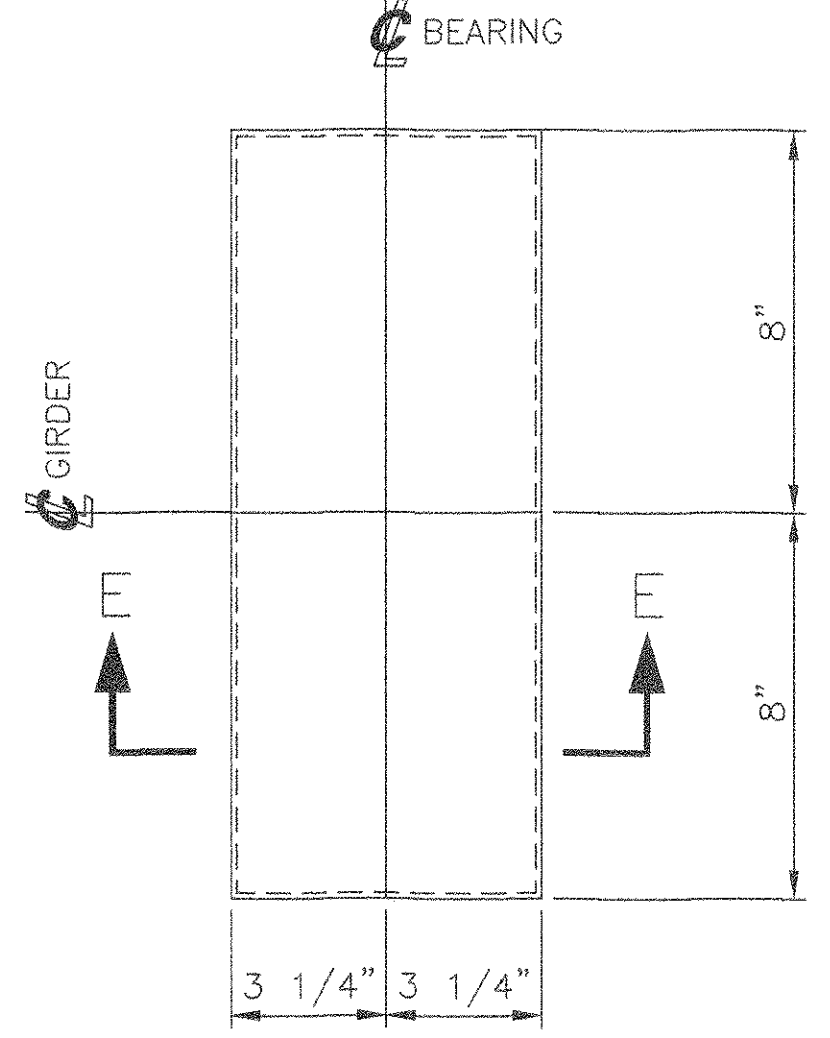
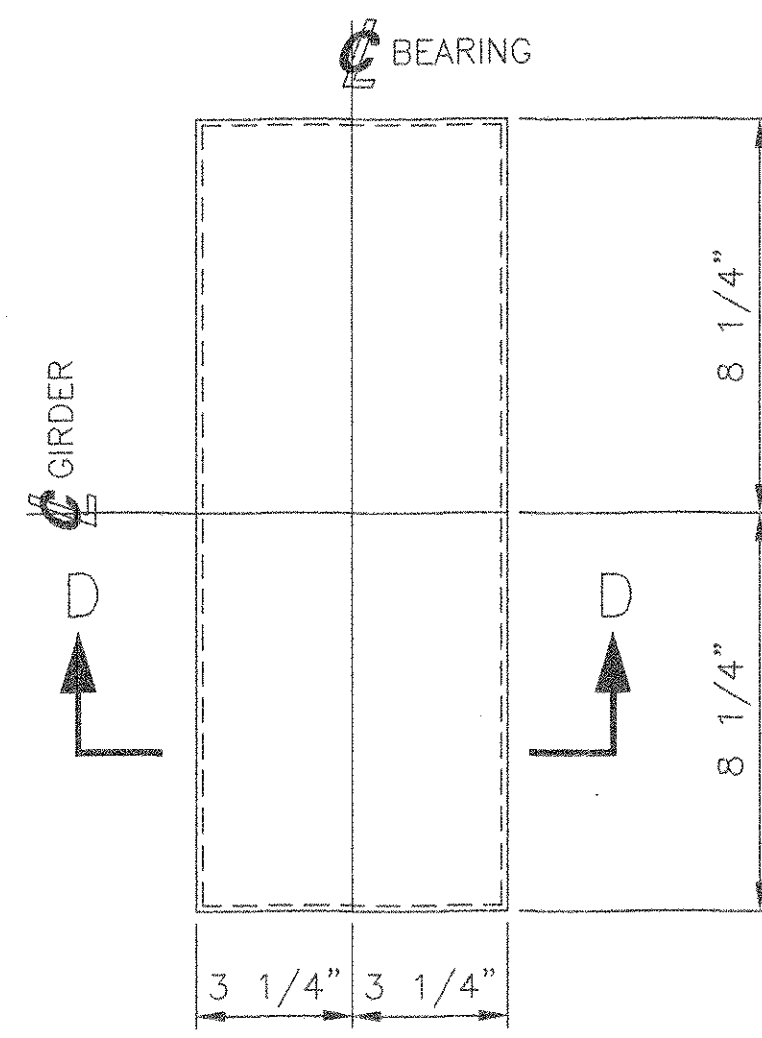


MARK	QTY	DESCRIPTION	FT	IN	16ths	FAB MARK	MILL MARK	WEIGHT
EB4	10	LAM. ELAST. PAD 2 1/4" x 6 1/2"		16	8		60 DURO. OR 4 NAT. RUBBER	238
	10	STAINLESS PL 1/2" x 6 1/2"		16	8	ss9a	A240 TYPE 304	167
	10	PTFE 1/4" x 5 1/2"		15	8	tfe9a	D1457	60
EB5	10	LAM. ELAST. PAD 3 1/4" x 6 1/2"		16	0		60 DURO. OR 4 NAT. RUBBER	339
	10	STAINLESS PL 1/2" x 6 1/2"		16	0	ss9b	A240 TYPE 304	162
	10	PTFE 1/4" x 5 1/2"		15	0	tfe9b	D1457	58
EB6	10	LAM. ELAST. PAD 2 1/8" x 7"		20	0		60 DURO. OR 4 NAT. RUBBER	264
	10	STAINLESS PL 1/2" x 7"		20	0	ss9c	A240 TYPE 304	219
	10	PTFE 1/4" x 6"		19	0	tfe9c	D1457	81

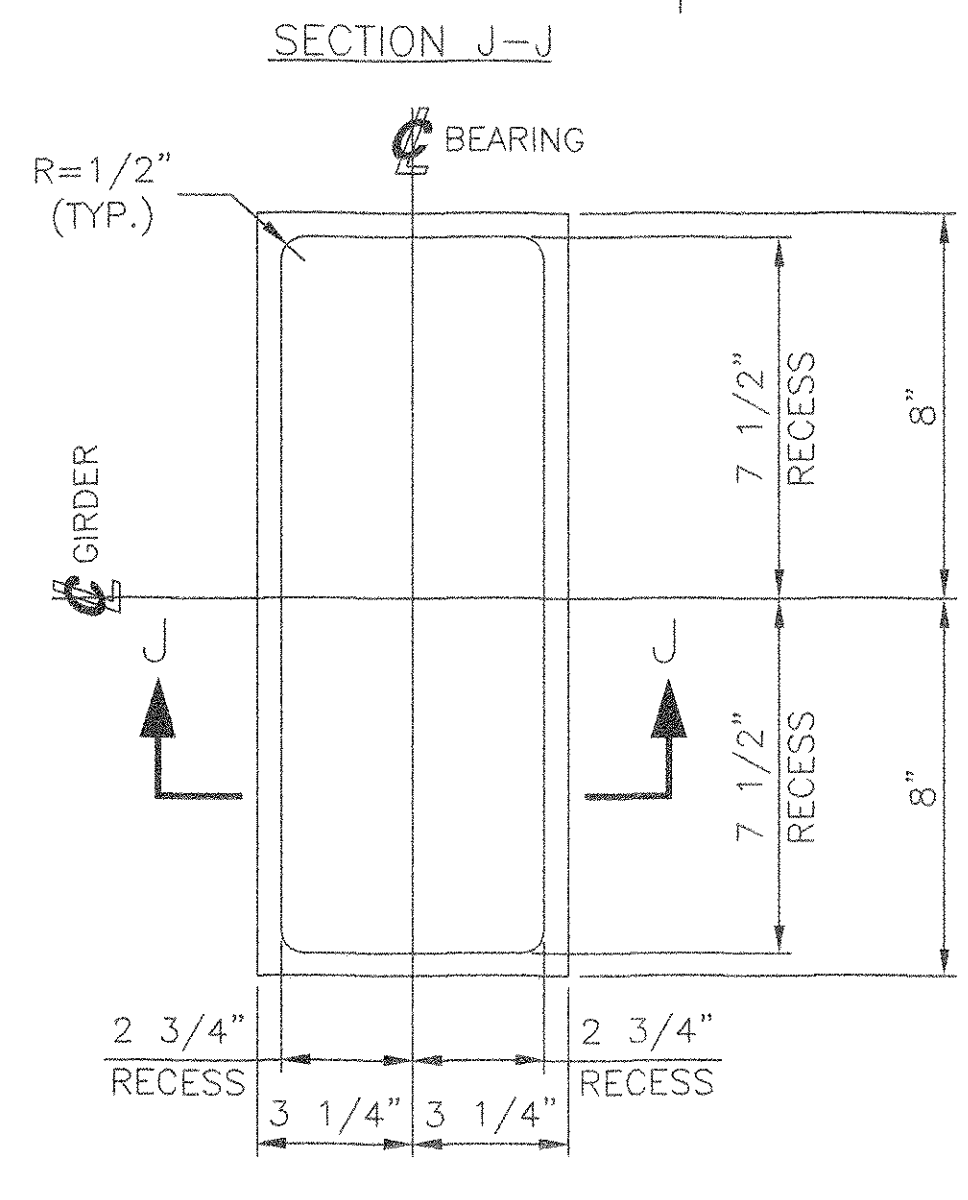
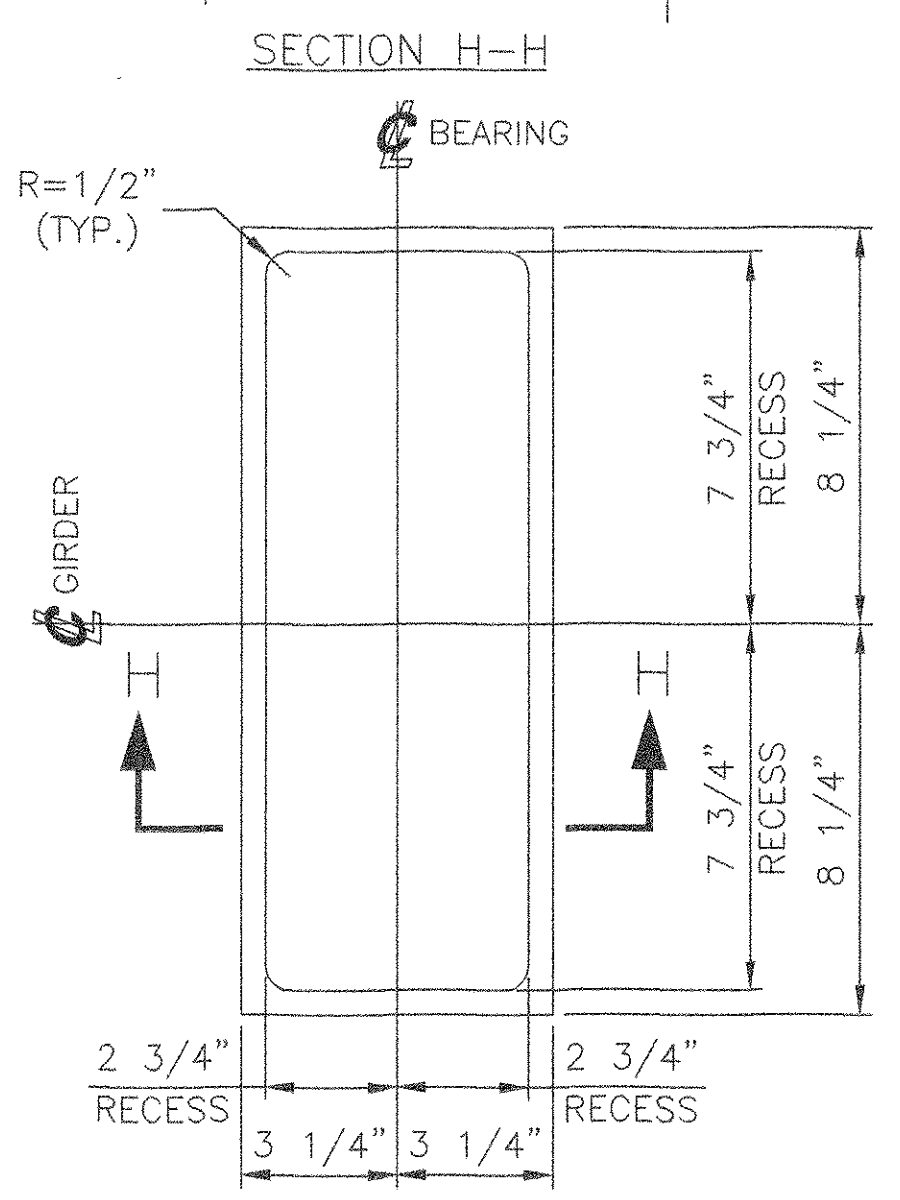
TOTAL GROSS WT = 1588



10 ELASTOMERIC BEARINGS, EB4
 LAMINATED ELASTOMERIC BEARINGS CONFORMING TO VTDOT STANDARD SPECIFICATIONS
 ELASTOMERIC BEARING 2 1/4" X 6 1/2" X 16 1/2"
 ELASTOMER - 60 DUROMETER, GRADE 4 NATURAL RUBBER
 SHIM PLATES - M270 GR.36 (PLAIN) Δ
 LOCATE AT
 BRIDGE 51N, ABUT. 2
 BRIDGE 51S, ABUT. 2

10 ELASTOMERIC BEARINGS, EB5
 LAMINATED ELASTOMERIC BEARINGS CONFORMING TO VTDOT STANDARD SPECIFICATIONS
 ELASTOMERIC BEARING 3 1/4" X 6 1/2" X 16"
 ELASTOMER - 60 DUROMETER, GRADE 4 NATURAL RUBBER
 SHIM PLATES - M270 GR.36 (PLAIN) Δ
 LOCATE AT
 BRIDGE 51N, PIER 1(S1)
 BRIDGE 51S, PIER 1(S1)

10 ELASTOMERIC BEARING, EB6
 LAMINATED ELASTOMERIC BEARINGS CONFORMING TO VTDOT STANDARD SPECIFICATIONS
 ELASTOMERIC BEARING 2 1/8" X 7" X 20"
 ELASTOMER - 60 DUROMETER, GRADE 4 NATURAL RUBBER Δ
 SHIM PLATES - M270 GR.36 (PLAIN)
 LOCATE AT
 BRIDGE 51N, PIER 1(S2)
 BRIDGE 51S, PIER 1(S2)



10 STAINLESS STEEL PLATES, SS9a
 PL 1/2" x 6 1/2" x 16 1/2"
 ASTM A240 TYPE 304
 USE WITH EB4

10 STAINLESS STEEL PLATES, SS9b
 PL 1/2" x 6 1/2" x 16"
 ASTM A240 TYPE 304
 USE WITH EB5

10 STAINLESS STEEL PLATES, SS9c
 PL 1/2" x 7" x 20"
 ASTM A240 TYPE 304
 USE WITH EB6

SEE SHEET AS1 FOR ASSEMBLY NOTES.
 SEE SHEET 1 FOR SHOP NOTES.

TPOA CONSULTANTS
 NO EXCEPTIONS TAKEN
 IF FURNISH AS CORRECTED
 IF REVISE AND RESUBMIT
 ENGINEER has reviewed Shop Drawings and Samples and certifies that Contractor is required to submit bids for performance with the information given in the Contract Documents and compliance with the design content of the completed Project as a condition which is indicated in the Contract Documents. Such reviews do not extend to means, methods, techniques, equipment or procedures of construction or to safety precautions and programs incident thereto. Contractor is responsible for dimensions to be confirmed and correlated at the job site for information that pertains solely to the fabrication processes or to techniques of construction and for coordination of the work of all trades.

BY: *[Signature]*
 DATE: 1/12/05

STATE OF VERMONT
 AGENCY OF TRANSPORTATION
 TOWN OF BOLTON
 PROJECT NO.: IM-089-2 (29)
 BRIDGE NO.'S 51N AND 51S
 ON INTERSTATE 89

COSMEC, INC. 70 SOUTH STREET
 WALPOLE, MA. 02081

SCALE: 1/4" = 1"	DRAWN BY: JEP	CHECKED BY: PJM
SHT 9 OF 12	DATE: 01/05	DATE: 02/05
COSMEC BEARING bb323		
CUSTOMER: WINTERSET	S.O. NUMBER: 60233	DRAWING NUMBER: 4368
		REV: 1

REV: Δ NATURAL RUBBER WAS NEOPRENE	BY: MM	DATE: 4/05	CHK'D BY:	DATE:
---	--------	------------	-----------	-------