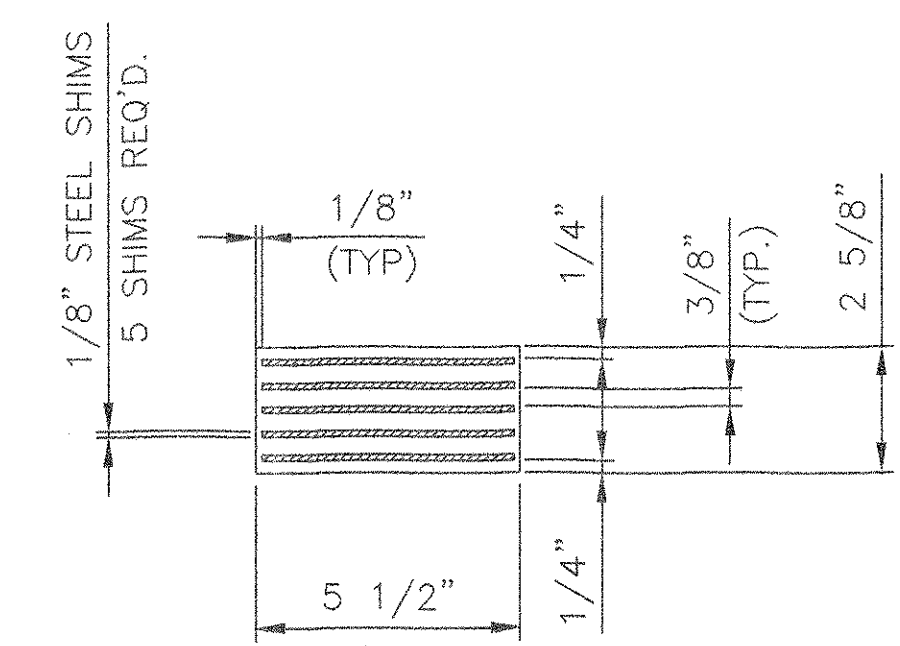
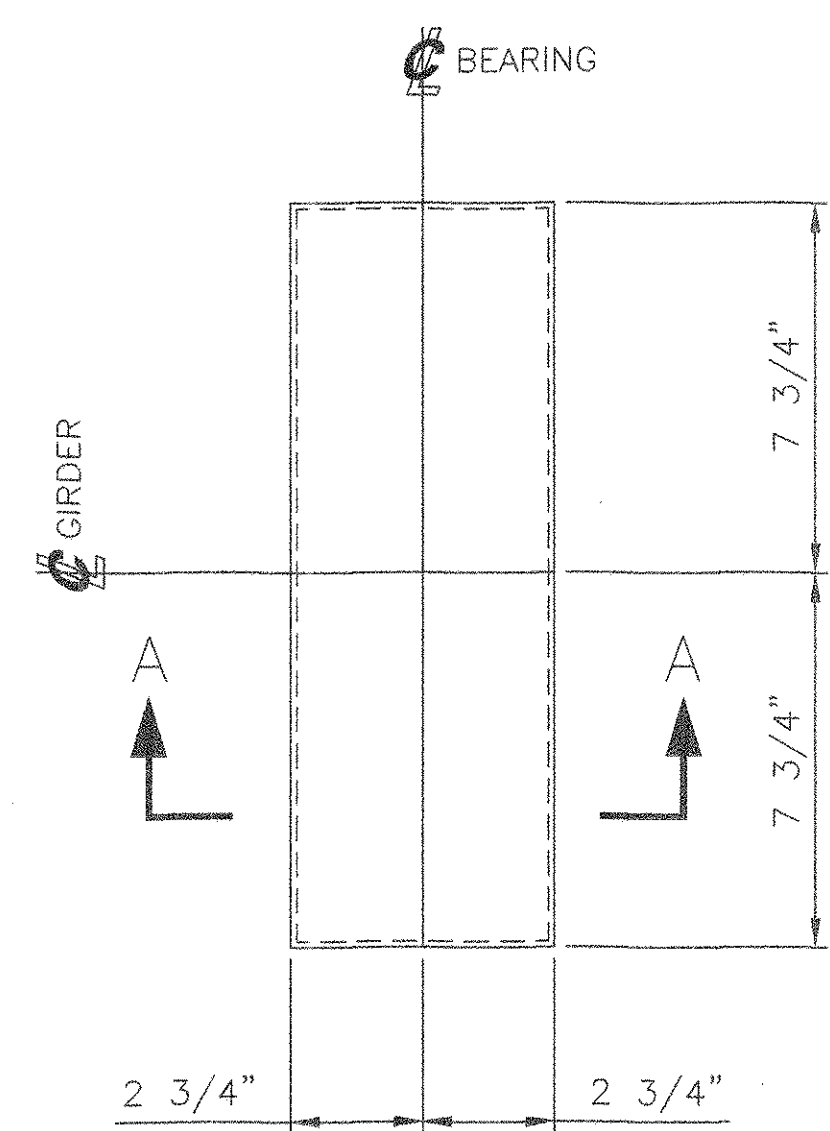


MARK	QTY	DESCRIPTION	FT	IN	16ths	FAB MARK	MILL MARK	WEIGHT
△ EB1	10	LAM. ELAST. PAD 2 5/8" x 5 1/2"	-	15	8	-	60 DURO. GR.4 NAT. RUBBER	227
△ EB2	5	LAM. ELAST. PAD 2 7/8" x 11"	-	18	8	-	60 DURO. GR.4 NAT. RUBBER	260
△ EB3	5	LAM. ELAST. PAD 5 1/8" x 10"	-	20	8	-	60 DURO. GR.4 NAT. RUBBER	482

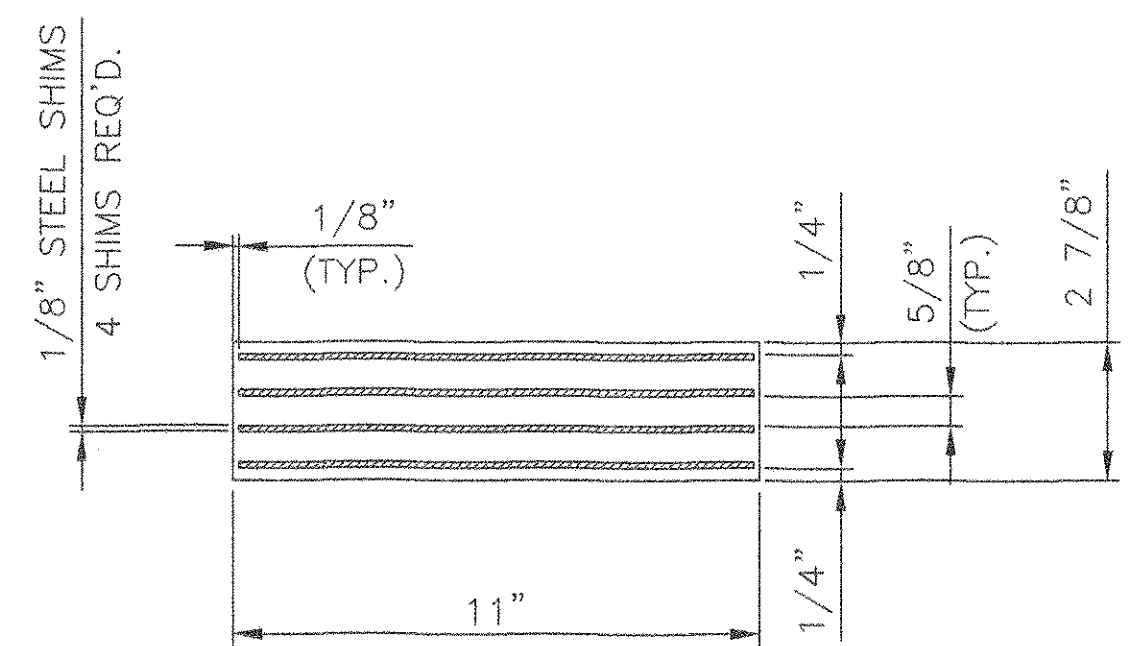
TOTAL GROSS WT = 969



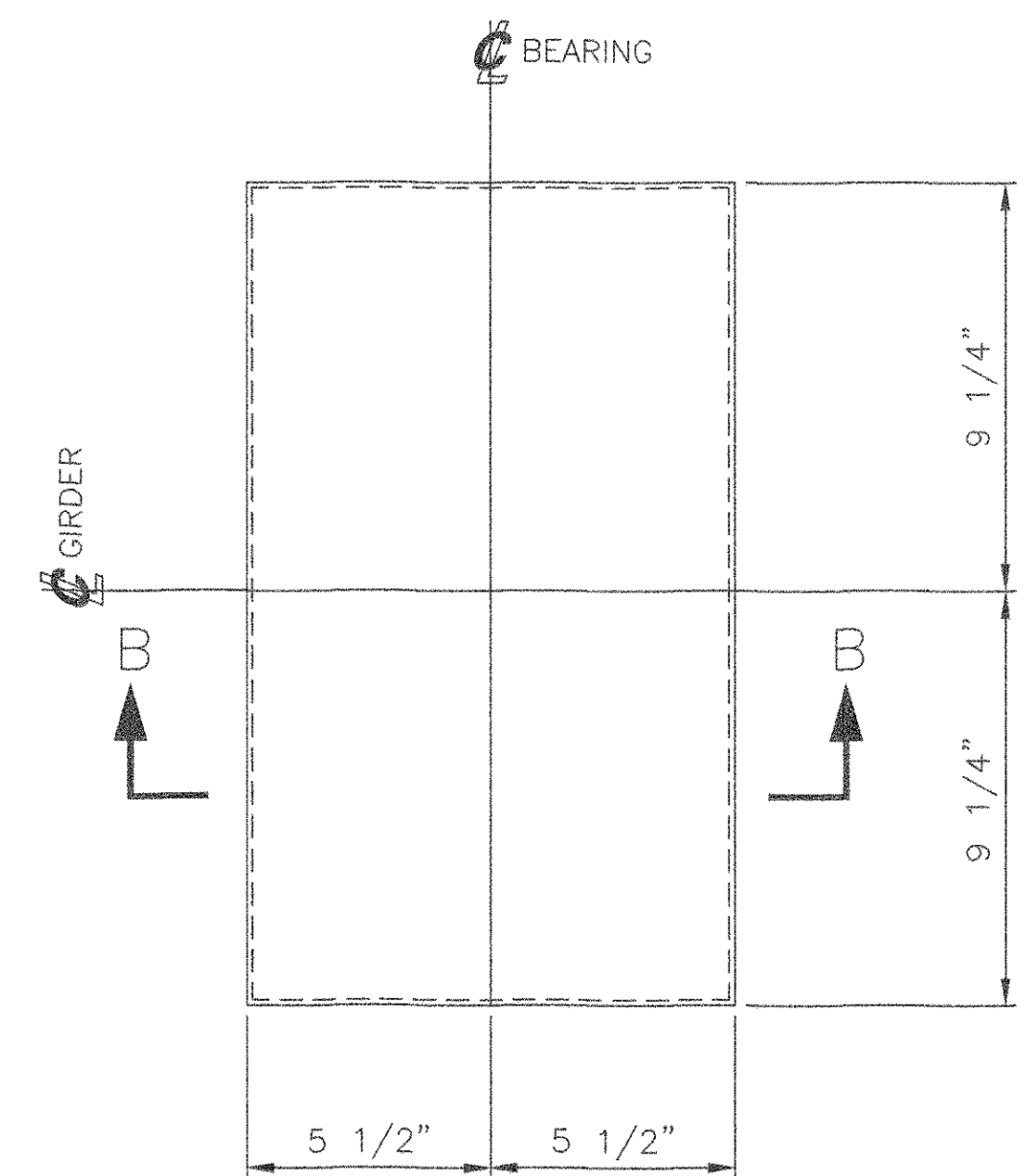
SECTION A-A



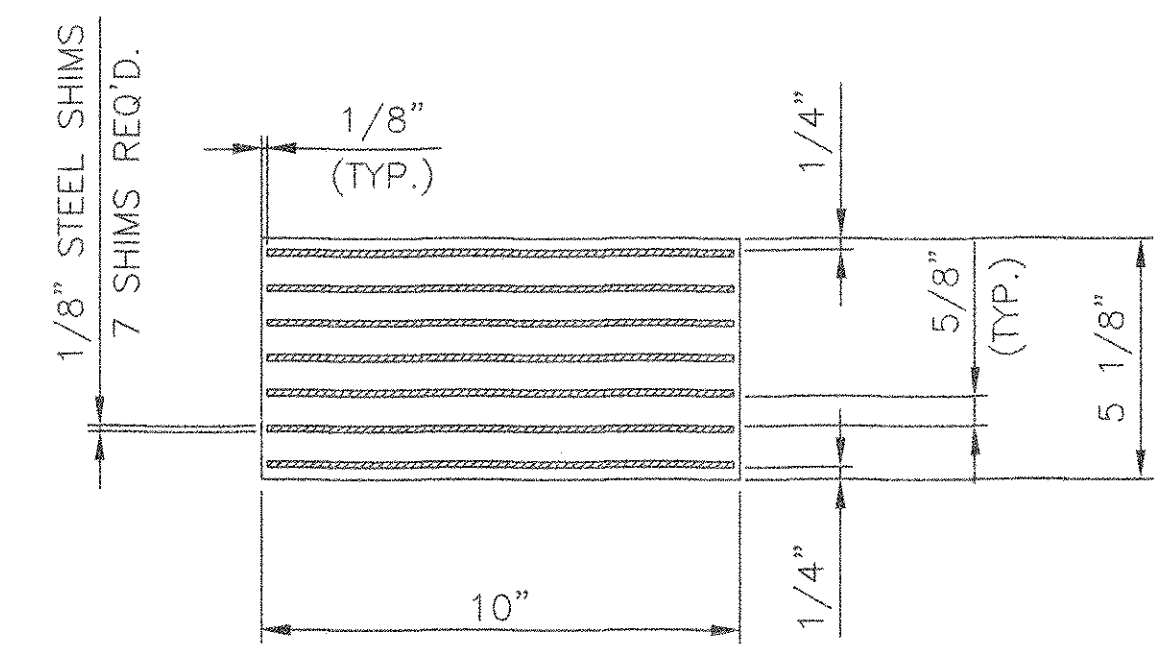
10 ELASTOMERIC BEARINGS, EB1
 LAMINATED ELASTOMERIC BEARINGS CONFORMING TO
 VTDOT STANDARD SPECIFICATIONS
 ELASTOMERIC BEARING 2 5/8" X 5 1/2" X 15 1/2"
 ELASTOMER - 60 DUROMETER, GRADE 4 NATURAL RUBBER △
 SHIM PLATES - M270 GR.36 (PLAIN)
 LOCATE AT
 BRIDGE NO. 51N, ABUT. 1
 BRIDGE NO. 51S, ABUT. 1



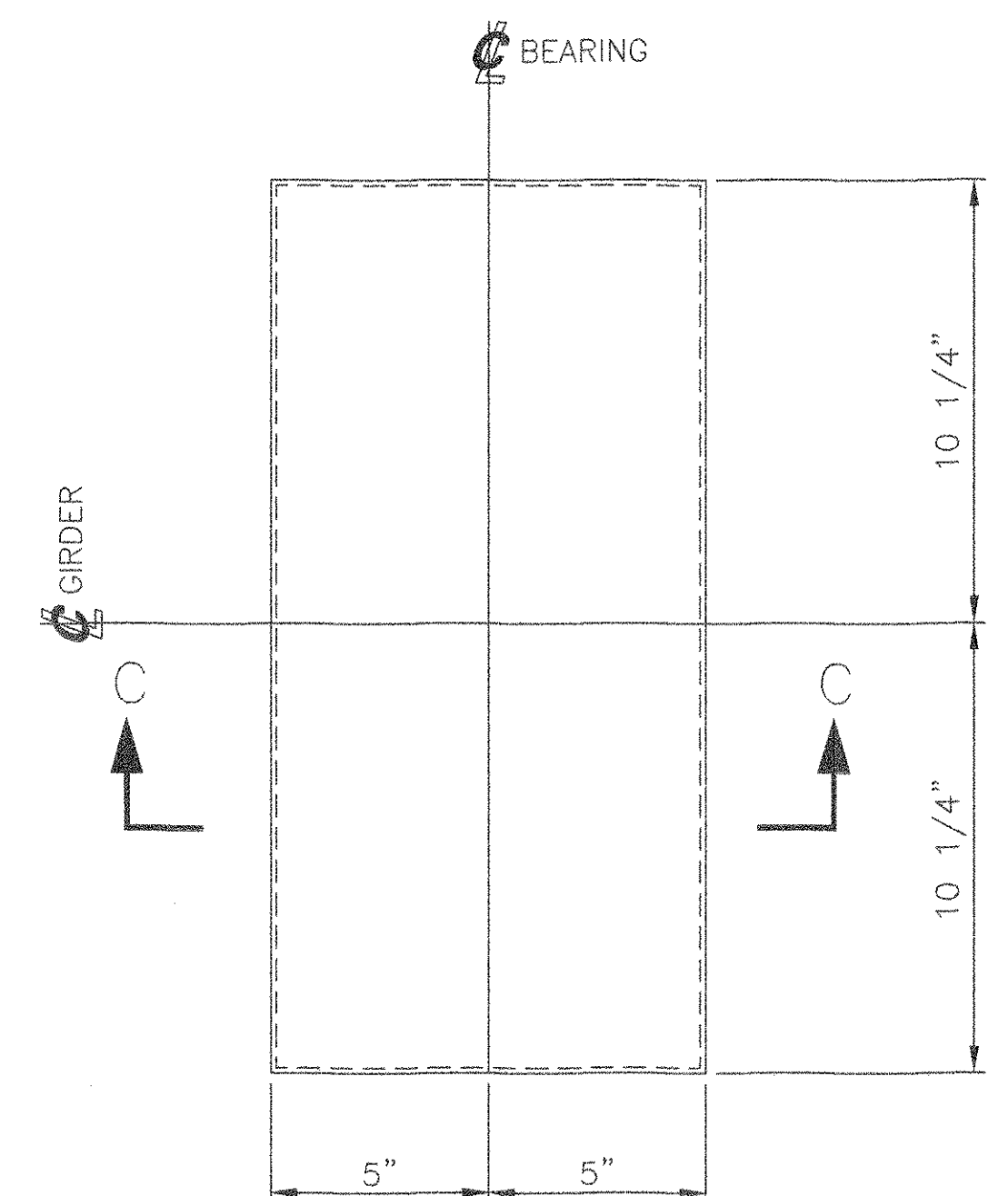
SECTION B-B



5 ELASTOMERIC BEARING, EB2
 LAMINATED ELASTOMERIC BEARINGS CONFORMING TO
 VTDOT STANDARD SPECIFICATIONS
 ELASTOMERIC BEARING 2 7/8" X 11" X 18 1/2"
 ELASTOMER - 60 DUROMETER, GRADE 4 NATURAL RUBBER △
 SHIM PLATES - M270 GR.36 (PLAIN)
 LOCATE AT
 BRIDGE 51N, PIER 2



SECTION C-C



5 ELASTOMERIC BEARING, EB3
 LAMINATED ELASTOMERIC BEARINGS CONFORMING TO
 VTDOT STANDARD SPECIFICATIONS
 ELASTOMERIC BEARING 5 1/8" X 10" X 20 1/2"
 ELASTOMER - 60 DUROMETER, GRADE 4 NATURAL RUBBER △
 SHIM PLATES - M270 GR.36 (PLAIN)
 LOCATE AT
 BRIDGE 51S, PIER 3

SEE SHEET AS1 FOR ASSEMBLY NOTES.
 SEE SHEET 1 FOR SHOP NOTES.

STATE OF VERMONT
 AGENCY OF TRANSPORTATION
 TOWN OF BOLTON
 PROJECT NO.: IM-089-2 (29)
 BRIDGE NO.'S 51N AND 51S
 ON INTERSTATE 89

COSMEC, INC. 70 SOUTH STREET
 WALPOLE, MA. 02081

SCALE: 1/4" = 1" DRAWN BY: JEP CHECKED BY: PJM
 SHT 8 OF 12 DATE: 01/05 DATE: 02/05

COSMEC BEARING bb322

CUSTOMER: WINTERSET S.O. NUMBER: 60233 DRAWING NUMBER: 4367 REV. 1

TVGA CONSULTANTS
 NO EXCEPTIONS TAKEN REJECTED
 FURNISH AS CORRECTED
 REVISE AND RESUBMIT
 ENGINEER has reviewed Shop Drawings and Samples and other data which Contractor is required to submit, only for conformance with the information given in the Contract Documents and compatibility with the design concept of the completed Project as a functioning whole as indicated in the Contract Documents. Such reviews do not extend to means, methods, techniques, sequences or procedures of construction or to safety precautions and programs incident thereto. Contractor is responsible for dimensions to be confirmed and controlled at the job site; for information that pertains solely to the fabrication processes or to techniques of construction; and for coordination of the work of all trades.
 BY: *BPC* DATE: 4/1/05

REV. △ NATURAL RUBBER WAS BY: MM DATE: 4/05 CK'D BY: DATE: