

10 KEEPER PLATE, kpb5
BAR 1/2" x 2 1/2" x 15 1/2"
METALLIZED
USE WITH MP4

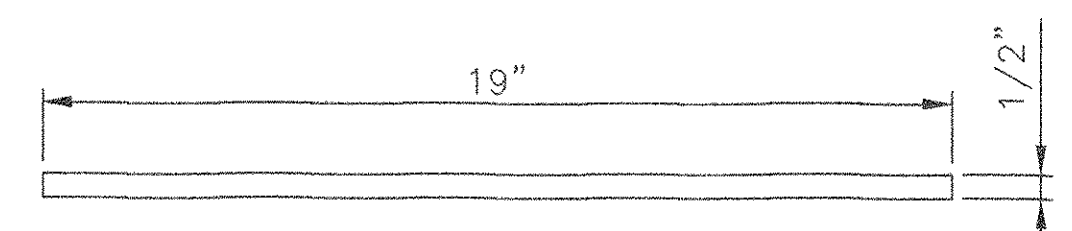
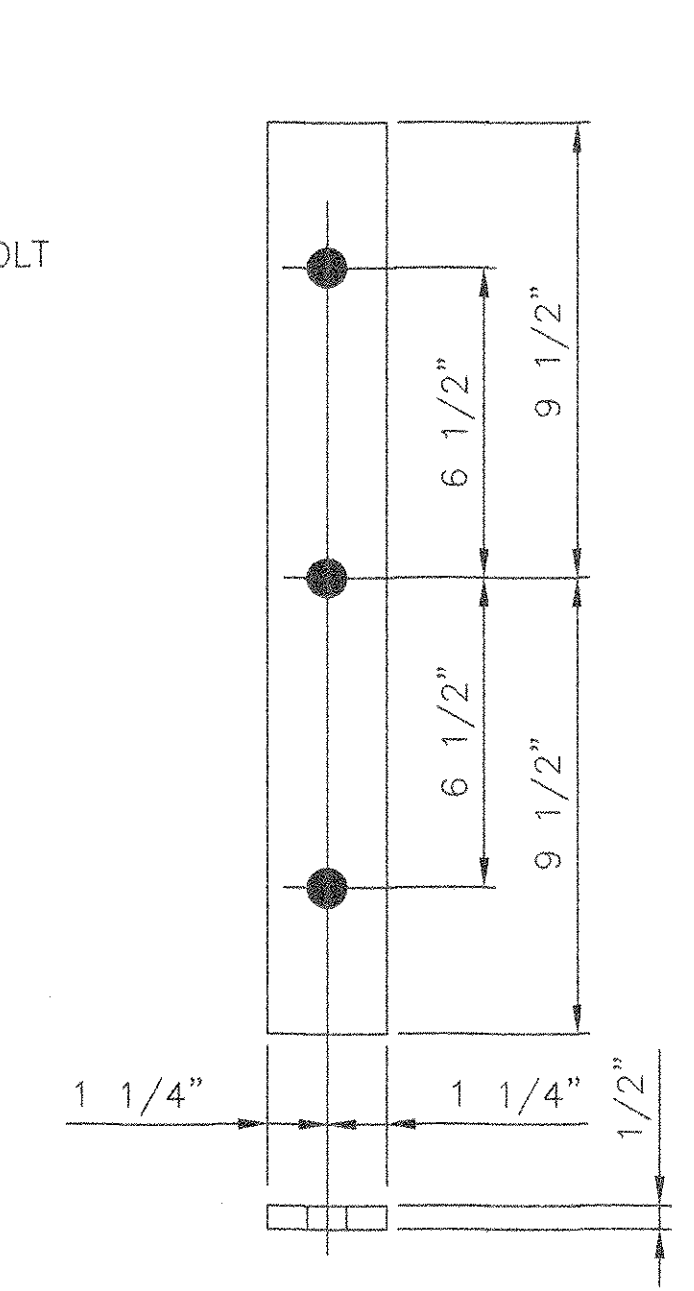
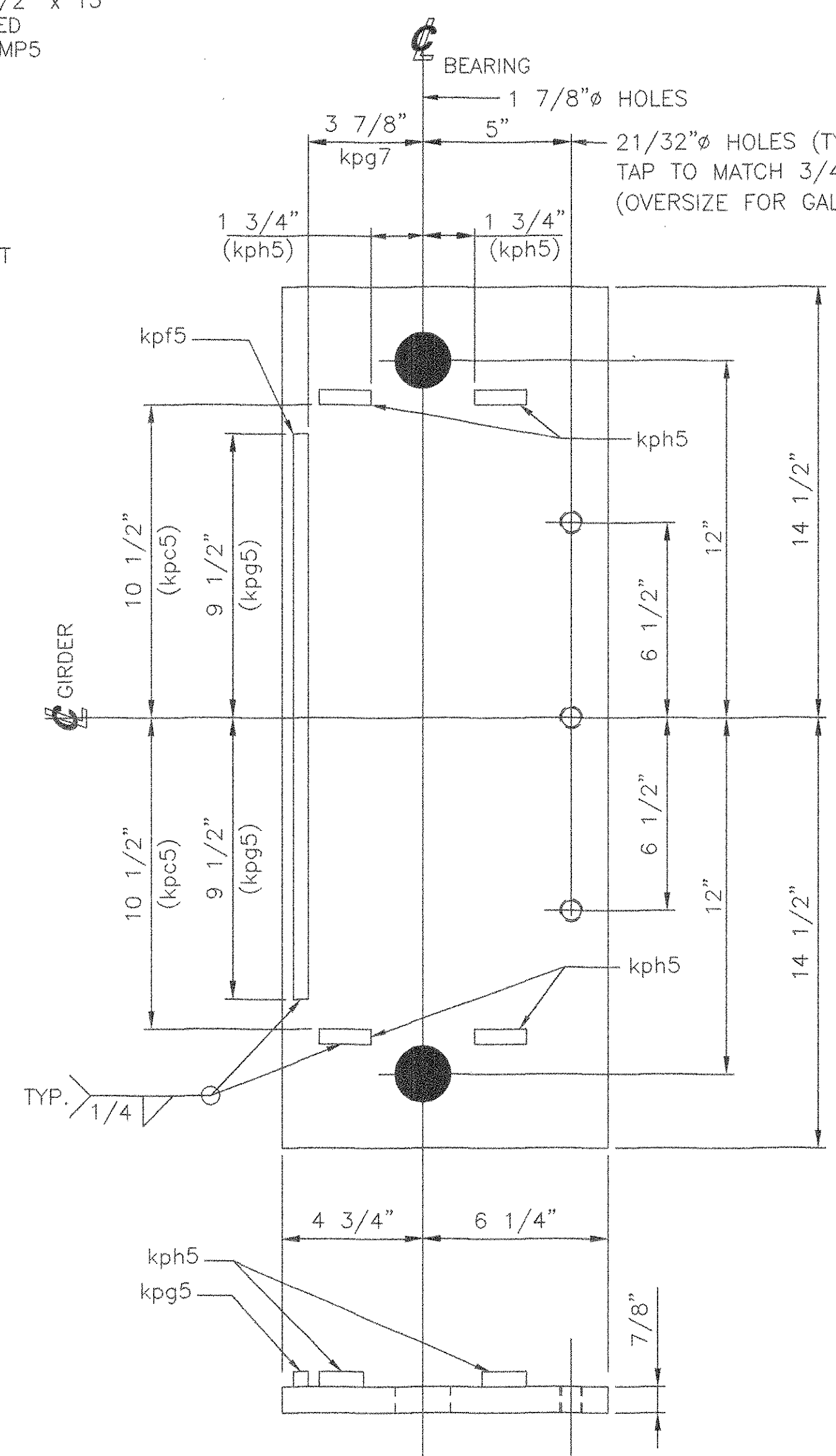
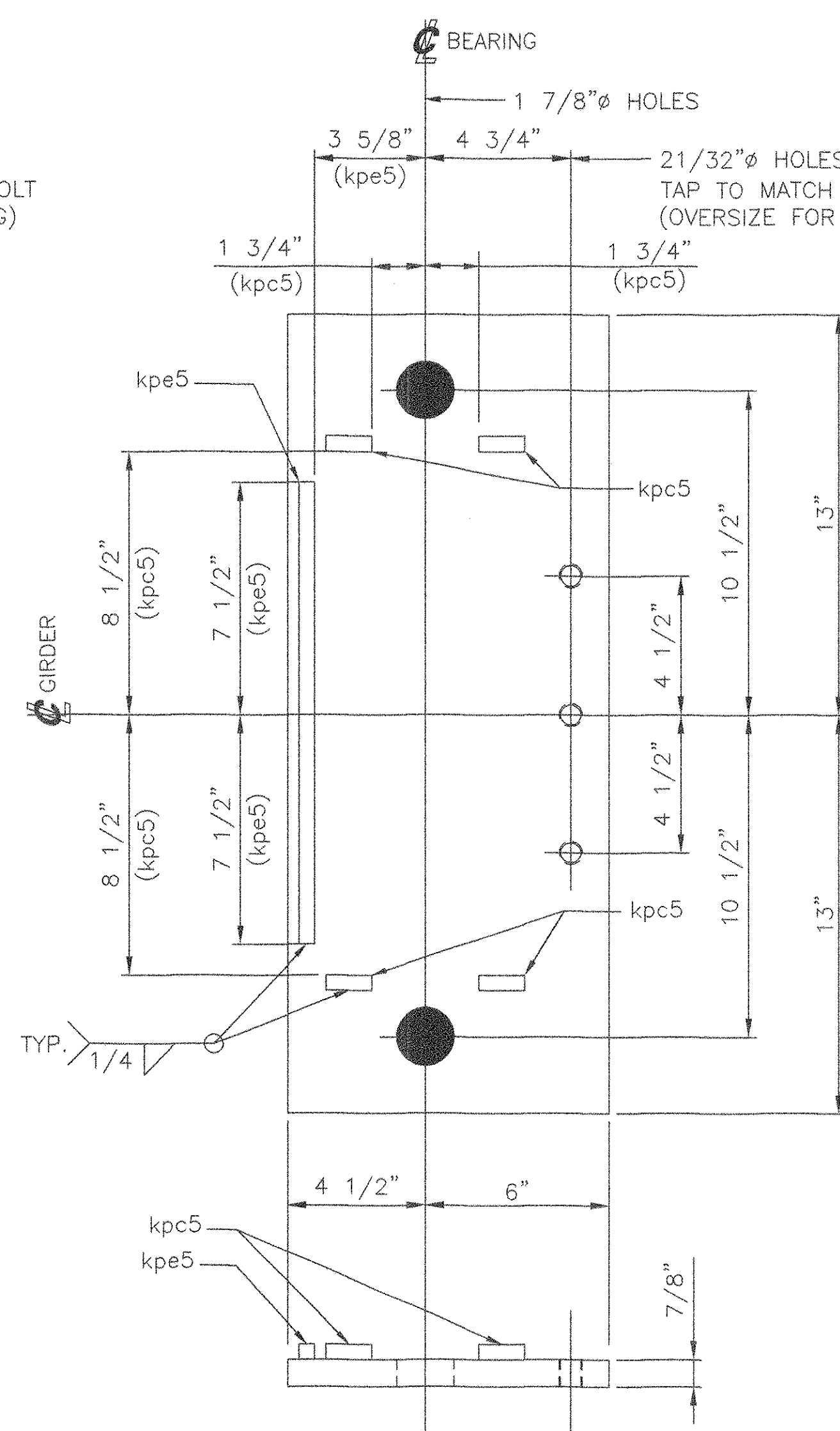
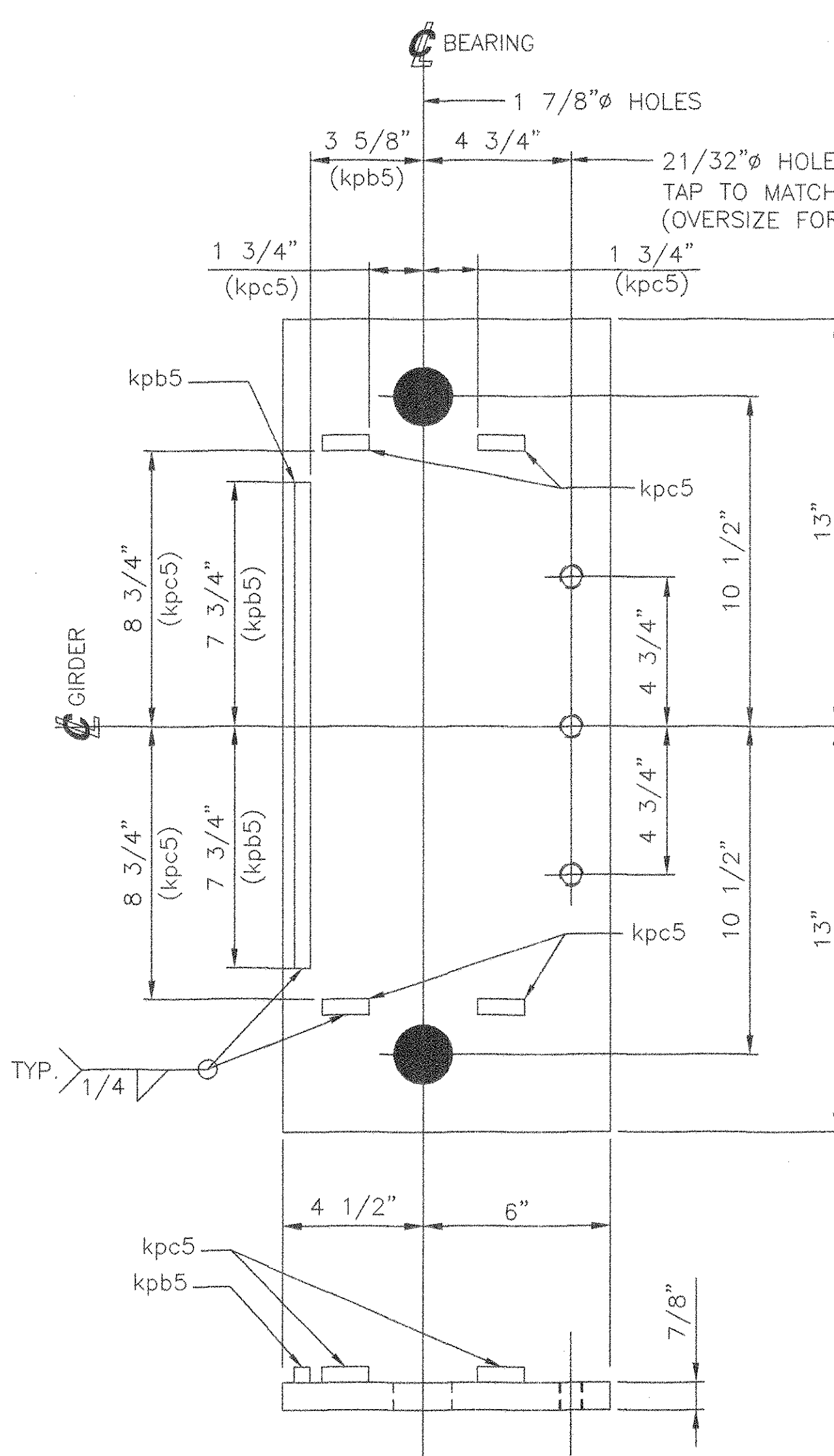
10 KEEPER PLATE, kpe5
BAR 1/2" x 1/2" x 15 1/2"
USE WITH MP4

10 KEEPER PLATE, kpe5
BAR 1/2" x 1/2" x 15"
USE WITH MP5

80 KEEPER PLATES, kpc5
BAR 1/2" x 1/2" x 1 1/2"
USE WITH MP4 AND MP5

10 KEEPER PLATES, kpd5
BAR 1/2" x 2 1/2" x 15"
METALLIZED
USE WITH MP5

MARK	QTY	DESCRIPTION	FT	IN	16ths	FAB MARK	MILL MARK	WEIGHT
MP4	10	PL 7/8" x 10 1/2"	.	26	0	.	METALLIZED	690
.	10	BAR 1/2" x 2 1/2"	.	15	8	kpe5	METALLIZED	55
.	10	BAR 1/2" x 1/2"	.	15	8	kpb5	.	11
.	40	BAR 1/2" x 1/2"	.	1	8	kpc5	.	4
MP5	10	PL 7/8" x 10 1/2"	.	26	0	.	METALLIZED	690
.	10	BAR 1/2" x 2 1/2"	.	15	0	kpe5	METALLIZED	53
.	10	BAR 1/2" x 1/2"	.	15	0	kpe5	.	11
.	40	BAR 1/2" x 1/2"	.	1	8	kpc5	.	4
MP6	10	PL 7/8" x 11"	.	29	0	.	METALLIZED	792
.	10	BAR 1/2" x 2 1/2"	.	19	0	kpf5	METALLIZED	67
.	10	BAR 1/2" x 1/2"	.	19	0	kph5	.	13
.	40	BAR 1/2" x 1/2"	.	1	12	kph5	.	5
.	90	3/4" H.S. BOLTS	.	1	8	GALV.	A325 TYPE 1	48
.	90	3/4" H.D. WASHERS	.	.	.	GALV.	F-436	4
TOTAL =								2447



10 KEEPER PLATES, kpg5
BAR 1/2" x 2 1/2" x 19"
METALLIZED
USE WITH MP6

10 KEEPER PLATES, kpg5
BAR 1/2" x 1/2" x 19"
USE WITH MP6

40 KEEPER PLATES, kph5
BAR 1/2" x 1/2" x 1 3/4"
USE WITH MP6

10 EXPANSION MASONRY PLATES, MP4
PL 7/8" x 10 1/2" x 26"
METALLIZED
LOCATE AT
BRIDGE NO. 51N, ABUTMENT 2
AND
BRIDGE NO. 51S, ABUTMENT 2

10 EXPANSION MASONRY PLATES, MP5
PL 7/8" x 10 1/2" x 26"
METALLIZED
LOCATE AT
BRIDGE NO. 51N, PIER 1(S1)
AND
BRIDGE NO. 51S, PIER 1(S1)

10 EXPANSION MASONRY PLATE, MP6
PL 7/8" x 11" x 29"
METALLIZED
LOCATE AT
BRIDGE NO. 51N, PIER 1(S2)
AND
BRIDGE NO. 51S, PIER 1(S2)

TVGA CONSULTANTS
 NO EXCEPTIONS TAKEN
 REJECTED
 FURNISH AS CORRECTED
 REVISE AND RESUBMIT
 ENCLOSURE has reviewed Shop Drawings and Samples and other data which Contractor is required to submit, and for compliance with the information given in the Contract Documents and compliance with the design notes of the completed Project as a condition of award. In the event of any discrepancy, the Contractor shall be responsible for clarification or to fully guarantee and guarantee of the work. Contractor is responsible for dimensions to be confirmed and corrected at the job site; for information that pertains solely to the fabrication processes or to techniques of construction and for coordination of the work of all trades.
 BY: *[Signature]*
 DATE: 4/12/05

SEE SHEET AS1 FOR ASSEMBLY NOTES.
SEE SHEET 1 FOR SHOP NOTES.

STATE OF VERMONT
 AGENCY OF TRANSPORTATION
 TOWN OF BOLTON
 PROJECT NO.: IM-089-2 (29)
 BRIDGE NO.'S 51N AND 51S
 ON INTERSTATE 89

COSMEC, INC.		70 SOUTH STREET WALPOLE, MA. 02081	
SCALE: 1/4" = 1"	DRAWN BY: JEP	CHECKED BY: PJM	
SHT 5 OF 12	DATE: 01/05	DATE: 02/05	
COSMEC BEARING 66319			
CUSTOMER: WINTERSET	S.O. NUMBER: 60233	DRAWING NUMBER: 4364	REV: 1

REV. Δ	REVISED BILL OF MATERIALS	BY: MM	DATE: 4/05	CK'D BY:	DATE:
---------------	---------------------------	--------	------------	----------	-------