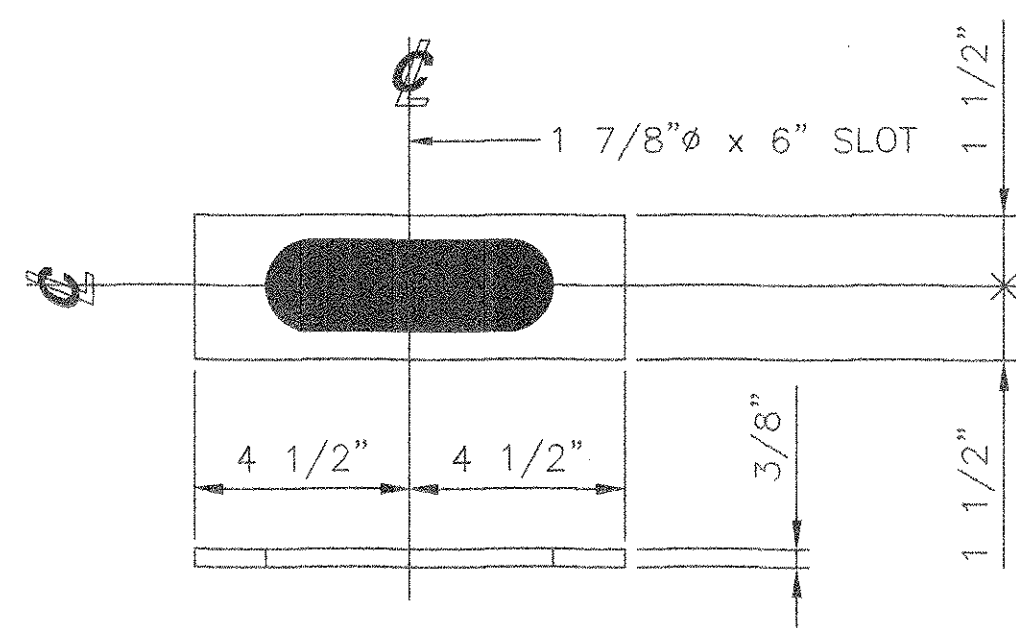


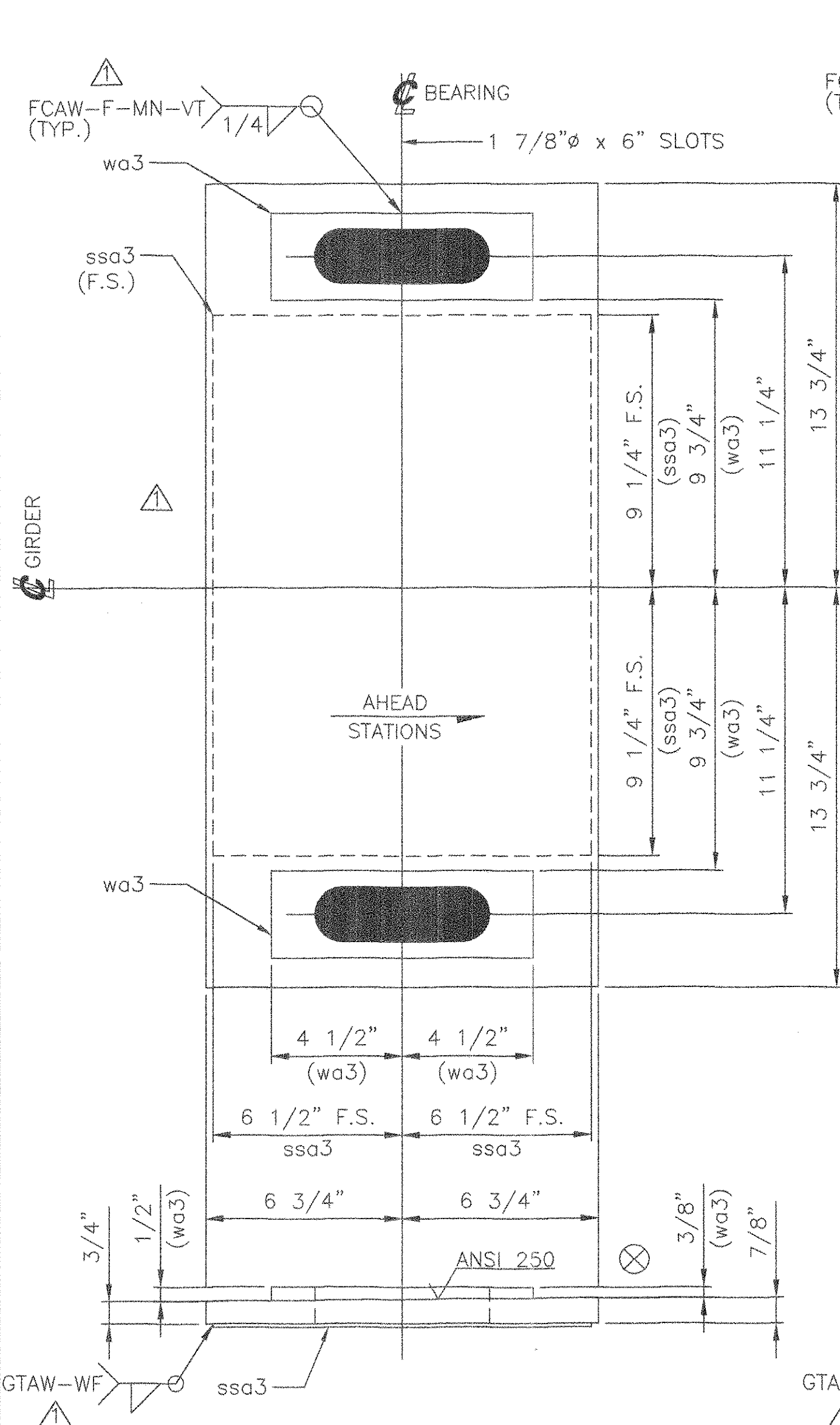
20 BEVELED WASHERS, wa3  
PL 1/2" x 3" x 9"  
USE WITH  
EXPANSION SOLE PLATES SP9 & SP10



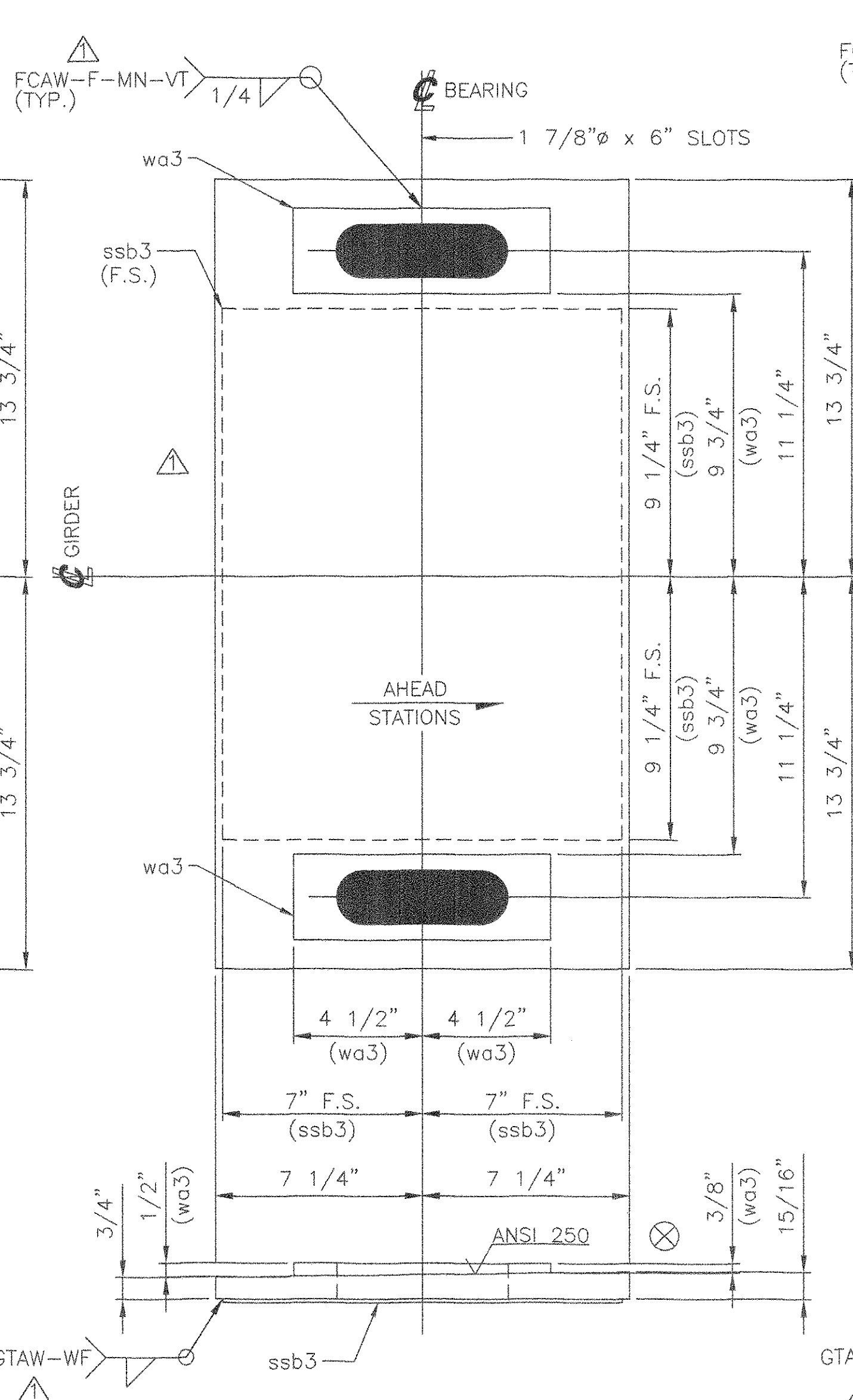
30 WASHERS, wb3  
PL 3/8" x 3" x 9"  
USE WITH  
EXPANSION SOLE PLATES SP11 & SP12

MARK	QTY	DESCRIPTION	FT	IN	16ths	FAB MARK	MILL MARK	WEIGHT
SP9	5	PL 7/8" x 13 1/2"	.	27	8		METALLIZED A240 TYPE 304 MIRROR FIN.	461
.	5	PL 11 GA (1/8") x 13"	.	18	8	ssa3		43
.	10	PL 1/2" x 3"	.	9	0	wa3		38
SP10	5	PL 15/16" x 14 1/2"	.	27	8		METALLIZED A240 TYPE 304 MIRROR FIN.	530
.	5	PL 11 GA (1/8") x 14"	.	18	8	ssb3		47
.	10	PL 1/2" x 3"	.	9	0	wa3		38
SP11	10	PL 7/8" x 14"	.	29	8		METALLIZED A240 TYPE 304 MIRROR FIN.	1025
.	10	PL 11 GA (1/8") x 13 1/2"	.	20	8	ssc3		98
.	20	PL 3/8" x 3"	.	9	0	wb3		57
SP12	5	PL 7/8" x 13"	.	29	8		METALLIZED A240 TYPE 304 MIRROR FIN.	476
.	5	PL 11 GA (1/8") x 12 1/2"	.	20	8	ssd3		45
.	10	PL 3/8" x 3"	.	9	0	wb3		29

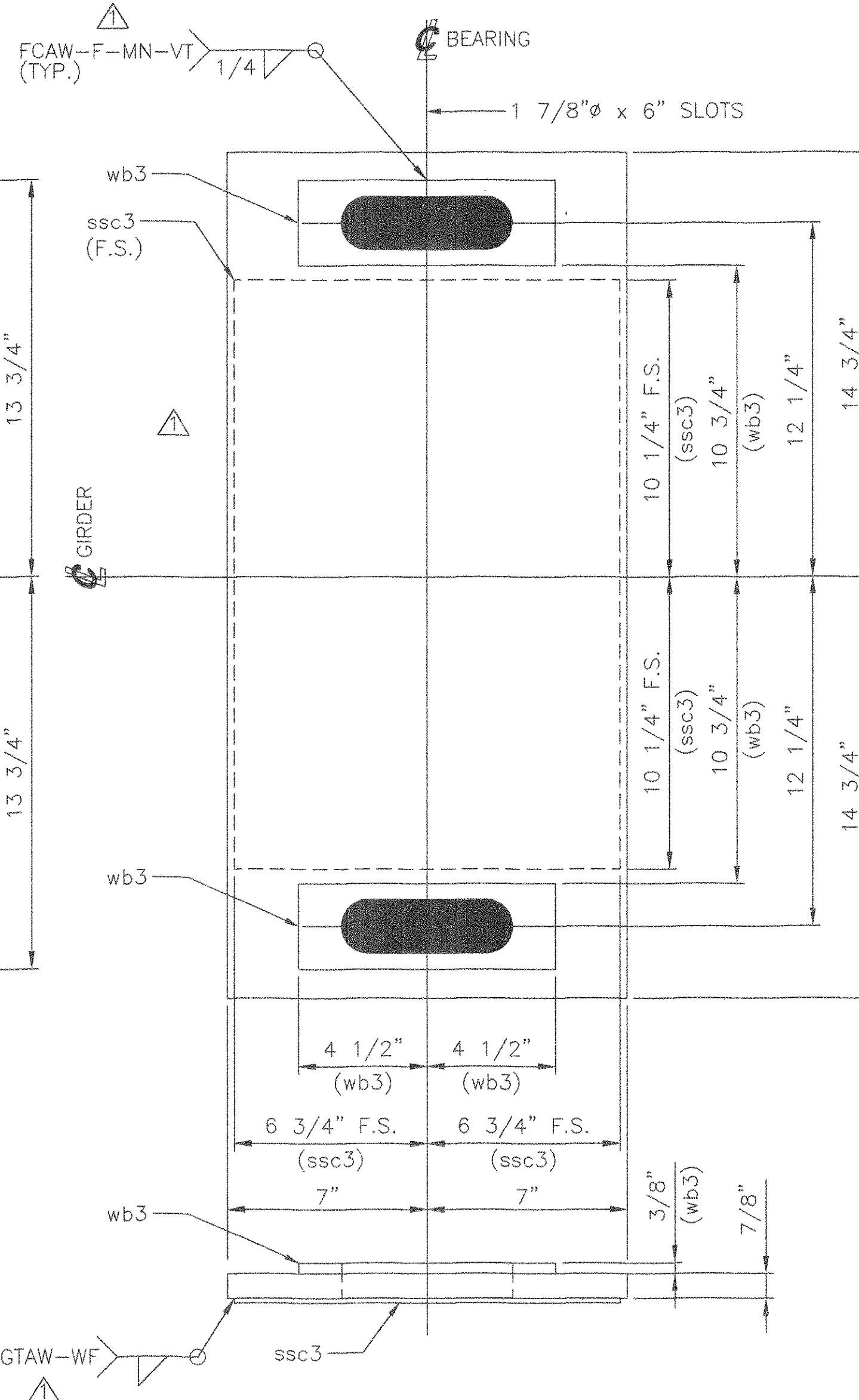
TOTAL GROSS WT = 2887



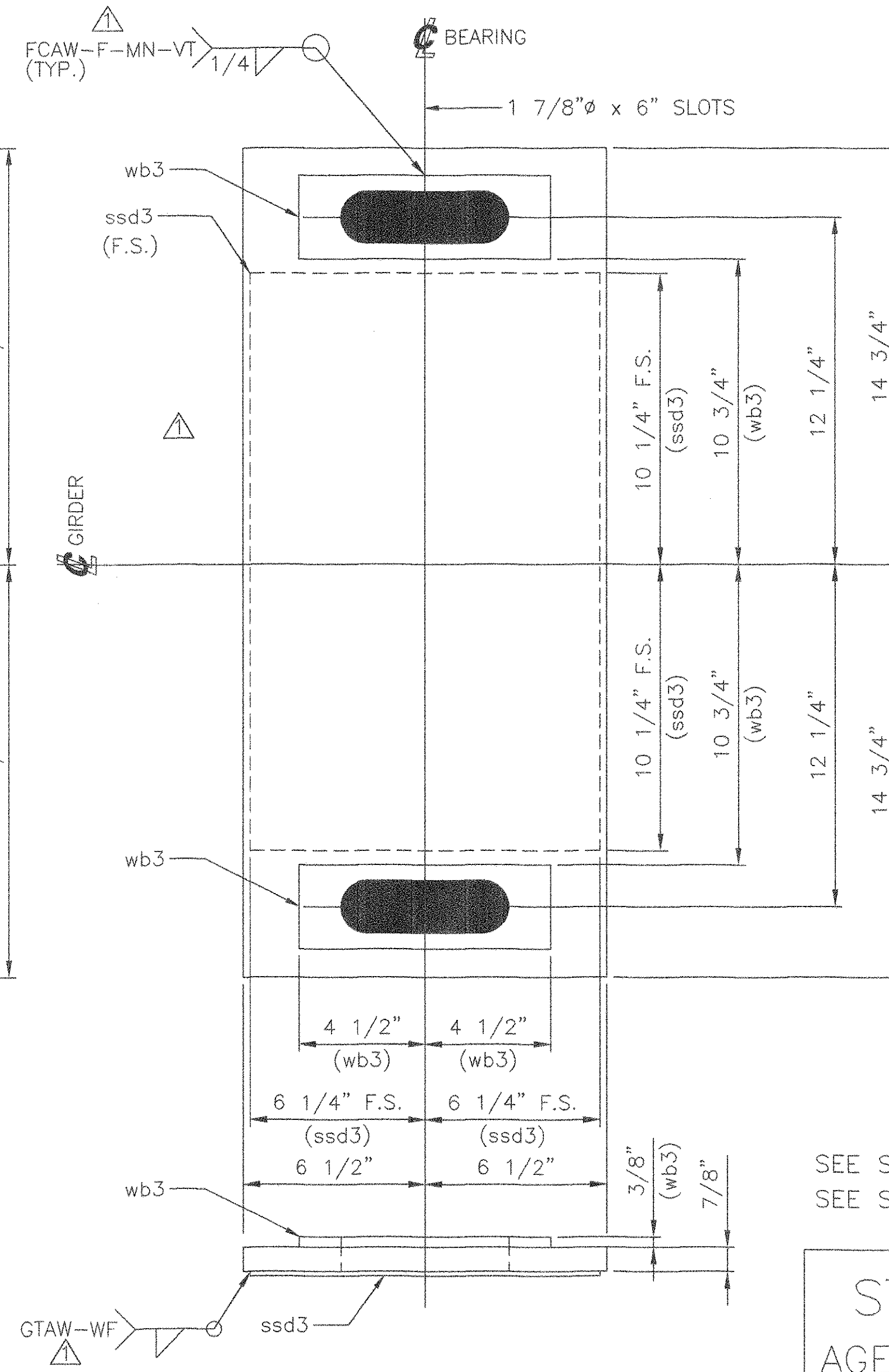
5 EXPANSION SOLE PLATES, SP9  
PL 7/8" x 13 1/2" x 27 1/2"  
METALLIZED AS NOTED  
LOCATE AT  
BRIDGE 51N, PIER 3



5 EXPANSION SOLE PLATES, SP10  
PL 15/16" x 14 1/2" x 27 1/2"  
METALLIZED AS NOTED  
LOCATE AT  
BRIDGE 51S, PIER 2



10 EXPANSION SOLE PLATES, SP11  
PL 7/8" x 14" x 29 1/2"  
METALLIZED AS NOTED  
LOCATE AT  
BRIDGE 51N, PIER 4  
AND  
BRIDGE 51S, PIER 5



5 EXPANSION SOLE PLATES, SP12  
PL 7/8" x 13" x 29 1/2"  
METALLIZED AS NOTED  
LOCATE AT  
BRIDGE 51S, PIER 4

**TVGA CONSULTANTS**

NO EXCEPTIONS TAKEN  REJECTED  
FURNISH AS CORRECTED   
REVISE AND RESUBMIT

ENGINEER has reviewed Shop Drawings and Samples and other data which Contractor is required to submit, only for conformance with the information shown in the Contract Documents and compliance with the design concept of the Contract Documents. Each review is to be made in accordance with the Contract Documents. Each review is to be made in accordance with the Contract Documents. Each review is to be made in accordance with the Contract Documents. Each review is to be made in accordance with the Contract Documents.

BY: *BDC*  
DATE: *7/16/05*

SEE SHEET AS1 FOR ASSEMBLY NOTES.  
SEE SHEET 1 FOR SHOP NOTES.

STATE OF VERMONT  
AGENCY OF TRANSPORTATION  
TOWN OF BOLTON  
PROJECT NO.: IM-089-2 (29)  
BRIDGE NO.'S 51N AND 51S  
ON INTERSTATE 89

COSMEC, INC. 70 SOUTH STREET  
WALPOLE, MA. 02081

SCALE: 1/4"=1" DRAWN BY: JEP CHECKED BY: PJM  
SHT 3 OF 12 DATE: 01/05 DATE: 02/05

COSMEC BEARING 66317

CUSTOMER: WINTERSET SO. NUMBER: 60233 DRAWING NUMBER: 4362 REV: 1

REV. REVISED WELD DETAILS, INCREASED WASHER QTY, REVISED SOLE PLATE METALLIZING AND AS NOTED BY: MM DATE: 4/05 CK'D BY: DATE: