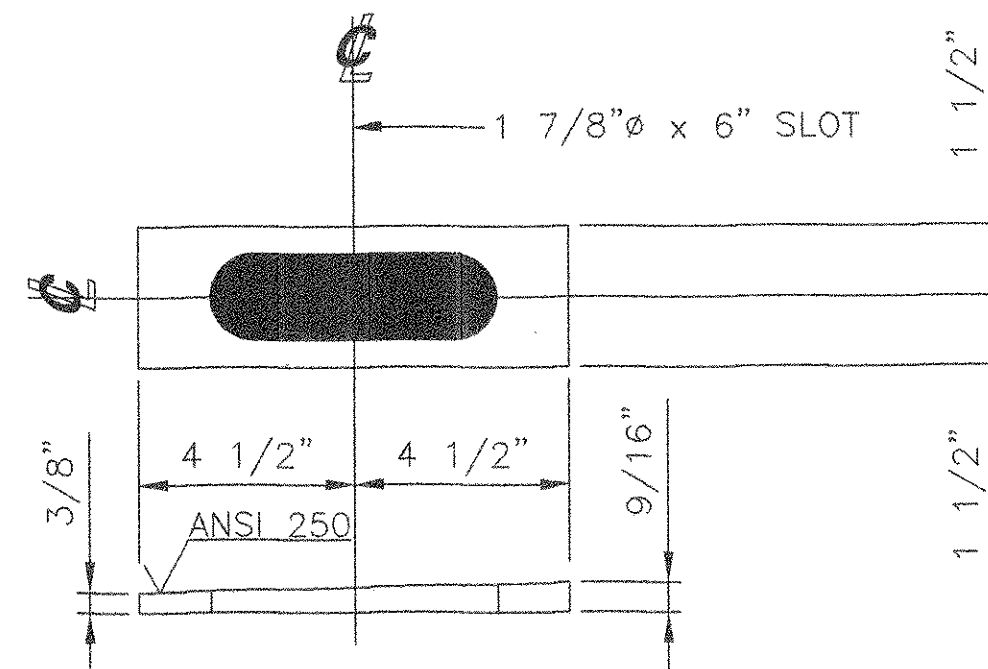


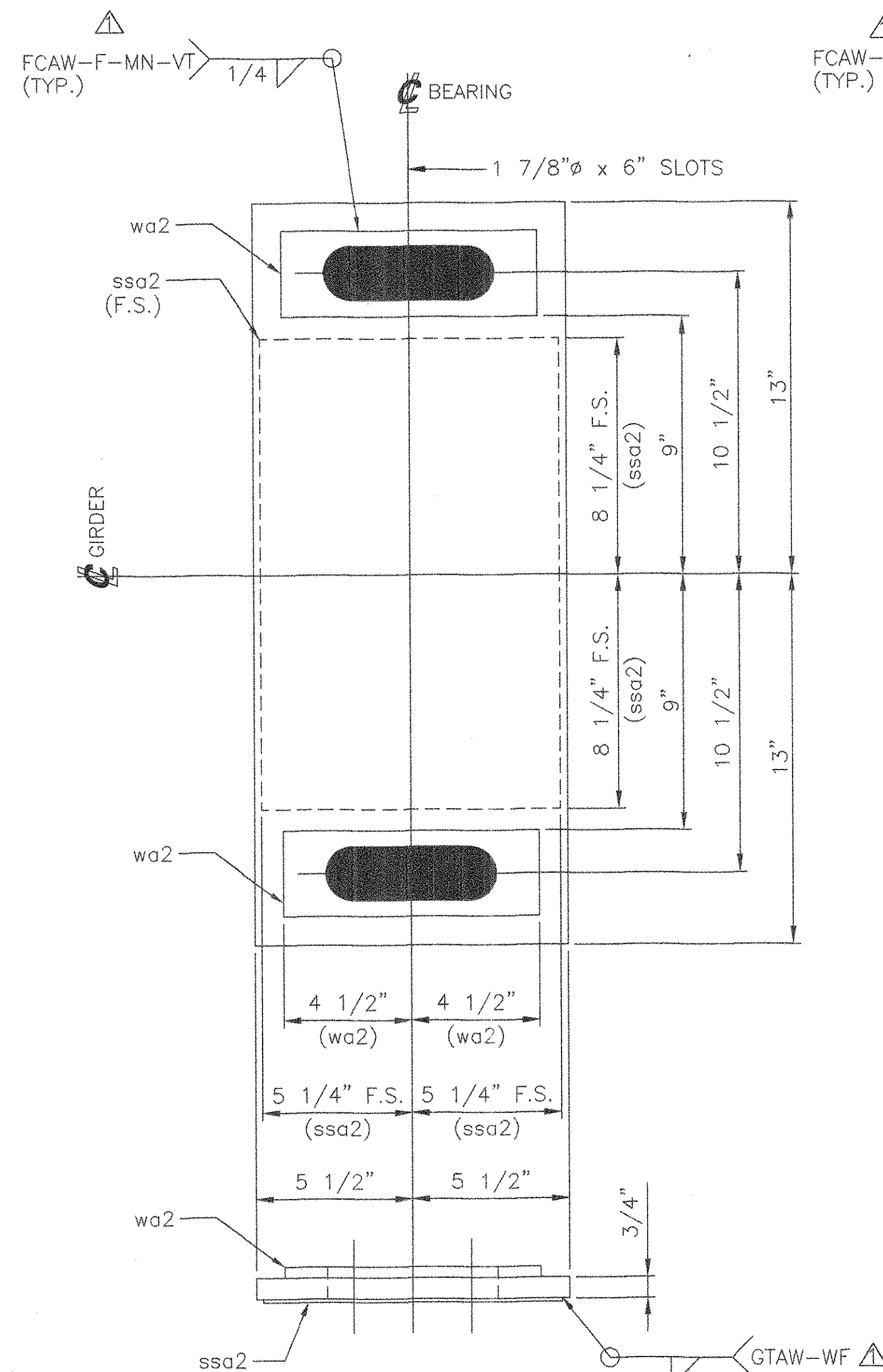
40 WASHERS, wa2
PL 3/8" x 3" x 9"
USE WITH
EXPANSION SOLE PLATES SP5 & SP6



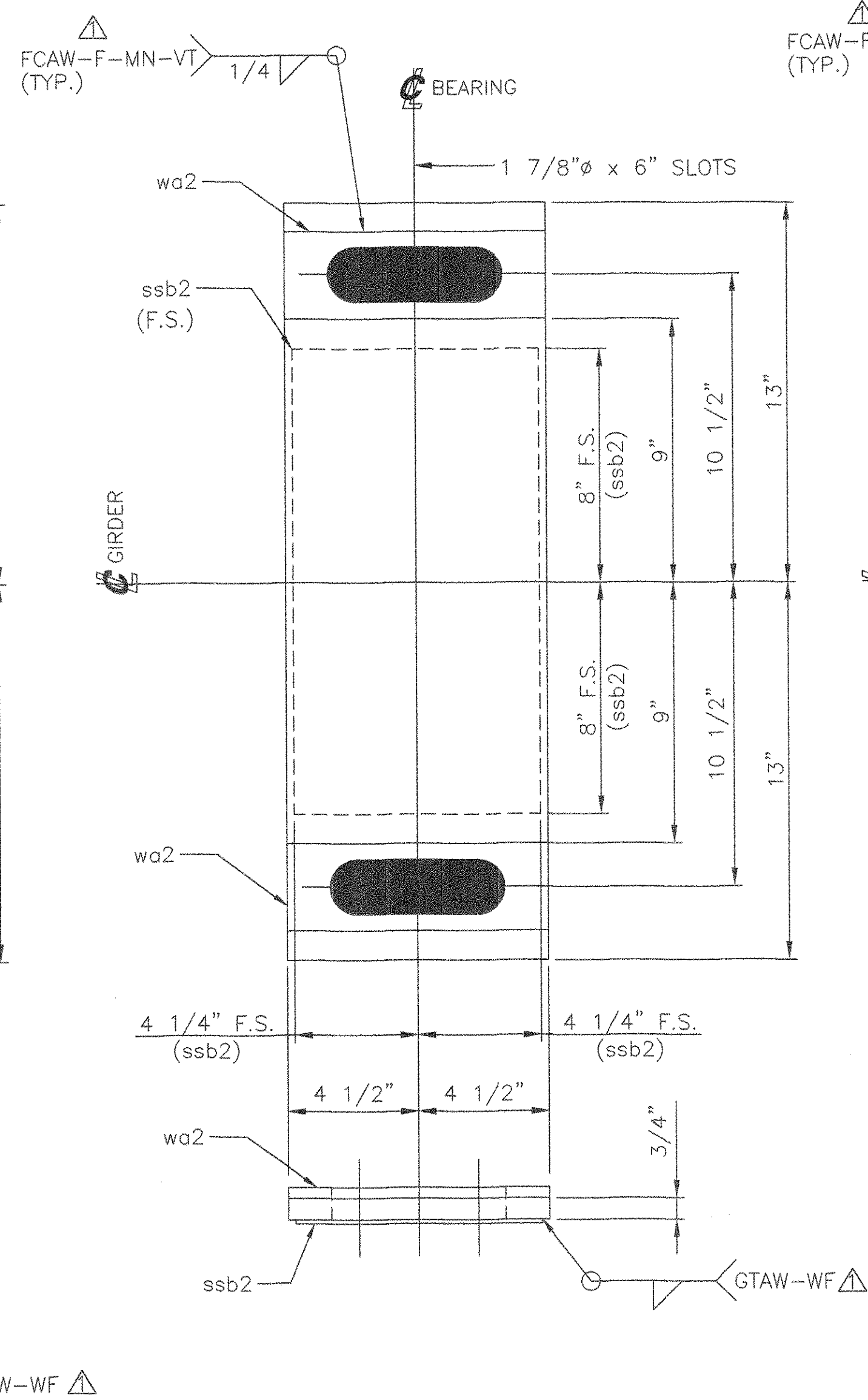
20 BEVELED WASHERS, wb2
PL 9/16" x 3" x 9"
USE WITH
EXPANSION SOLE PLATE SP7 & SP8

MARK	QTY	DESCRIPTION	FT	IN	16ths	FAB MARK	MILL MARK	WEIGHT
SP5	10	PL 3/4" x 11"	.	26	0	.	METALLIZED A240	608
.	10	STAINLESS PL. (11ga) 1/8" x 10 1/2"	.	16	8	ssd2	TYPE 304 MIRROR FIN. METALLIZED	68
.	20	PL 3/8" x 3"	.	9	0	wa2	.	57
SP6	10	PL 3/4" x 9"	.	26	0	.	METALLIZED A240	498
.	10	STAINLESS PL. (11ga) 1/8" x 8 1/2"	.	16	0	ssb2	TYPE 304 MIRROR FIN. METALLIZED	53
.	20	PL 3/8" x 3"	.	9	0	wa2	.	57
SP7	5	PL 15/16" x 9 1/2"	.	29	0	.	METALLIZED A240	328
.	5	STAINLESS PL. (11ga) 1/8" x 9"	.	20	0	ssd2	TYPE 304 MIRROR FIN. METALLIZED	35
.	10	PL 9/16" x 3"	.	9	0	wb2	.	43
SP8	5	PL 15/16" x 10 1/2"	.	29	0	.	METALLIZED A240	363
.	5	STAINLESS PL. (11ga) 1/8" x 10"	.	20	0	ssd2	TYPE 304 MIRROR FIN. METALLIZED	39
.	10	PL 9/16" x 3"	.	9	0	wb2	.	43

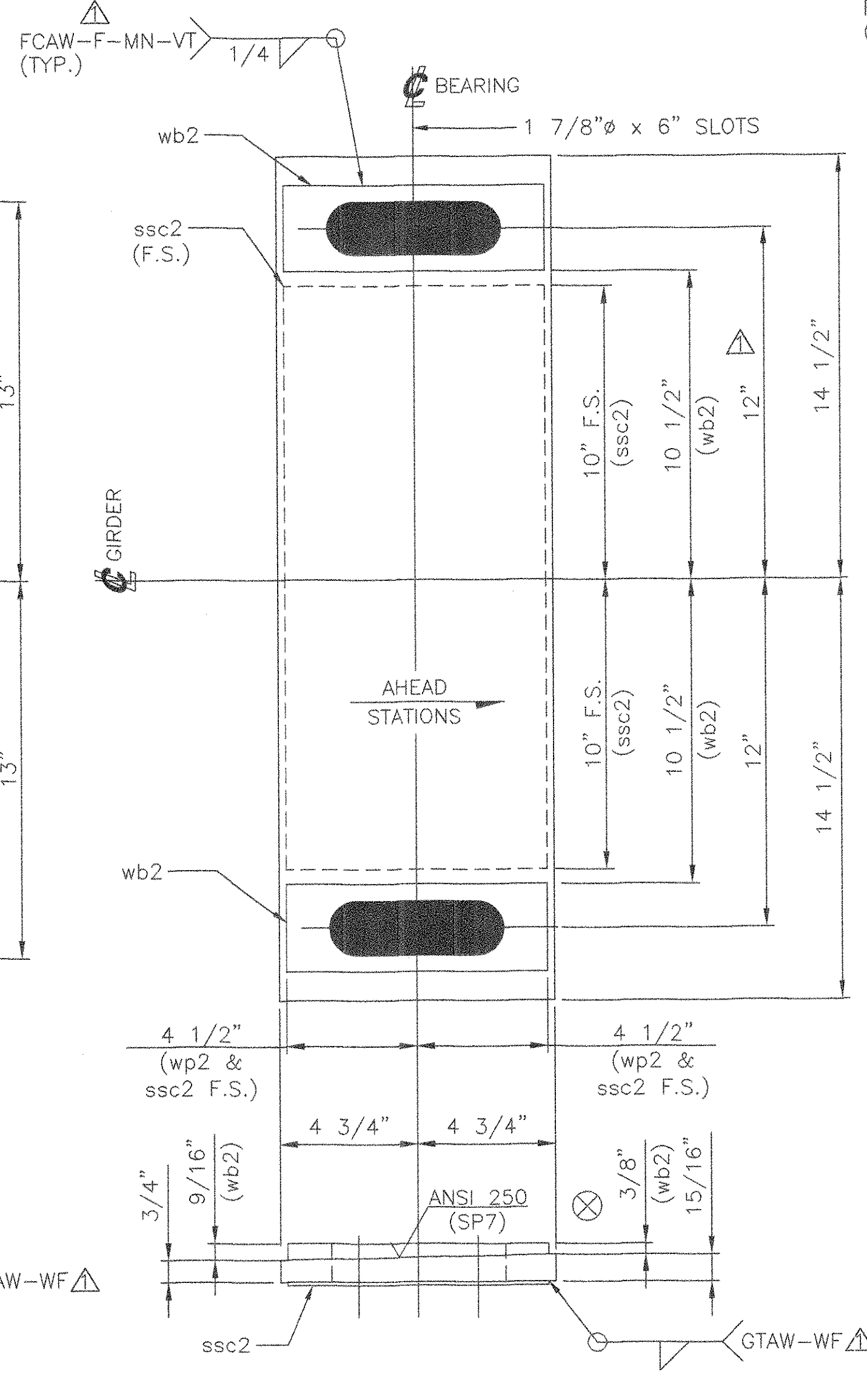
TOTAL GROSS WT= 2192



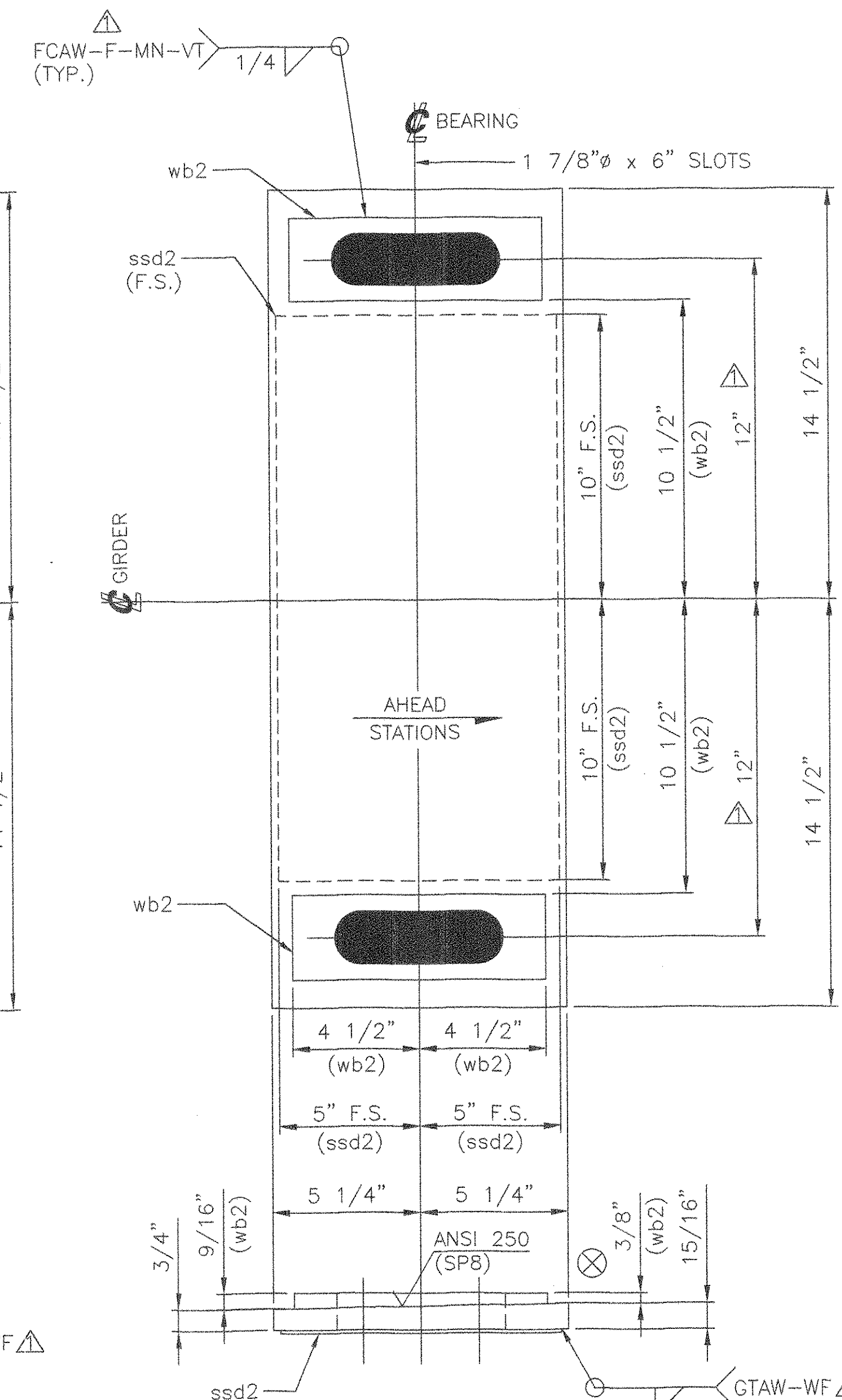
10 EXPANSION SOLE PLATES, SP5
PL 3/4" x 11" x 26"
METALLIZED AS NOTED
LOCATE AT
BRIDGE 51N, ABUTMENT 2
AND
BRIDGE 51S, ABUTMENT 2



10 EXPANSION SOLE PLATES, SP6
PL 3/4" x 9" x 26"
METALLIZED AS NOTED
LOCATE AT
BRIDGE 51N, PIER 1(S1)
AND
BRIDGE 51S, PIER1(S1)



5 EXPANSION SOLE PLATE, SP7
PL 15/16" x 9 1/2" x 29"
METALLIZED AS NOTED
LOCATE AT
BRIDGE 51N, PIER 1(S2)



5 EXPANSION SOLE PLATE, SP8
PL 15/16" x 10 1/2" x 29"
METALLIZED AS NOTED
LOCATE AT
BRIDGE 51S, PIER 1(S2)

TVGA CONSULTANTS

NO EXCEPTIONS TAKEN REJECTED
 FURNISH AS CORRECTED
 REVISE AND RESUBMIT
ENGINEER has reviewed Shop Drawings and Samples and other data which Contractor is required to submit, only for conformance with the information given in the Contract Documents and compliance with the design concept of the completed Project as is described herein as indicated in the Contract Documents. Such review is not intended to insure, nor does it constitute, approval of procedures of construction or to satisfy provisions and programs incident thereto. Contractor is responsible for dimensions to be confirmed and controlled at the job site, for information that pertains solely to the fabrication processes or to techniques of construction, and for coordination of the work of all trades.
BY: *[Signature]*
DATE: 2/12/05

SEE SHEET AS1 FOR ASSEMBLY NOTES.
SEE SHEET 1 FOR SHOP NOTES.

STATE OF VERMONT
AGENCY OF TRANSPORTATION
TOWN OF BOLTON
PROJECT NO.: IM-089-2 (29)
BRIDGE NO.'S 51N AND 51S
ON INTERSTATE 89

COSMEC, INC. 70 SOUTH STREET
WALPOLE, MA. 02081

SCALE: 1/4"=1"	DRAWN BY: JEP	CHECKED BY: PJM
SHT 2 OF 12	DATE: 01/05	DATE: 02/05
COSMEC BEARING bb 316		
CUSTOMER: WINTERSET	S.O. NUMBER: 60233	DRAWING NUMBER: 4361

REV. A	REVISED WELD DETAILS, REVISED SOLE PLATE METALIZING, REVISED HOLE SPACING ON SP7 & SP8	BY: MM	DATE: 4/05	CK'D BY:	DATE:
--------	--	--------	------------	----------	-------