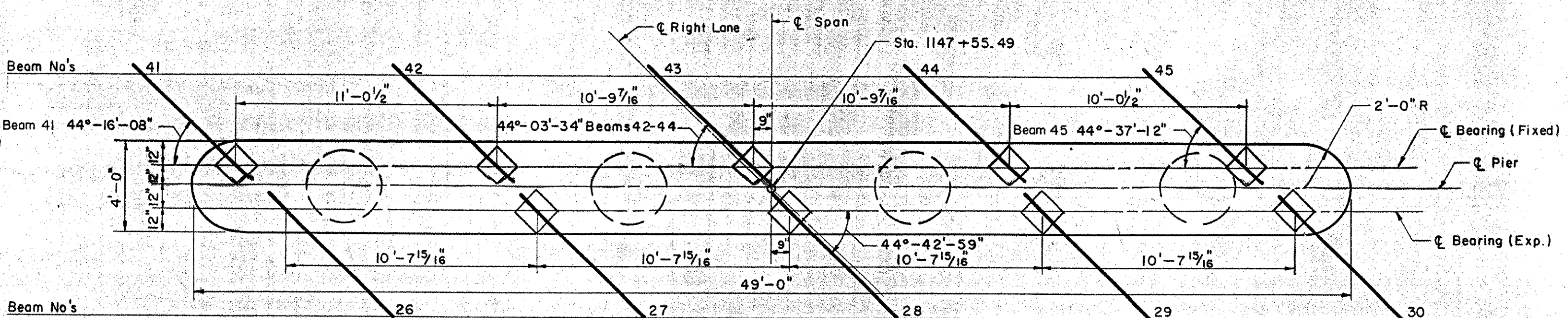
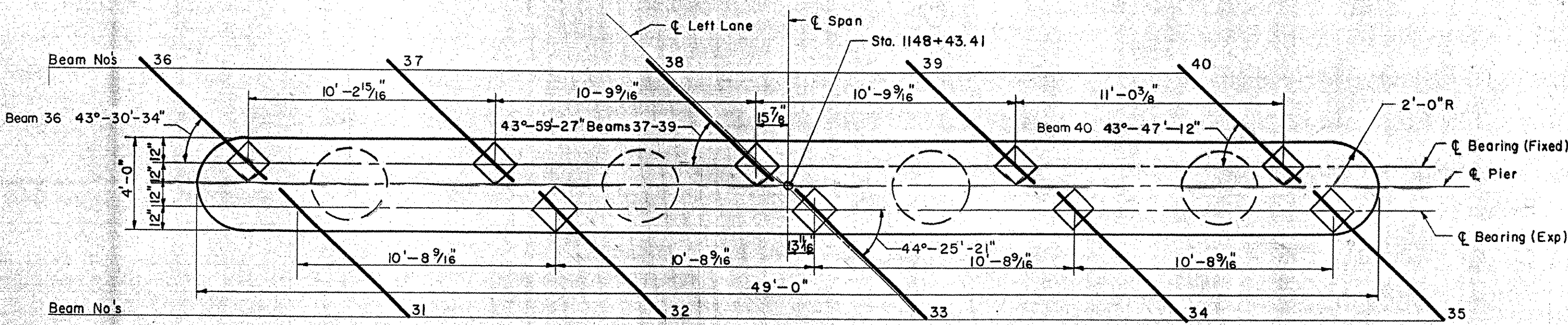
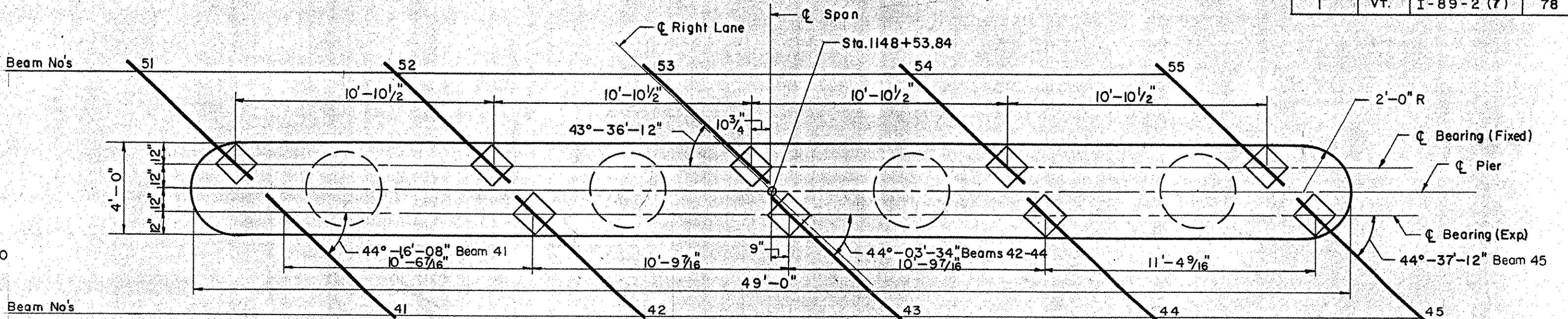
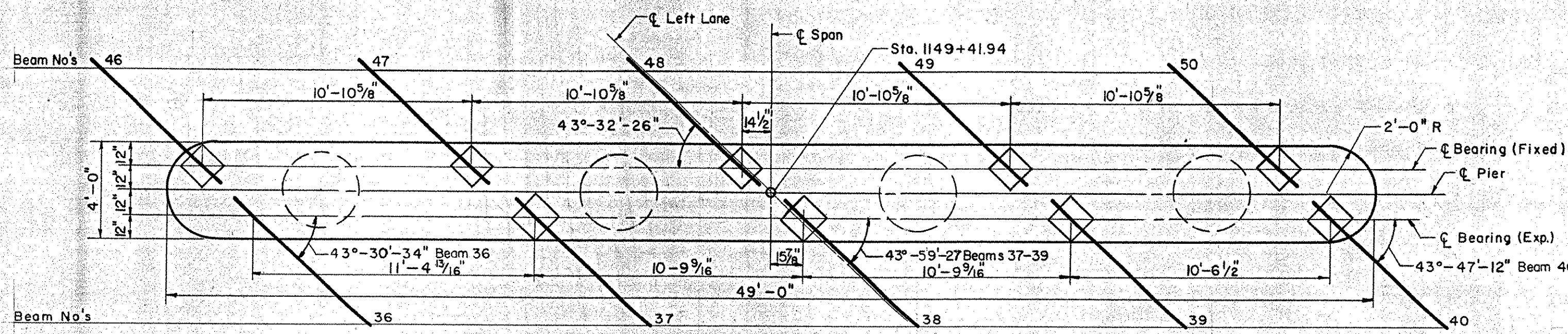
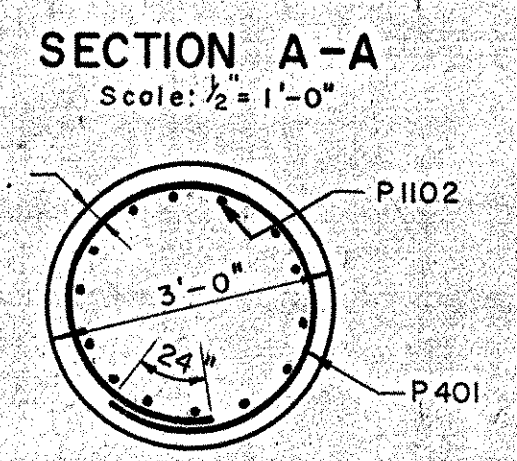
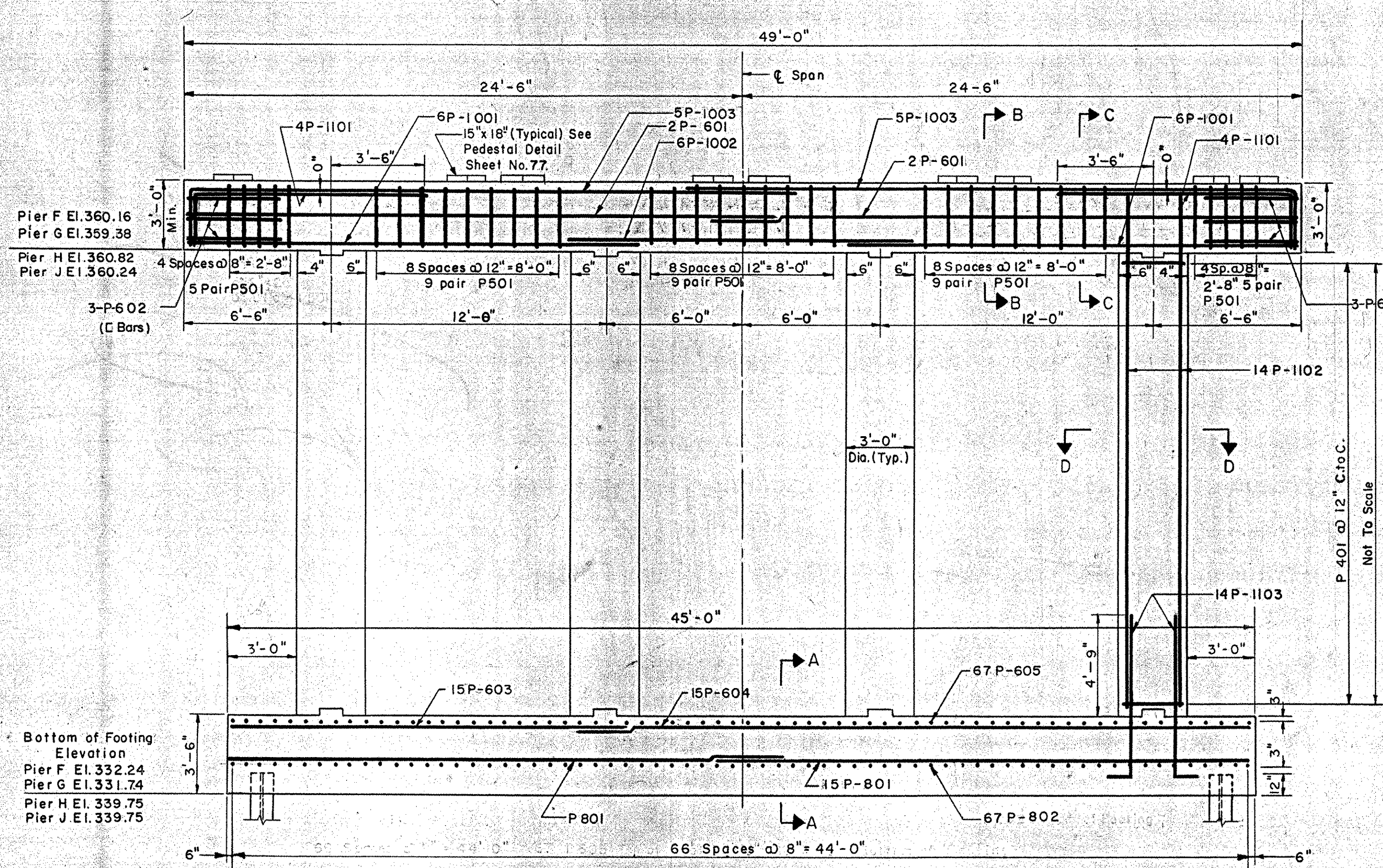
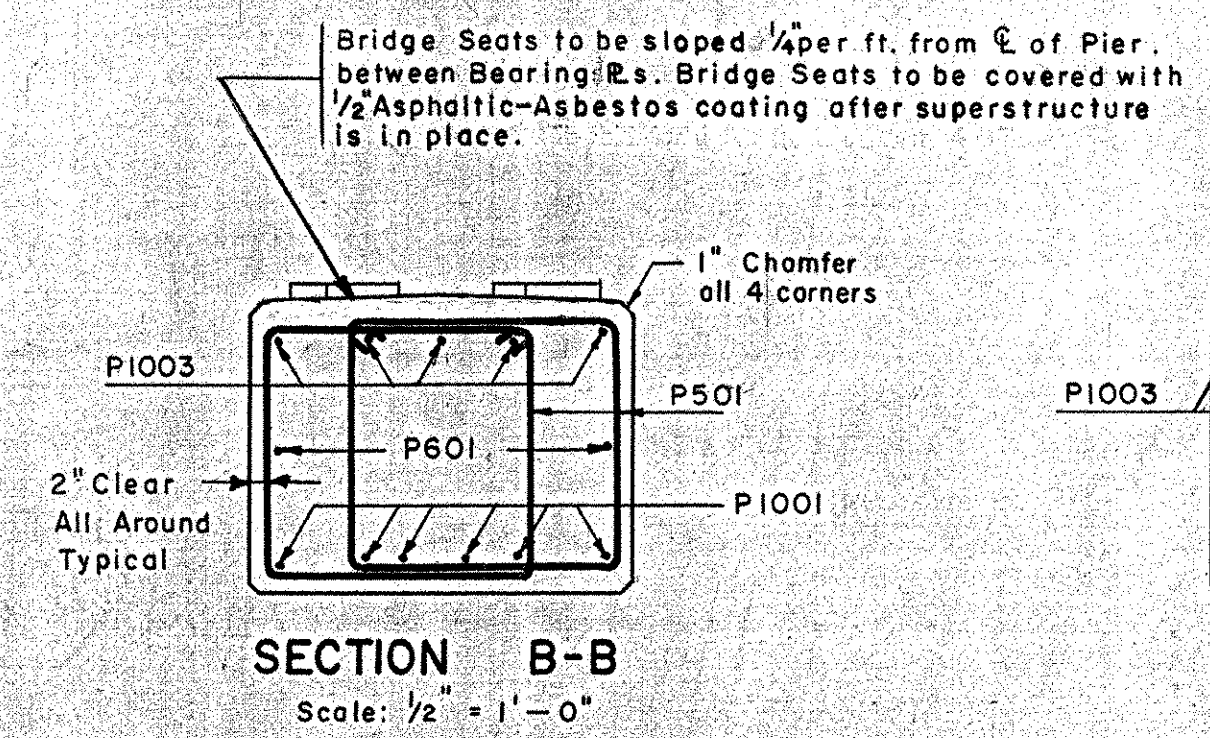
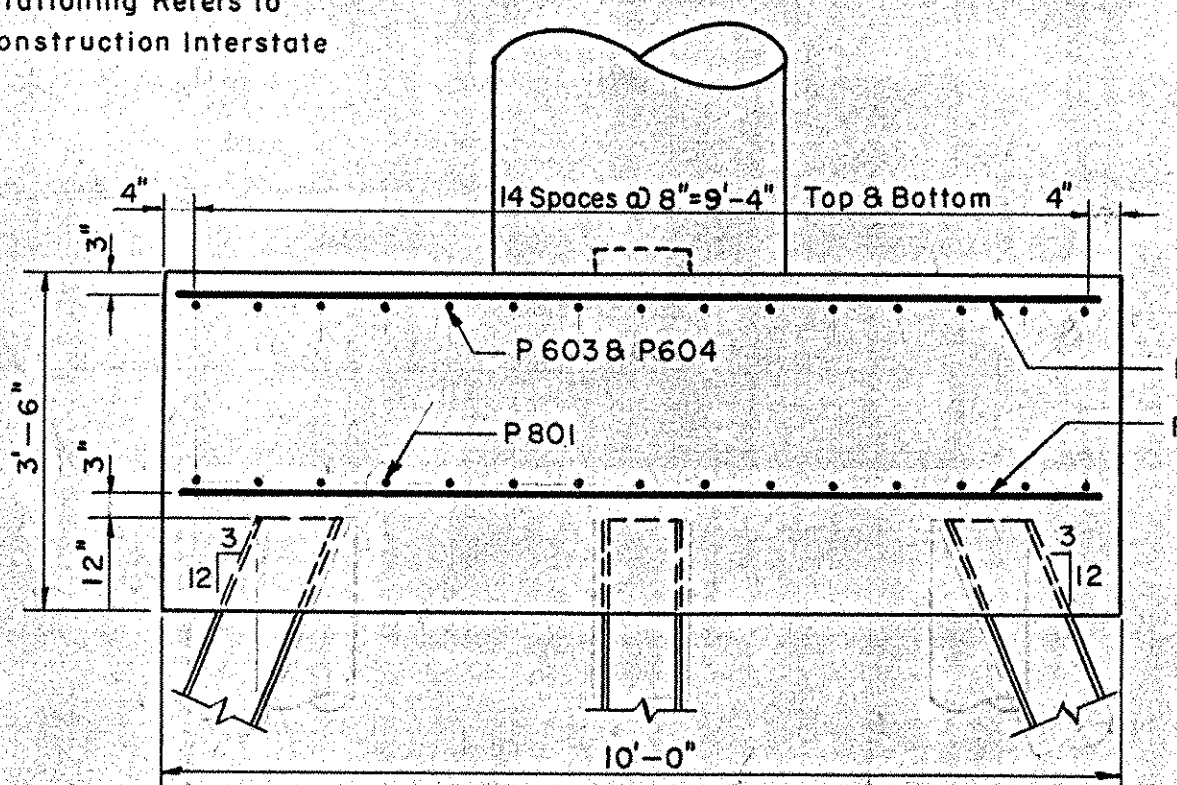


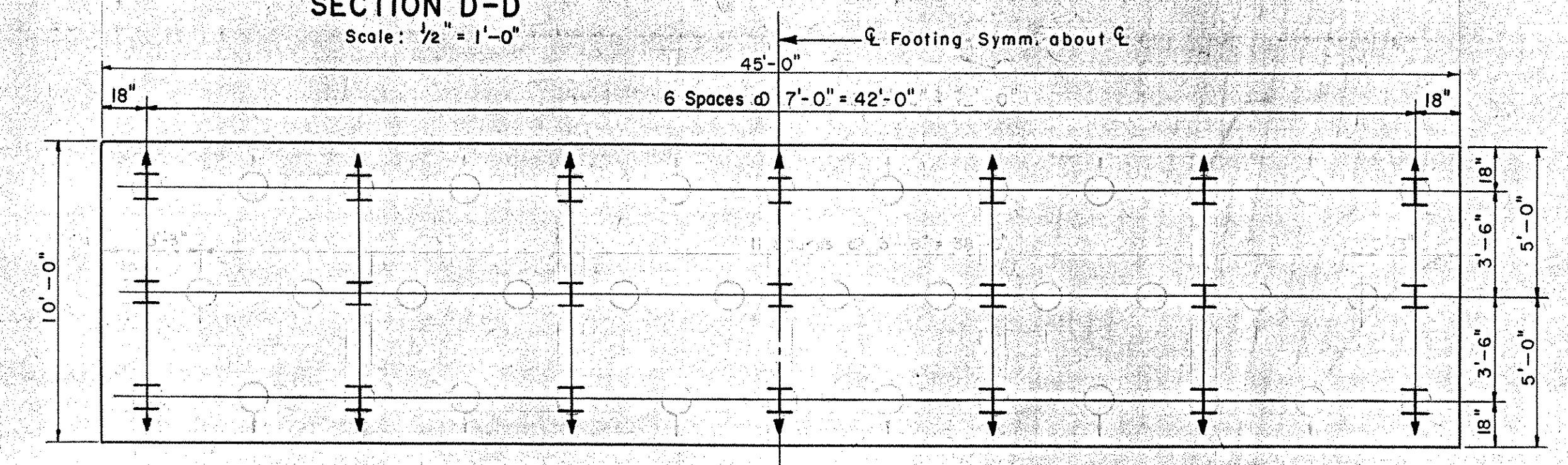
B. P. R. DIV. NO.	STATE	PROJECT NO.	SHEET NO.	TOTAL SHEETS
I	VT.	I-89-2 (7)	78	137



Note: All Stationing Refers to Construction Interstate



Beam No.	Pier F	Pier H	Pier G	Pier J	Beam No.	Pier F	Pier H	Pier G	Pier J				
31	363.05	363.22	36	363.89	364.12	46	26	362.28	362.43	41	363.17	363.53	51
32	363.24	363.30	37	363.83	364.46	47	27	362.43	362.53	42	363.25	363.88	52
33	363.37	363.40	38	363.94	364.56	48	28	362.56	362.61	43	363.33	363.98	53
34	363.51	363.61	39	364.05	364.69	49	29	362.68	362.69	44	363.45	364.09	54
35	363.79	363.59	40	364.16	364.56	50	30	362.95	362.75	45	363.55	363.93	55



NOTE: Bars prefixed "PF", "PG", "PH", "PJ" to be used in Piers F, G, H, & J respectively.

BOLTON IM 089-2(29)
BRIDGES 51 N&S
THIS SHEET FOR REFERENCE ONLY.

CONTRACT NO. 3

- Note 1. For Quantity Estimates See Sheet No. 77
- Note 2. All Piles to be Steel Piling 10 BP 42 (35 Ton Design Load)
- Note 3. Battered Piles Indicated thus ∇
- Note 4. Vertical Piles Indicated thus \perp
- Note 5. For Estimating Purposes the Length of Piles is Assumed to be 32' for all Piers

PIERS F, G, H, AND J
STATE OF VERMONT
DEPARTMENT OF HIGHWAYS
INTERSTATE PROJECT in the towns of
WATERBURY-BOLTON
INTERSTATE OVER STA. 1148+50
U. S. ROUTE 2 (REL.) STA. 30+00
THE CLARKESON ENGINEERING CO. INC.
CONSULTING ENGINEERS
BOSTON MASSACHUSETTS
SURVEYED BY: CHECKED BY: H.M.B.D.S. SCALE AS NOTED
DRAWN BY: R. J. F. IN CHARGE: J. V. B. DATE: 7-7-58
PROJECT NO. I-89-2(7) SHEET 270 OF 307