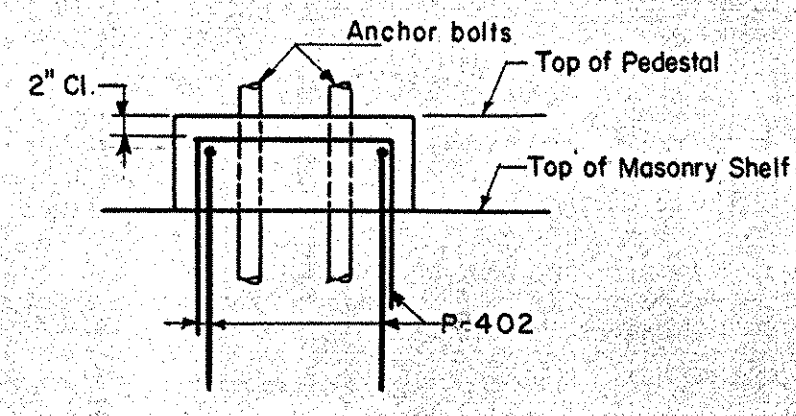
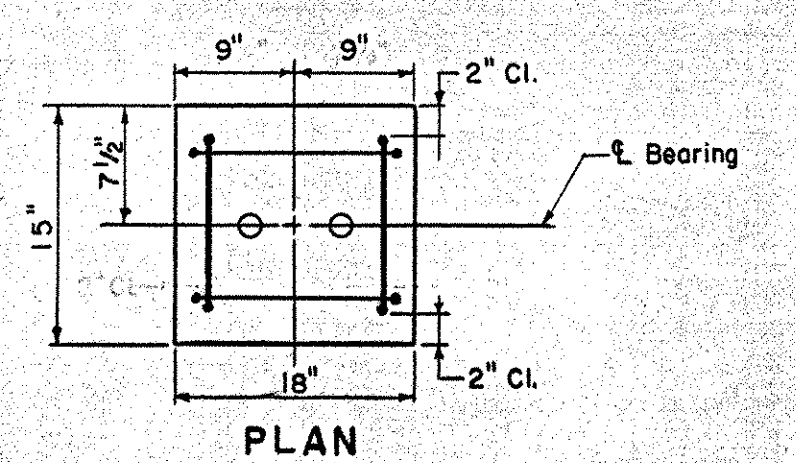
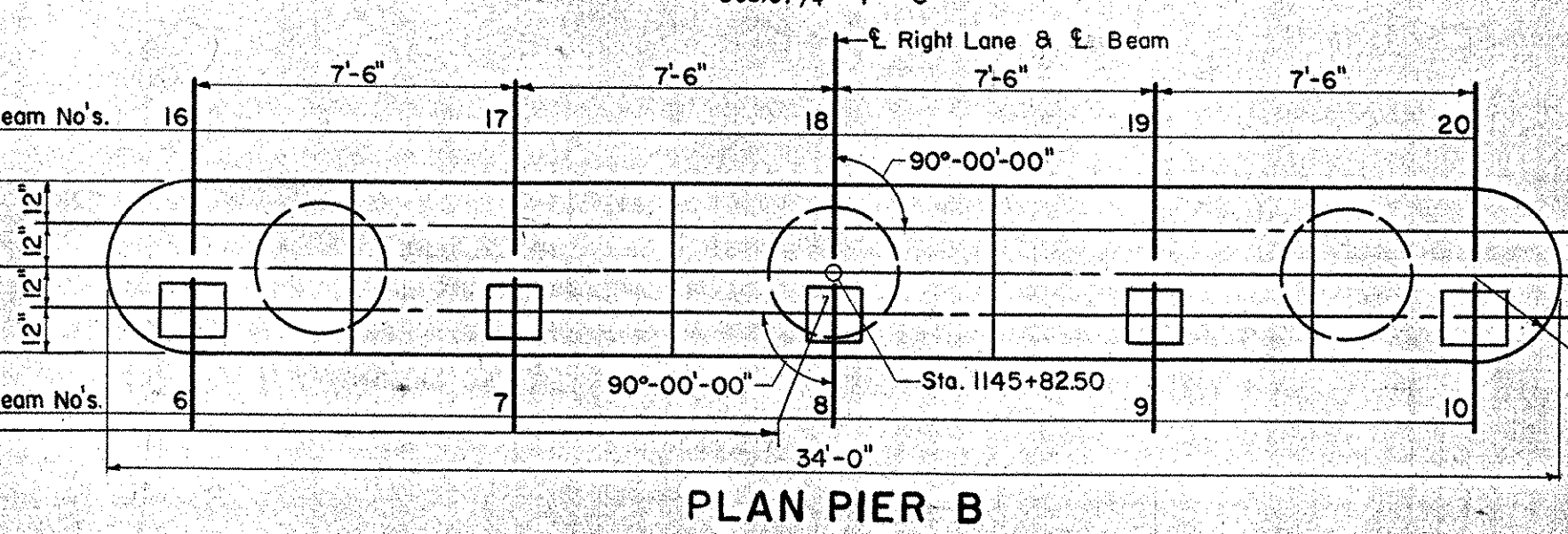
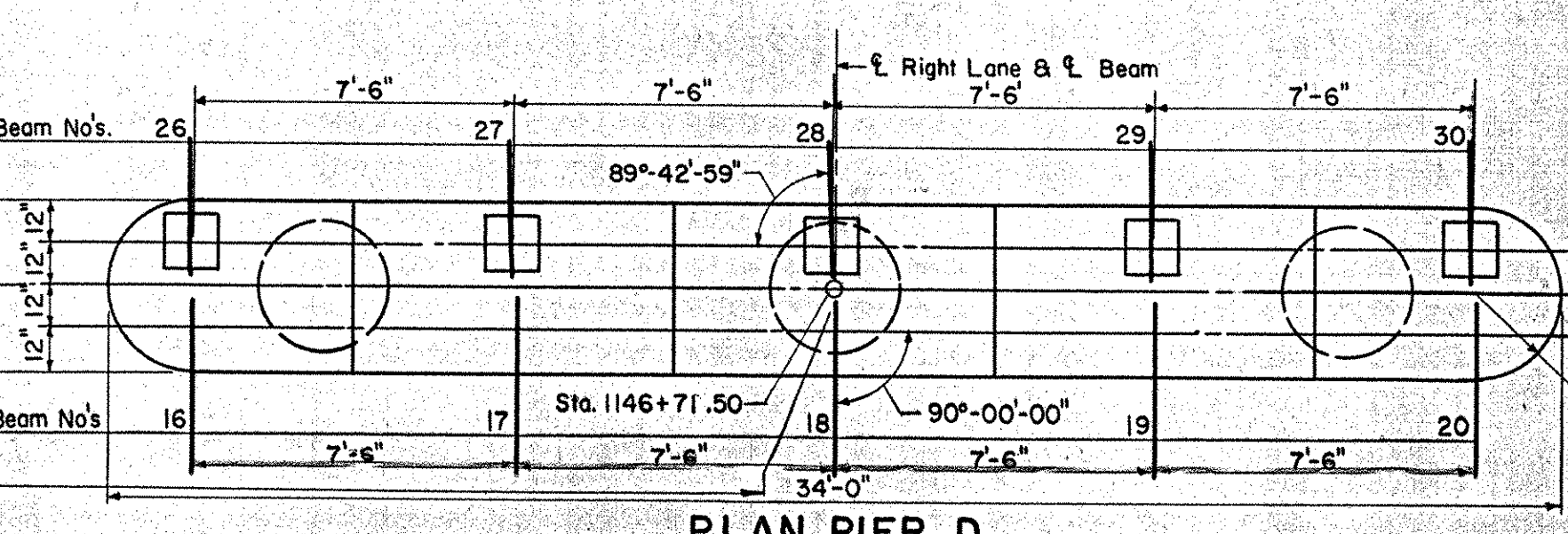
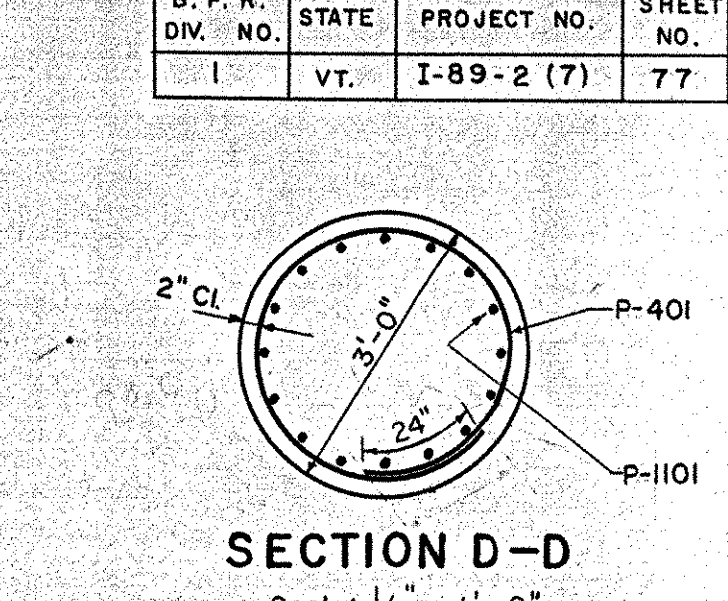
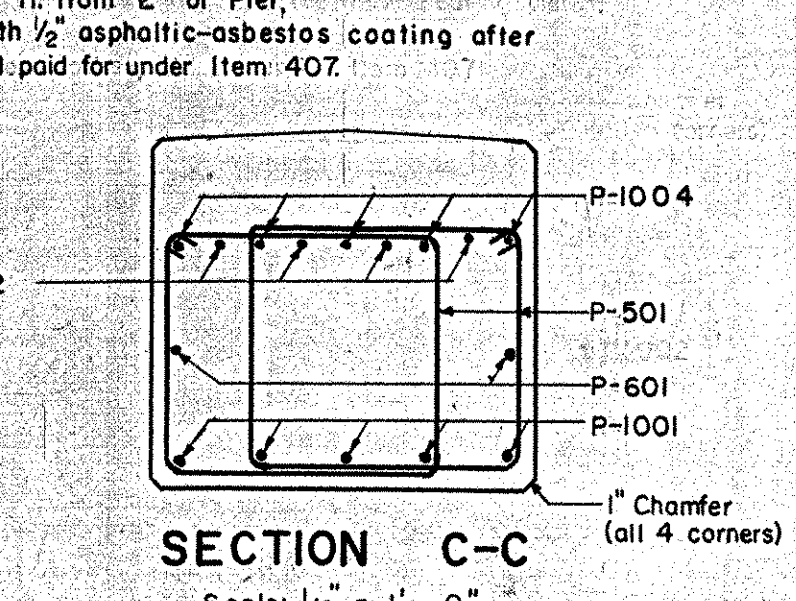
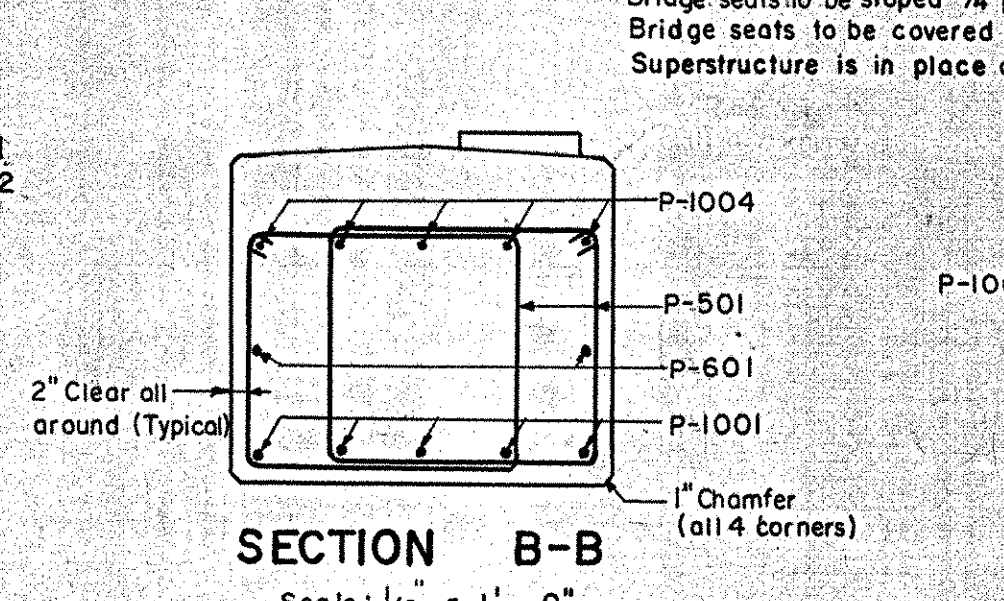
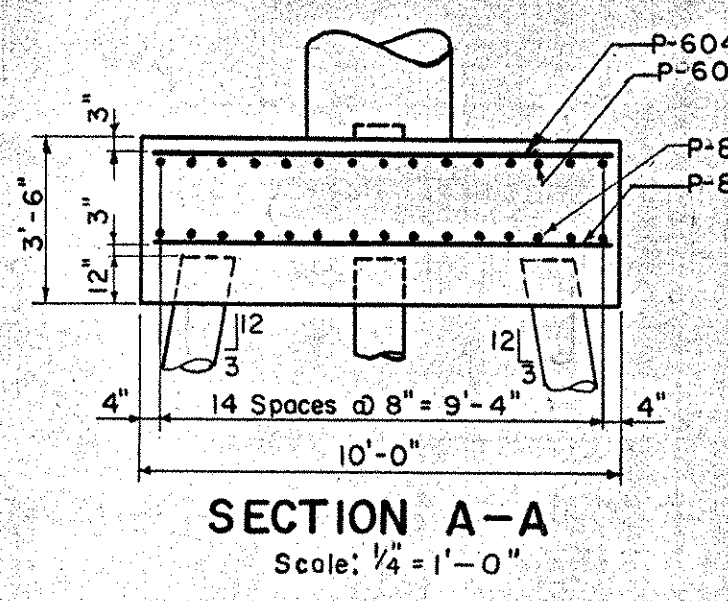
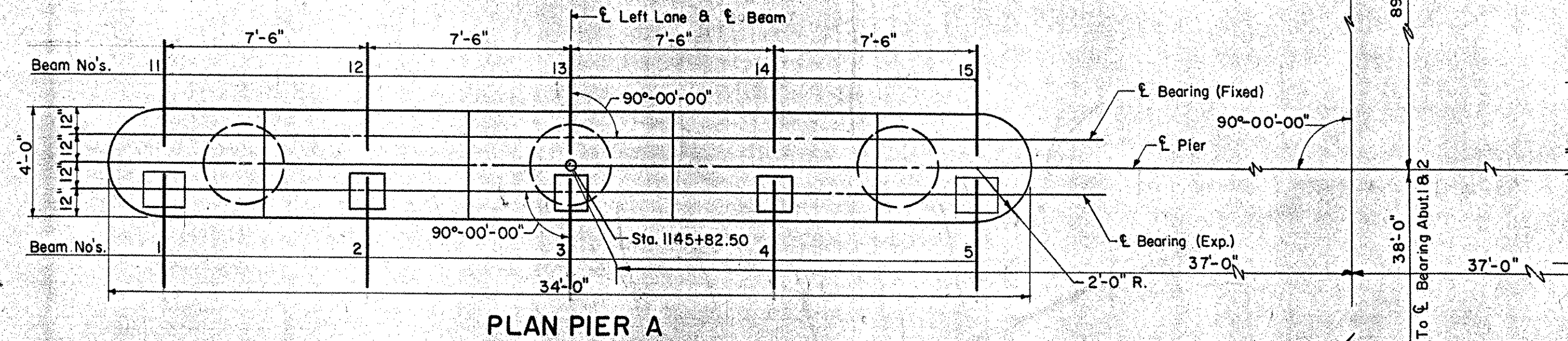
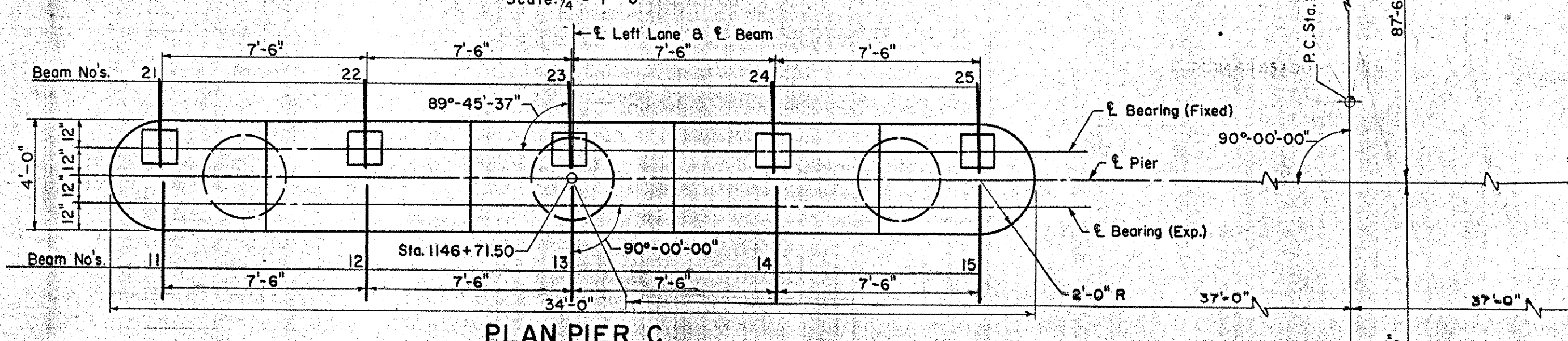
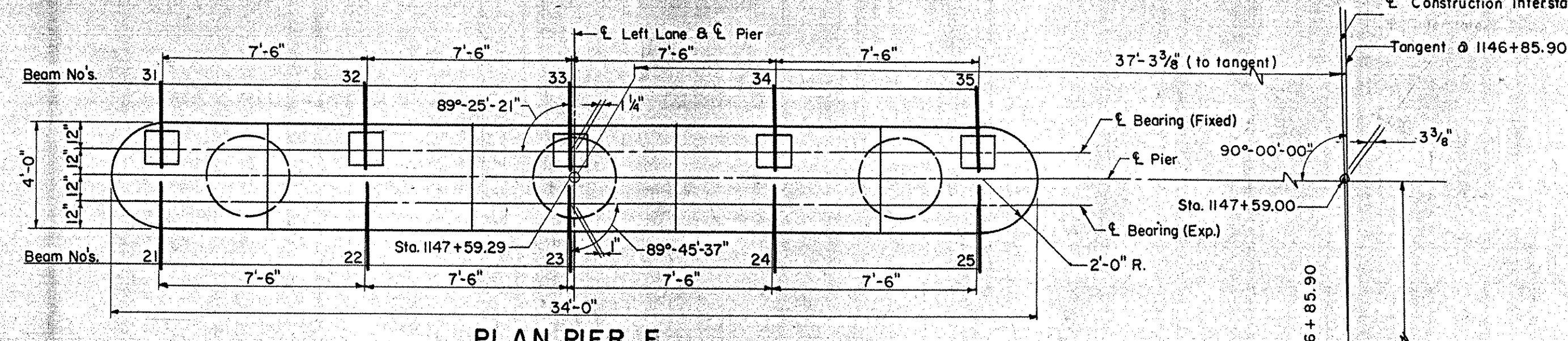


Bridge seats to be sloped 1/4" per ft. from C of Pier.
 Bridge seats to be covered with 1/2" asphaltic-asbestos coating after
 Superstructure is in place and paid for under Item 407.

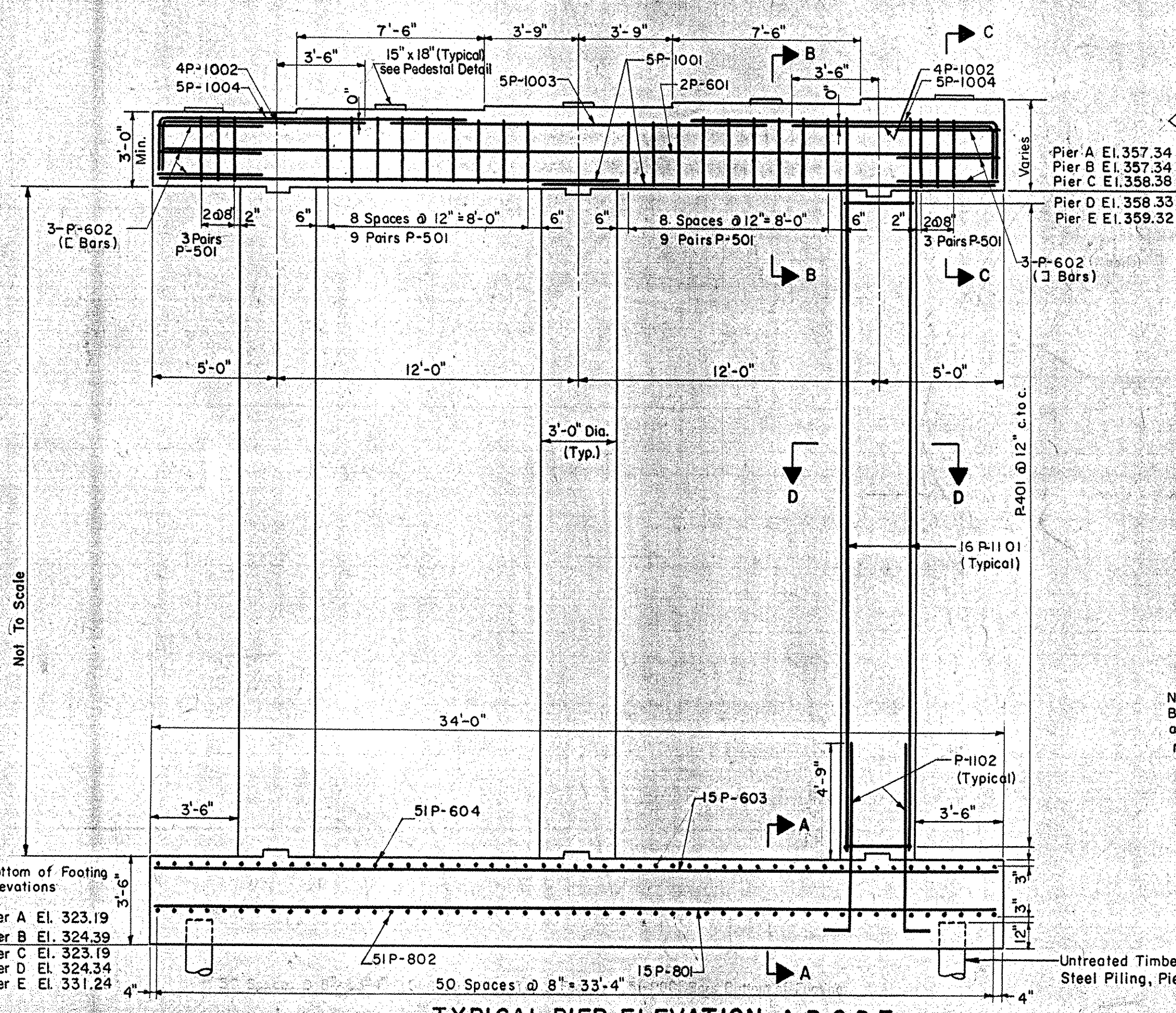


ELEVATION
 DETAIL OF
 PEDESTAL
 Scale: 1" = 1'-0"

Note: Pedestal reinforcing to be omitted if depth of pedestal is less than 3'.

Beam No.	Pier A	Pier C	Pier E	Pier B	Pier D
1	360.45	361.27	362.27	360.45	361.27
2	361.10	361.40	362.42	361.10	361.40
3	361.26	361.54	362.58	361.26	361.54
4	361.42	361.74	362.74	361.42	361.74
5	361.07	361.89	362.89	361.07	361.89

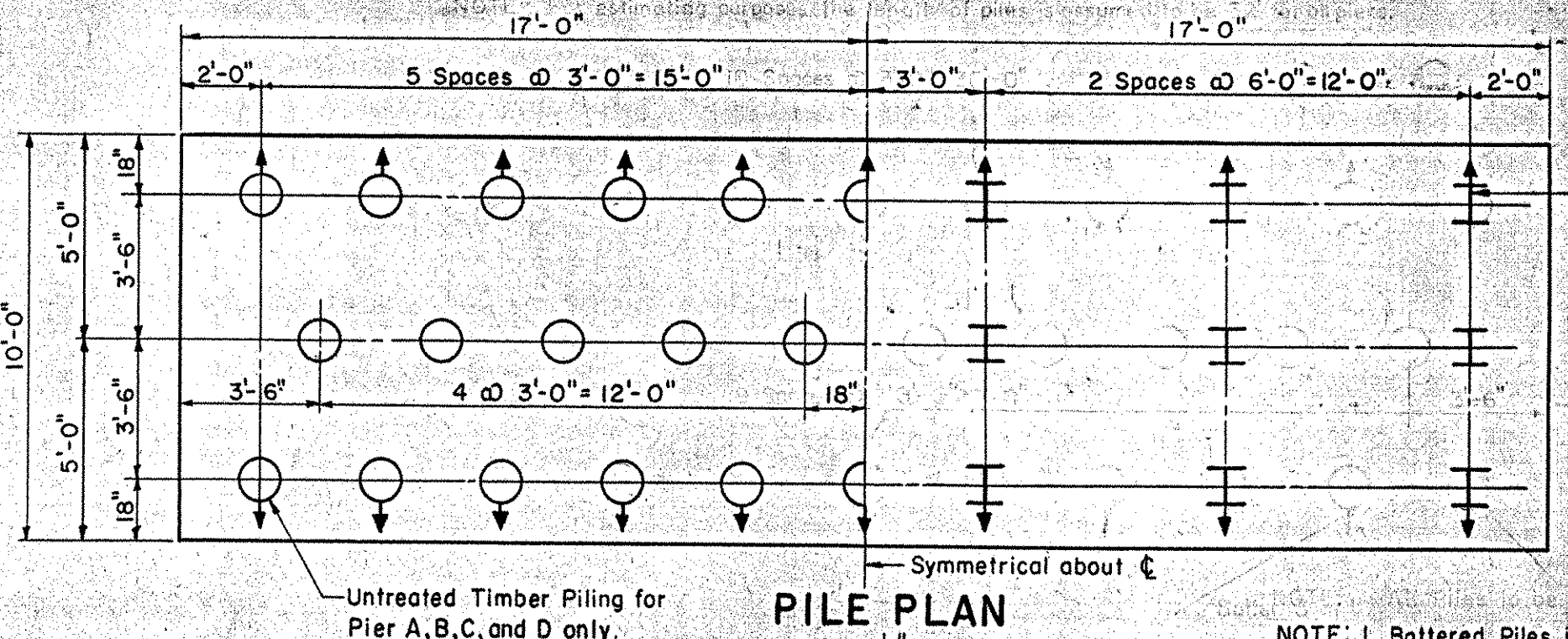
NOTE: All stationing refers to C of Construction Interstate.



ITEM NO.	DESCRIPTION	UNIT	PIER A				PIER B				PIER C				PIER D				
			NET	OVER-RUN	TOTAL	FINAL	NET	OVER-RUN	TOTAL	FINAL	NET	OVER-RUN	TOTAL	FINAL	NET	OVER-RUN	TOTAL	FINAL	
107	Structure Excavation	C.Y.	218	22	240	178	17	195	200	20	220	217	200	20	237	200	20	220	198
401B	Concrete Class B (Mod.)	C.Y.	86	4	90	86	85	85	86	86	85	85	86	86	85	85	85	85	85
402	Reinforcing Steel	L.B.S.	See Reinforcing Steel Schedule Sh. 83				See Reinforcing Steel Schedule Sh. 83				See Reinforcing Steel Schedule Sh. 83				See Reinforcing Steel Schedule Sh. 83				
407	Asphaltic-Asbestos Coating	S.Y.	15	None	15	15	None	15	15	None	15	15	None	15	15	None	15	15	15
502A	Untreated Timber Piling	L.F.	None	None	1095	None	None	1103	None	None	1032	None	None	1024	None	None	1024	None	1046

ITEM NO.	DESCRIPTION	UNIT	PIER F				PIER G				PIER H				PIER J				PIER E			
			NET	OVER-RUN	TOTAL	FINAL	NET	OVER-RUN	TOTAL	FINAL	NET	OVER-RUN	TOTAL	FINAL	NET	OVER-RUN	TOTAL	FINAL	NET	OVER-RUN	TOTAL	FINAL
107	Structure Excavation	C.Y.	167	16	183	171	16	187	17	17	17	17	17	17	17	17	17	17	17	17	17	17
401B	Concrete Class B (Mod.)	C.Y.	106	6	112	108	106	107	107	107	102	102	102	101	101	101	101	101	101	101	101	101
402	Reinforcing Steel	L.B.S.	See Reinforcing Steel Schedule Sh. 83				See Reinforcing Steel Schedule Sh. 83				See Reinforcing Steel Schedule Sh. 83				See Reinforcing Steel Schedule Sh. 83				See Reinforcing Steel Schedule Sh. 83			
407	Asphaltic-Asbestos Coating	S.Y.	22	None	22	21	None	21	21	None	21	21	None	21	22	None	22	21	15	None	15	15
504	Steel Piling	L.F.	672	None	672	622	672	None	672	672	None	672	672	None	672	672	None	672	672	672	672	672

NOTE: Bar prefixed "PA", "PB", "PC", "PD" & "PE" are to be used in Piers A, B, C, D & E, respectively.



BOLTON IM 089-2(29)
 BRIDGES 51 N&S
 THIS SHEET FOR REFERENCE ONLY.

CONTRACT NO. 3

PIERS, A, B, C, D AND E

STATE OF VERMONT
 DEPARTMENT OF HIGHWAYS

INTERSTATE PROJECT in the town of
WATERBURY-BOLTON

INTERSTATE OVER STA. 1148+50
 U.S. ROUTE 2 (REL.) STA. 30+00

THE CLARKESON ENGINEERING CO., INC.
 CONSULTING ENGINEERS

BOSTON MASSACHUSETTS

SURVEYED BY: J.V.B. CHECKED BY: D.S.H.M.
 DRAWN BY: R.J.F. IN CHARGE: J.V.B. SCALE AS NOTED
 DATE: 7-7-58

PROJECT NO. I-89-2 (7) SHEET 269 OF 307