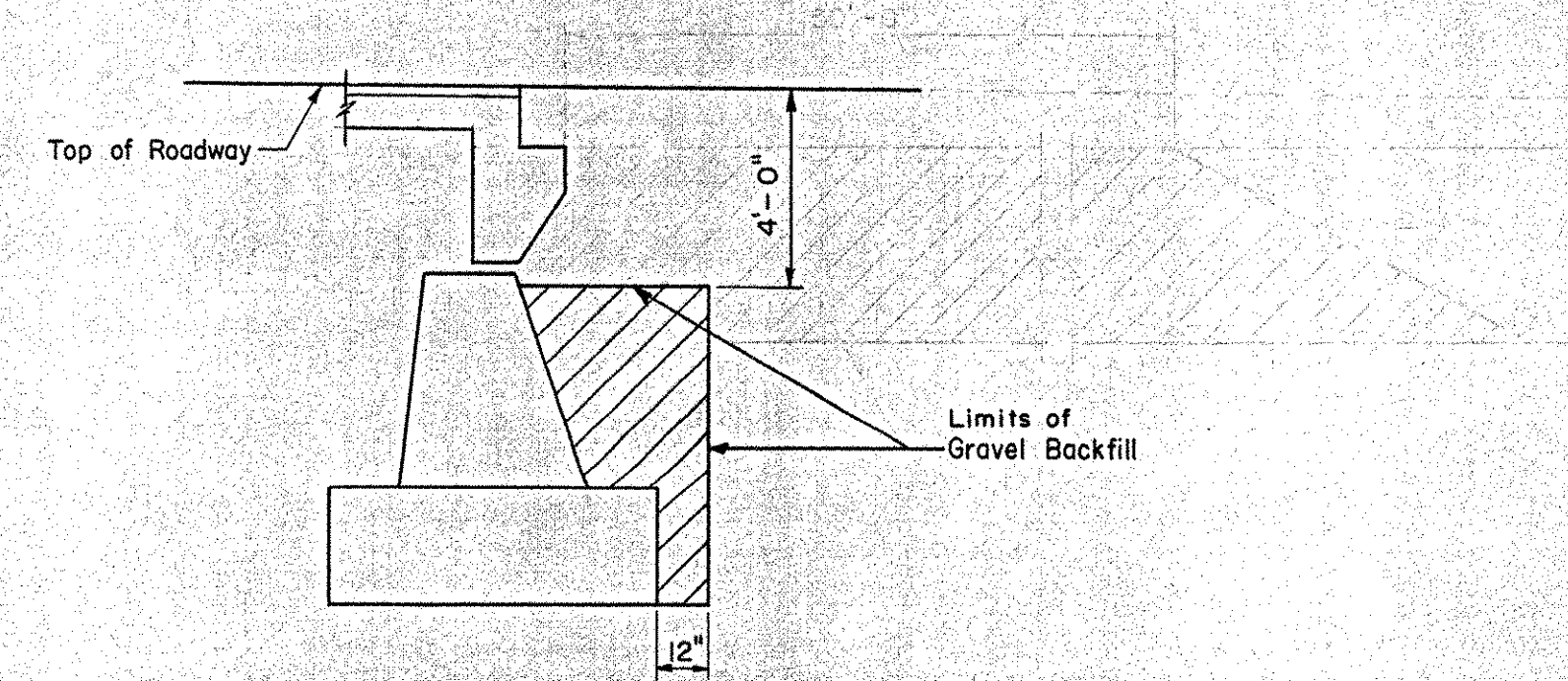
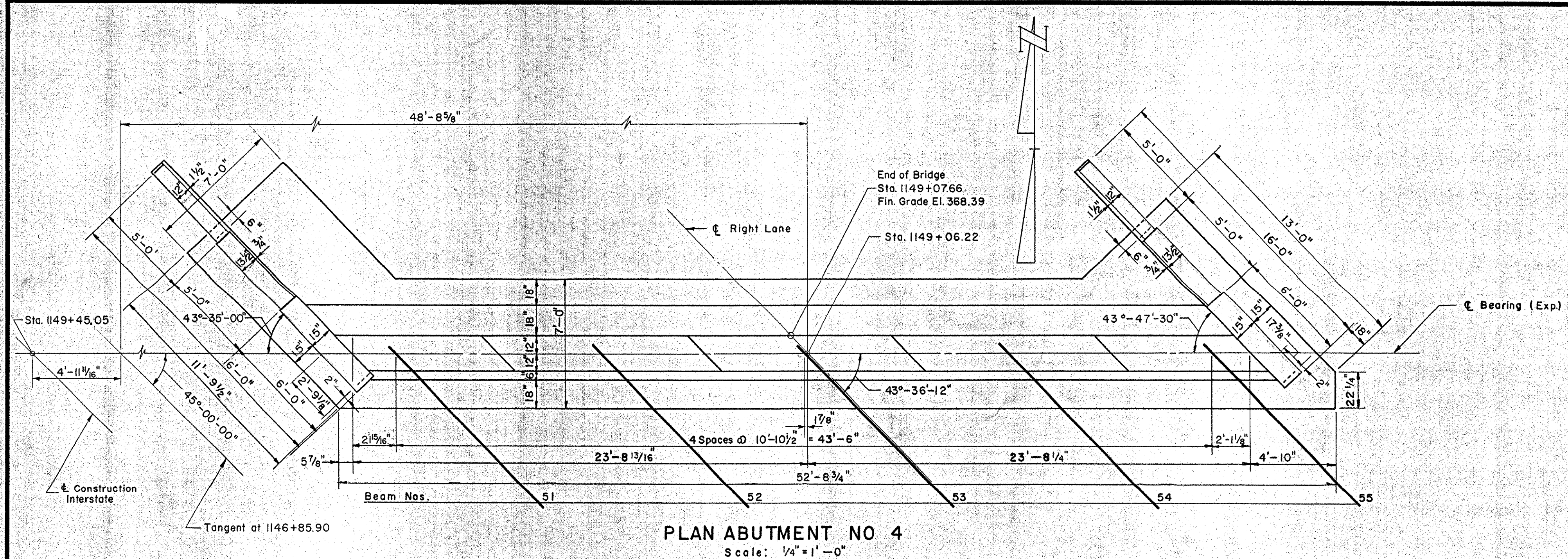
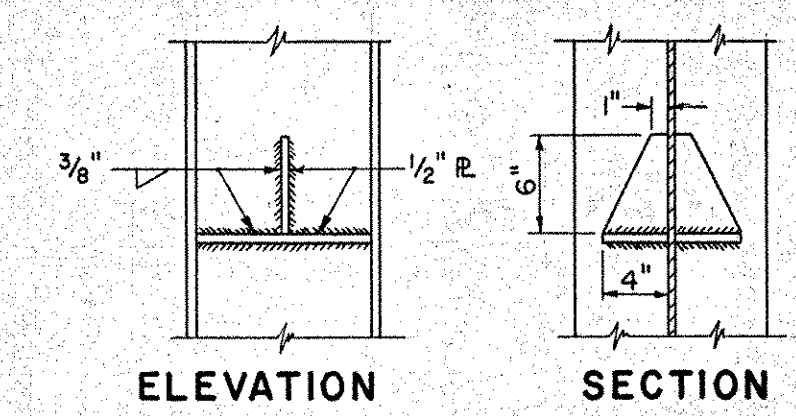


B. P. R. DIV. NO.	STATE	PROJECT NO.	SHEET NO.	TOTAL SHEETS
I	VT.	I-89-2(7)	75	137

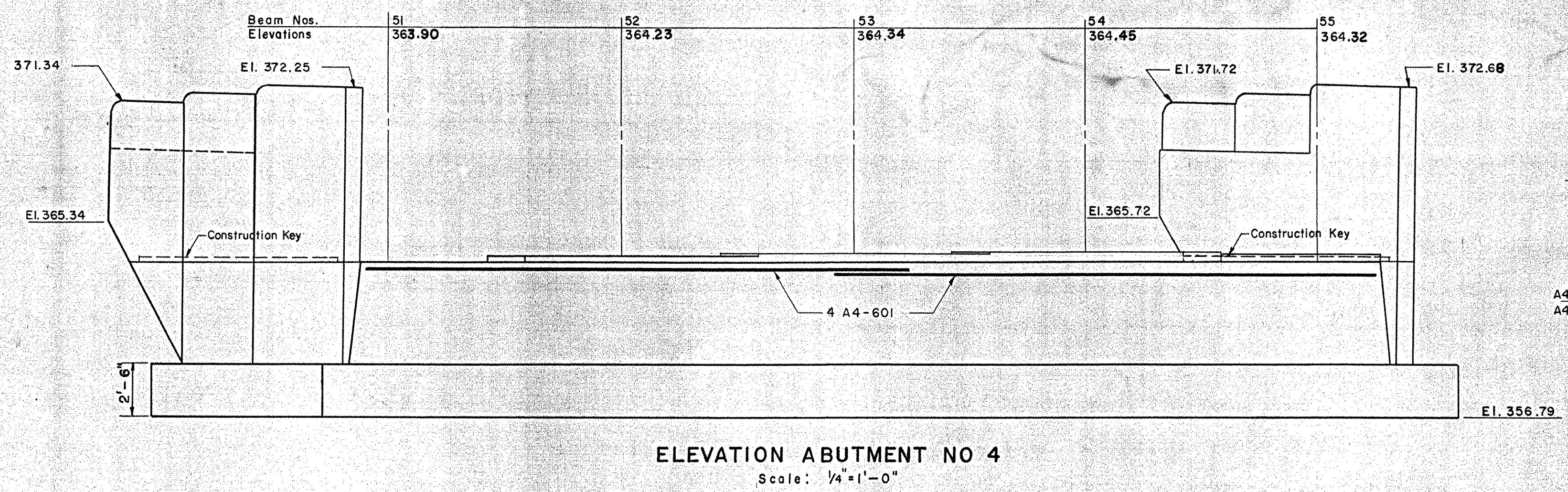


LIMITS OF GRAVEL BACKFILL
Scale: 1/4" = 1'-0"

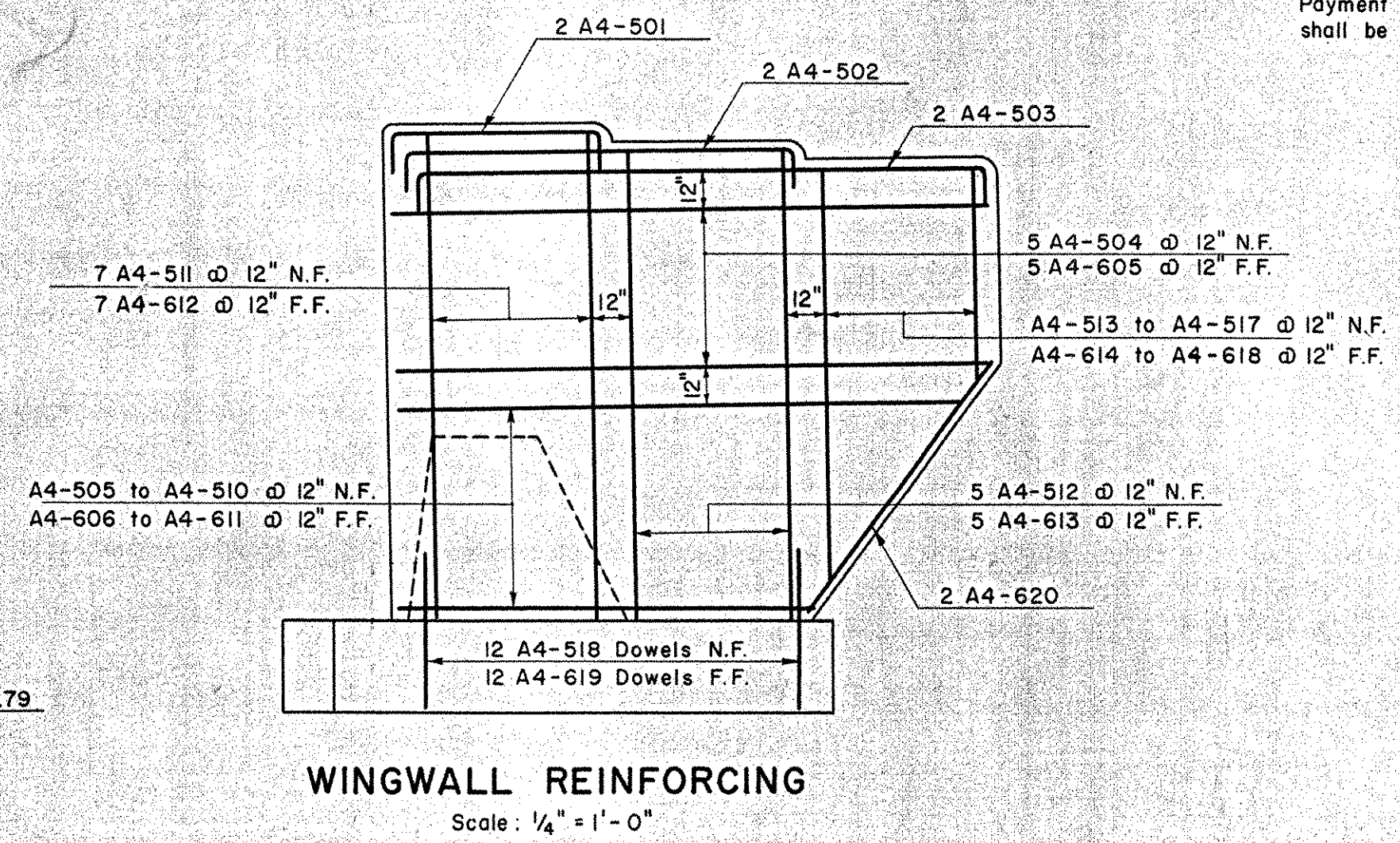


DETAIL OF CORE STOPPER FOR PILING
Scale: 1" = 1'-0"

NOTE: Core stoppers to be used if so designated by the Engineer at the time of driving the piling. Payment for core stoppers, if used, shall be included under Item No. 504, "Steel Piling".



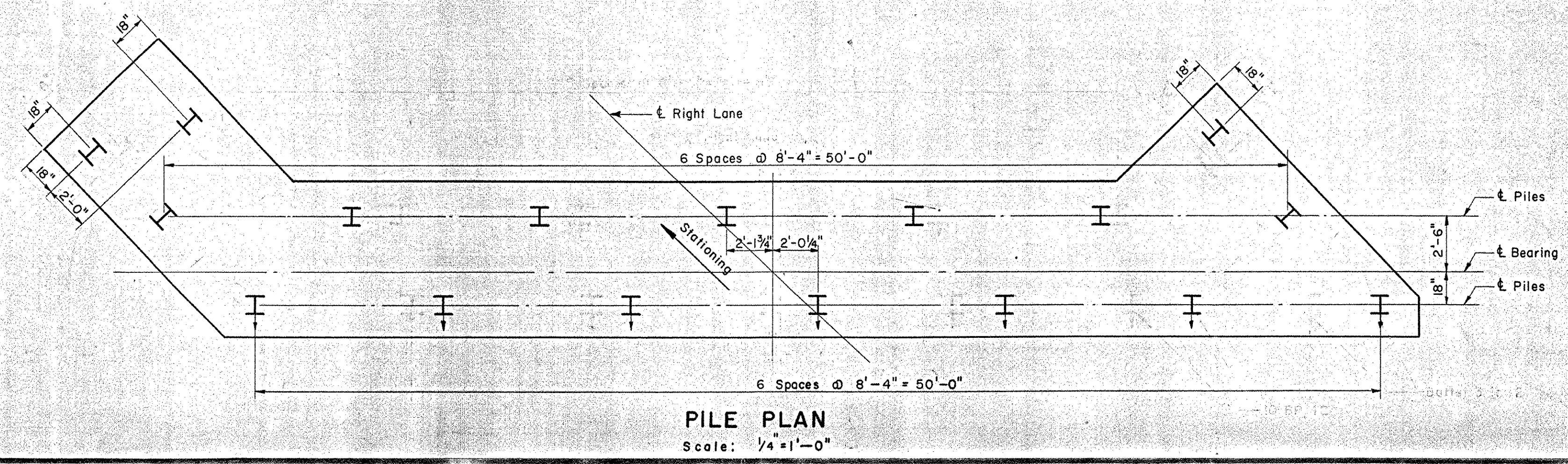
ELEVATION ABUTMENT NO 4
Scale: 1/4" = 1'-0"



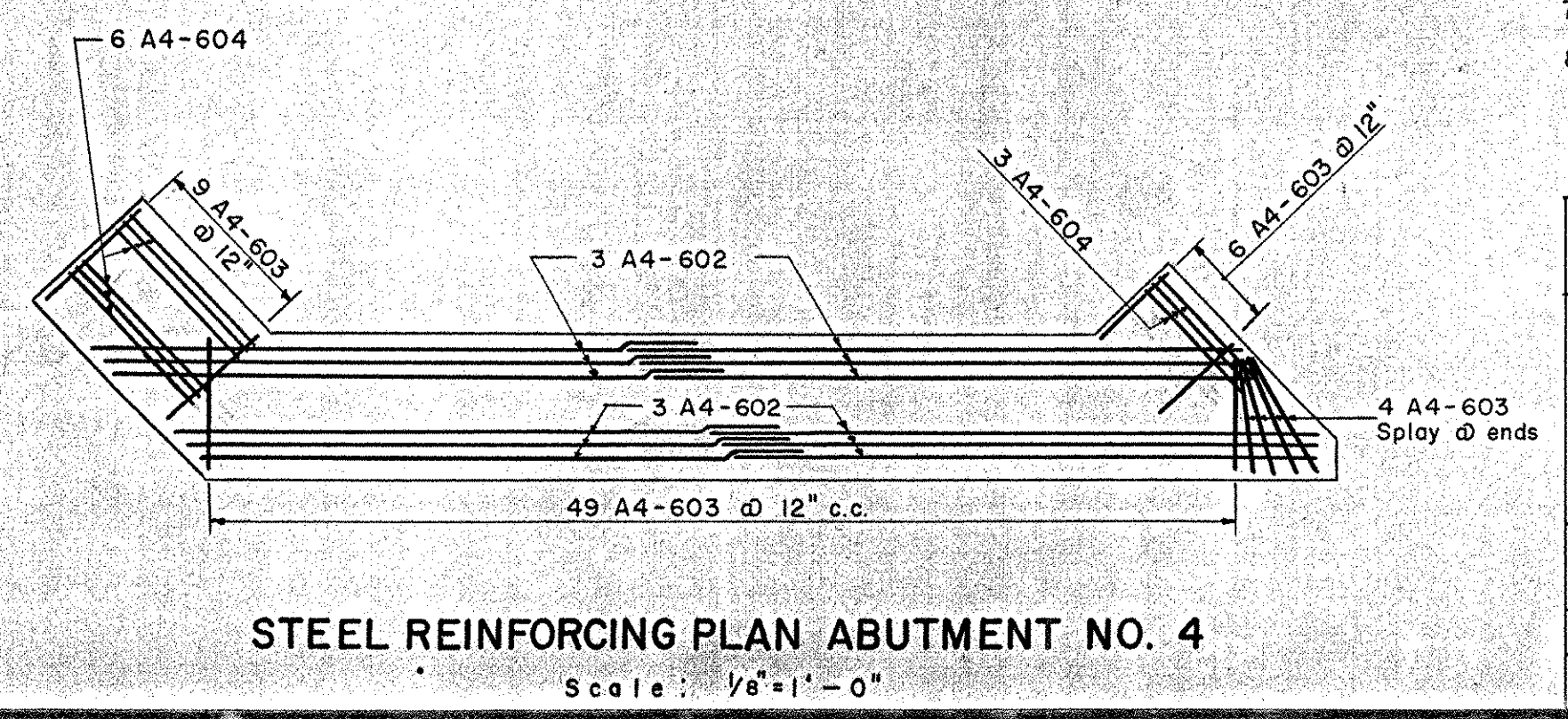
WINGWALL REINFORCING
Scale: 1/4" = 1'-0"

BOLTON IM 089-2(29)
BRIDGES 51 N&S
THIS SHEET FOR REFERENCE ONLY.

- NOTES:
1. For typical abutment section see Sheet No. 73
 2. All piles to be IO BP 42 (35 Ton Design Load)
 3. Battered piles indicated thus: Vertical piles indicated thus:
 4. For estimating purposes, the length of Piles is assumed to be 28'
 5. For estimated quantities see Sheet No. 73
 6. For General Notes see Sheet No. 73
 7. For Additional Wing Wall Details see Sheet No. 76
 8. Piles must be driven to at least El. 330 unless otherwise directed in writing by the Engineer.



PILE PLAN
Scale: 1/4" = 1'-0"



STEEL REINFORCING PLAN ABUTMENT NO. 4
Scale: 1/8" = 1'-0"

ABUTMENT # 4

STATE OF VERMONT
DEPARTMENT OF HIGHWAYS
INTERSTATE PROJECT in the towns of
WATERBURY - BOLTON
INTERSTATE OVER STA. 1148+50
U.S. ROUTE 2 (REL.) OVER STA. 30+00
THE CLARKESON ENGINEERING CO., INC.
CONSULTING ENGINEERS
BOSTON MASSACHUSETTS
SCALE: AS NOTED
DATE: 7-7-58
PROJECT NO. I-89-2(7) SHEET 267 OF 307