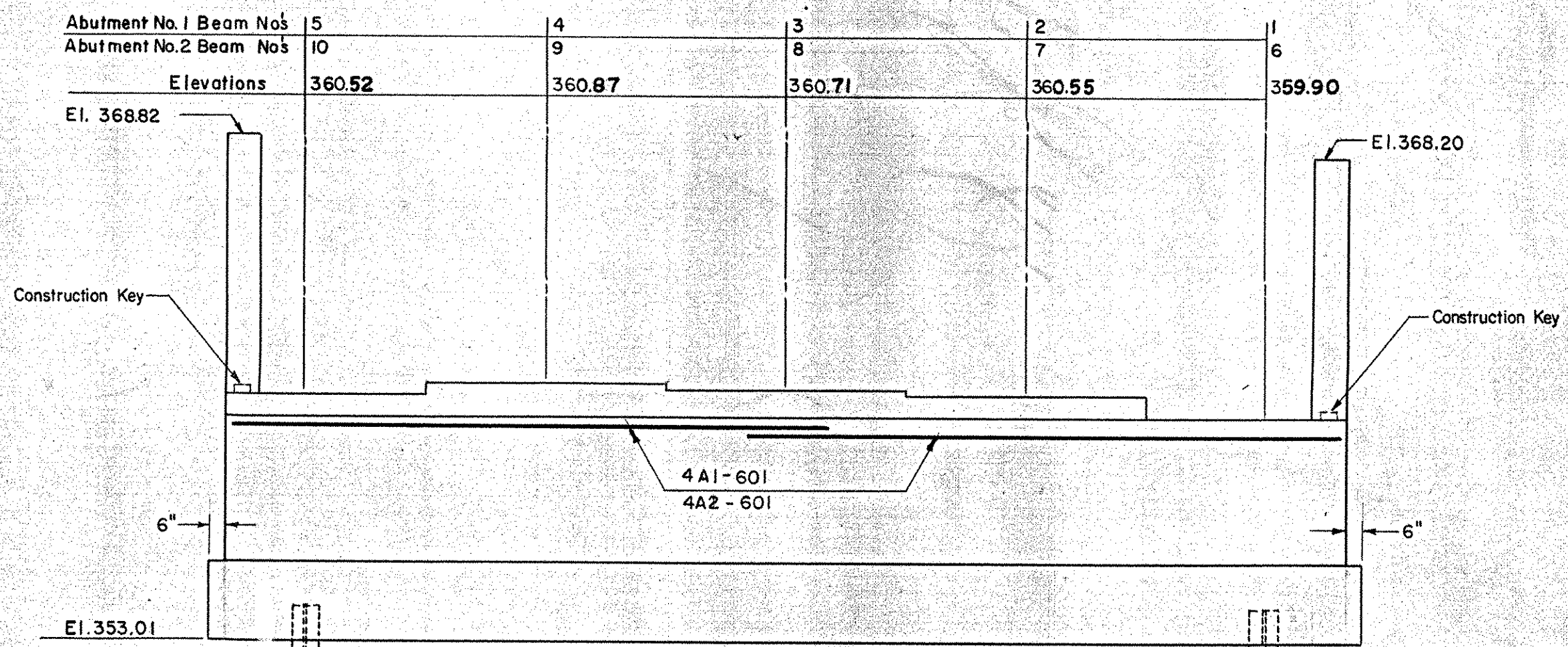
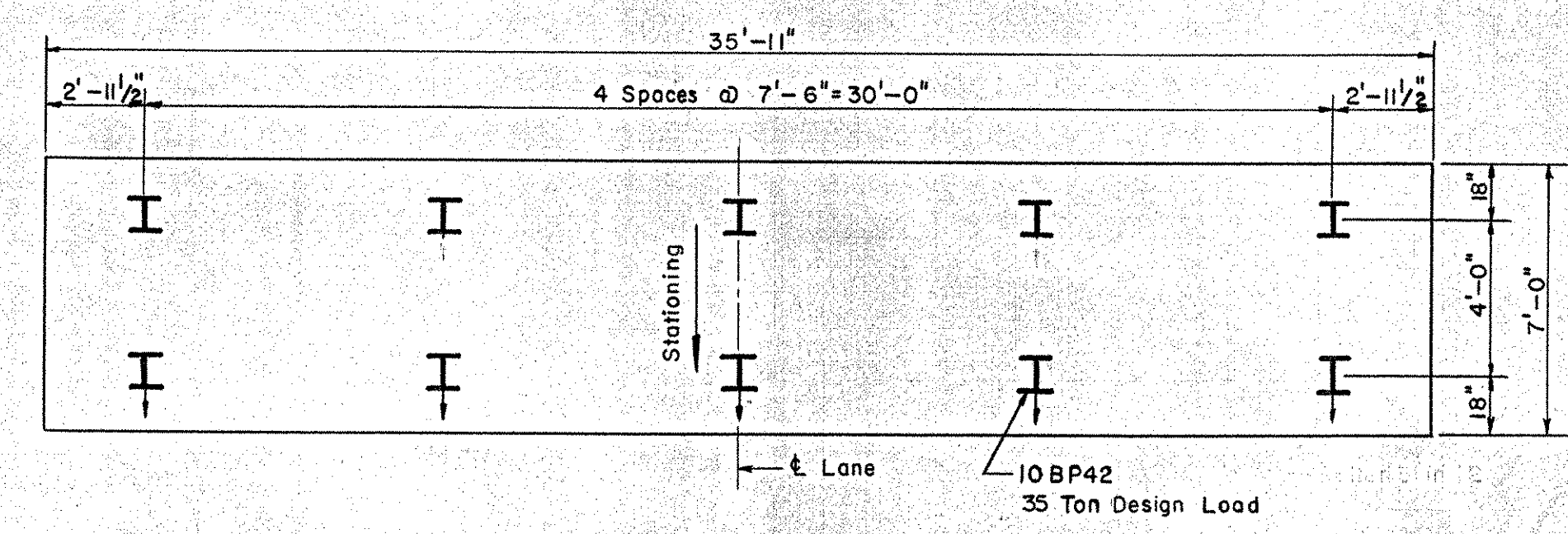


**PLAN ABUTMENT NO. 1
PLAN ABUTMENT NO. 2 (SIMILAR)**
Scale: 1/4" = 1'-0"

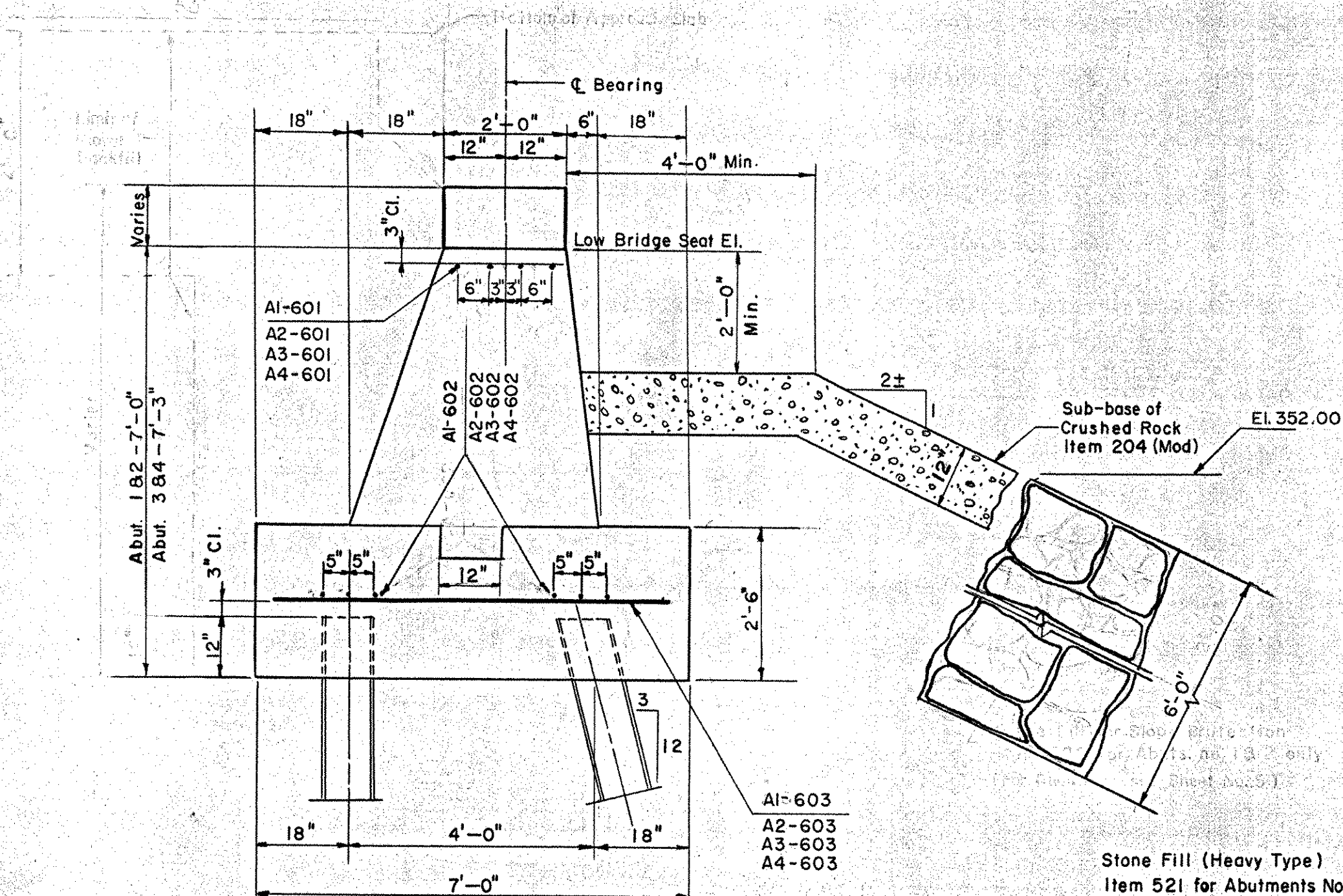


**ELEVATION ABUTMENT NO. 1
ELEVATION ABUTMENT NO. 2 (SIMILAR)**
Scale: 1/4" = 1'-0"

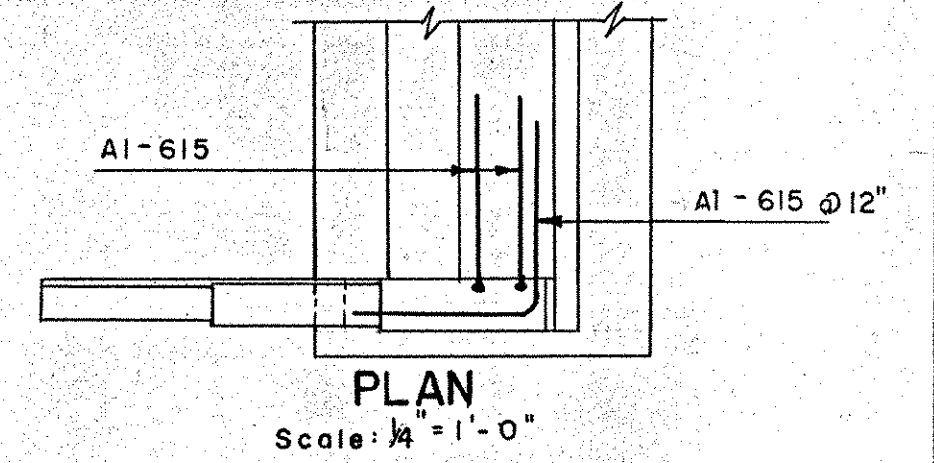


PILE PLAN
Scale: 1/4" = 1'-0"

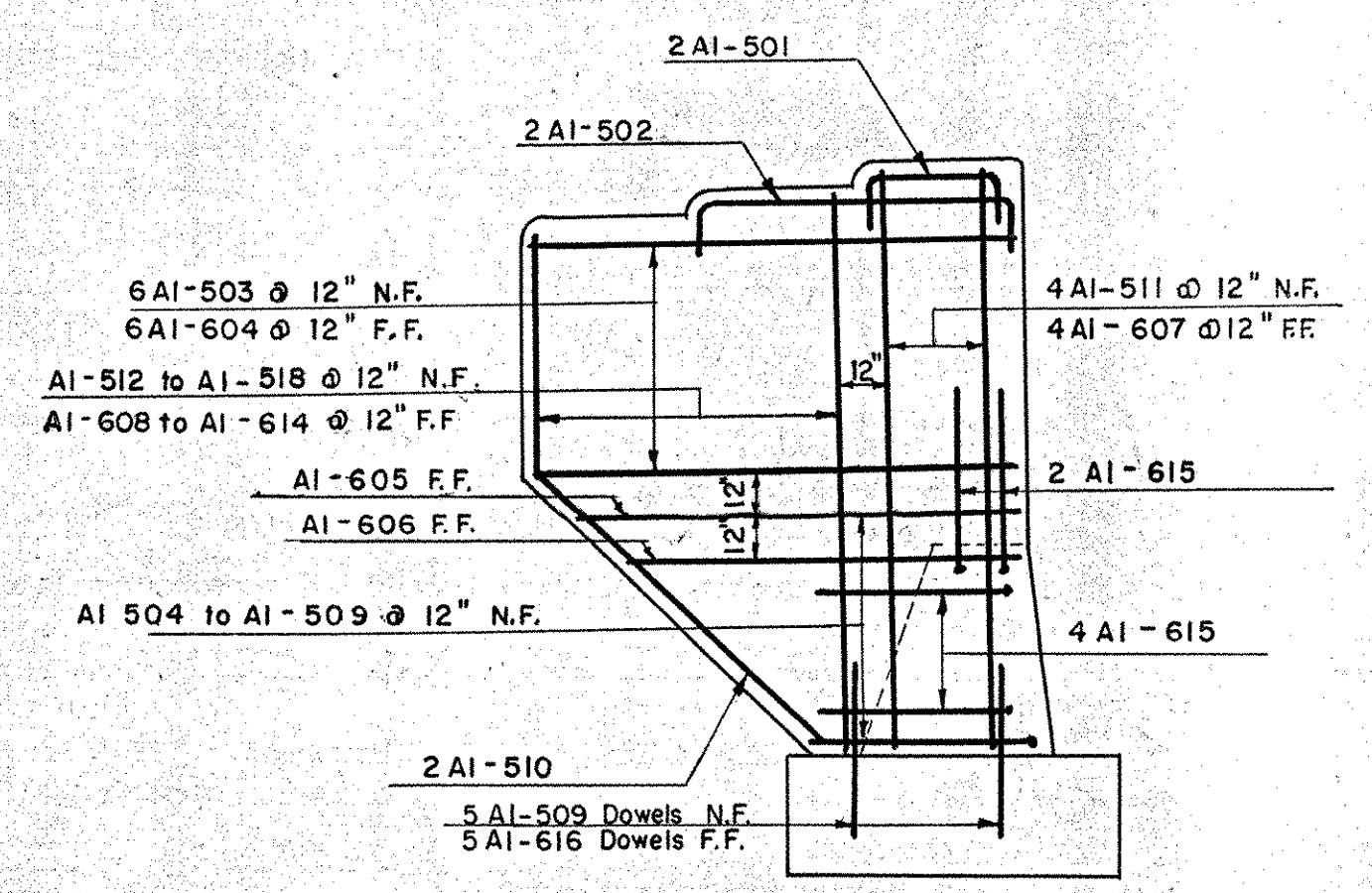
NOTE: 1. Battered piles indicated thus: ; Vertical Piles indicated thus: .
2. For estimating purposes, the length of piles is assumed to be 34'-0".
3. Piles must be driven to at least El. 320.0 unless otherwise directed in writing by the Engineer.



TYPICAL ABUTMENT SECTION
Scale: 1/2" = 1'-0"



PLAN
Scale: 1/4" = 1'-0"



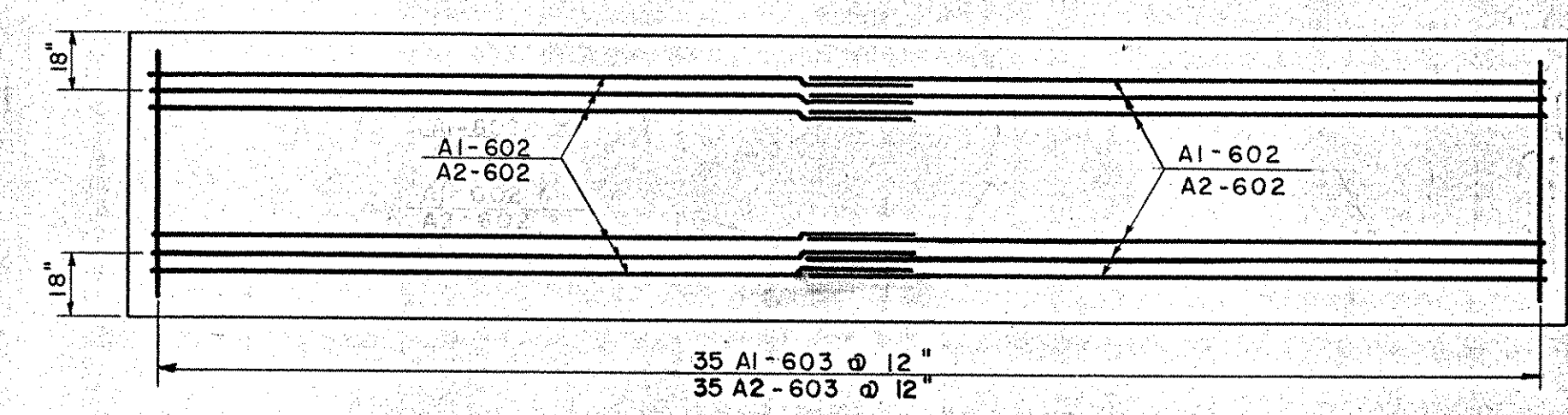
**TYPICAL WINGWALL REINFORCING
ABUTMENT No. 1 & 2**
Scale: 1/4" = 1'-0"

Note: Reinforcing as shown is for Abut. No. 1 prefixed A1. Reinforcing for Abut. No. 2 identical except prefixed A2.

ESTIMATED QUANTITIES

ITEM NO.	DESCRIPTION	UNIT	ABUTMENT NUMBER 1				ABUTMENT NUMBER 2				ABUTMENT NUMBER 3				ABUTMENT NUMBER 4			
			NET	OVER-RUN	TOTAL	FINAL	NET	OVER-RUN	TOTAL	FINAL	NET	OVER-RUN	TOTAL	FINAL	NET	OVER-RUN	TOTAL	FINAL
107	Structure Excavation	C.Y.	22	13	35	13	26	39	26	26	52	31	22	53	22	24	46	30
204	Sub-base of Crushed Rock (Mod)	C.Y.	27	4	31	25	4	29	25	9	34	95	9	104	10	10	20	104
222	Gravel Backfill	C.Y.	23	6	29	23	6	29	23	4	27	4	31	4	35	4	39	34
401-B	Concrete Class B (Mod.)	C.Y.	51	3	54	51	3	54	51	3	54	91	9	100	8	8	108	83
402	Reinforcing Steel	LBS.	See Reinforcing Steel Schedule Sheet No. 82															
407	Asphaltic-Asbestos Coating	S.Y.	8	None	8	4	None	4	4	None	4	5	None	5	None	5	5	5
504	Steel Piling	L.F.	340	None	340	368	340	None	340	355	478	None	478	483	478	None	478	497

- NOTES
- Prior to driving the piles, rock free fill shall be placed under the abutment area to approximately the pile cutoff elevation, and with a surface area at least two feet outside the abutment.
 - After piles are driven, the fill is to be excavated to the elevation of the footing.
 - Slope all bridge seats 1/2" per foot.
 - The entire exposed top surface of Bridge Seats to be covered with 1/2" of Asphaltic-Asbestos coating after superstructure is in place.
 - A layer of Sub-Base of Crushed Rock (Mod.) Item 204 shall be placed in front of the Abutments; one (1) foot thick, 19 feet long on the slopes of Abutments #1 and #2, and 70 feet long on the slopes of Abutments #3 and #4. A layer of Stone Fill (Heavy Type) Item 521, six (6) feet thick, 53 feet long shall be placed on the slopes in front of Abutments #1 and #2 to the limits shown on the Plan Sheet No. 68. Stone Fill (Heavy Type) 6'-0" deep shall be placed on the Westerly bank to E.L. 337.0. For limits see Sheet No. 68.
 - For additional wingwall details see Sheet No. 76.
 - For Limits of Gravel Backfill see Sheet No. 75.



**STEEL REINFORCING PLAN
ABUTMENT No. 1 & 2**
Scale: 1/4" = 1'-0"

Note: Bars prefixed A2 to be used in Abutment No. 2.

BOLTON IM 089-2(29)
BRIDGES 51 N&S
THIS SHEET FOR REFERENCE ONLY.

CONTRACT NO. 3

ABUTMENTS #1 AND #2
STATE OF VERMONT
DEPARTMENT OF HIGHWAYS
INTERSTATE PROJECT in the towns of
WATERBURY - BOLTON
INTERSTATE OVER STA. 1148+50
U.S. ROUTE 2 (REL.) STA 30+00
THE CLARKESON ENGINEERING CO., INC.
CONSULTING ENGINEERS
BOSTON MASSACHUSETTS
SURVEYED BY A.L.L. CHECKED BY D.S.H.M. SCALE AS NOTED
DRAWN BY A.L.L. IN CHARGE J.V.B. DATE 7-7-58
PROJECT NO. I-89-2(7) SHEET 265 OF 307