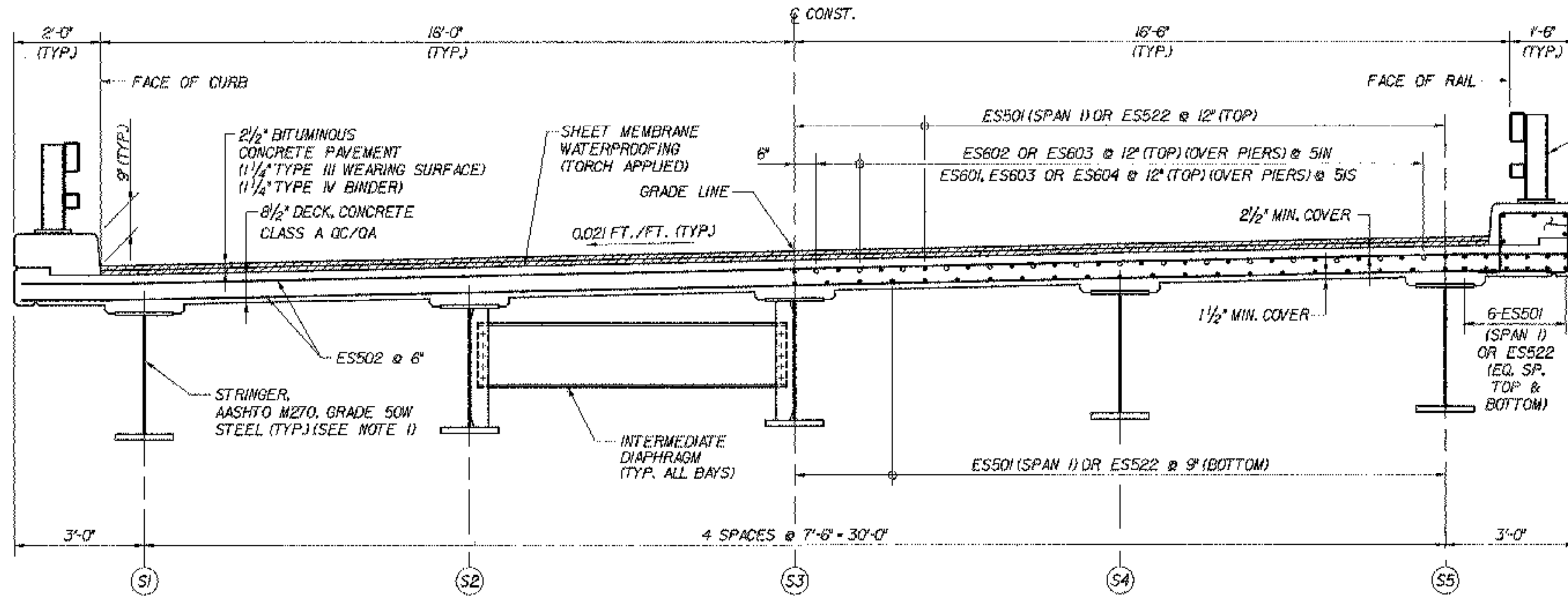
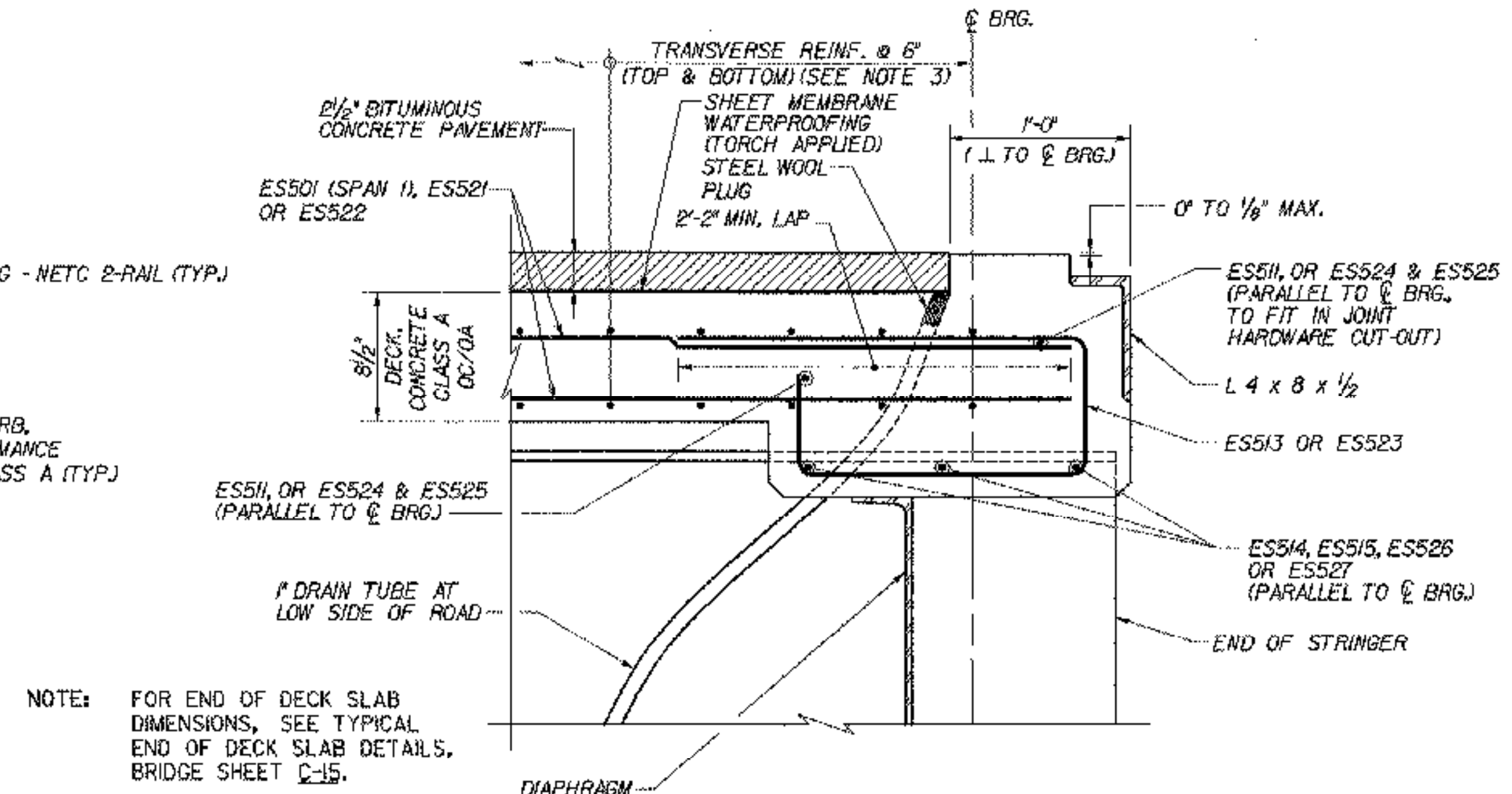


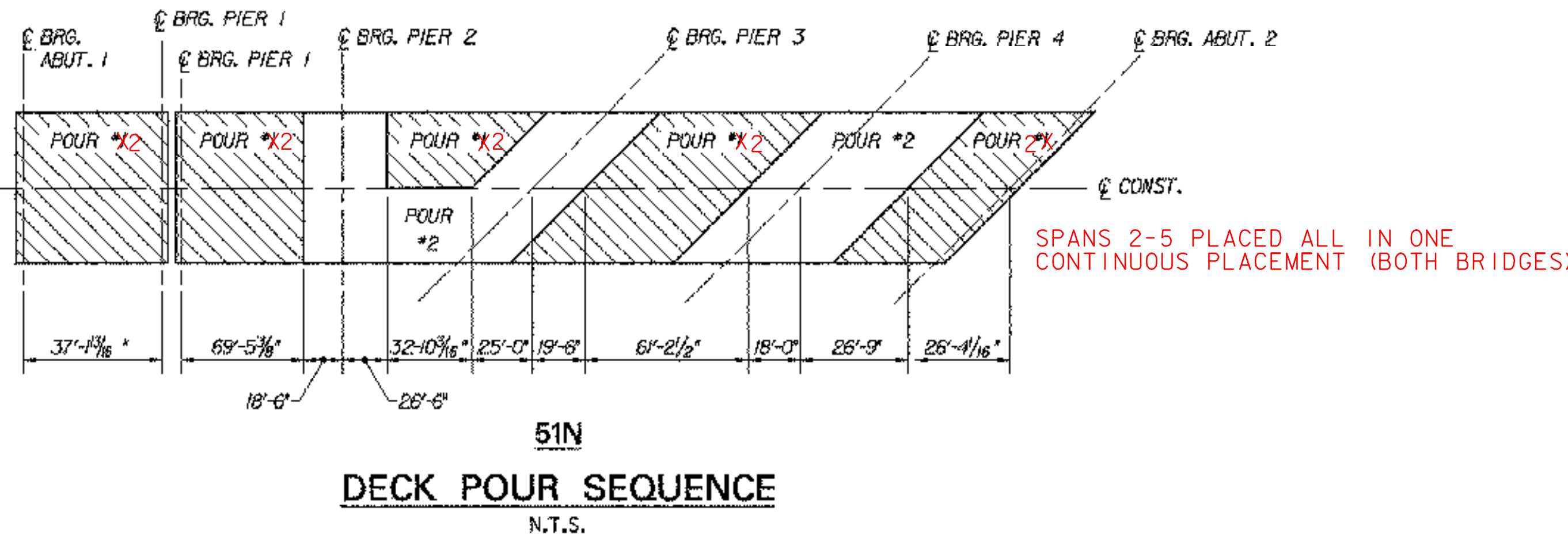
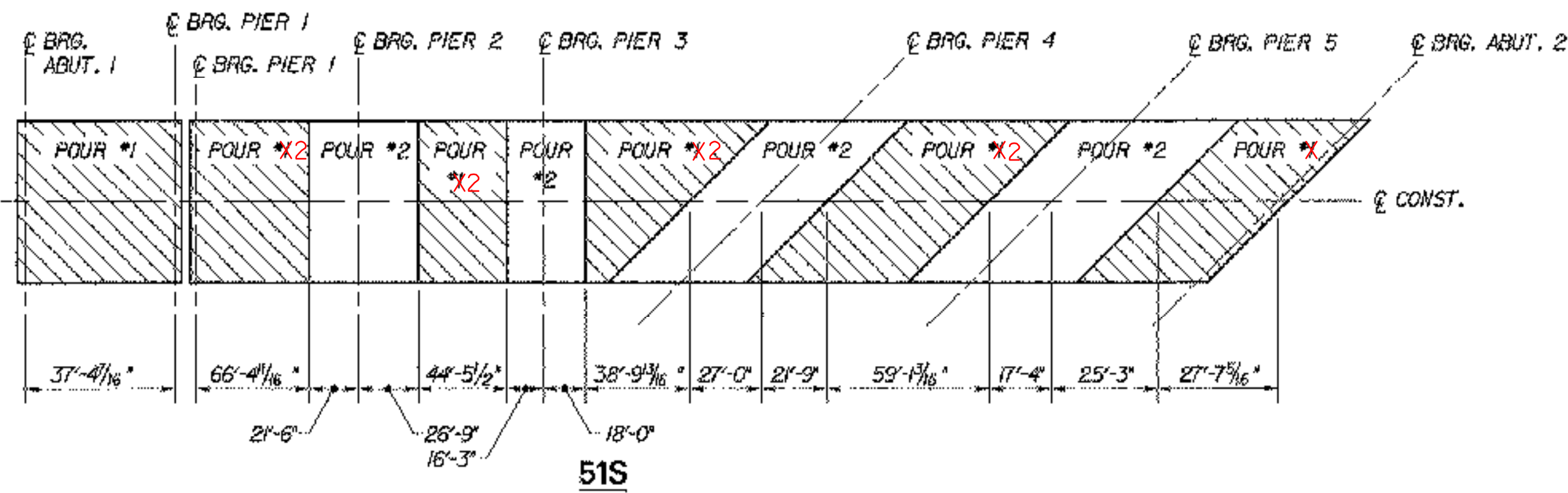
NOTE: LONGITUDINAL REINFORCEMENT LAYOUT IN LEFT SIDE OF DECK IS SIMILAR TO RIGHT SIDE. SEE DECK REINFORCEMENT PLANS FOR DETAILS.



TRANSVERSE SECTION - BR 51N&S
SCALE: 1/2" = 1'-0"



END OF DECK SLAB REINFORCEMENT DETAIL (EXP. END)
SCALE: 1/2" = 1'-0"

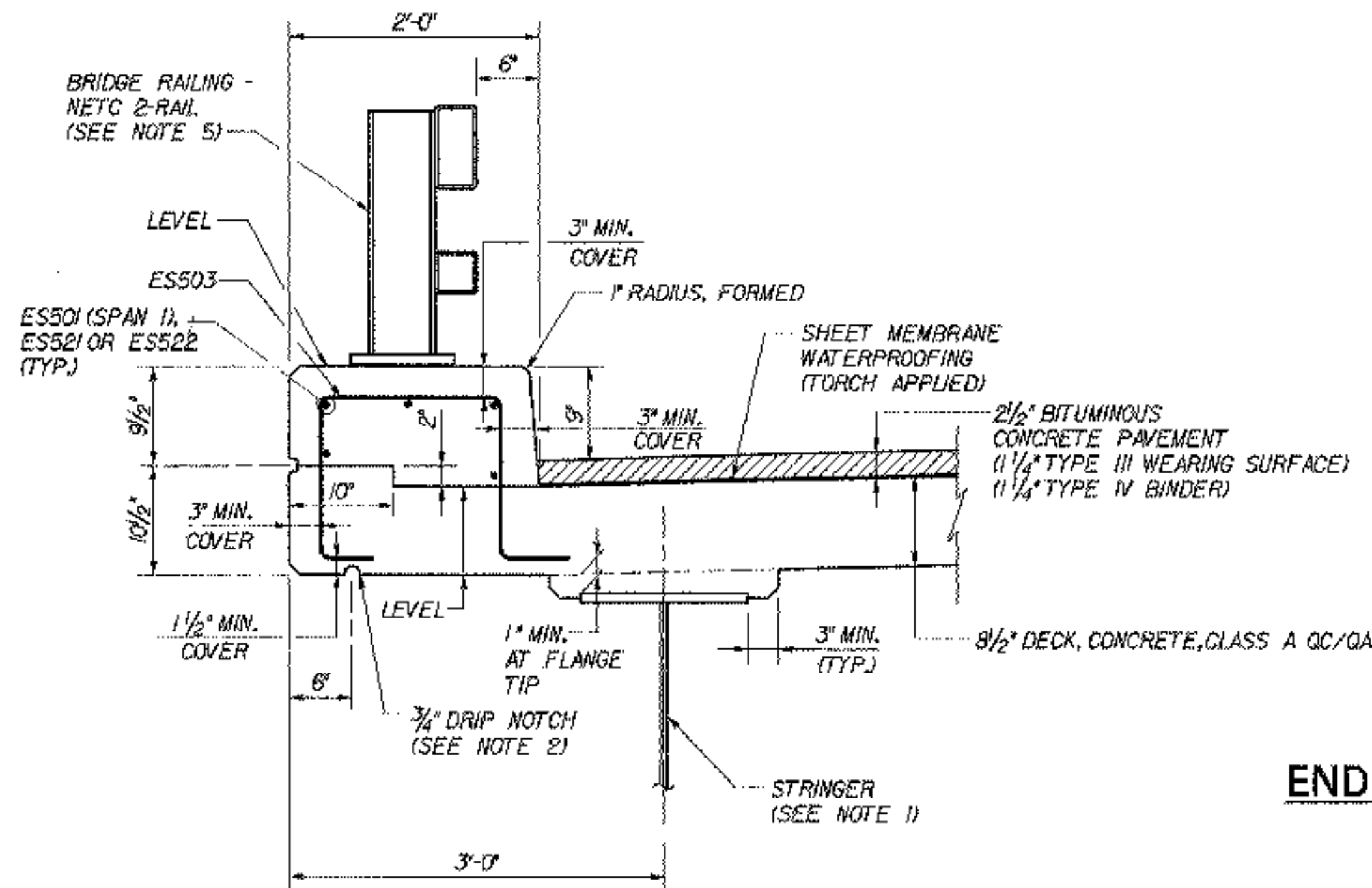


DECK POUR SEQUENCE
N.T.S.

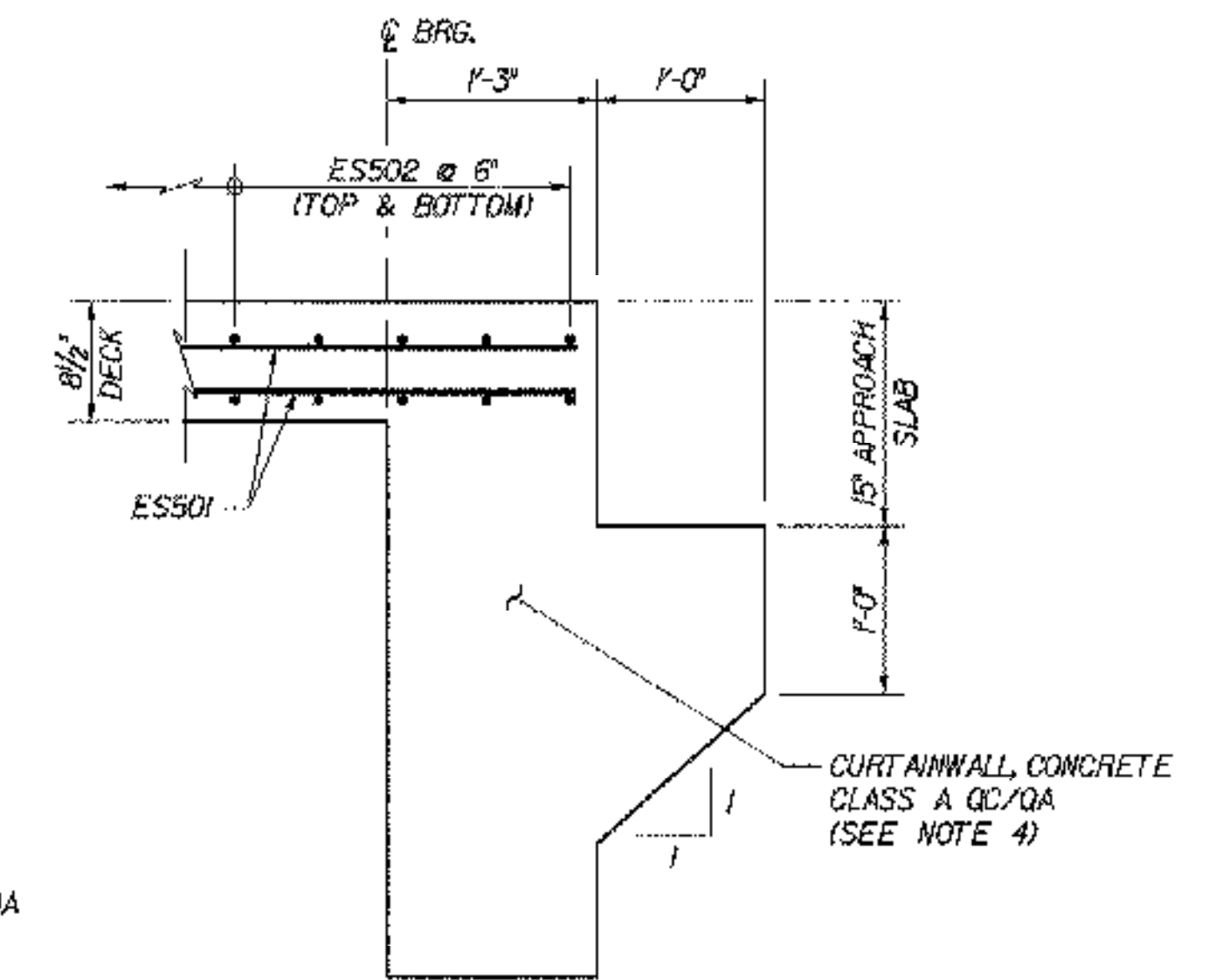
DECK SLAB PLACEMENT NOTES

A. EACH CONCRETE DECK POUR SHALL BE PLACED CONTINUOUSLY WITHIN ONE EIGHT HOUR WORKING DAY. THERE SHALL BE A MINIMUM DELAY PERIOD OF 96 HOURS AFTER COMPLETION OF EACH POUR BEFORE BEGINNING ANOTHER POUR. INDIVIDUAL POUR NUMBERS AS SHOWN MAY BE COMBINED INTO A SINGLE POUR IF APPROVED BY THE VAOT STRUCTURES ENGINEER.

B. THE DECK CONCRETE SHALL BE RETARDED SUFFICIENTLY TO REMAIN PLASTIC UNTIL EACH POUR IS COMPLETE. THE QUANTITY OF RETARDANT SHALL BE APPROVED BY THE CONCRETE ENGINEER PRIOR TO PLACEMENT. ANY DEVIATIONS FROM THIS PROCEDURE MUST BE APPROVED BY THE VAOT STRUCTURES ENGINEER IN WRITING BEFORE THE POUR BEGINS.



FASCIA DETAIL
SCALE: 1" = 1'-0"



END OF DECK SLAB REINFORCEMENT DETAIL (FIXED END)
SCALE: 1" = 1'-0"

NOTES:

1. PLATE GIRDER SHOWN, ROLLED BEAM SIMILAR. FOR STRINGER SIZES SEE STRINGER ELEVATIONS, BRIDGE SHEETS BR51-14, BR51-15, BR51-16 AND BR51-19.
2. END DRIP NOTCH 5 FEET BEFORE END OF SLAB AT "DOWNHILL" ABUTMENTS AT 45°.
3. FOR DETAILS OF TRANSVERSE REINFORCEMENT SEE DECK REINFORCEMENT PLANS, BRIDGE SHEETS BR51-8 AND BR51-9.
4. FOR CURTAINWALL DETAILS AND REINFORCEMENT LAYOUT, SEE TYPICAL CURTAINWALL DETAILS, BRIDGE SHEET C-42.
5. FOR DETAILS OF NETC BRIDGE RAIL AND APPROACH SECTION, SEE SHEETS C-47, C-48, AND C-49.

STATE OF VERMONT AGENCY OF TRANSPORTATION

Town Of	BOLTON	Bridge No.	51N&S
Highway No.	I-89	Log Sta.	
		Surv. Sta.	
I-89 OVER U.S. ROUTE 2 AND JOINER BROOK			
TRANSVERSE SECTION (51N&S)			
Designed By	P.W. SZUSTAK	Drawn By	R.A. BOYZENHART
Checked By	J.P. HALSTEAD	Date	10/99
		Bridge Design Supervisor	J.P. HALSTEAD
PROJECT	BOLTON	PROJECT NO.	IM-089-2(29)
		Date	10/99
		Bridge Sheet No.	BR51-7
		Sheet	106 of 307