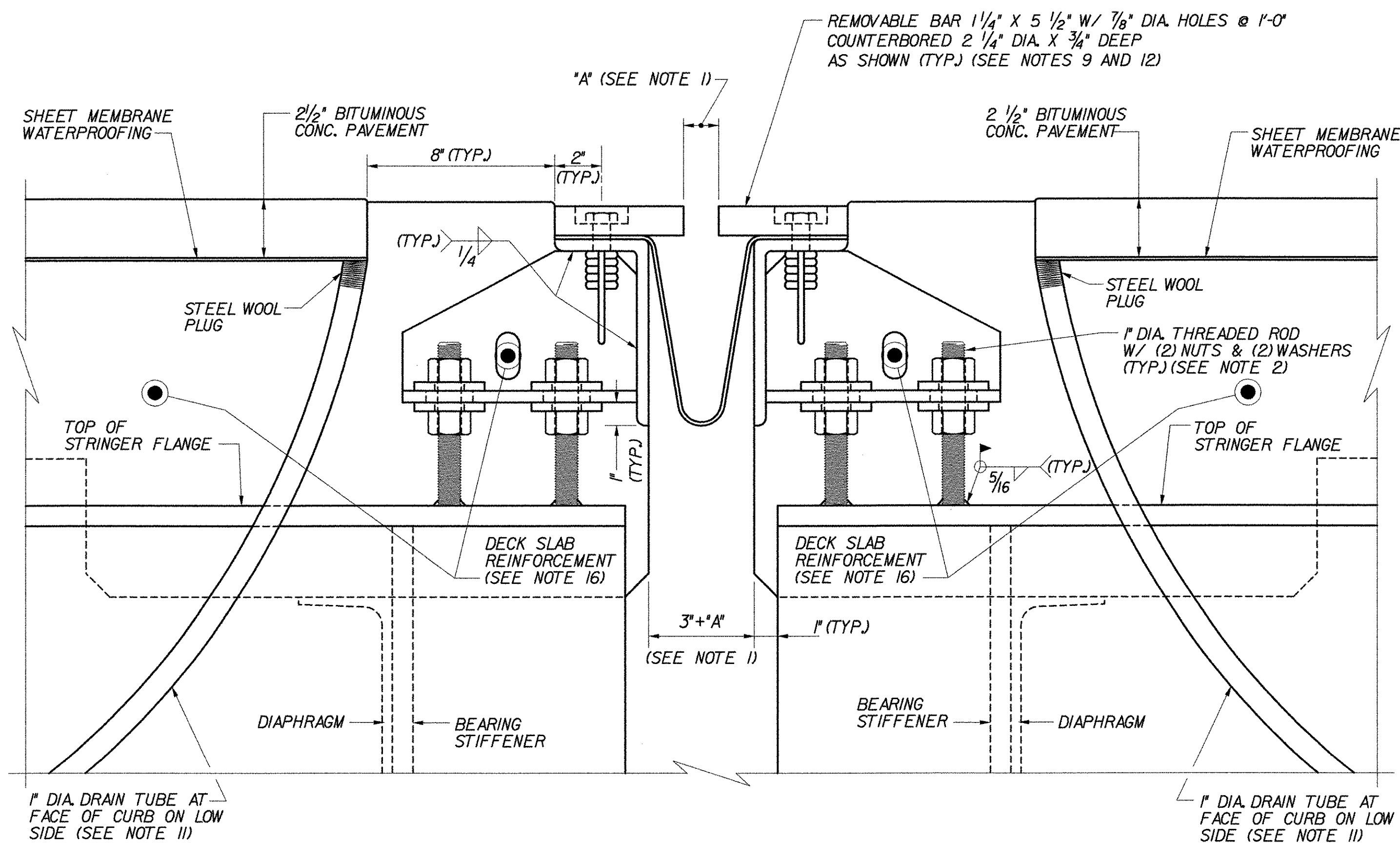


TYPICAL SECTION BETWEEN STRINGERS
(NORMAL TO \bar{C} BEARING)

SCALE: 3" = 1'-0"



TYPICAL SECTION AT STRINGERS
(NORMAL TO \bar{C} BEARING)

SCALE: 3" = 1'-0"

NOTES:

- FOR TABLE OF 'A' DIMENSION, SEE TYPE 'H' PIER JOINT DETAILS (2 OF 3), BRIDGE SHEET C-33.
- FOR BRACKET, PLATE, WASHER AND ANCHOR FERRULE DETAILS, SEE TYPE 'H' PIER JOINT DETAILS (2 OF 3), BRIDGE SHEET C-33.
- DETAILS ON THIS SHEET ARE FOR ITEM 516.10, 'BRIDGE EXPANSION JOINT'.
- PREFORMED FABRIC MATERIAL SHALL BE CONTINUOUS AND SHALL CONFORM TO SUBSECTION 707.07 OF THE SPECIFICATIONS.
- BUTYL RUBBER TAPE SHALL CONFORM TO AASHTO SPECIFICATION M-198, TYPE B.
- THE FINAL FINISH OF THE EXPANSION DEVICE SHALL BE COVERED DURING THE PLACING OF BRIDGE DECK CONCRETE.
- ALL STEEL COMPONENTS SHALL BE AASHTO M270 GRADE 36, UNLESS OTHERWISE SPECIFIED. THREADED ROD AND ASSOCIATED NUTS AND WASHERS SHALL CONFORM TO SUBSECTION 714.08 OF THE SPECIFICATIONS. ALL STEEL COMPONENTS AND HARDWARE SHALL BE GALVANIZED OR METALIZED PER SUBSECTION 506.15 OF THE SPECIFICATIONS, UNLESS OTHERWISE SPECIFIED.
- PAYMENT FOR ITEM 516.10, 'BRIDGE EXPANSION JOINT' SHALL INCLUDE THE FABRICATION AND ERECTION OF THE COMPLETE JOINT ASSEMBLY INCLUDING ALL STEEL PLATES, BRACKETS, ANGLES, WELDED STUDS OR RODS, PREFORMED FABRIC DRAIN TROUGH MATERIAL AND PLASTIC DRAIN TUBES, BUTYL RUBBER TAPE AND ANY OTHER MISCELLANEOUS MATERIAL NECESSARY TO INSTALL JOINT.
- THE 4 x 8 x 1/2 ANGLES SHALL BE FURNISHED AS ONE CONTINUOUS PIECE. THE 1 1/4" X 5 1/2" BARS EACH SIDE OF THE JOINT SHALL BE PROVIDED IN TWO EQUAL LENGTHS.
- COAT CONCRETE CONTACT SURFACES WITH EPOXY BONDING COMPOUND MEETING THE REQUIREMENTS OF SUBSECTION 719.02 OF THE SPECIFICATIONS. PAYMENT SHALL BE INCLUDED IN THE UNIT PRICE BID FOR ITEM 516.10, 'BRIDGE EXPANSION JOINT'.
- A 1" DIAMETER PLASTIC DRAIN TUBE SHALL BE INSTALLED AS SHOWN AT THE FACE OF CURB. THE UPPER END IS TO BE PLUGGED WITH STEEL WOOL AND THE LOWER END IS TO EXTEND BELOW THE BOTTOM OF THE ADJACENT STRINGER. THE DRAIN TUBES SHALL BE FASTENED TO THE STRINGERS USING A METHOD APPROVED BY THE ENGINEER.
- FILL COUNTERBORED HOLES WITH HOT POURED JOINT SEALER AFTER BOLT INSTALLATION. COSTS FOR THE WORK SHALL BE INCIDENTAL TO ITEM 516.10.
- FABRIC TROUGHS SHALL BE INSTALLED SO THAT MINIMUM SLOPE IS 1% FOR POSITIVE DRAINAGE.
- FABRIC TROUGH SHALL BE THOROUGHLY CLEANED AND FLUSHED AFTER PAVING OPERATION.
- EXPANSION JOINTS SHALL BE SHOP ASSEMBLED AND SHIPPED AS ONE UNIT.
- FOR DECK SLAB REINFORCEMENT DETAILS, SEE THE TRANSVERSE SECTION AND DECK REINFORCEMENT PLANS FOR EACH BRIDGE.

STATE OF VERMONT
AGENCY OF TRANSPORTATION

Town Of	BOLTON	Bridge No.	
Highway No.	I-89	Log Sta.	
		Surv. Sta.	

TYPE "H" PIER JOINT DETAILS (1 OF 3)

Designed By	P.W. SZUSTAK	Drawn By	R.A. BOTZENHART
Checked By	J.P. HALSTEAD	Date	10/99
		Bridge Design Supervisor	
PROJECT	BOLTON	PROJECT NO.	IM-089-2(29)
TVGA CAD Drawing No.	hjtpler2	Date	10/99
Bridge Sheet No.	C-32	Sheet	32 of 307