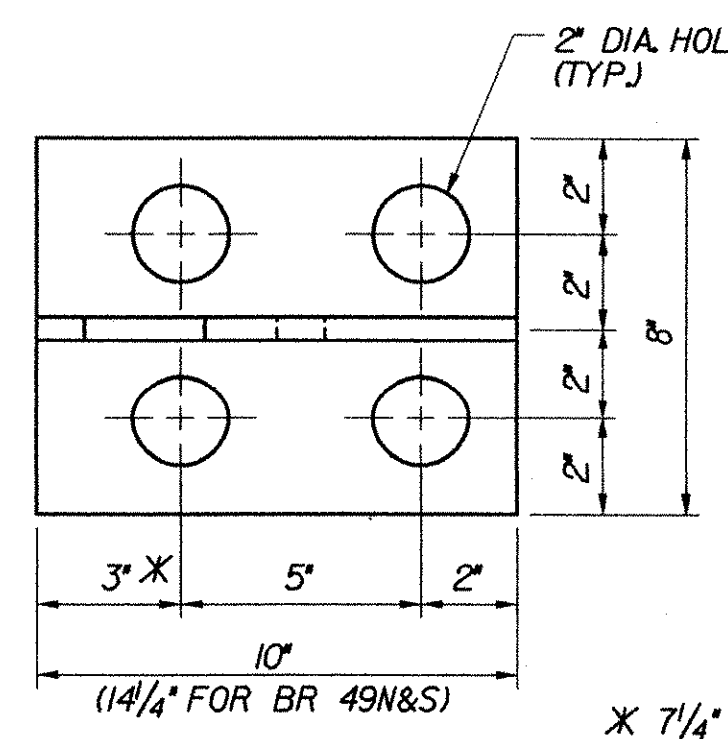


TYPICAL SECTION AT ARMORED BRUSH CURB
(NORMAL TO CL BEARING)
SCALE: 3" = 1'-0"



BRACKET PLAN
SCALE: 3" = 1'-0"

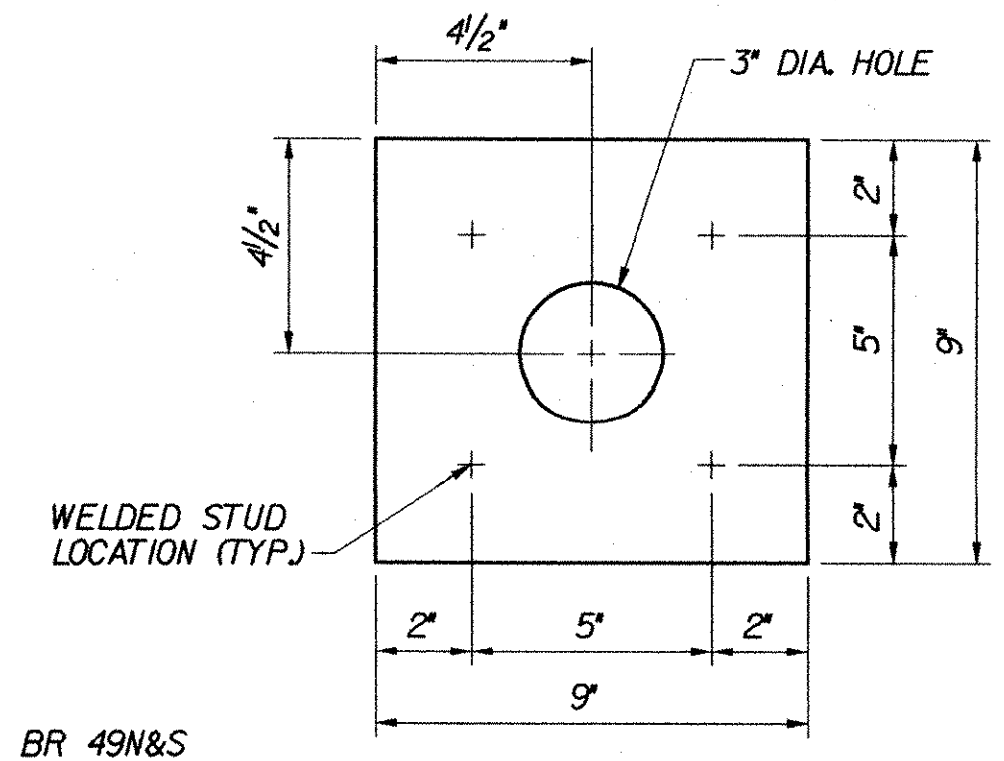
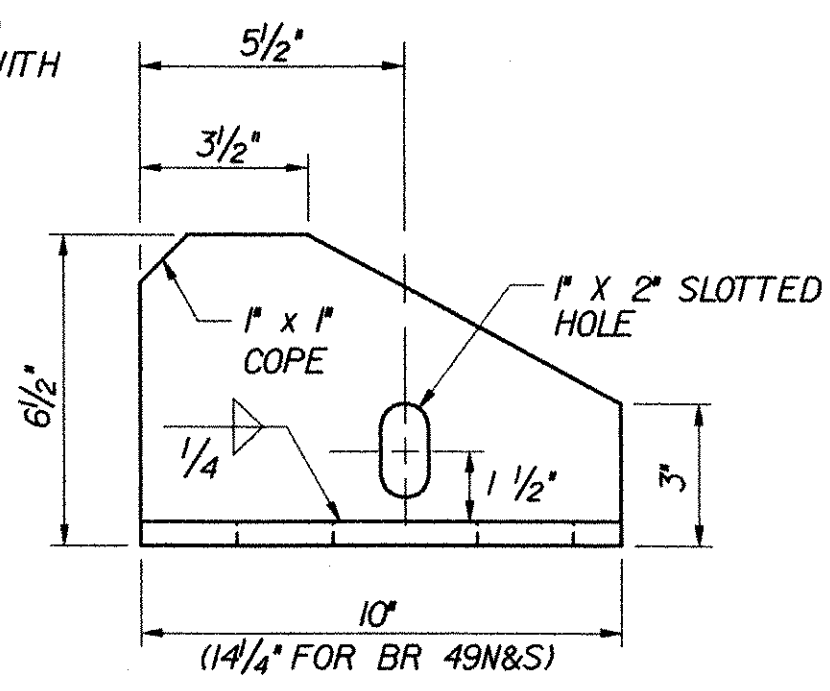
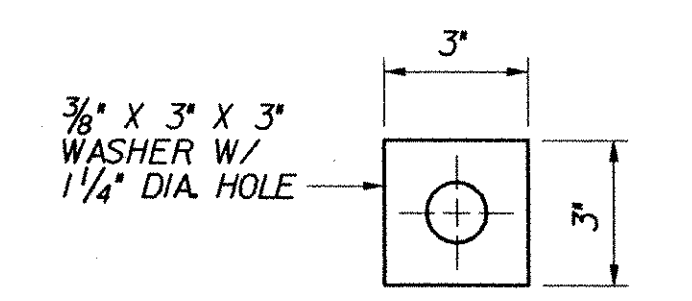


PLATE PLAN
(NOT GALVANIZED)
SCALE: 3" = 1'-0"

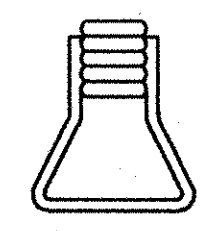
NOTE: ALL PLATES 1/2" THICK



BRACKET ELEVATION
SCALE: 3" = 1'-0"



WASHER FOR BRACKET
SCALE: 3" = 1'-0"

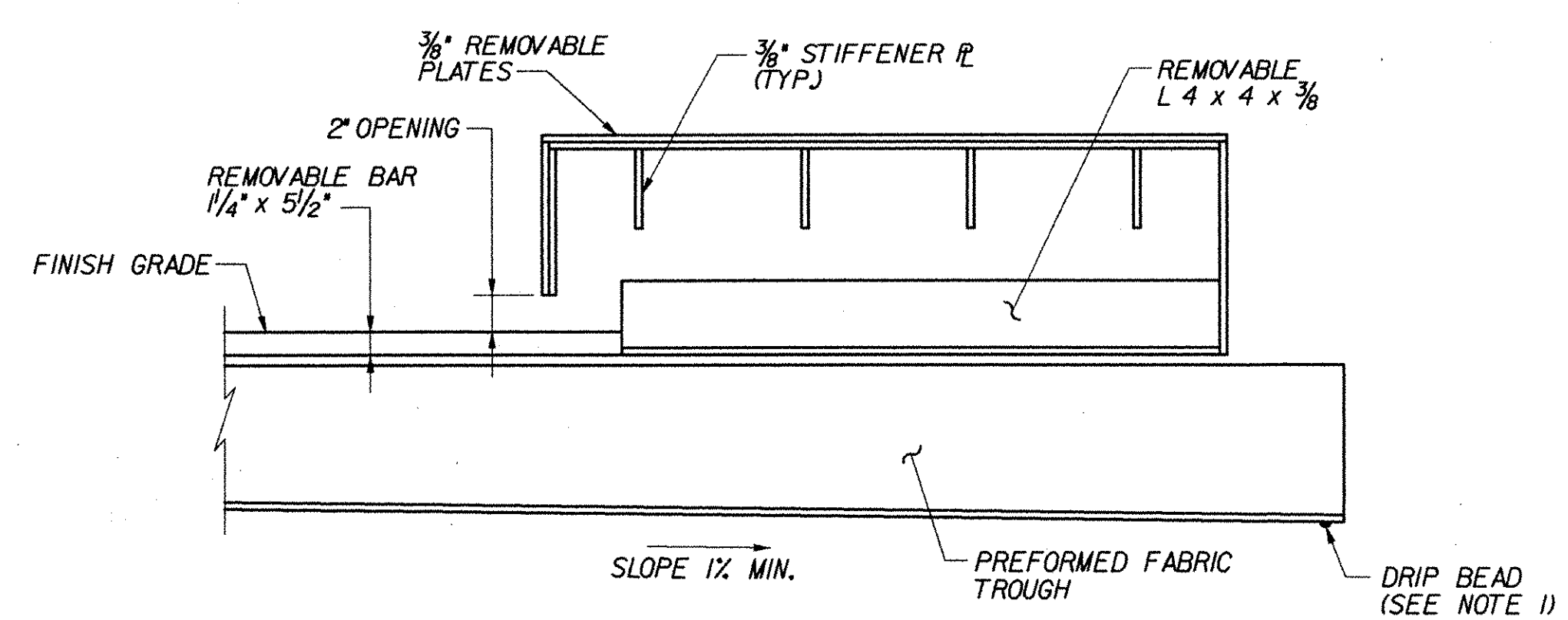


ANCHOR FERRULE DETAIL
SCALE: 3" = 1'-0"

BRIDGE	EXPANSION JOINT LOCATION	"X" @ 45° F		
		@ LEFT FASCIA	@ CL CONST.	@ RIGHT FASCIA
43N	ABUT. 2	8"	9 1/2"	9 1/2"
43S	ABUT. 1	8"	11"	11"
49N	ABUT. 2	8"	8"	8"
49S	ABUT. 2	8"	8"	8"
50N	ABUT. 2	8"	8"	8"
50S	ABUT. 1	8"	8"	8"
51N	ABUT. 2	8"	8"	8"
51S	ABUT. 2	8"	8"	8"

NOTES:

- A DRIP BEAD OF 1/4" x 7" STRIP OF PREFORMED MATERIAL SHALL BE CEMENTED TO THE BOTTOM OF THE FABRIC TROUGH USING AN ADHESIVE APPROVED BY THE MANUFACTURER. THE DRIP BEAD SHALL BE APPLIED 1' FROM THE DOWNSPOUT END OF THE TROUGH.
- LAP CURB PLATES IN DIRECTION OF TRAFFIC. FOR DIRECTION OF LAP AT EACH EXPANSION JOINT LOCATION, SEE TABLE ON TYPICAL TYPE "H" ABUTMENT JOINT PLAN, BRIDGE SHEET C-27.



LONGITUDINAL SECTION THROUGH ARMORED BRUSH CURB
N.T.S.

BRIDGE	LOCATION	"A" DIMENSION							
		0° F	15° F	30° F	45° F	60° F	75° F	90° F	105° F
43N	ABUT. 2	1 5/8"	1 1/2"	1 3/8"	1 3/16"	1 1/16"	0 15/16"	0 13/16"	0 5/8"
43S	ABUT. 1	1 13/16"	1 5/8"	1 1/2"	1 5/16"	1 3/16"	1"	0 13/16"	0 11/16"
49N	ABUT. 2	1 7/16"	1 5/16"	1 3/16"	1 1/16"	0 15/16"	0 13/16"	0 3/4"	0 5/8"
49S	ABUT. 2	1 7/16"	1 5/16"	1 3/16"	1 1/16"	0 15/16"	0 13/16"	0 3/4"	0 5/8"
50N	ABUT. 2	2 1/16"	1 7/8"	1 11/16"	1 1/2"	1 5/16"	1 1/16"	0 7/8"	0 11/16"
50S	ABUT. 1	1 15/16"	1 3/4"	1 9/16"	1 3/8"	1 3/16"	1"	0 7/8"	0 11/16"
51N	ABUT. 2	2 1/8"	1 15/16"	1 3/4"	1 1/2"	1 5/16"	1 1/8"	0 15/16"	0 11/16"
51S	ABUT. 2	2 1/8"	1 7/8"	1 11/16"	1 1/2"	1 5/16"	1 1/8"	0 7/8"	0 11/16"

STATE OF VERMONT
AGENCY OF TRANSPORTATION

Town Of	BOLTON	Bridge No.	
Highway No.	I-89	Log Sta.	
		Surv. Sta.	

TYPE "H" ABUTMENT JOINT DETAILS (2 OF 3)

Designed By	P.W. SZUSTAK	Drawn By	R.A. BOTZENHART
Checked By	J.P. HALSTEAD	Date	10/99
		Bridge Design Supervisor	J.P. HALSTEAD Date 10/99

PROJECT	BOLTON	PROJECT NO.	IM-089-2(29)
---------	--------	-------------	--------------

TVGA CAD Drawing No.	h-jointd2	Date	10/99
Bridge Sheet No.	C-29	Sheet	29 of 307

