

TYPICAL TYPE "H" EXPANSION ABUTMENT JOINT PLAN

(BR 51S SHOWN - BR 51N SIMILAR)

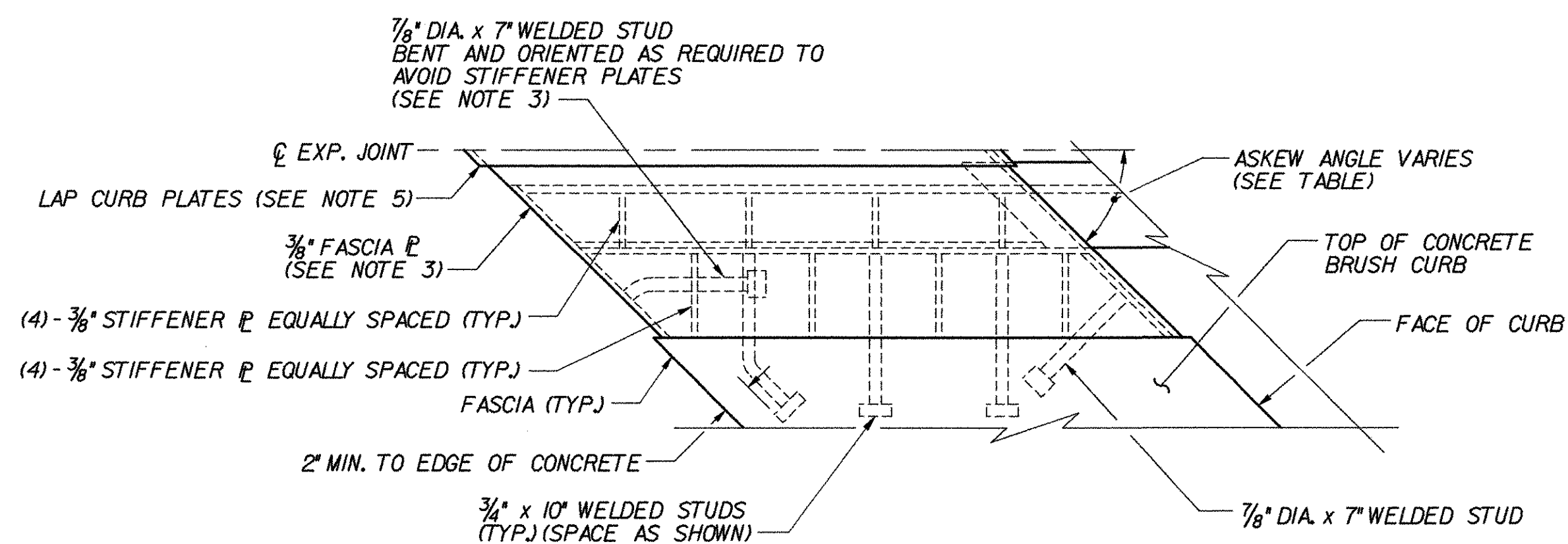
SCALE: 1/2" = 1'-0"

* NOTE: STUDS NOT SHOWN IN BRUSH CURB FOR CLARITY

NOTES:

1. TOP AND FACE OF BRUSH CURB ARE ATTACHED BY BOLTS AND ARE REMOVABLE TO ALLOW CLEANING AND/OR REPLACEMENT OF FABRIC TROUGH.
2. FOR TYPICAL SECTIONS OF EXPANSION JOINT AND ARMORED BRUSH CURB, SEE TYPE "H" ABUTMENT JOINT DETAILS, BRIDGE SHEETS C-28 AND C-29.
3. FOR VIEW OF FASCIA PLATES, AND LOCATION OF WELDED STUDS ON FASCIA PLATES, SEE TYPE "H" ABUTMENT JOINT DETAILS (3 OF 3), BRIDGE SHEET C-30.
4. BARS IN ROADWAY ARE REMOVABLE TO ALLOW CLEANING AND/OR REPLACEMENT OF FABRIC TROUGH.
5. LAP CURB PLATES IN DIRECTION OF TRAFFIC. SEE TABLE FOR DIRECTION OF LAP AT EACH EXPANSION JOINT LOCATION.
6. WHERE HOPPER IS NOT REQUIRED, PREFORMED FABRIC TROUGH SHALL BE TERMINATED 2' INSIDE THE FASCIA.

BRIDGE	EXPANSION JOINT LOCATION	ASKEW ANGLE AT EXPANSION JOINT	DIRECTION OF SKEW	HOPPER LOCATION	DIRECTION OF CURB PLATE LAP
51N	ABUT. 2	43° 40' 33"	AHEAD LT.	LT.	REVERSE AS SHOWN
51S	ABUT. 2	43° 08' 46"	AHEAD LT.	LT.	AS SHOWN



DETAIL "A"

(ONE QUADRANT OF ARMORED BRUSH CURB SHOWN - ALL OTHER QUADRANTS SIMILAR)

SCALE: 1/2" = 1'-0"

**STATE OF VERMONT
AGENCY OF TRANSPORTATION**

Town Of	BOLTON	Bridge No.	
Highway No.	I-89	Log Sta.	
		Surv. Sta.	

TYPICAL TYPE "H" ABUTMENT JOINT PLAN

Designed By	P.W. SZUSTAK	Drawn By	R.A. BOTZENHART
Checked By	J.P. HALSTEAD	Date	06/04
		Bridge Design Supervisor	J.P. HALSTEAD Date 06/04

PROJECT	BOLTON	PROJECT NO.	IM-089-2(29)
---------	--------	-------------	--------------

TVGA CAD Drawing No.	h-jointp	Date	06/04
Bridge Sheet No.	C-27	Sheet	27 of 307