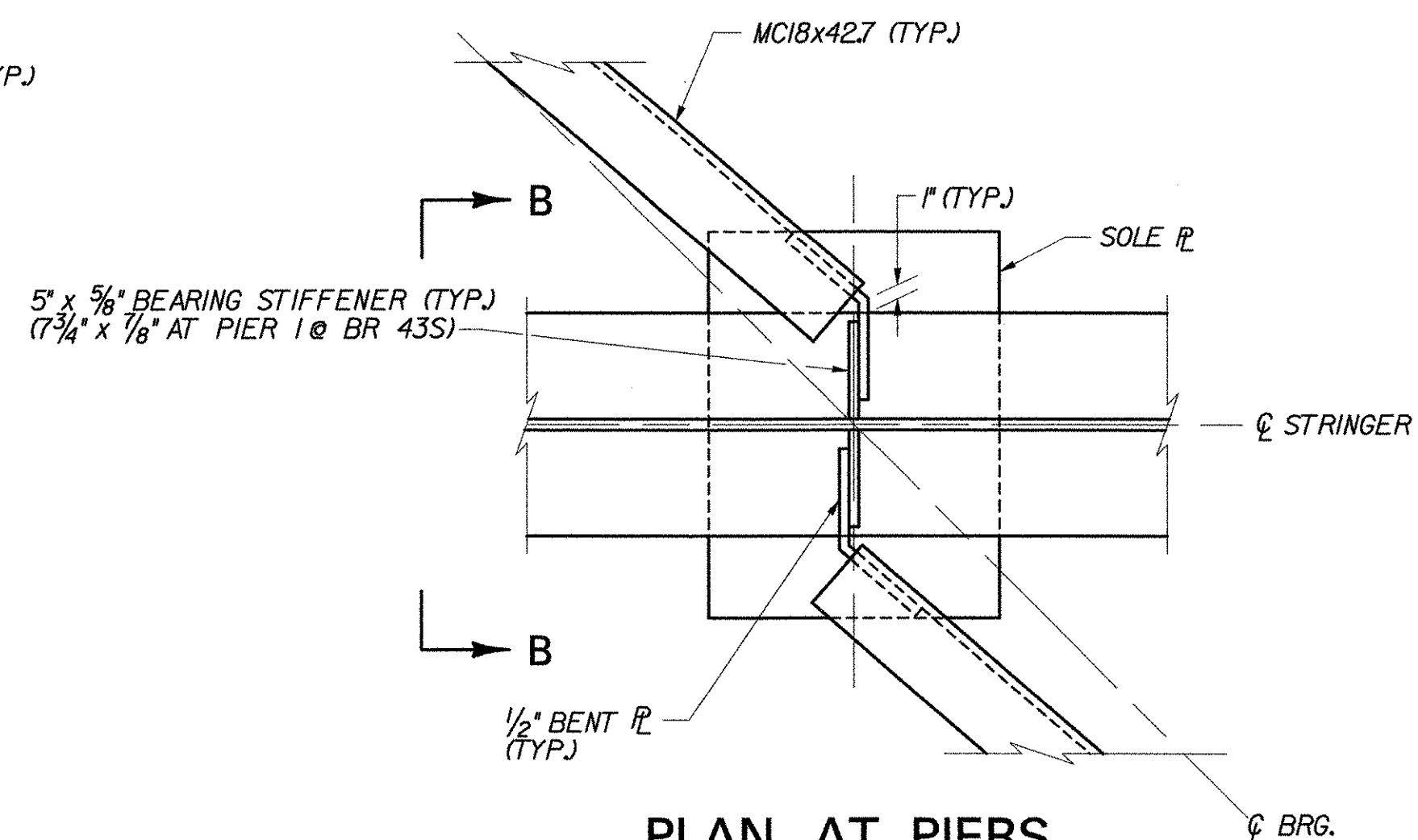
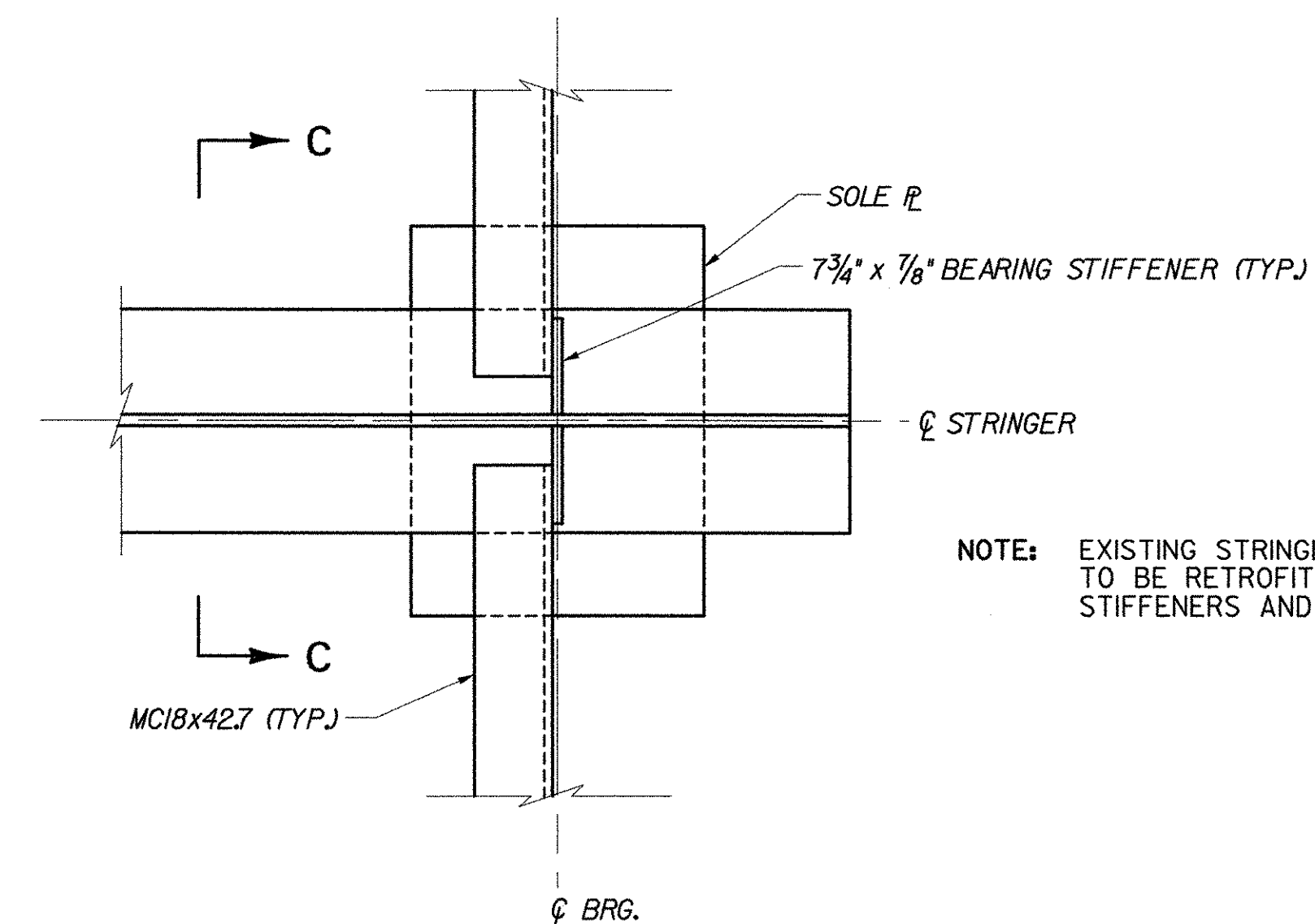


**PLAN AT EXPANSION ABUTMENTS**  
(BR 43N&S)  
N.T.S.

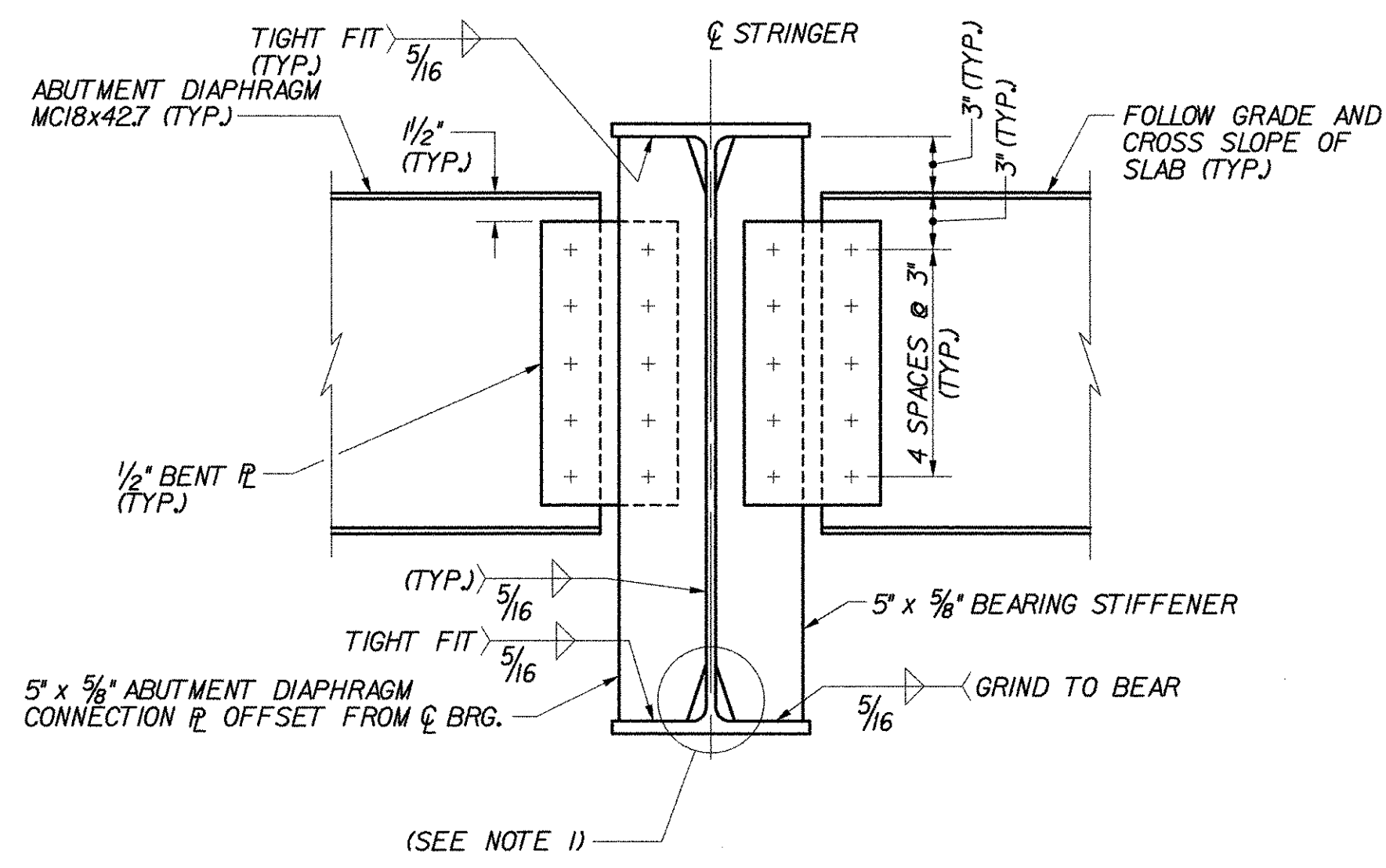


**PLAN AT PIERS**  
(BR 43N&S)  
N.T.S.

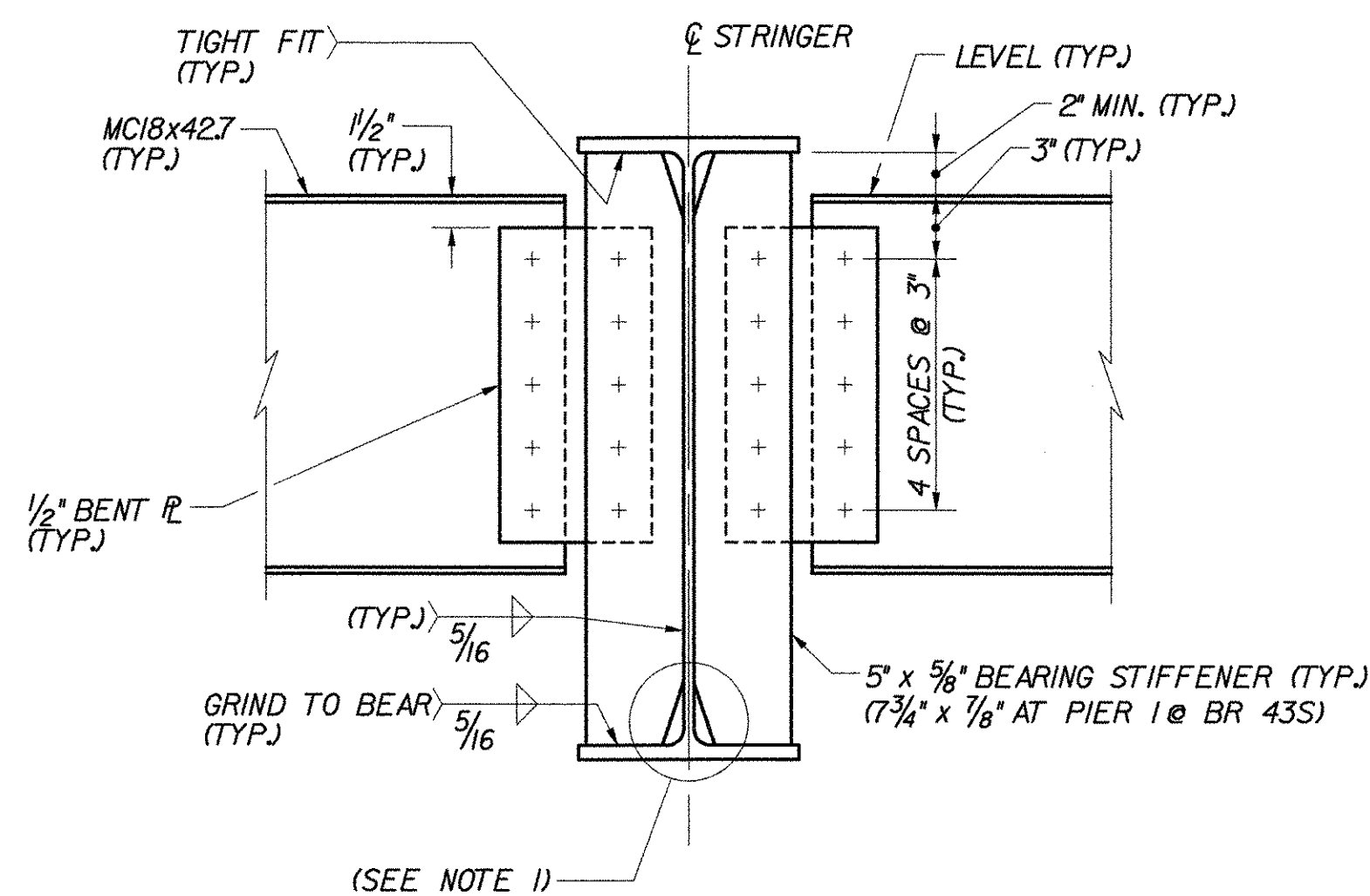


**PLAN AT ABUTMENTS AND PIERS**  
(PIER 1 AT BR 51N&S)  
(ABUTMENT 2 AT BR 49N&S)  
N.T.S.

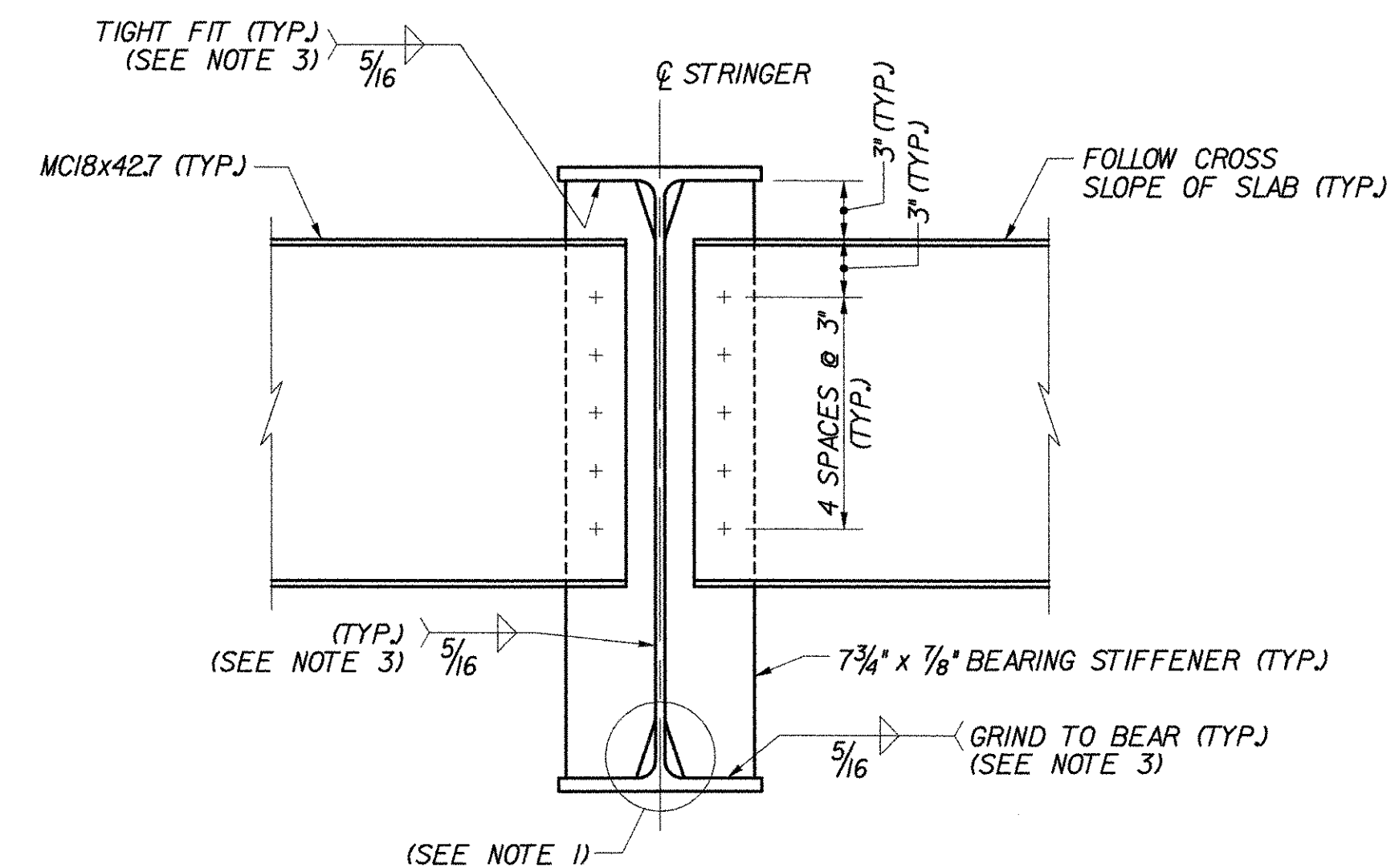
NOTE: EXISTING STRINGERS AT BR 49N&S ABUT. 2 TO BE RETROFITTED WITH NEW BRG. STIFFENERS AND DIAPHRAGMS.



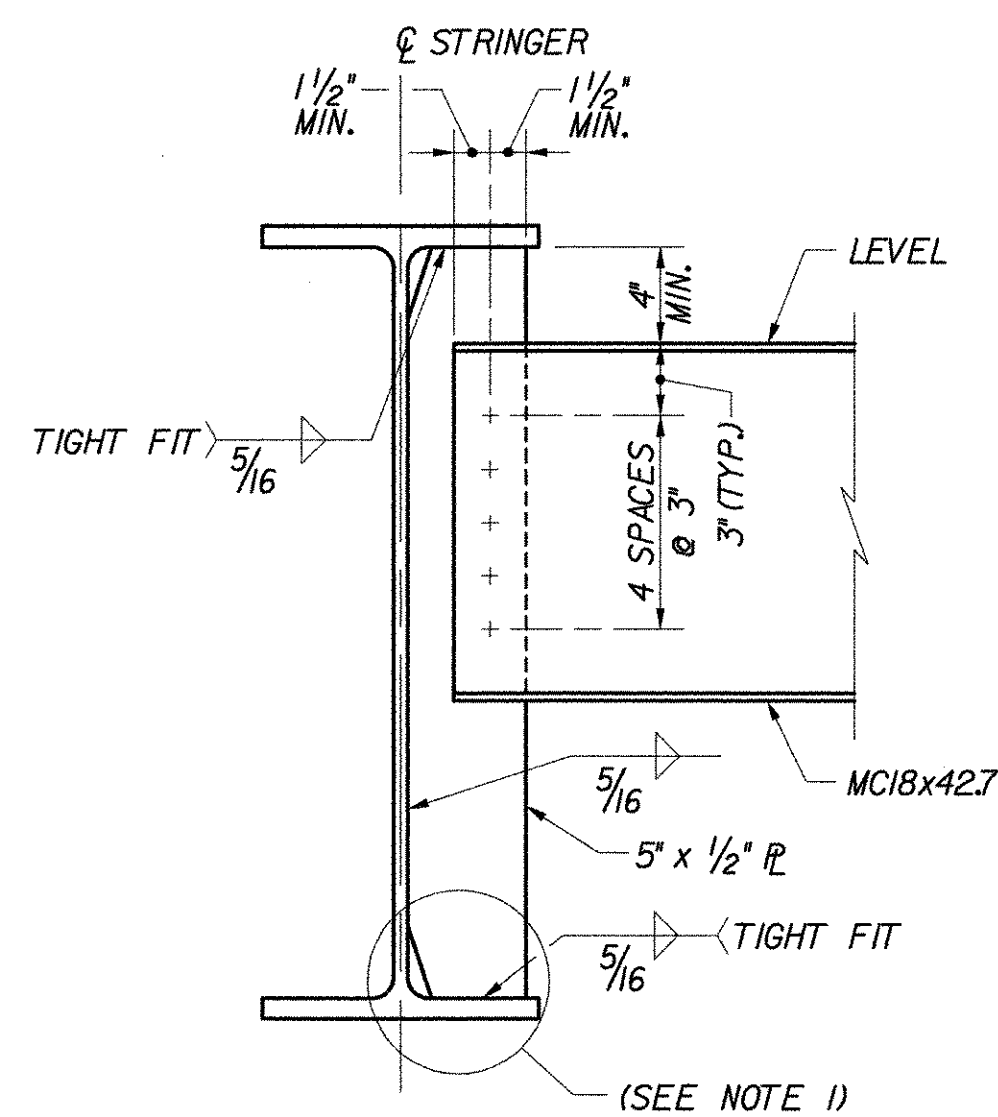
**ELEVATION A-A**  
N.T.S.



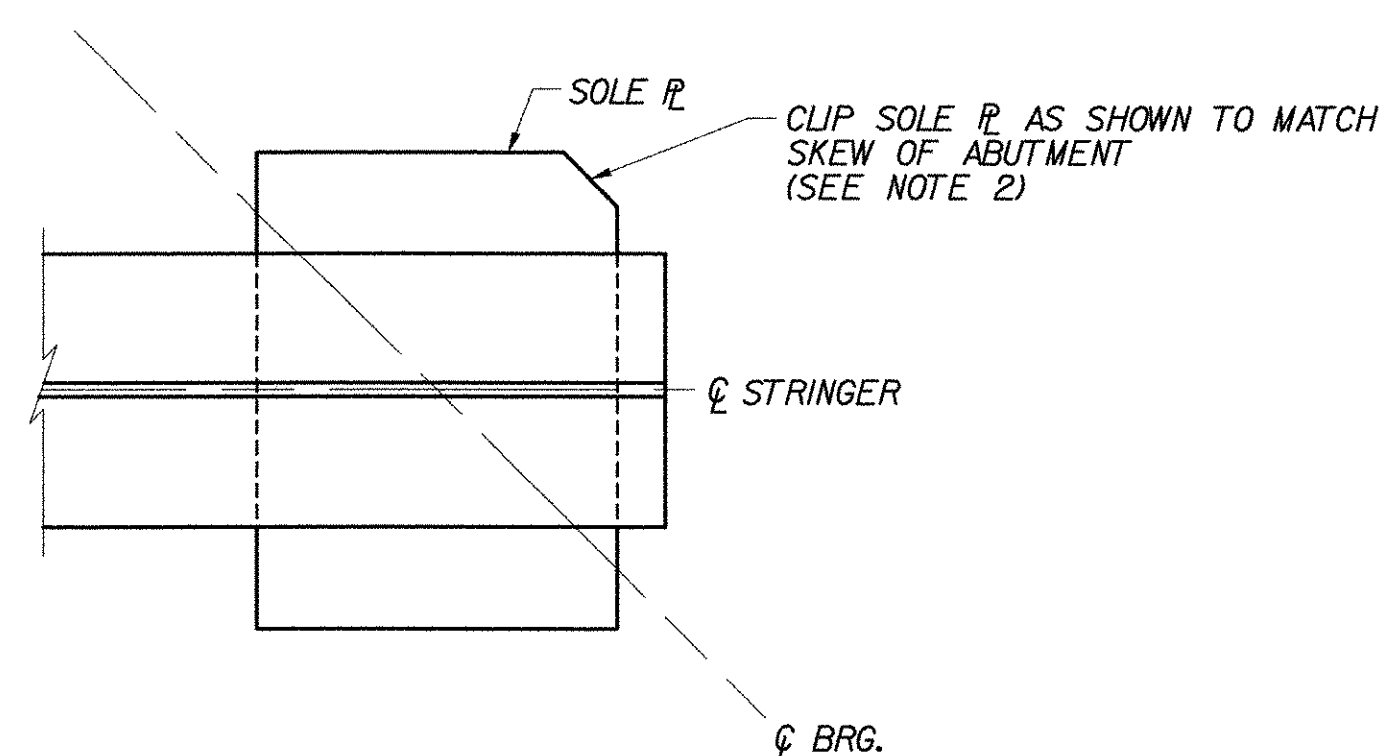
**ELEVATION B-B**  
N.T.S.



**ELEVATION C-C**  
N.T.S.



**TYPICAL INTERMEDIATE DIAPHRAGM CONNECTION**  
N.T.S.



**PLAN AT FIXED ABUTMENTS**  
(BR 43N&S SHOWN, ABUTMENT 1 AT BR 51N&S SIMILAR)  
N.T.S.

**NOTES:**

- FOR TYPICAL WELD TERMINATION AND COPING DETAIL, SEE TYPICAL PLATE GIRDER DETAILS (2 OF 2), BRIDGE SHEET C-18.
- FOR DETAILS AND DIMENSIONS OF SOLE PLATE CLIP, SEE BEARING DETAILS ON BRIDGE SHEETS C-2 THROUGH C-25.
- FIELD WELD AT BR 49N&S.
- FOR DRIP PLATE DETAIL, SEE TYPICAL BRIDGE DETAILS, BRIDGE SHEET C-46.

**STATE OF VERMONT AGENCY OF TRANSPORTATION**

Town Of	BOLTON	Bridge No.	
Highway No.	I-89	Log Sta.	
		Surv. Sta.	

**TYPICAL ROLLED BEAM DETAILS**

Designed By	P.W. SZUSTAK	Drawn By	R.A. BOTZENHART
Checked By	Date	Bridge Design Supervisor	Date
	J.P. HALSTEAD 10/99	J.P. HALSTEAD	10/99

PROJECT	BOLTON	PROJECT NO.	IM-089-2(29)
---------	--------	-------------	--------------

TVGA CAD Drawing No.	rollbeam	Date	10/99
Bridge Sheet No.	C-16	Sheet	16 of 307