

GPS CONTROL POINTS

**TRAV. 1**

**CGS AZIMUTH MARK STAMPED  
" BOLTON 1968 "**

N = 80783.65800  
E = 46756.16200  
Z = 0.0

**STATION DESCRIPTION**

TO REACH FROM THE I-89 SOUTHBOUND BRIDGE OVER U.S. ROUTE 2 IN BOLTON GO SOUTHEAST ALONG I-89 SOUTHBOUND FOR 1.1 MI (1.8 KM) TO THE MARK ON THE LEFT IN THE MEDIAN. TO REACH FROM THE INTERSECTION OF I-89 NORTHBOUND AND THE CHITTENDEN/WASHINGTON COUNTY LINE GO NORTHWEST ALONG I-89 NORTHBOUND FOR 1.8 MI (2.9 KM) TO THE SITE.

THE MARK IS SET IN THE TOP OF THE SOUTHEAST END OF A LONG EXPOSED LEDGE IN THE MEDIAN.

IT IS 5.5 M (18.0 FT) SOUTHWEST OF AND ABOUT 2 M (6.6 FT) HIGHER THAN THE SOUTHWEST EDGE OF PAVEMENT OF I-89 NORTHBOUND, 6.9 M (22.6 FT) NORTHEAST OF THE NORTHEAST EDGE OF I-89 SOUTHBOUND, 2.2 (7.2 FT) NORTHWEST OF THE SOUTHEAST END OF THE LEDGE, AND 2.8 M (9.2 FT) NORTHWEST OF A FIBERGLASS WITNESS POST.

**TRAV. 2**

**NGS SURVEY DISK STAMPED  
" GM 18 1979 "**

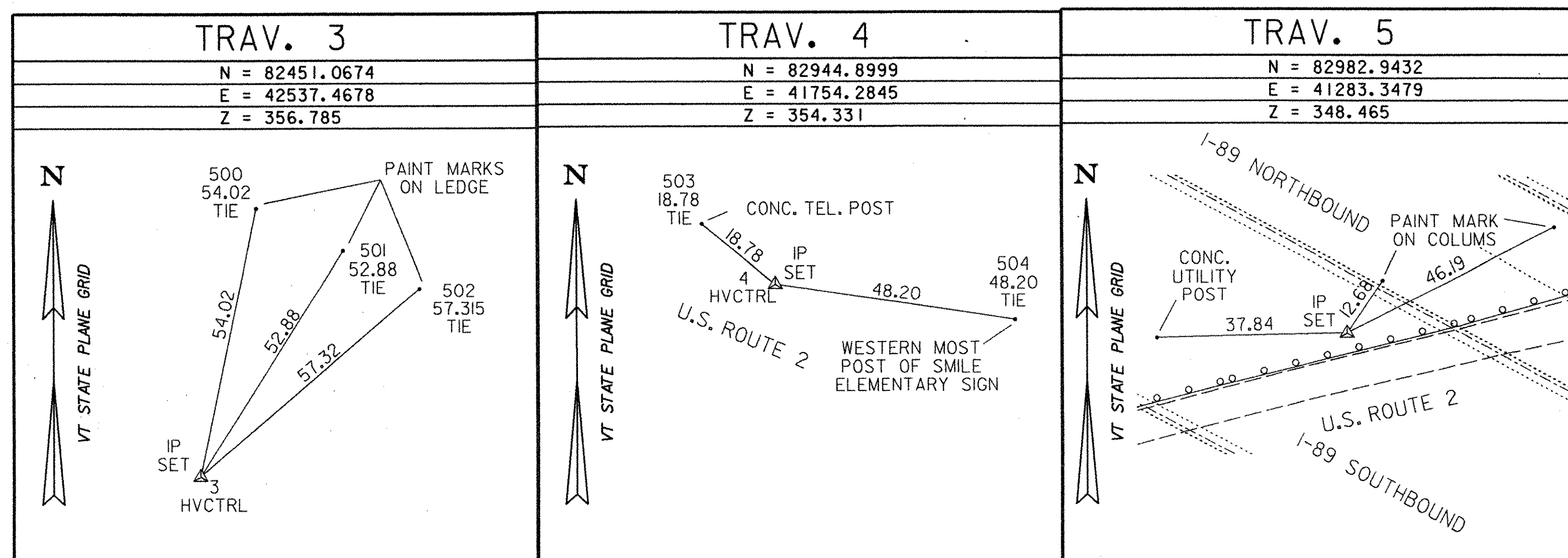
N = 82308.36960  
E = 43075.92900  
Z = 354.120

**STATION DESCRIPTION**

0.8 MIEAST FROM BOLTON. TO REACH FROM THE INTERSECTION OF ROUTE I-89 AND THE CHITTENDEN/WASHINGTON COUNTY LINE (BOLTON/WATERBURY TOWN LINE) GO WNW ALONG ROUTE I-89 NORTHBOUND FOR 2.45 MI, 0.35 MI ESE ALONG U.S. ROUTE 2 FROM ITS INTERSECTION WITH THE BOLTON VALLEY ROAD (CL2-3), 34 FT NNE OF THE CENTERLINE OF U.S. ROUTE 2, 19.5 FEET WNW OF POLE NUMBER 187, AT THE ESE END OF A LEDGE CUT.

• DESCRIPTIONS PROVIDED BY VTGS

TRAVERSE TIES



ALIGNMENT TIES

N =	N =	N =	N =	N =
E =	E =	E =	E =	E =

**NOTES:**

I. VAOT TO PROVIDE ALIGNMENT TIES DURING CONSTRUCTION.

**STATE OF VERMONT  
AGENCY OF TRANSPORTATION**

Town Of <b>BOLTON</b>	Bridge No. <b>51N&amp;S</b>
Highway No. <b>I-89</b>	Log Sta. Surv. Sta.

**I-89 OVER US ROUTE 2 AND JOINER BROOK**

**CONTROL POINT TIES (51N&S)**

Designed By V.A.O.T.	Drawn By V.A.O.T.
Checked By V.A.O.T.	Bridge Design Supervisor J.P. HALSTEAD
Date 10/99	Date 10/99
PROJECT <b>BOLTON</b>	PROJECT NO. <b>IM-089-2(29)</b>
TVGA CAD Drawing No. 51ties	Date 10/99
Bridge Sheet No. <b>C-13</b>	Sheet 13 of 307

DATUM  
VERTICAL NAVD 88  
HORIZONTAL NAD 83/92