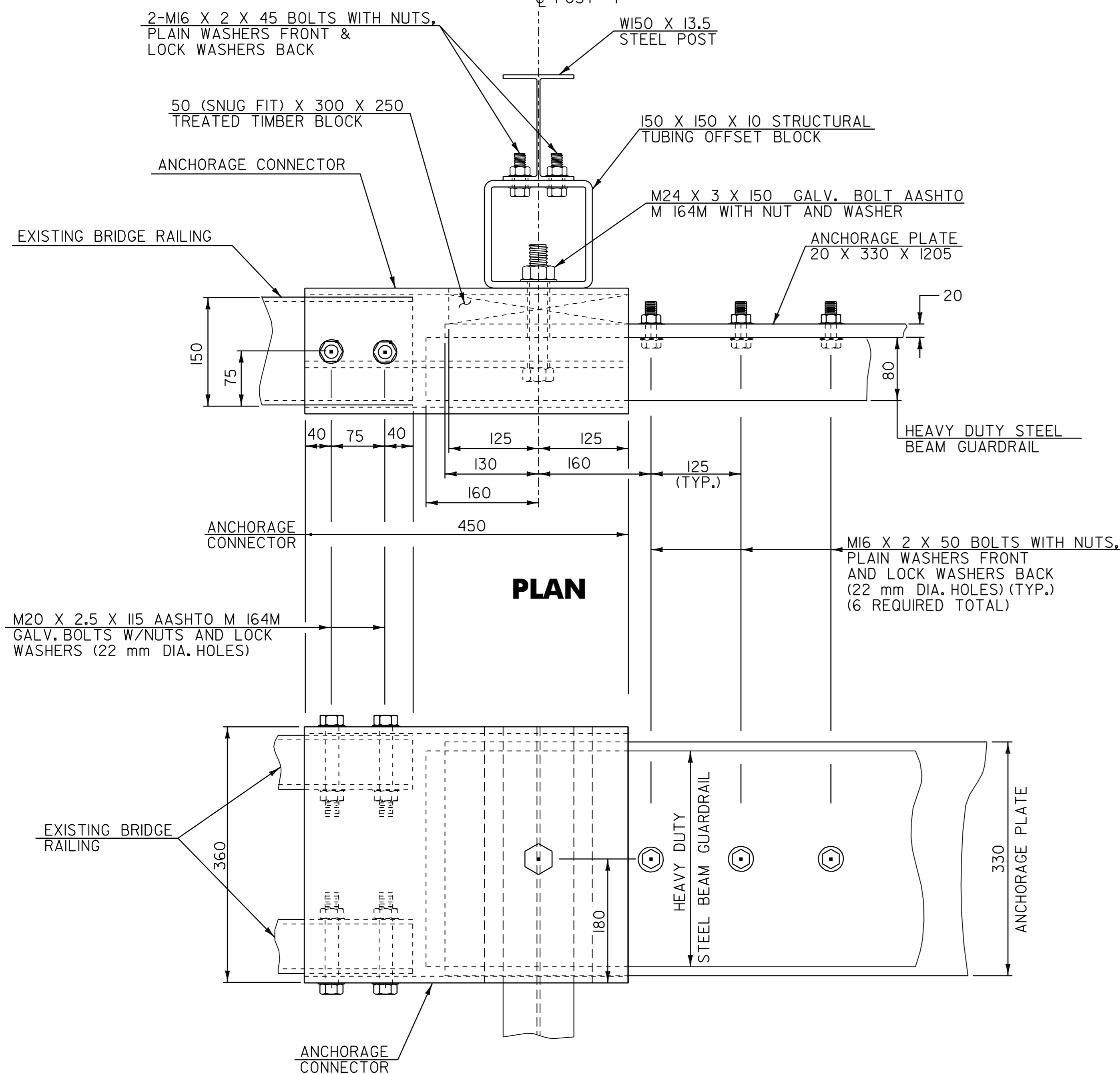


**NOTES**

1. REFER TO STANDARD G-IM FOR ADDITIONAL RAIL DETAILS.
2. ALL POSTS FOR HEAVY DUTY STEEL BEAM GUARDRAIL SHALL BE STEEL IN ACCORDANCE WITH SECTION 728 "GUARDRAIL, GUIDE POSTS AND BARRIERS" UNLESS OTHERWISE SPECIFIED IN THE CONTRACT.
3. APPROACH RAIL SPLICES SHALL LAP IN DIRECTION OF TRAFFIC FLOW.
4. ANCHORAGE CONNECTOR AND ANCHORAGE PLATE SHALL BE AASHTO M 270/M 270M, GRADE 250 GALVANIZED TO AASHTO M III/M IIIIM AFTER FABRICATION.
5. ALL BOLTS, NUTS AND WASHERS SHALL BE AASHTO M 164/M 164M GALVANIZED TO AASHTO M 232/M 232M AFTER FABRICATION.
6. STRUCTURAL TUBING OFFSET BLOCK SHALL BE ASTM A 500, GRADE B, OR ASTM A 501 GALVANIZED TO AASHTO M III/M IIIIM AFTER FABRICATION.
7. APPROACH RAILING SHALL BE HEAVY DUTY STEEL BEAM FOR EITHER TYPE OF GUARDRAIL APPROACH SECTION.
8. ALLOWABLE DIMENSIONAL TOLERANCE FOR BENT SECTIONS IS  $\pm 1.6$  mm.
9. THE UNIT PRICES BID FOR EITHER TYPE OF GUARDRAIL APPROACH SECTION SHALL INCLUDE ANCHORAGE CONNECTOR, ANCHORAGE PLATE, HEAVY DUTY STEEL BEAM GUARDRAIL, POSTS, OFFSET BLOCKS, BLOCKING, BOLTS, AND ALL NECESSARY HARDWARE.

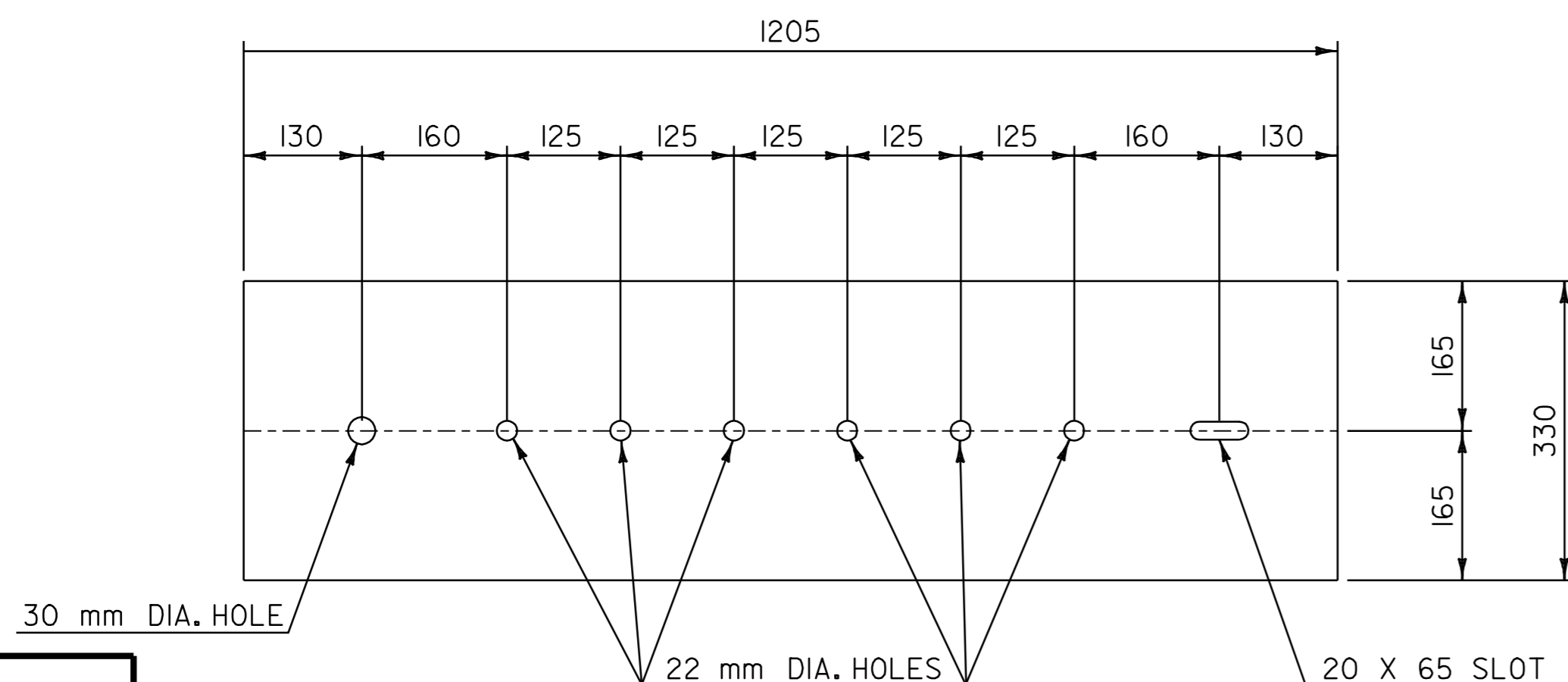


**PLAN**

**ELEVATION**

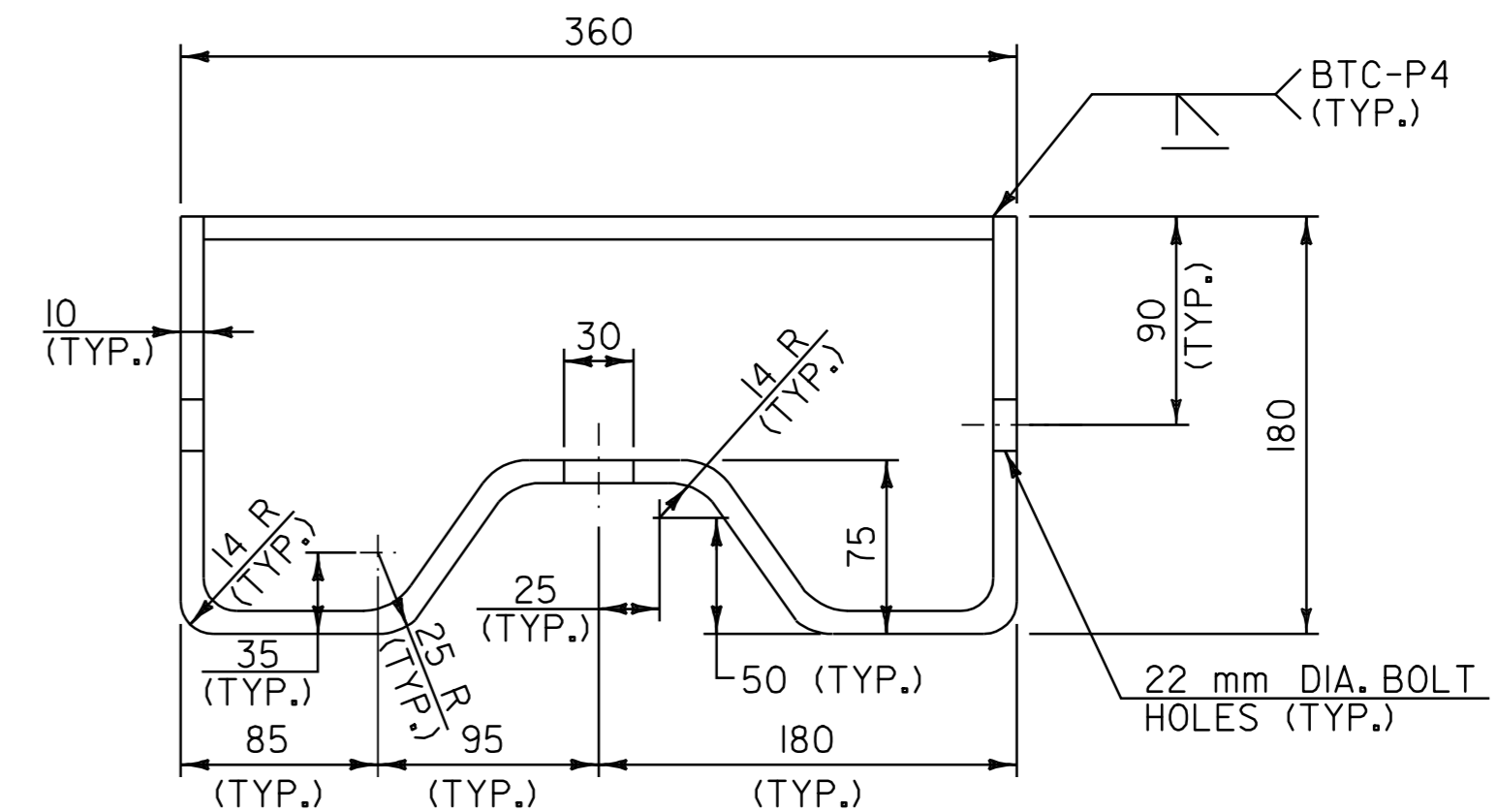
**CONNECTION/TRANSITION DETAILS AT POST NO. 1**

NOT TO SCALE



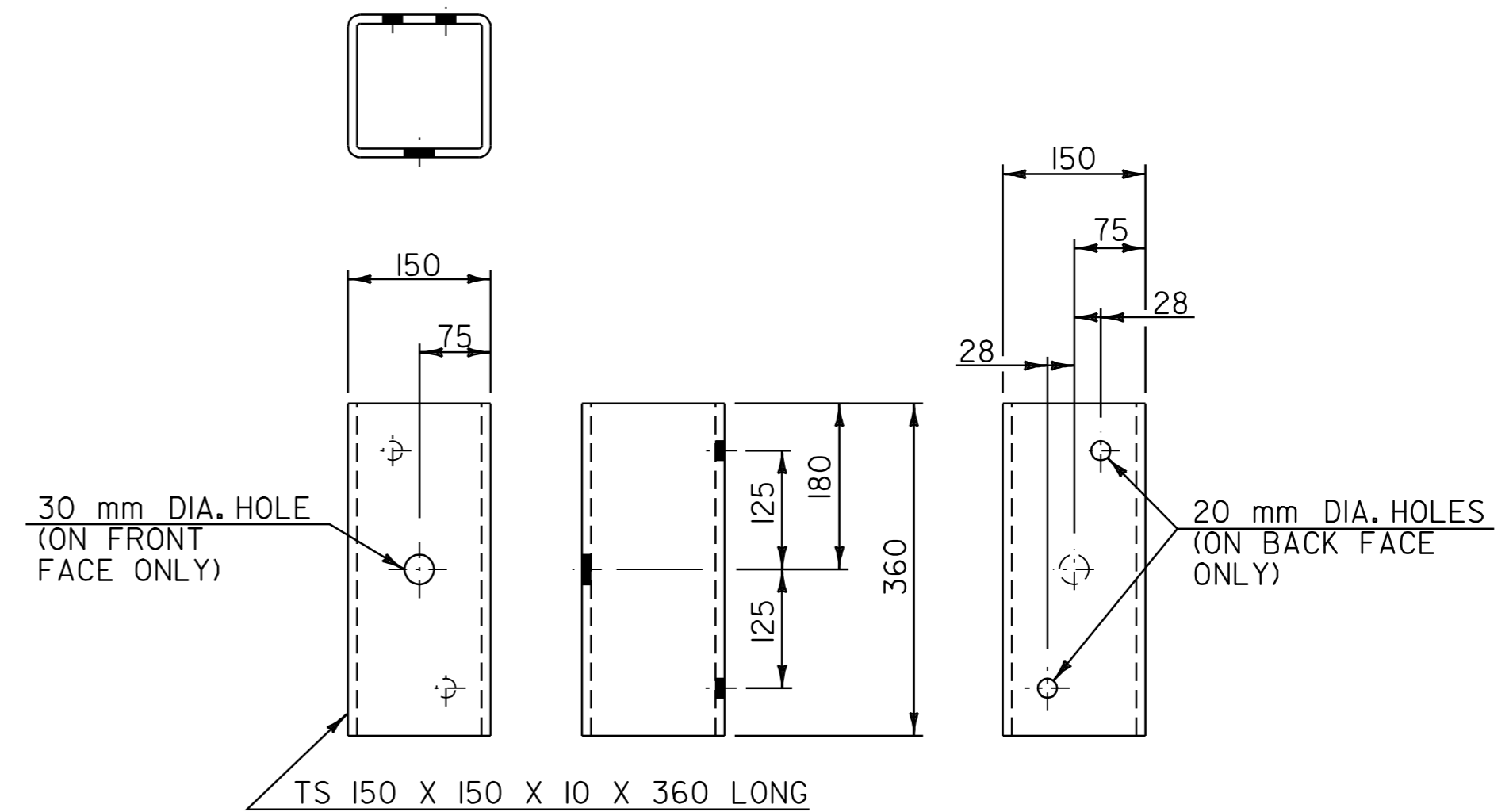
**ANCHORAGE PLATE DETAIL**

NOT TO SCALE



**ANCHORAGE CONNECTOR DETAIL**

(SEE NOTE 7)  
NOT TO SCALE



**STRUCTURAL TUBING OFFSET BLOCK DETAILS**

(OCCURS AT POST NO. 1 WHEN USING APPROACH RAIL UTILIZING STEEL POSTS)  
NOT TO SCALE

NOTE:  
ALL DIMENSIONS IN MILLIMETERS EXCEPT WHERE OTHERWISE NOTED.

**BRIDGE  
APPROACH  
SECTION  
DETAIL  
SHEET 2**

PROJECT NAME: BRATTLEBORO-ROCKINGHAM  
PROJECT NUMBER: IM 091-1(39)

FILE NAME: pave/pa202.dgn/pa202gr05.1 PLOT DATE: 02-JUN-2005 14:2  
PROJECT LEADER: WOOLLAVER DRAWN BY: REDMOND  
DESIGNED BY: REDMOND CHECKED BY:  
SHEET 36 OF 37

NOTE:  
ALL DIMENSIONS IN MILLIMETERS EXCEPT  
WHERE OTHERWISE INDICATED.

DATUM	
VERTICAL	N/A
HORIZONTAL	N/A