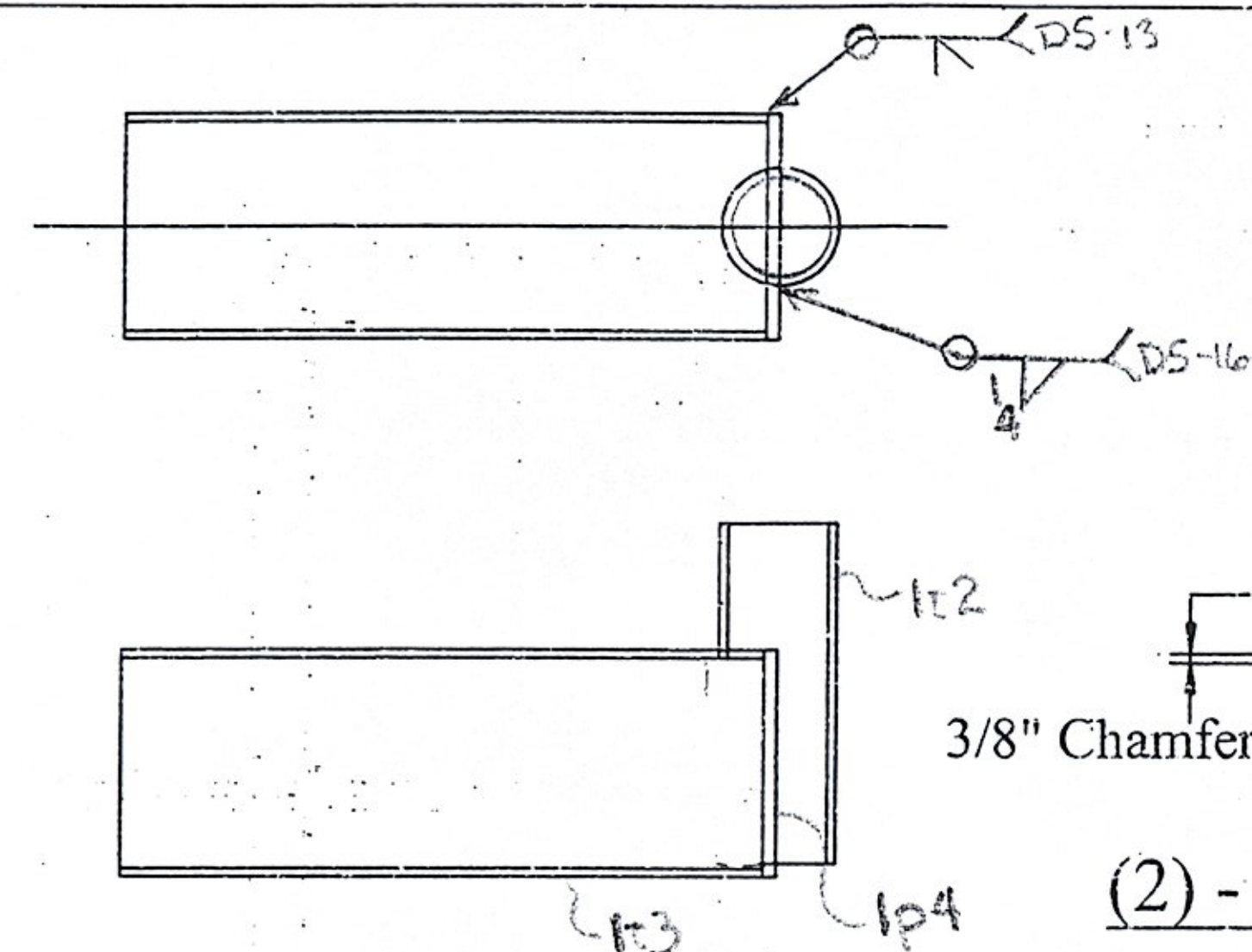


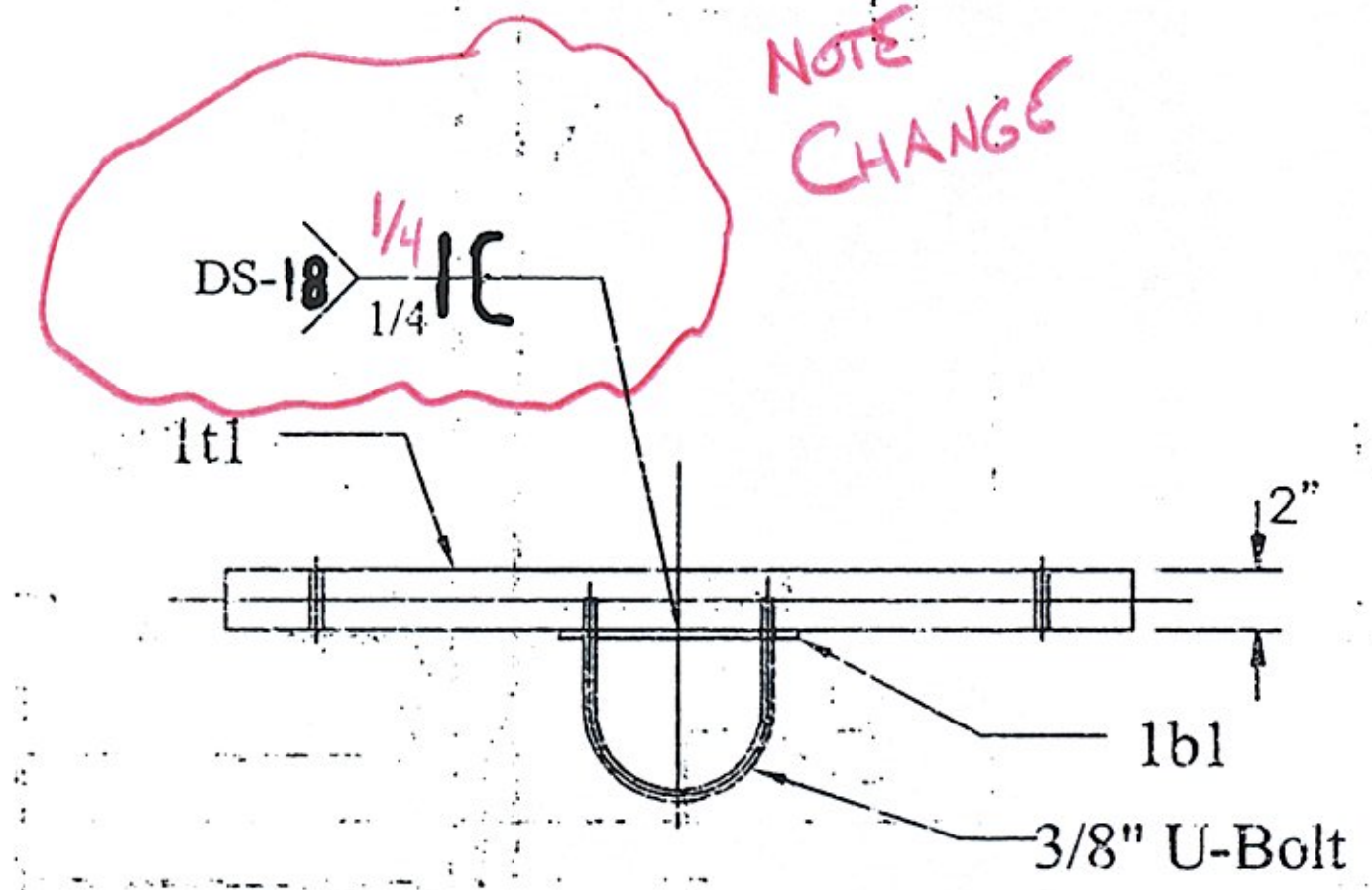
**SIDE VIEW**

**(2) - 1M1 BRIDGE MOUNTED SIGN STRUCTURE**

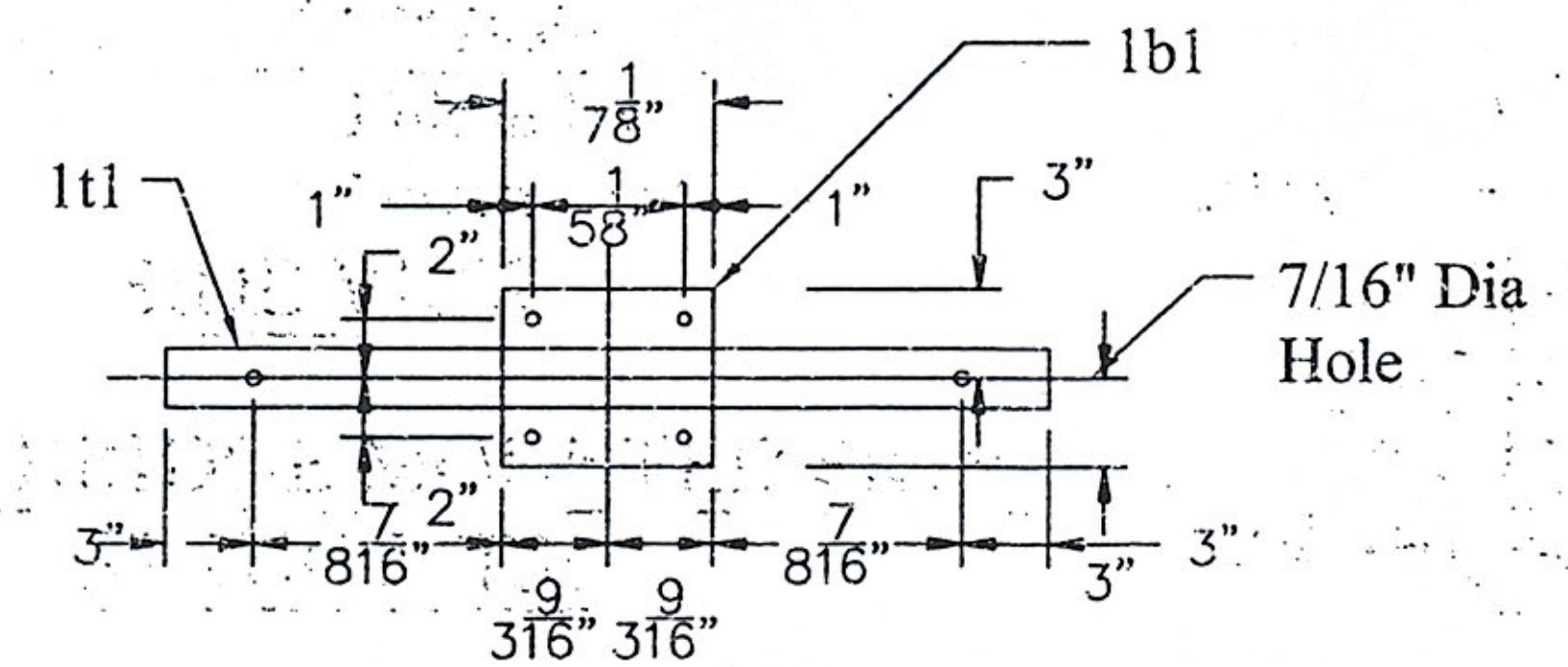
*STRUCTURES COPY*



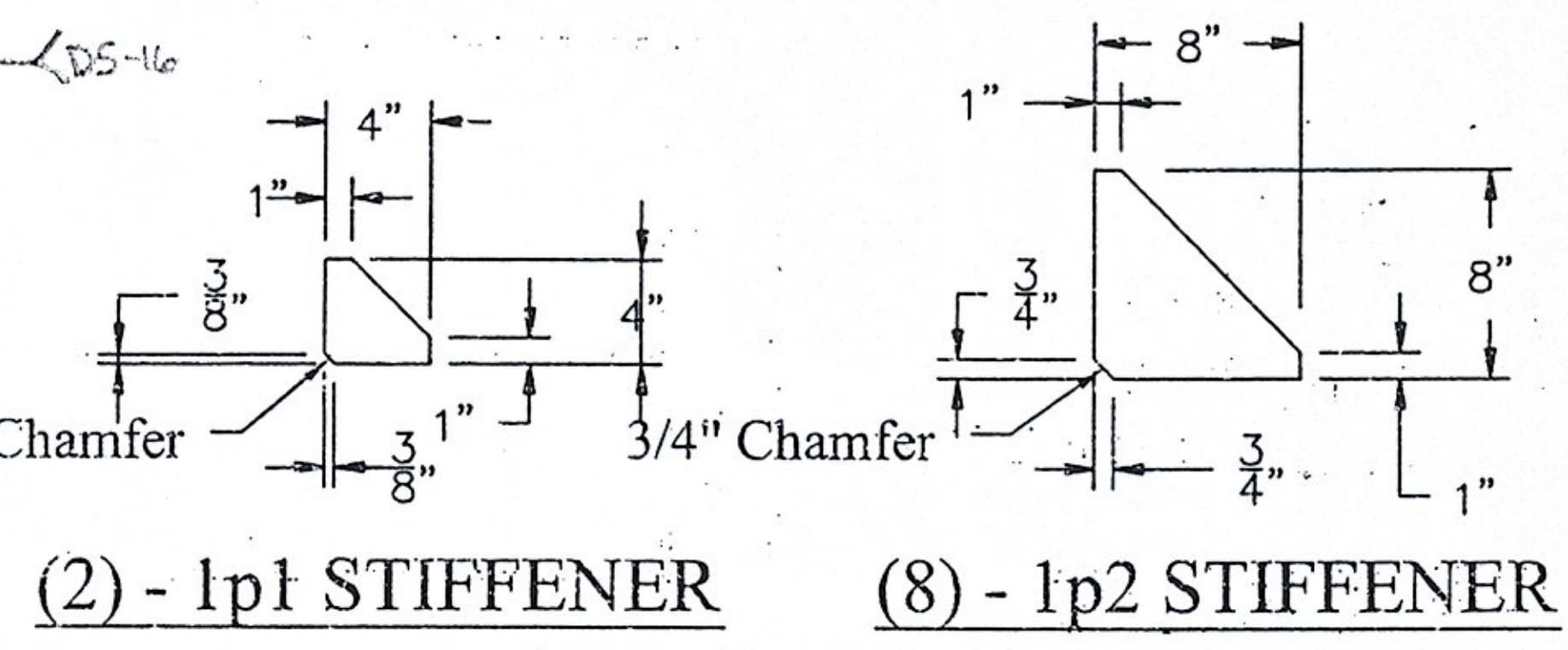
**VIEW OF 1t3, 1t2 & 1p4**



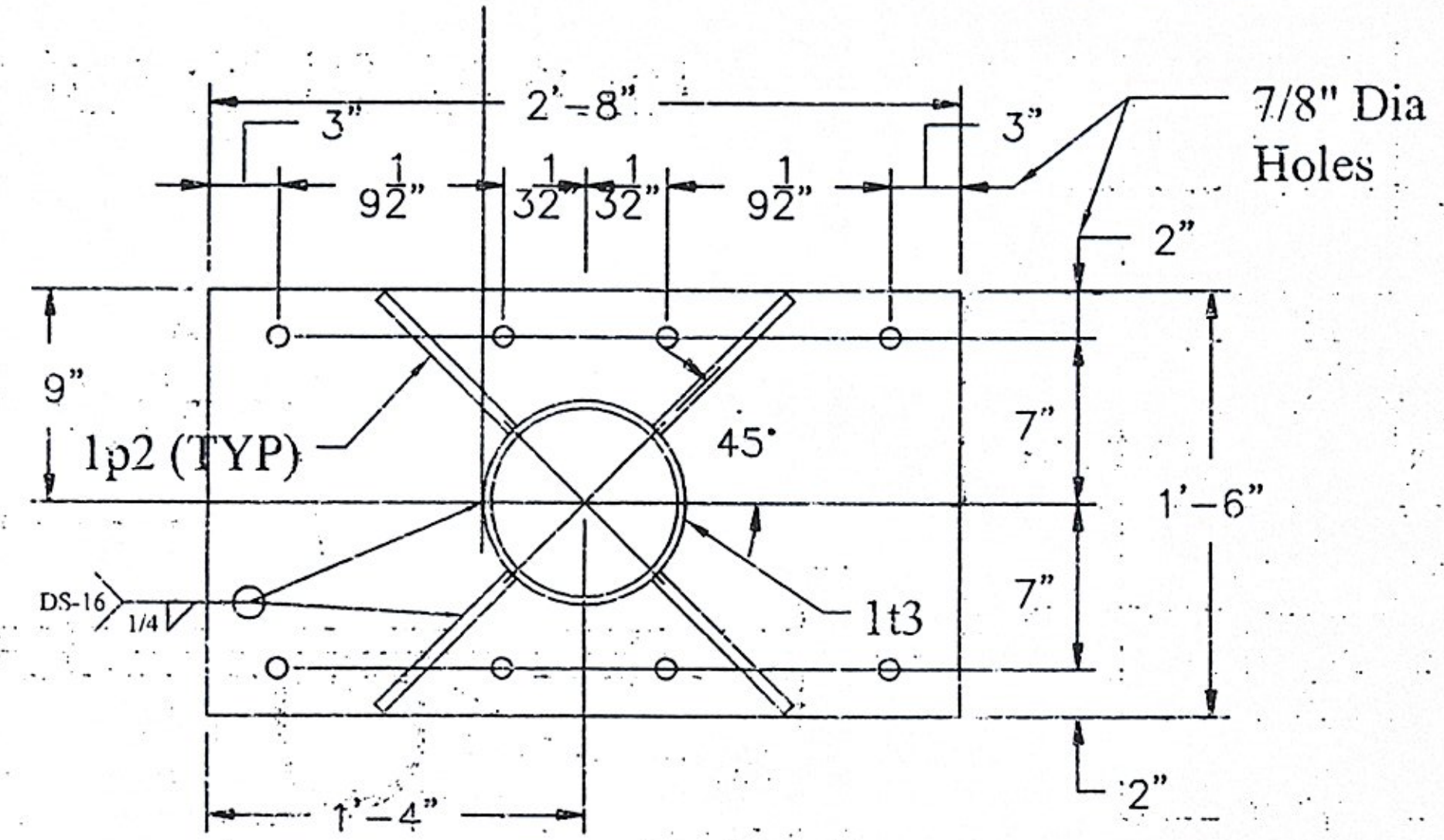
**TOP VIEW**



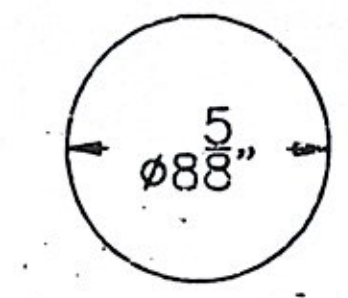
**(4) - 1C1 PIPE CLAMP**



**(2) - 1p1 STIFFENER (8) - 1p2 STIFFENER**



**(2) - 1p3 BOLT PLATE**



**(2) - 1p4 END CAP**

BILL OF MATERIALS				
QTY	MARK	SHAPE	LENGTH	REMARKS
4	1C1	PIPE CLAMP ASSEMBLY		
4	1b1	Bar 1/4 x 6	0'-7 1/8"	
4	1t1	Tube 2 x 2 x 3/16	2'-6"	
8		U-Bolt 3/8" x 5 1/8"		
		with 2 Nuts & 2 Washers		
8		3/8" Bolts ButtonHead x 3"		
		with Nut & Washer		
2	1S1	SIGN SUPPORT ASSEMBLY		
2	1f1	Friction Cap 4" Pipe		
2	1p1	Plate 3/8 x 4	0'-4"	
8	1p2	Plate 1/2 x 8	0'-8"	
2	1p3	Plate 1/2 x 1'-6"	2'-8"	
2	1p4	Plate 1/2 x 8 3/8"	0'-8 5/8"	
2	1t2	Pipe 4" x Sched 80	10'-5 7/8"	
2	1t3	Pipe 8" x Sched 40	2'-6"	
8		Bolts 3/4" Squarehead x 9"		
		1 3/4" Flat Washer & Lock Nut		
8		Bolts 3/4" Squarehead x 12" Bent		
		1 3/4" Flat Washer & Lock Nut		

- NOTES:
1. Fabricate sign mounts so sign support is vertical.
  2. Boils shall be A307.
  3. Pipe and structural tubing shall be ASTM A500, Grade B. Plates shall be ASTM A572, Grade 50.
  4. Sign support shall be galvanized after fabrication.
  5. *1/4" R CHAMFERED PLATE TO GALV.*

RECEIVED  
 DRAWN BY: *JKD* BY: *RST*  
 AUG 19 2008  
 RESUBMITTED: APPROVED *AS NOTED*  
 BY: *CPW* DATE: *9/14/08*

DRAWING COVERS	
<b>BRIDGE MOUNTED SIGN STRUCTURE</b>	
PROJECT	BERLIN 111 089-1(20)
LOCATION	1-89
ENGINEER	VERMONT AGENCY OF TRANSPORTATION
CUSTOMER	BECK & BELUCI, INC.

REV NO.	DATE	DESCRIPTION
1	8-1-2008	REVISED PER APPROVAL COMMENTS
0	3-14-2008	SUBMITTED FOR APPROVAL

HOLES AS NOTED  
 MATERIAL: ASTM A572, GRADE 50 GALV

**MERRIMACK SHEET METAL**  
 119 HALL STREET  
 CONCORD NH 03301  
 Tel. 603.224.7766  
 Fax 603.224.7925

DRAWN BY: RL  
 CHECKED BY: JD  
 JOB NO: #2004  
 DWG: F1