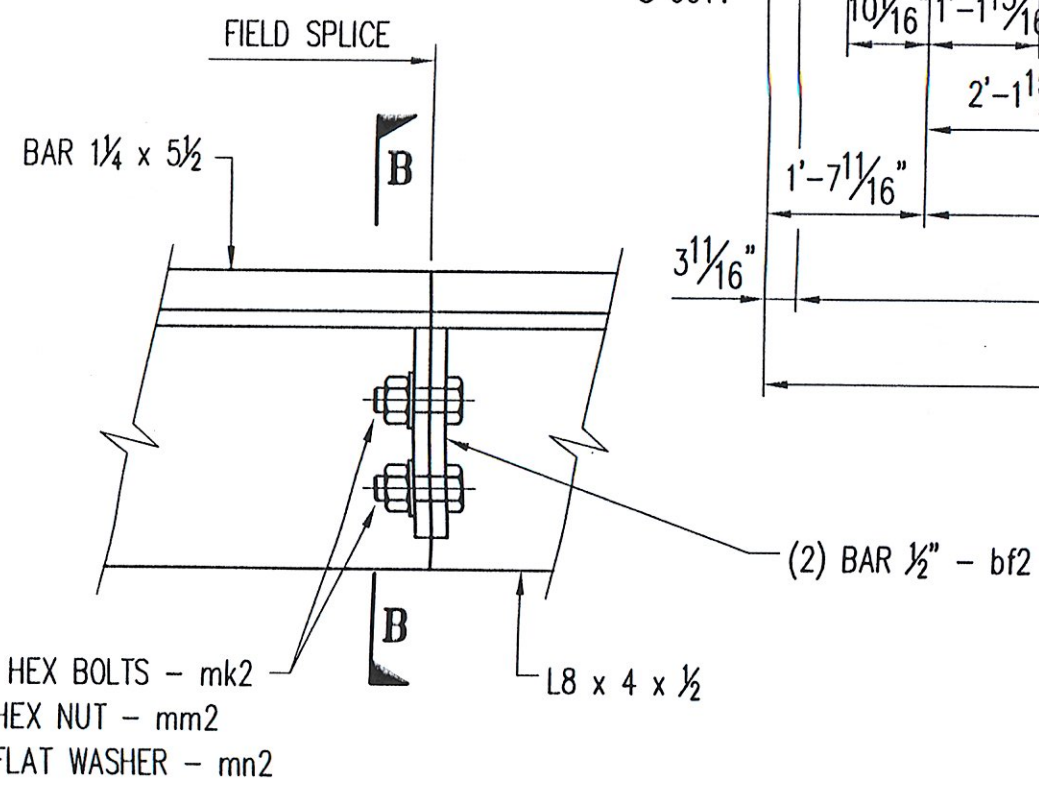
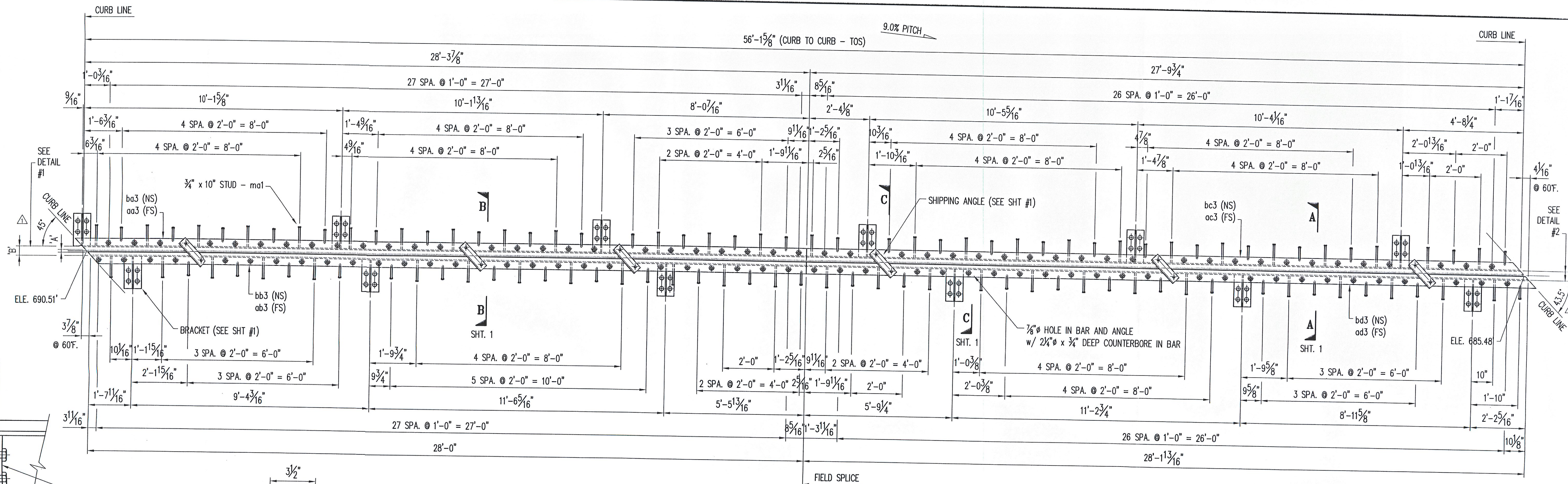
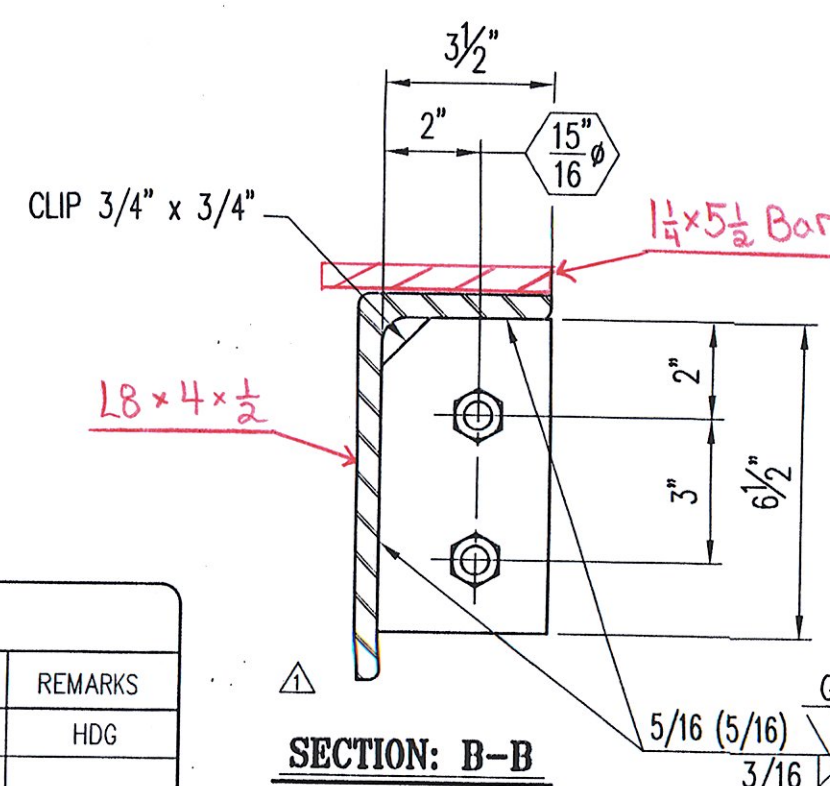




JOINT OPENING		
TEMP	'A'	'B'
105° F.	1/2"	3/2"
90° F.	5/8"	3 3/4"
75° F.	3/4"	3 3/4"
60° F.	7/8"	3 3/4"
45° F.	1 1/8"	3 3/4"
30° F.	1 1/4"	4 1/8"
15° F.	1 3/8"	4 3/8"
0° F.	1 1/2"	4 1/2"
-15° F.	1 5/8"	4 5/8"



BOLTED FIELD SPLICE DETAIL



SECTION: B-B

SHOP NOTES:

1. WORK THIS SHEET ALONG WITH STANDARD SHEET #1.
2. COAT ALL BOLTS AND NUTS WITH NEVER SEIZE GREASE PRIOR TO ASSEMBLY.
3. WRENCH TIGHTEN BOLTS AFTER ASSEMBLY OF THE EXPANSION JOINT.
4. SEAL ALL ACCESSIBLE JOINTS PRIOR TO GALVANIZING.

CONTRACTOR NOTES:

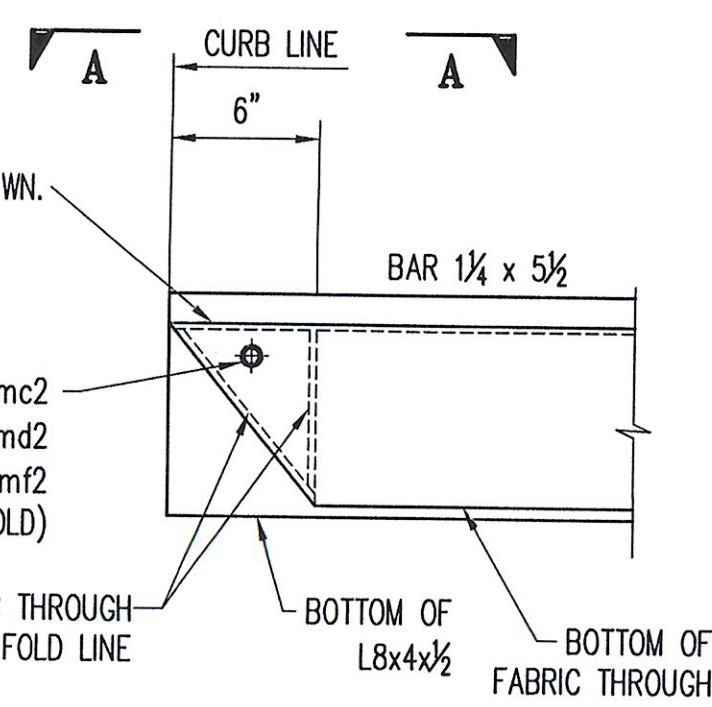
1. REMOVE SHIPPING ANGLES AND REPLACE WITH 3/4" x 2 1/4" HEX BOLTS. REUSE EXISTING FLAT WASHERS. COAT BOLT TREADS WITH NEVER SEIZE PRIOR TO ASSEMBLY.
2. FILL ALL COUNTERBORED HOLES WITH HOT POURED JOINT SEALER AFTER THE BOLT INSTALLATION. WORK AND MATERIALS ARE TO BE DONE BY OTHERS.

ONE - EXPANSION JOINT - 3EJ1
PIER #2

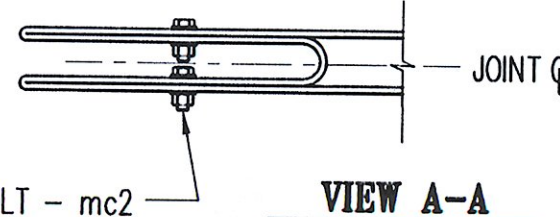
#	MARK No.	QTY	DESCRIPTION	MATERIAL	REMARKS
1			ONE - EXPANSION JOINT - 3EJ1		HDC
2	aa1	6	L4 x 4 x 1/2 x 1'-3"	A36	
3	ma1	52	3/4" x 10 CONCRETE HEADED STUD	A108	
4	mb1	51	3/4" x 10 CONCRETE HEADED STUD	A108	BENT
5	mc1	4	1/16" x 1 1/2 (MIN) BUTYL RUBBER TAPE (SOFT ROLL)	AASHTO M-198	#75385A15
6	md1	111	3/4" x 2 1/4 HEX BOLT	A325	M/G
7	mf1	12	3/4" x 3 3/4 HEX BOLT	A325	M/G
8	mh1	111	3/4" FLAT WASHER	F436	M/G
9	mk1	111	3/4" HEX COUPLER NUT	A563	M/G
10	mm1	48	1" x 7/8 THREADED ROD	A36	HDC
11	ms1	96	1" HEAVY HEX NUT	A563	HDC
12	pa1	12	PL 1/2 x 6 x 1'-3"	A36	
13	pb1	12	PL 1/2 x 8 x 1'-3"	A36	
14	pd1	96	PL 3/8 x 3 x 3	A36	HDC
15	aa3	ONE	L8 x 4 x 1/2 x 28'-7 7/8	A36	
16	ab3	ONE	L8 x 4 x 1/2 x 28'-0	A36	
17	ac3	ONE	L8 x 4 x 1/2 x 27'-9 3/4	A36	
18	ad3	ONE	L8 x 4 x 1/2 x 28'-6	A36	
19	ba3	ONE	BAR 1 1/4 x 5 1/2 x 28'-7 7/8	A36	
20	bb3	ONE	BAR 1 1/4 x 5 1/2 x 28'-1 1/2	A36	
21	bc3	ONE	BAR 1 1/4 x 5 1/2 x 27'-11 5/16	A36	
22	bd3	ONE	BAR 1 1/4 x 5 1/2 x 28'-6	A36	
23	bf2	4	BAR 1/2 x 3 1/2 x 6 1/2	A36	
24	ma3	ONE	3 PLY FABRIC TROUGH 5/32 x 36 x 56'-6	PER SPEC	
25	mb2	ONE	3 PLY FABRIC DRIP 5/32 x 1/4 x 7	PER SPEC	
26	mc2	ONE	1/2" x 1" HEX BOLT	A307	M/G
27	md2	ONE	1/2" HEX NUT	A563	M/G
28	mf2	ONE	1/2" FLAT WASHER	F436	M/G
29	mh2	ONE	ANTI SEIZE GREASE		
30	mk2	4	7/8" x 2 HEX BOLT	A325	M/G
31	mm2	4	7/8" HEX NUT	A563	M/G
32	mn2	4	7/8" FLAT WASHER	F436	M/G
33					

FOLD THE END OF THE FABRIC TROUGH AS SHOWN. DRILL 3/8" HOLES IN FABRIC TROUGH. USE HARDWARE TO CLOSE OFF THE CHANNEL.

- (2) 1/2" x 1" HEX BOLT - mc2
 - (2) 1/2" HEX NUT - md2
 - (4) 1/2" FLAT WASHER - mf2
- THRU FABRIC (TYP. BOTH SIDES OF FOLD)

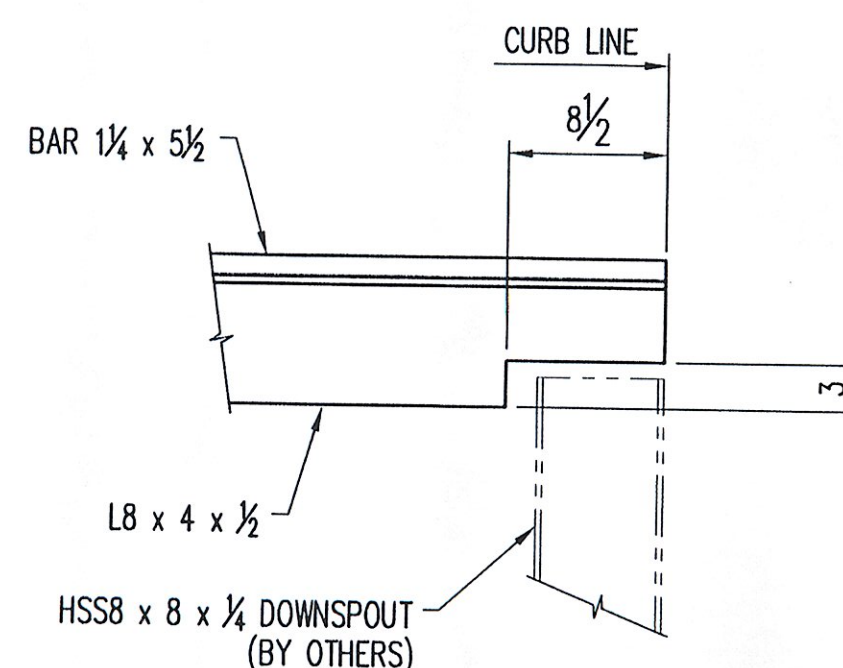


DETAIL #1
FOLDED THROUGH END DETAILS

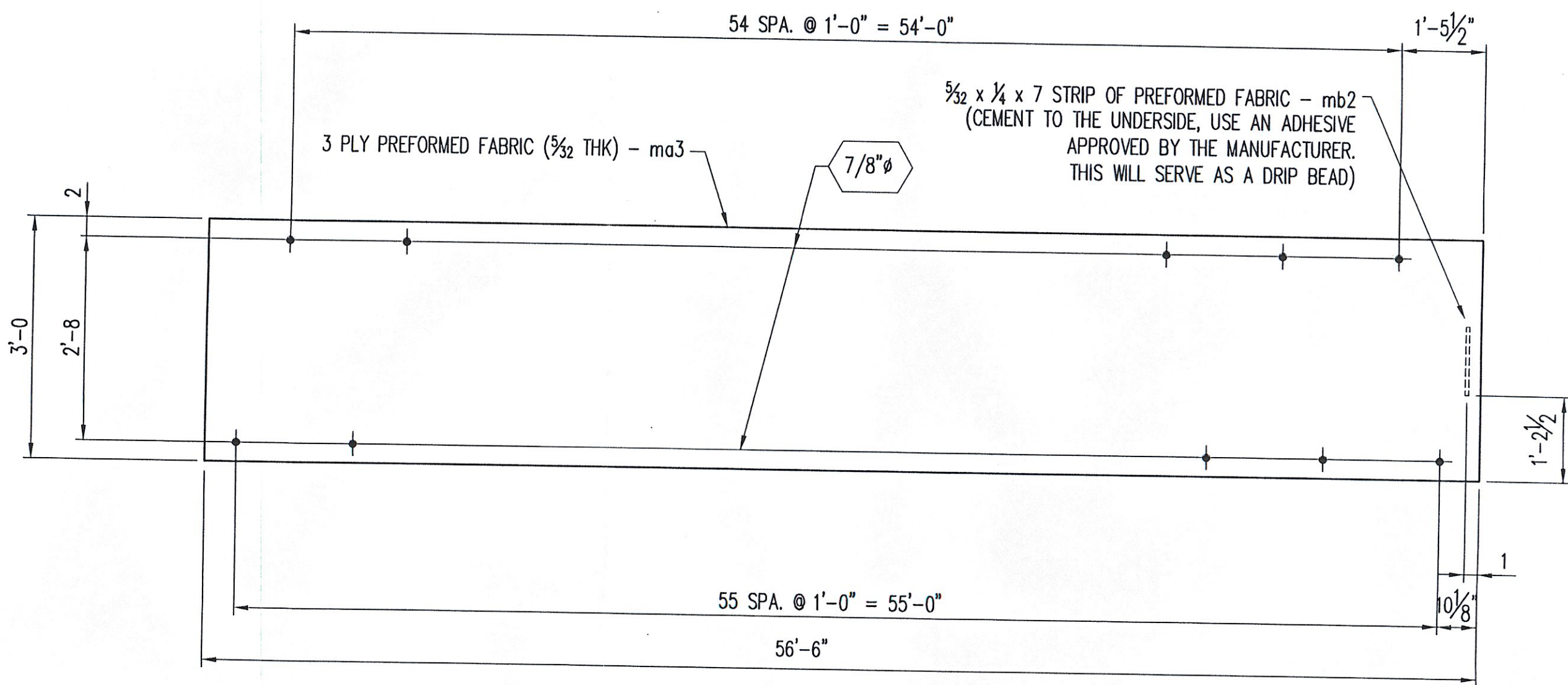


VIEW A-A

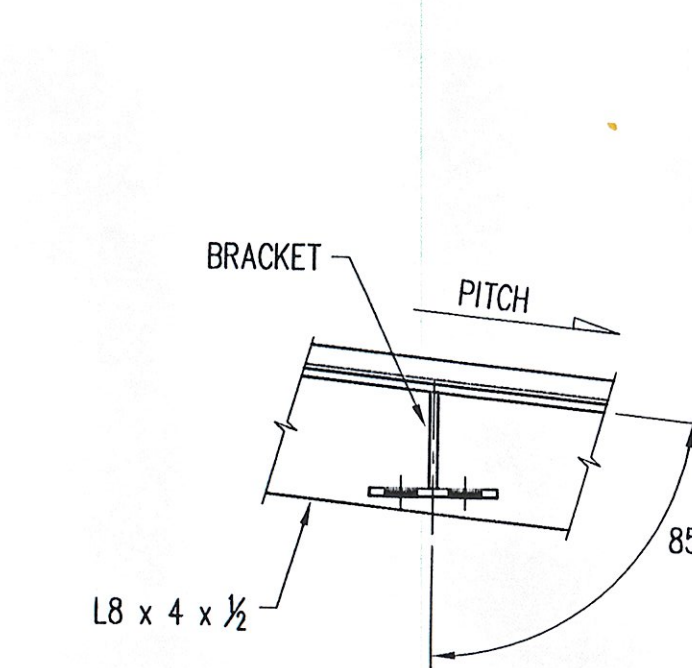
- (2) 1/2" x 1" HEX BOLT - mc2
 - (2) 1/2" HEX NUT - md2
 - (4) 1/2" FLAT WASHER - mf2
- THRU FABRIC (TYP. BOTH SIDES OF FOLD)



DETAIL #2



TROUGH DETAIL



BRACKET ATTACHMENT

RECEIVED
 CK'D BY LJS OK'D BY RST
 MAY - 7 2008
 RESUBMIT APPROVED BY Noted
 BY CPW DATE 5/31/08

Niagara Bridge and Rail
 4817 Henry Avenue, Niagara Falls, N.Y. 14304
 Phone: (716) 283-4710 Fax: (716) 283-5137

Project Information:
 STATE: VERMONT
 COUNTY:
 CITY / TOWNSHIP: BERLIN
 LOCATION: I-89 (NB & SB) OVER VT ROUTE 12
 PROJECT NO.: IM 089-1 (20)
 OWNER: VT-AOT
 CONTRACTOR:

Drawn By: JJB Date: 3/28/08 Checked By: TFW Date: 3/30/08
 Description: VERMONT - EXPANSION JOINT DETAIL EXPANSION JOINT @ PIER 2
 Sheet No.: 3 of 5 Scale: NONE
 Drawing No.: 10064-01 Rev No.: 1

No.	Description	Date	By	Approved
1	REVISIONS PER APPROVAL DWGS	4/29/08	SB	