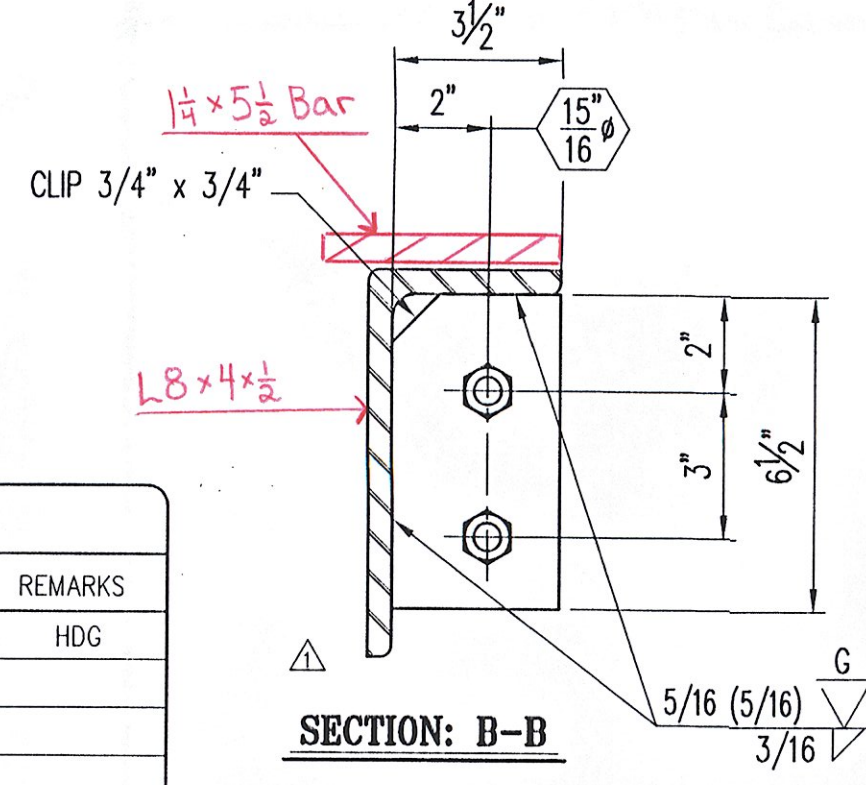
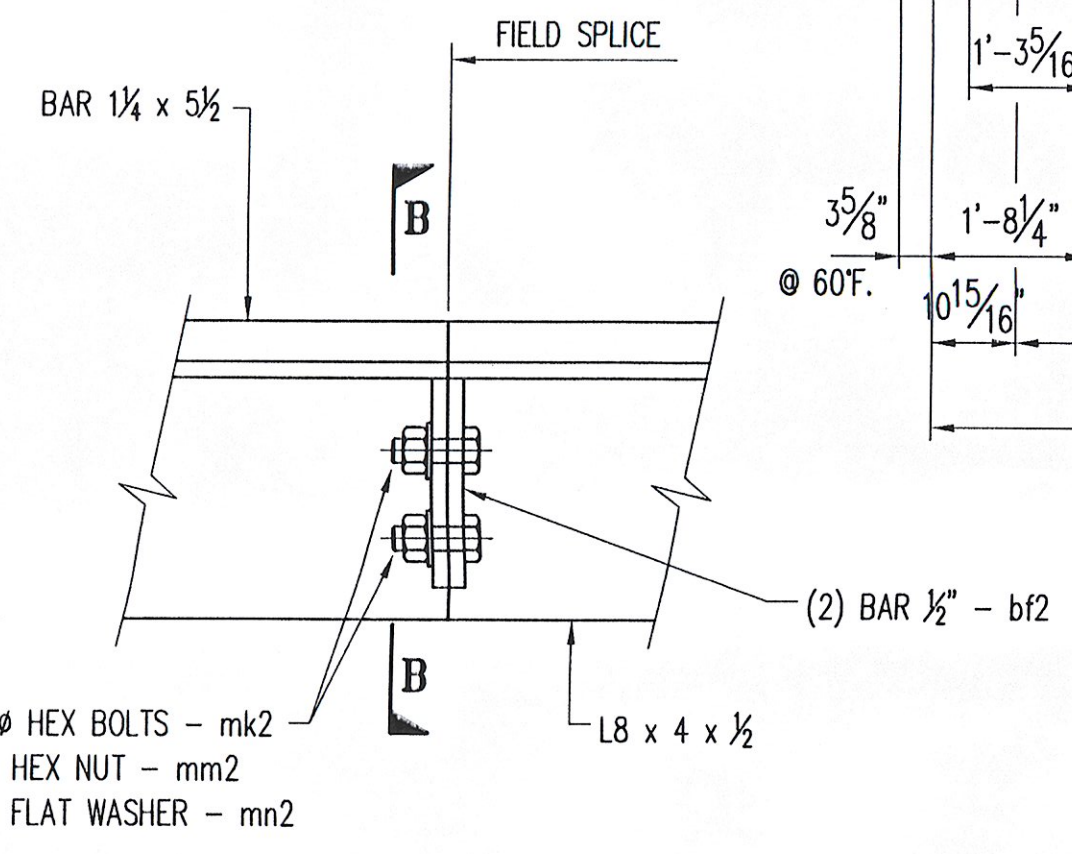
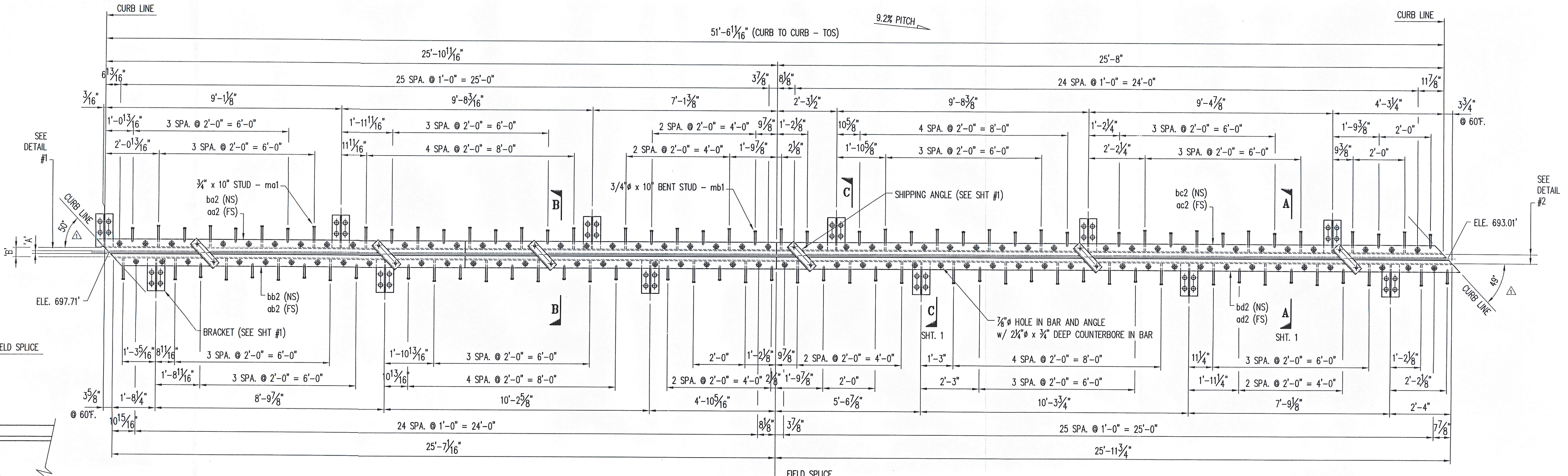




JOINT OPENING		
TEMP	'A'	'B'
105° F.	1/2"	3/2"
90° F.	3/4"	3 3/4"
75° F.	1"	4"
60° F.	1 1/8"	4 9/16"
45° F.	1 1/4"	4 3/8"
30° F.	1 3/8"	4 1/8"
15° F.	2 3/8"	5 3/8"
0° F.	2 3/4"	5 3/4"
-15° F.	2 7/8"	5 7/8"



SHOP NOTES:

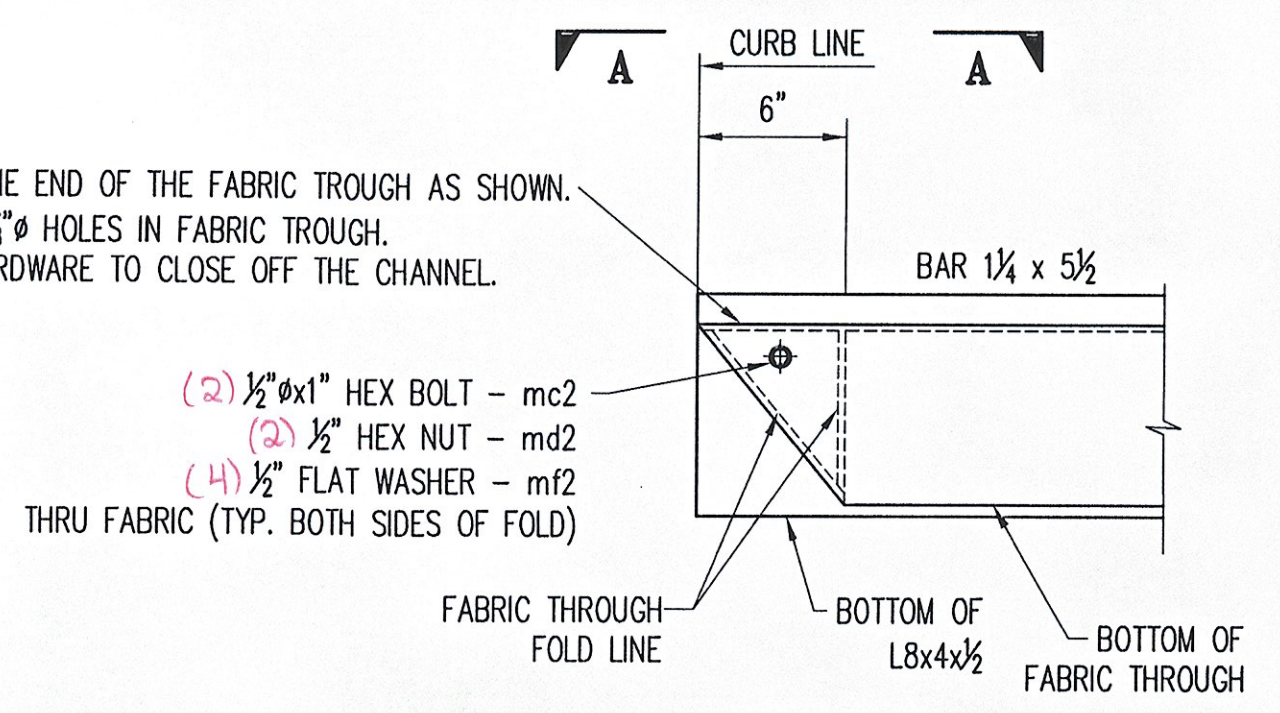
1. WORK THIS SHEET ALONG WITH STANDARD SHEET #1.
2. COAT ALL BOLTS AND NUTS WITH NEVER SEIZE GREASE PRIOR TO ASSEMBLY.
3. WRENCH TIGHTEN BOLTS AFTER ASSEMBLY OF THE EXPANSION JOINT.
4. SEAL ALL ACCESSIBLE JOINTS PRIOR TO GALVANIZING.

CONTRACTOR NOTES:

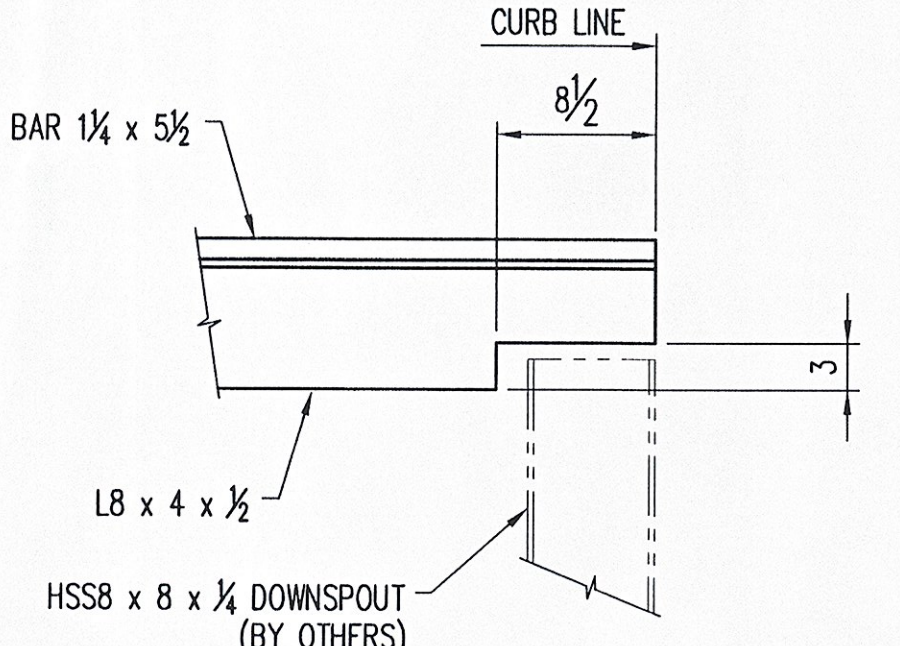
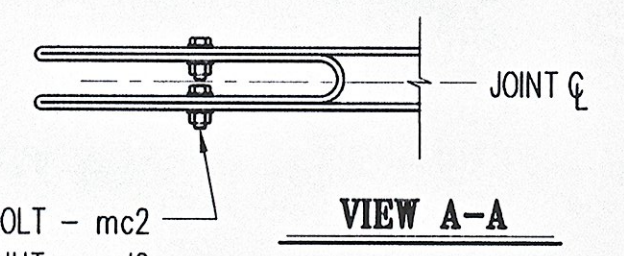
1. REMOVE SHIPPING ANGLES AND REPLACE WITH 3/4" x 2 1/4" HEX BOLTS. REUSE EXISTING FLAT WASHERS. COAT BOLT TREADS WITH NEVER SEIZE PRIOR TO ASSEMBLY.
2. FILL ALL COUNTERBORED HOLES WITH HOT POURED JOINT SEALER AFTER THE BOLT INSTALLATION. WORK AND MATERIALS ARE TO BE DONE BY OTHERS.

#	MARK No.	QTY	DESCRIPTION	MATERIAL	REMARKS
1			ONE - EXPANSION JOINT - 2EJ1		HGD
2	aa1	6	L4 x 4 x 1/2 x 1'-3"	A36	
3					
4	ma1	47	3/4" x 10" CONCRETE HEADED STUD	A108	
5	mb1	45	3/4" x 10" CONCRETE HEADED STUD	A108	BENT
6	mc1	5	1/16" x 1 1/2" (MIN) BUTYL RUBBER TAPE (SOFT ROLL)	AASHTO M-198 #75385A15	
7	md1	102	3/4" x 2 1/4" HEX BOLT	A325	M/G
8	mf1	12	3/4" x 3 3/4" HEX BOLT	A325	M/G
9	mh1	102	3/4" FLAT WASHER	F436	M/G
10	mk1	102	3/4" HEX COUPLER NUT	A563	M/G
11	mm1	48	1" x 18" THREADED ROD	A36	HGD
12	ms1	96	1" HEAVY HEX NUT	A563	HGD
13	pa1	12	PL 1/2 x 6 x 1'-3"	A36	
14	pb1	12	PL 1/2 x 8 x 1'-3"	A36	
15	pd1	96	PL 3/8 x 3 x 3"	A36	HGD
16	aa2	ONE	L8 x 4 x 1/2 x 26'-2 1/16"	A36	
17	ab2	ONE	L8 x 4 x 1/2 x 25'-7 1/16"	A36	
18	ac2	ONE	L8 x 4 x 1/2 x 25'-8"	A36	
19	ad2	ONE	L8 x 4 x 1/2 x 26'-3 1/4"	A36	
20	ba2	ONE	BAR 1 1/4 x 5 1/2 x 26'-2 1/16"	A36	
21	bb2	ONE	BAR 1 1/4 x 5 1/2 x 25'-8 5/16"	A36	
22	bc2	ONE	BAR 1 1/4 x 5 1/2 x 25'-9 5/16"	A36	
23	bd2	ONE	BAR 1 1/4 x 5 1/2 x 26'-3 1/4"	A36	
24	bf2	4	BAR 1/2 x 3 1/2 x 6 1/2"	A36	
25	ma2	ONE	3 PLY FABRIC TROUGH 5/32 x 36 x 51'-11"	PER SPEC	
26	mb2	ONE	3 PLY FABRIC DRIP 5/32 x 1/4 x 7"	PER SPEC	
27	mc2	ONE	1/2" x 1" HEX BOLT	A307	M/G
28	md2	ONE	1/2" HEX NUT	A563	M/G
29	mf2	4	1/2" FLAT WASHER	F436	M/G
30	mh2	ONE	ANTI SEIZE GREASE	-	
31	mk2	4	7/8" x 2 HEX BOLT	A325	M/G
32	mm2	4	7/8" HEX NUT	A563	M/G
33	mn2	4	7/8" FLAT WASHER	F436	M/G

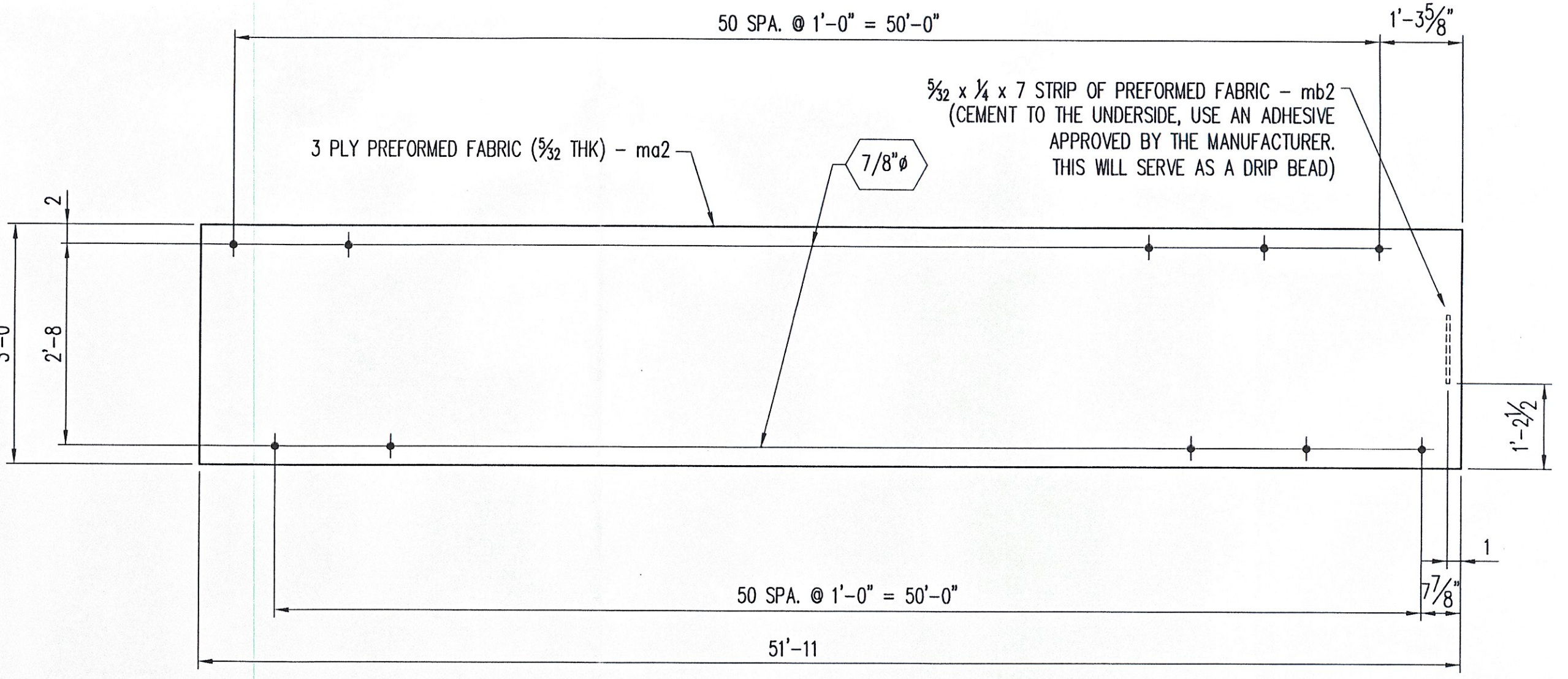
FOLD THE END OF THE FABRIC TROUGH AS SHOWN. DRILL 5/8" HOLES IN FABRIC TROUGH. USE HARDWARE TO CLOSE OFF THE CHANNEL.



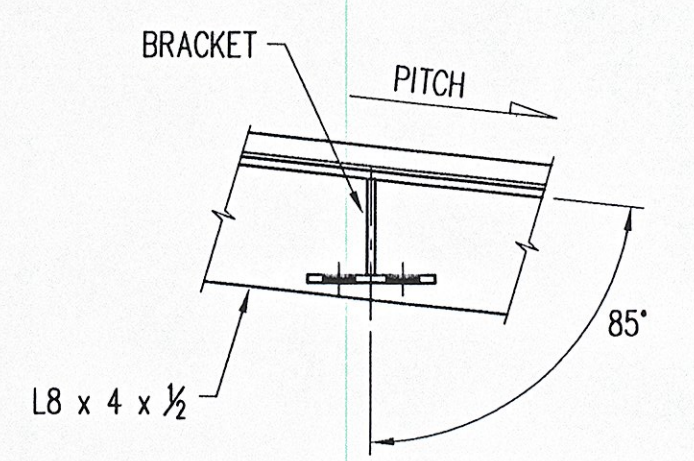
DETAIL #1 FOLDED THROUGH END DETAILS



DETAIL #2



TROUGH DETAIL



BRACKET ATTACHMENT

RECEIVED
 CK'D BY JSS OK'D BY RSY
 MAY - 7 2008
 RESUBMIT APPROVED PIS NOTED
 BY CPW DATE 5/8/08

Niagara Bridge and Rail
 4817 Henry Avenue, Niagara Falls, N.Y. 14304
 Phone: (716) 283-4710 Fax: (716) 283-5137

Project Information:
 STATE: VERMONT
 COUNTY:
 CITY / TOWNSHIP: BERLIN
 LOCATION: I-89 (NB & SB) OVER VT ROUTE 12
 PROJECT NO.: 1M 089-1 (20)
 OWNER: VT-AOT
 CONTRACTOR:

Drawn By: JUB Date: 3/28/08 Checked By: TFW Date: 3/30/08
 Description: VERMONT - EXPANSION JOINT DETAIL EXPANSION JOINT @ PIER 1 Sheet No.: 2 of 5 Scale: NONE
 Drawing No.: 10064-01 Rev No.: 1

REVISIONS PER APPROVAL DRAWINGS	4/29/08	SB
No.	Description	Date By Approved