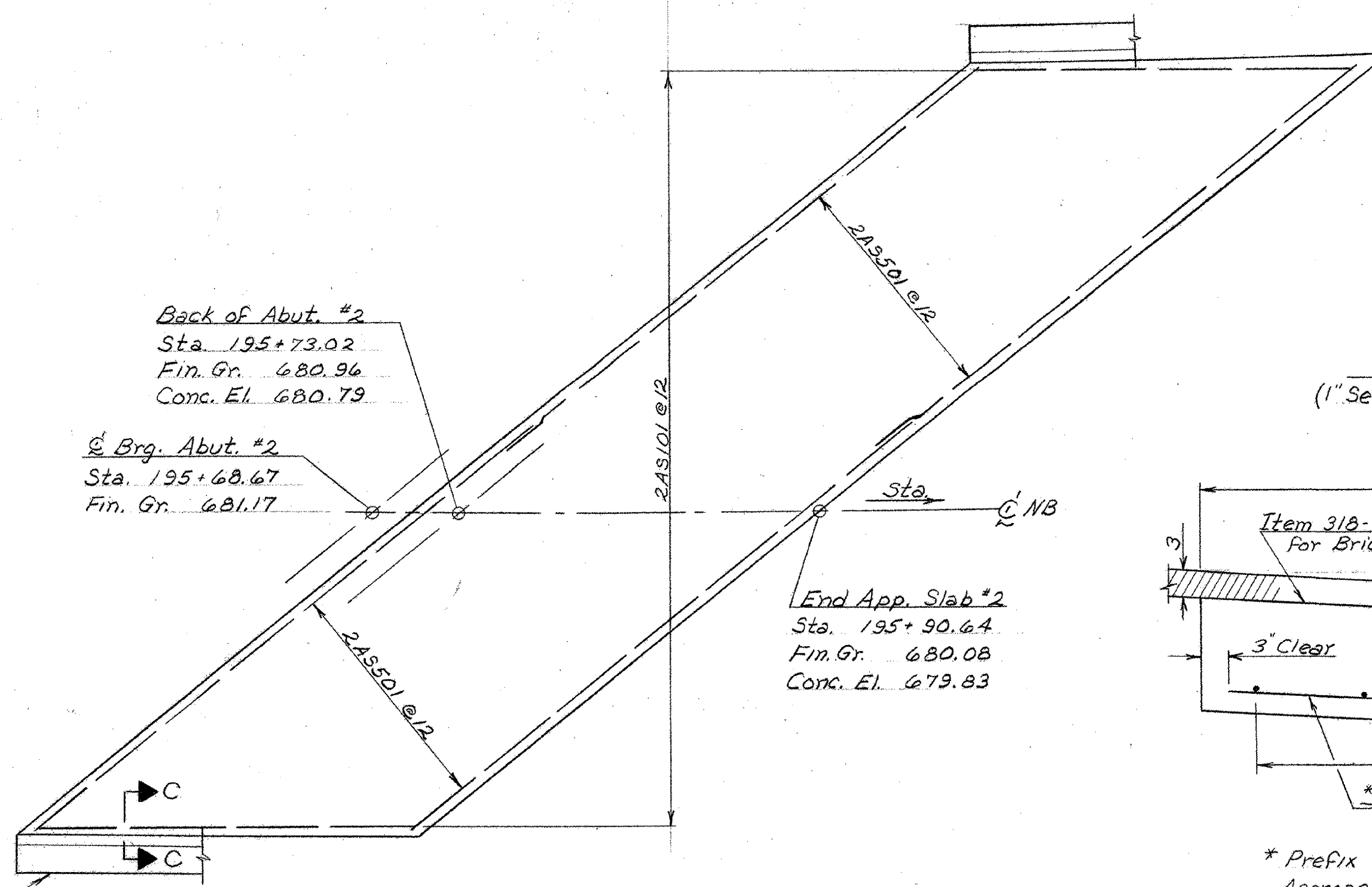
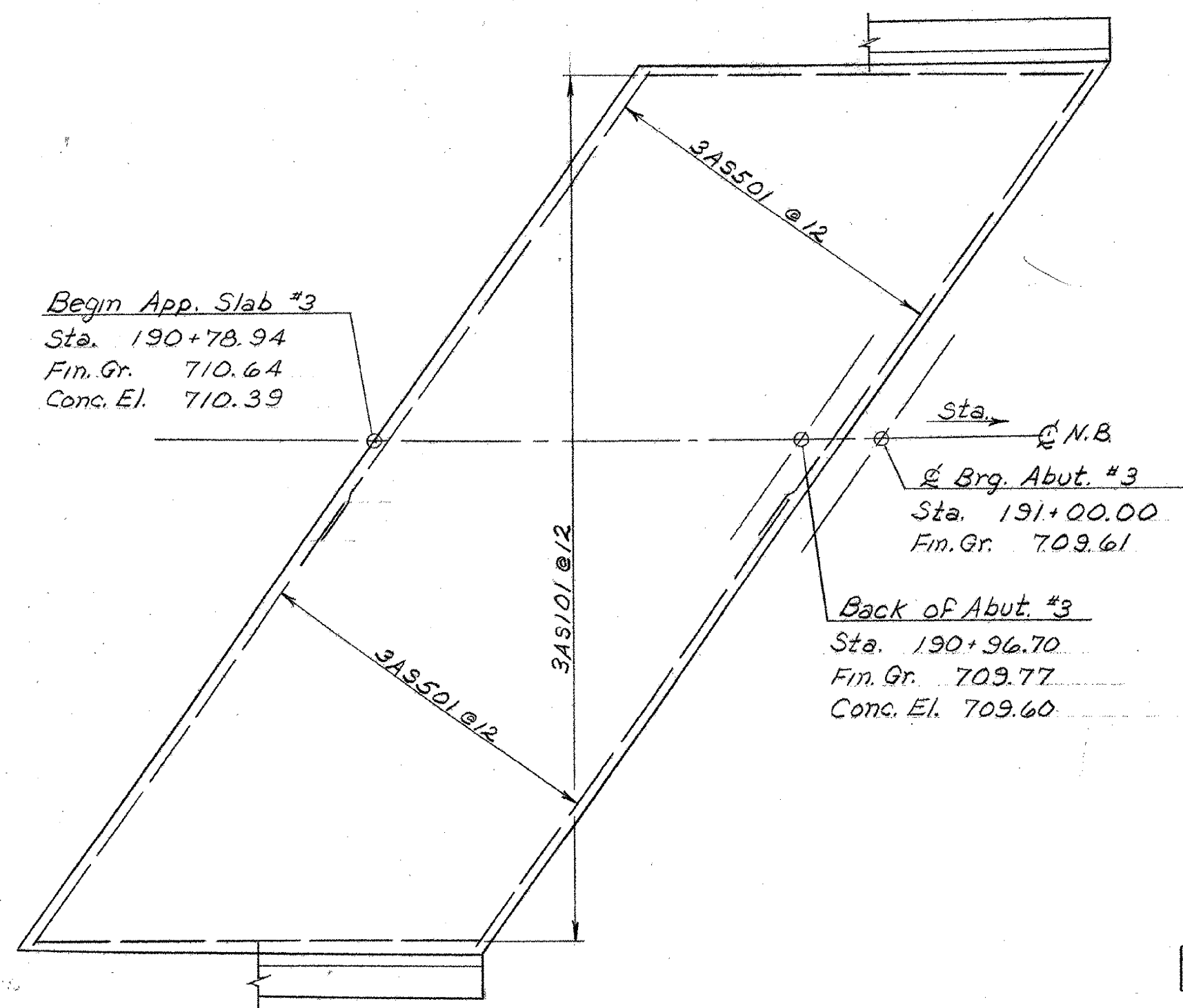


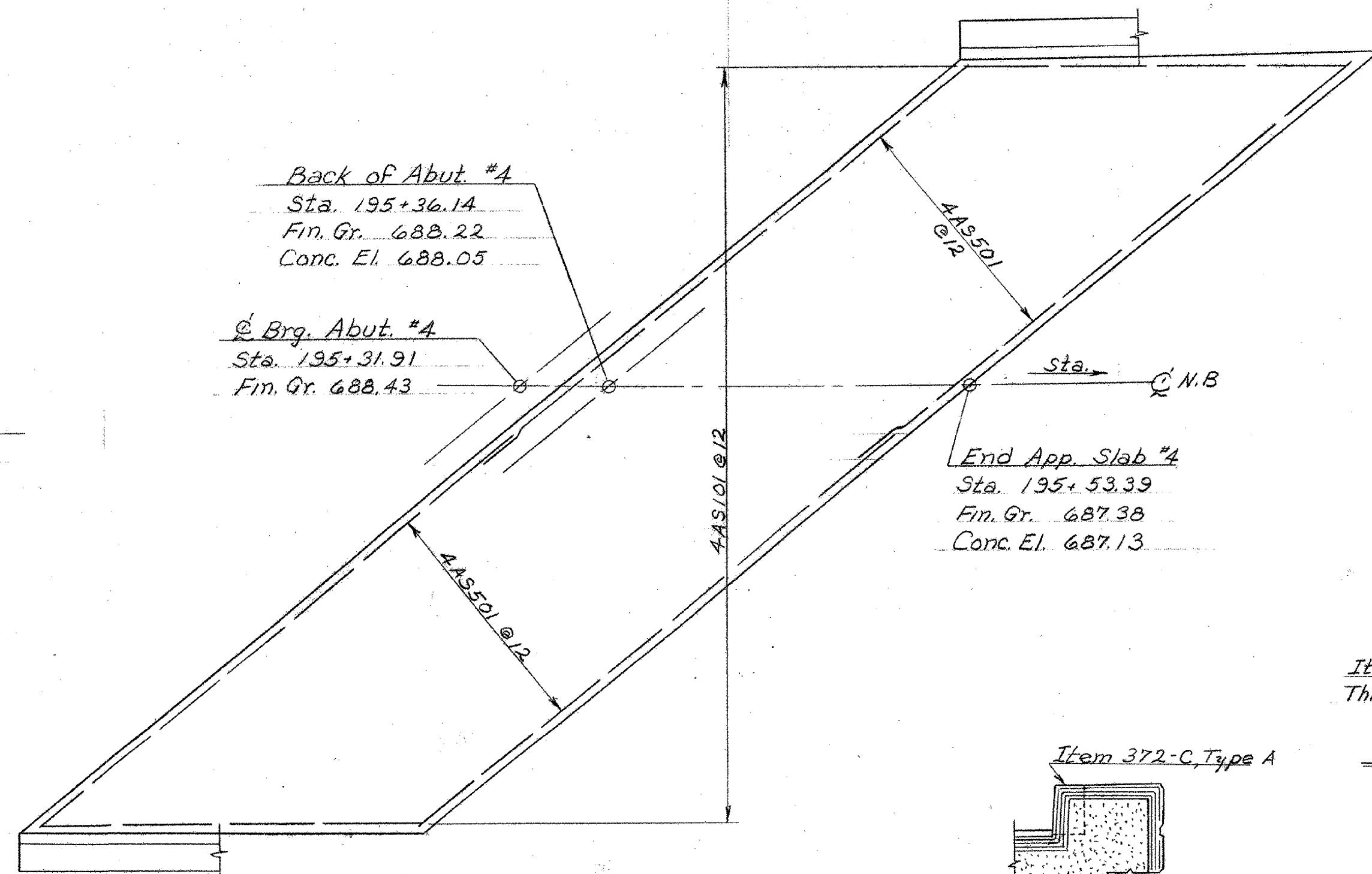
PLAN - APPROACH SLAB #1
SCALE: 3/16" = 1'-0"



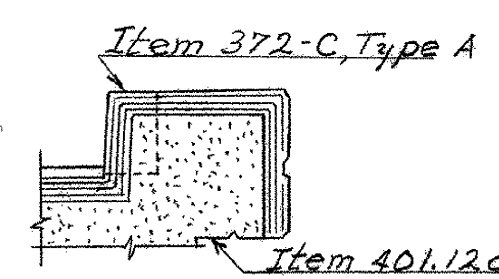
PLAN - APPROACH SLAB #2
SCALE: 3/16" = 1'-0"



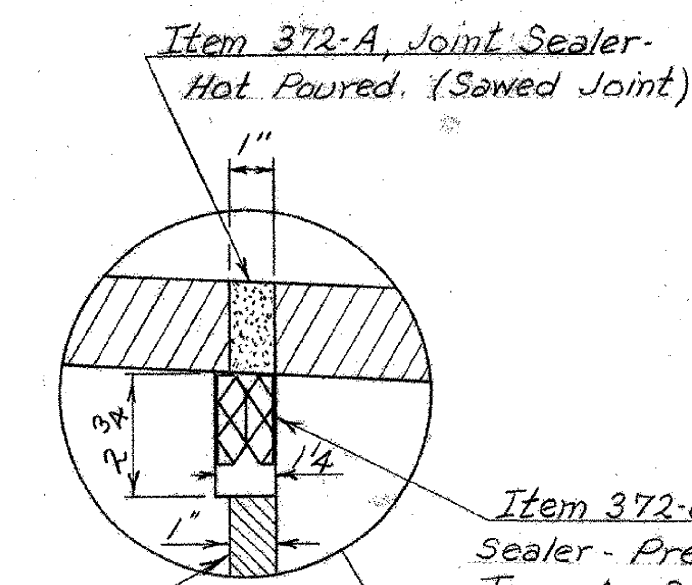
PLAN - APPROACH SLAB #3
SCALE: 3/16" = 1'-0"



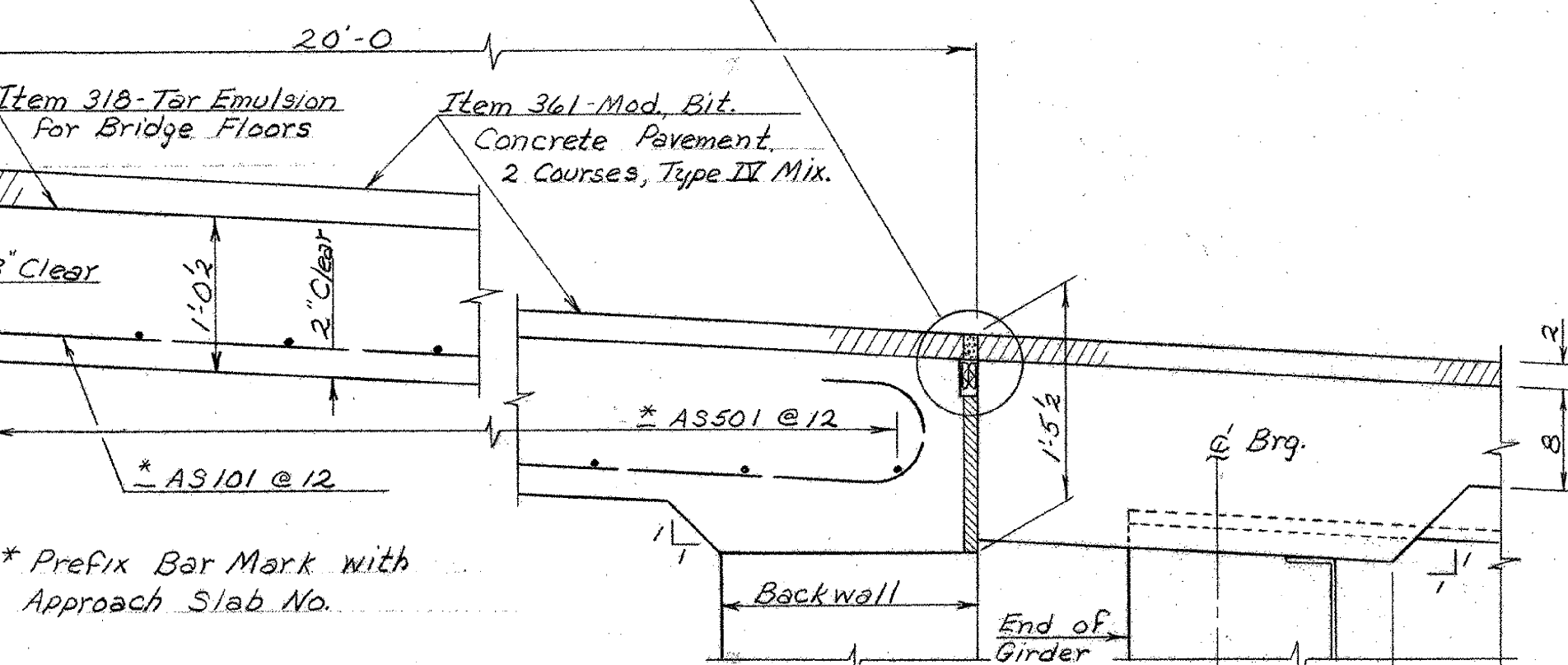
PLAN - APPROACH SLAB #4
SCALE: 3/16" = 1'-0"



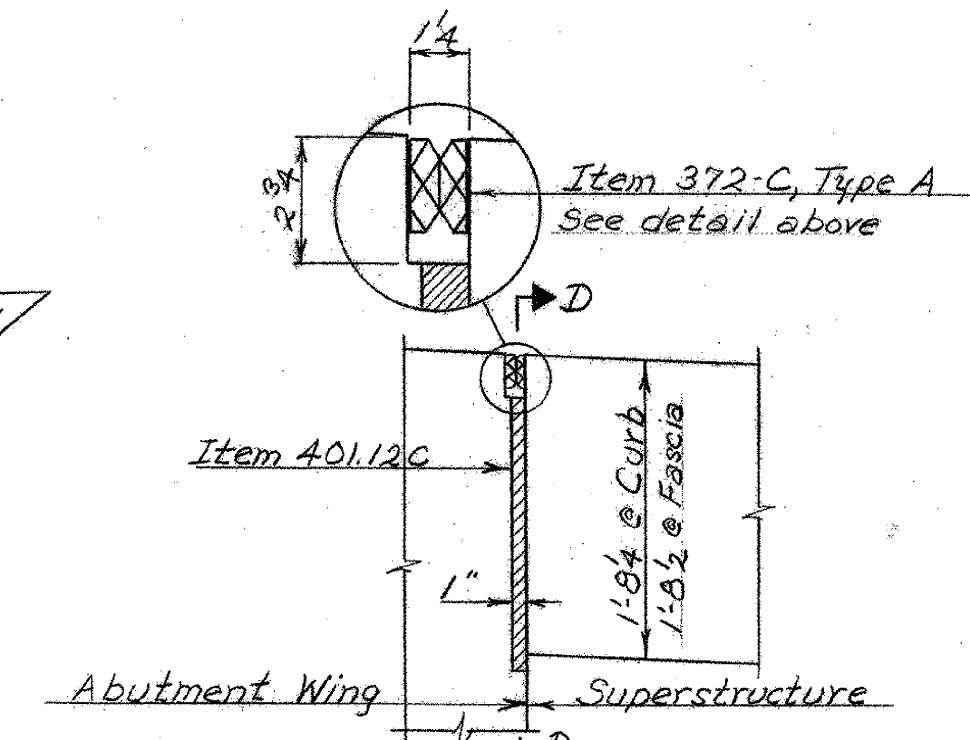
SECTION D-D
N.T.S.



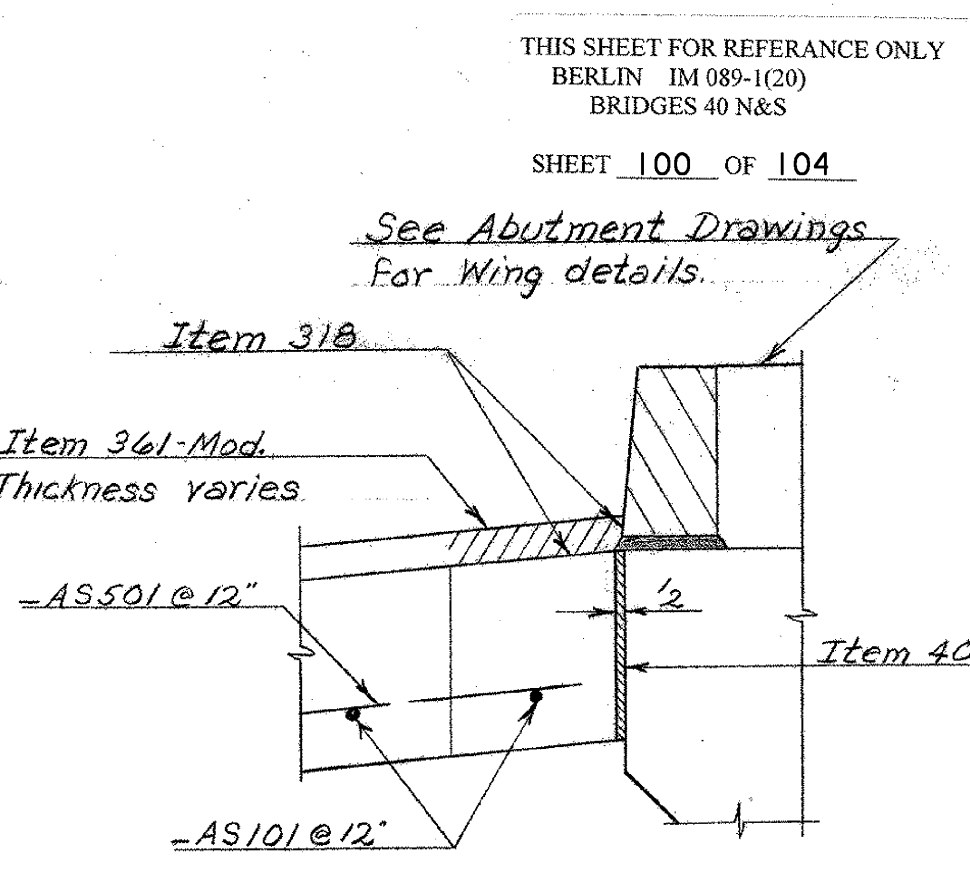
SECTION A-A
SCALE: 1" = 1'-0"



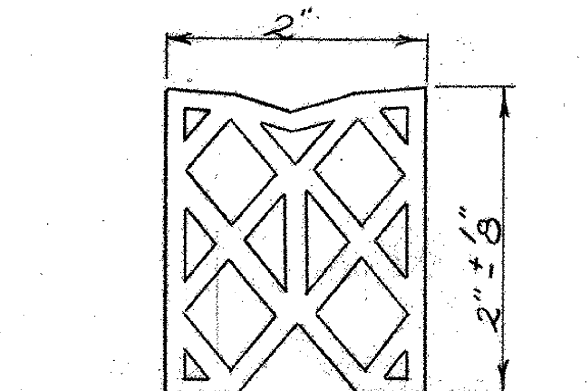
* Prefix Bar Mark with Approach Slab No.



SECTION B-B
SCALE: 1" = 1'-0"



SECTION C-C
SCALE: 1" = 1'-0"



DETAIL - ITEM 372-C - JOINT SEALER - PREFORMED - TYPE A
NOT TO SCALE
Material to be Premolded Neoprene Other configurations that satisfy Specifications may be used.

NOTES

1. See Br. 400 for General Notes.
2. Slope Approach Slabs to provide for 3" of Bit. Conc. at Roadway end and 2" at Bridge end.
3. Premolded Joint Sealer is to be continuous across roadway and curb from fascia to fascia.
4. Cross slopes of Approach Slabs to be same as for Bridge.

THIS SHEET FOR REFERENCE ONLY
BERLIN IM 089-1120
BRIDGES 40 N&S
SHEET 100 OF 104

See Abutment Drawings For Wing details.

STATE OF VERMONT
DEPARTMENT OF HIGHWAYS

PROJECT BERLIN - MONTPELIER
TOWNS OF BERLIN & MONTPELIER
ROUTE No. I 89 STA. 193+50+
I 89 OVER VT. 12
APPROACH SLAB PLANS AND DETAILS
SCALE AS NOTED
IN CHARGE W. SMITH
DRAWN BY W. TRIPP CHECKED BY R. LADD
PROJECT No. I 89-1120 (50)
SHEET 100 OF 104 BR. 423