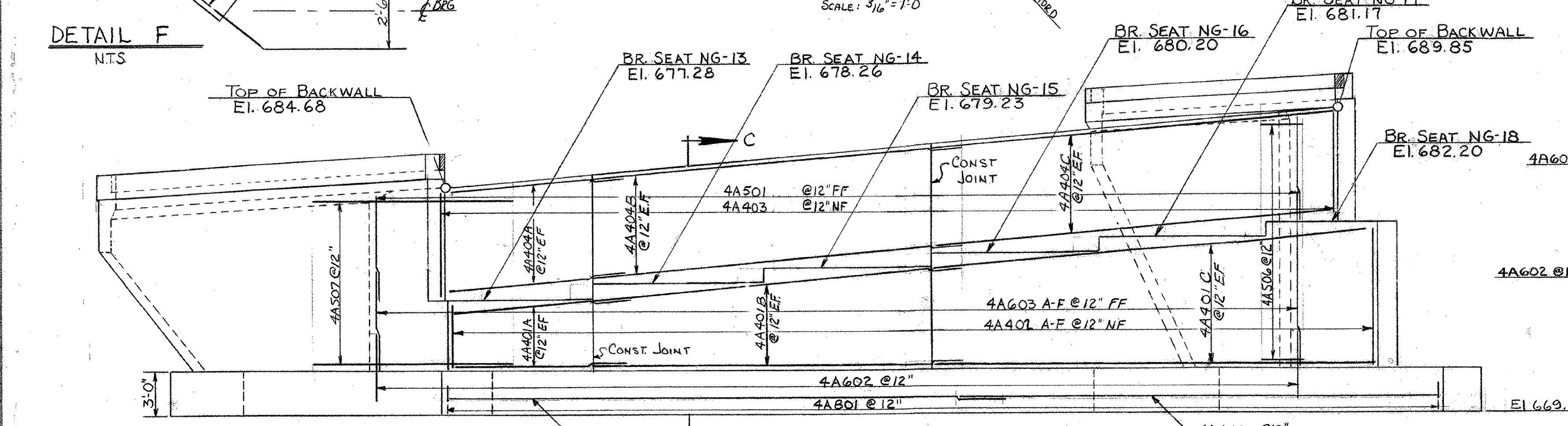
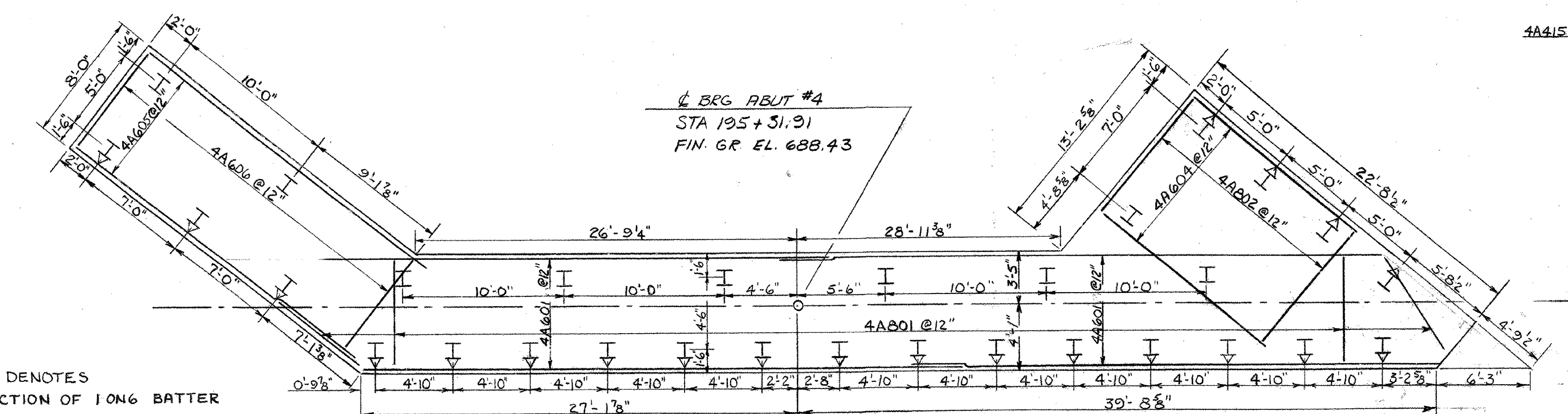


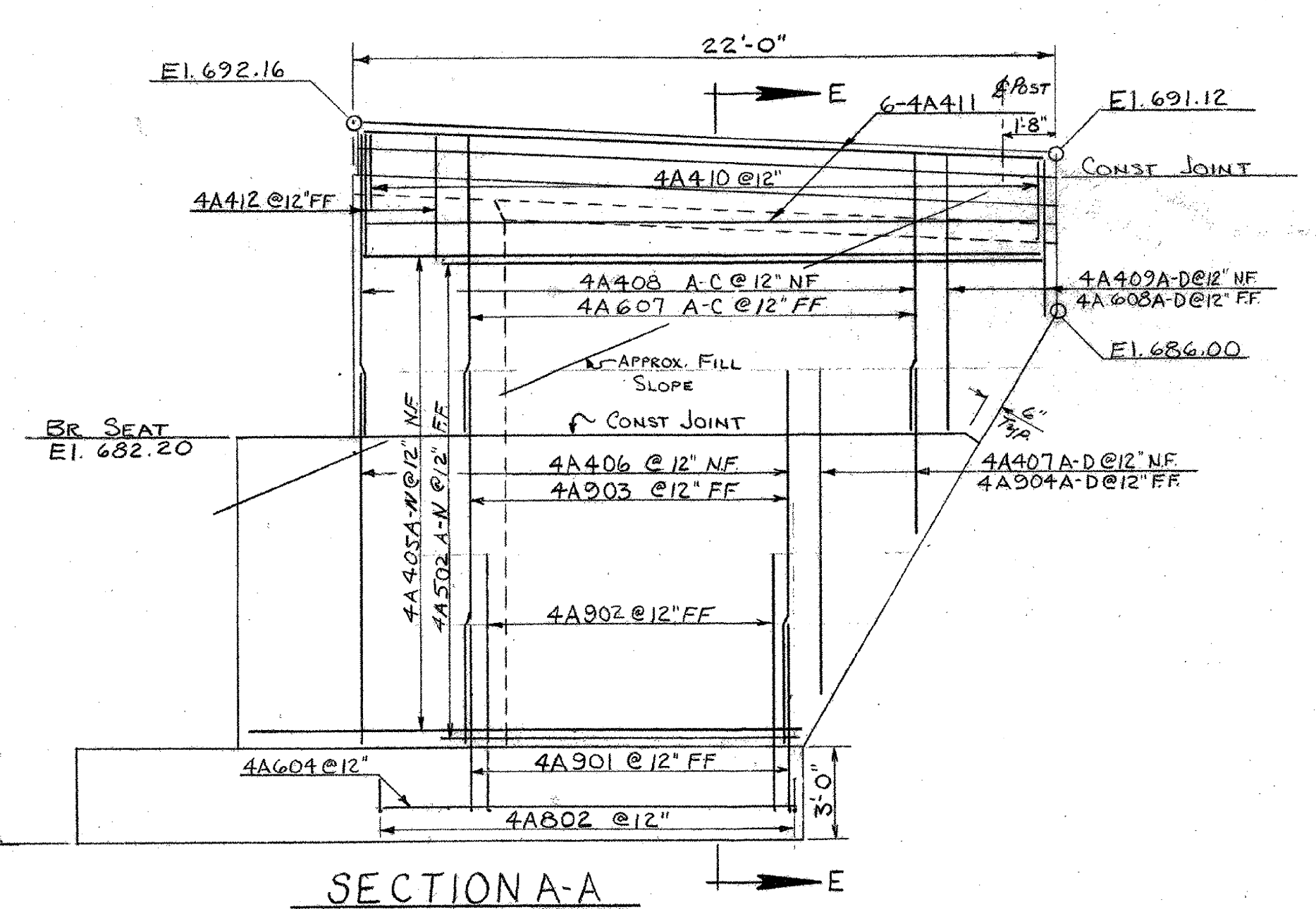
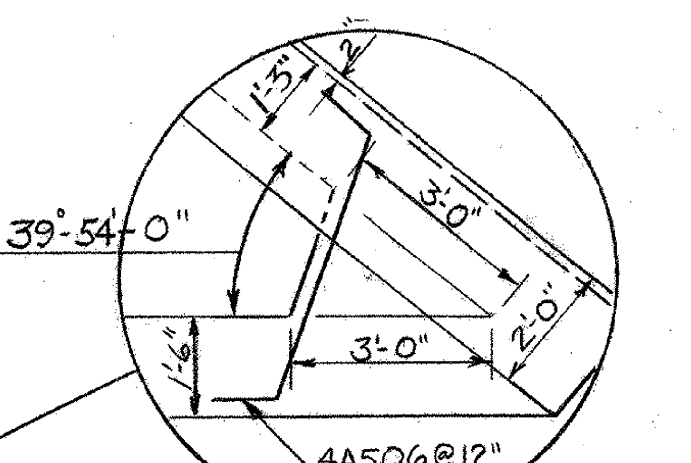
PLAN
SCALE: 3/16" = 1'-0"



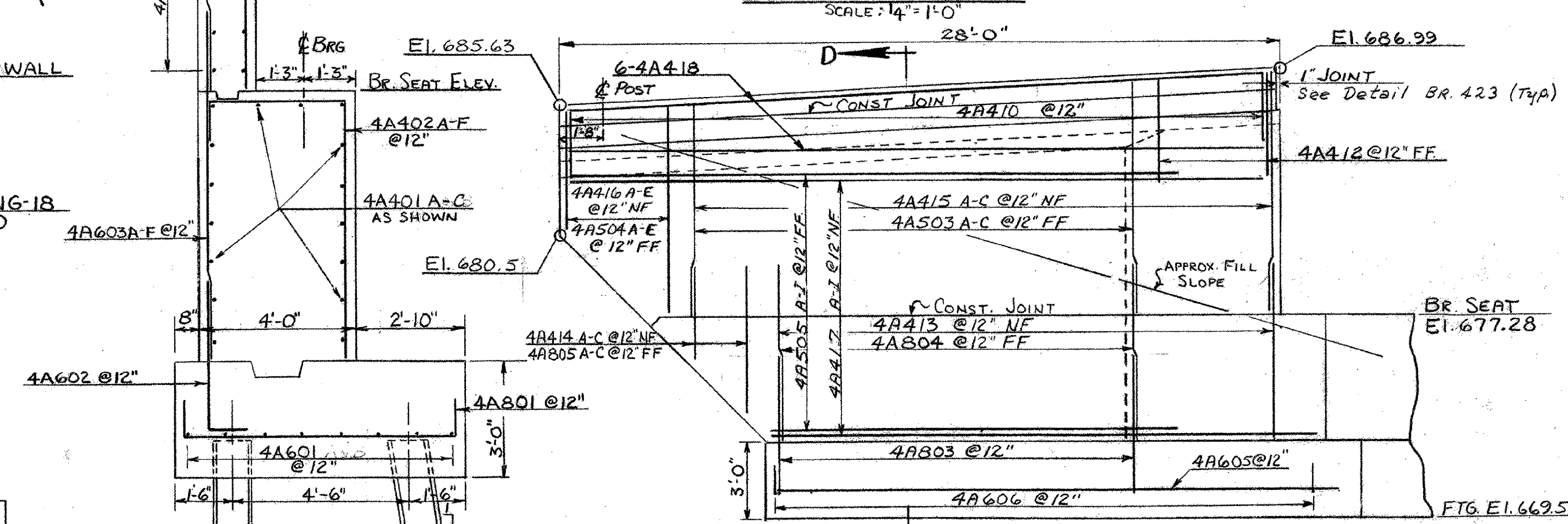
ELEVATION
SCALE: 3/16" = 1'-0"



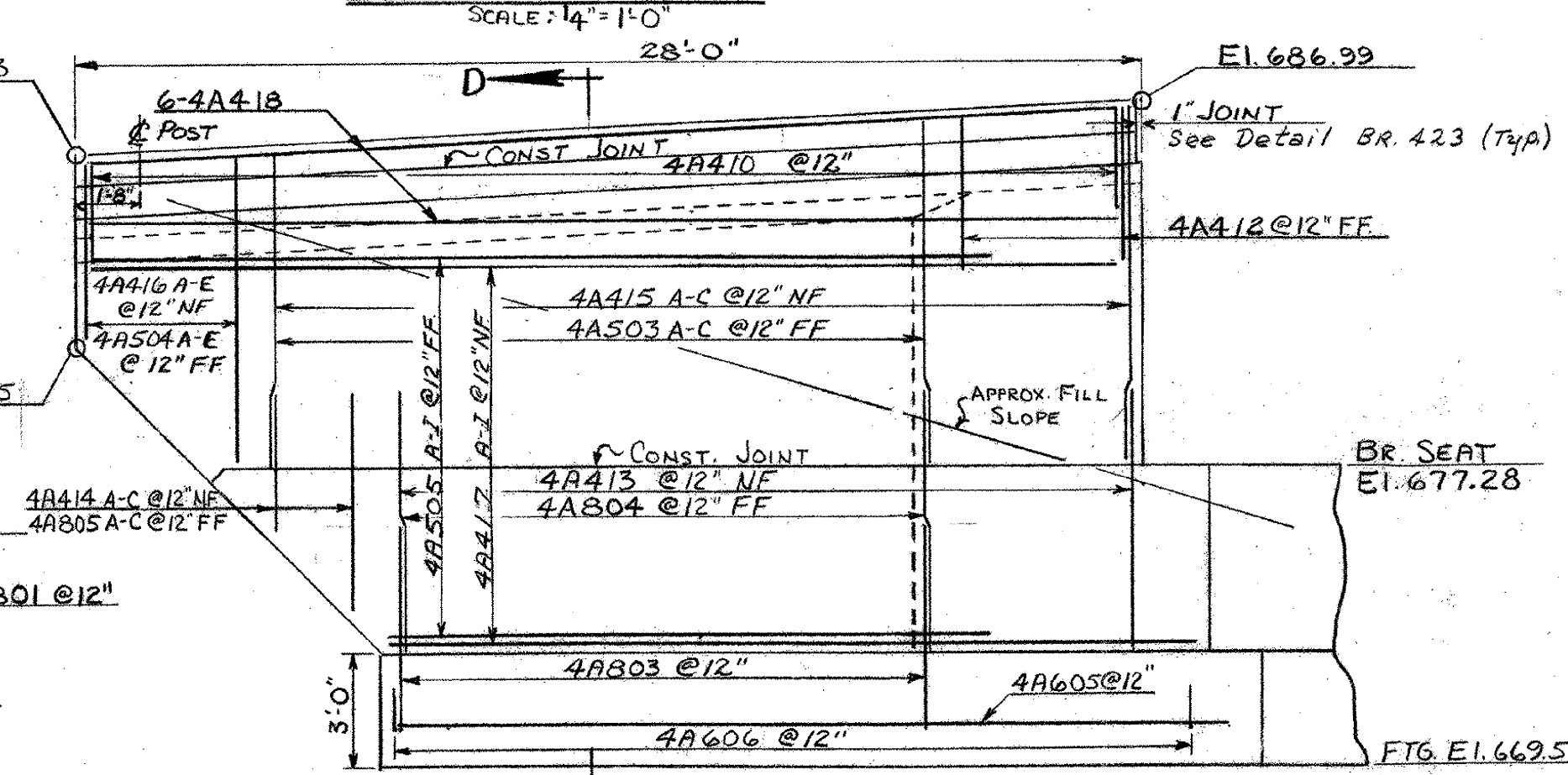
FOOTING REINFORCEMENT & PILING LAYOUT
SCALE: 3/16" = 1'-0"



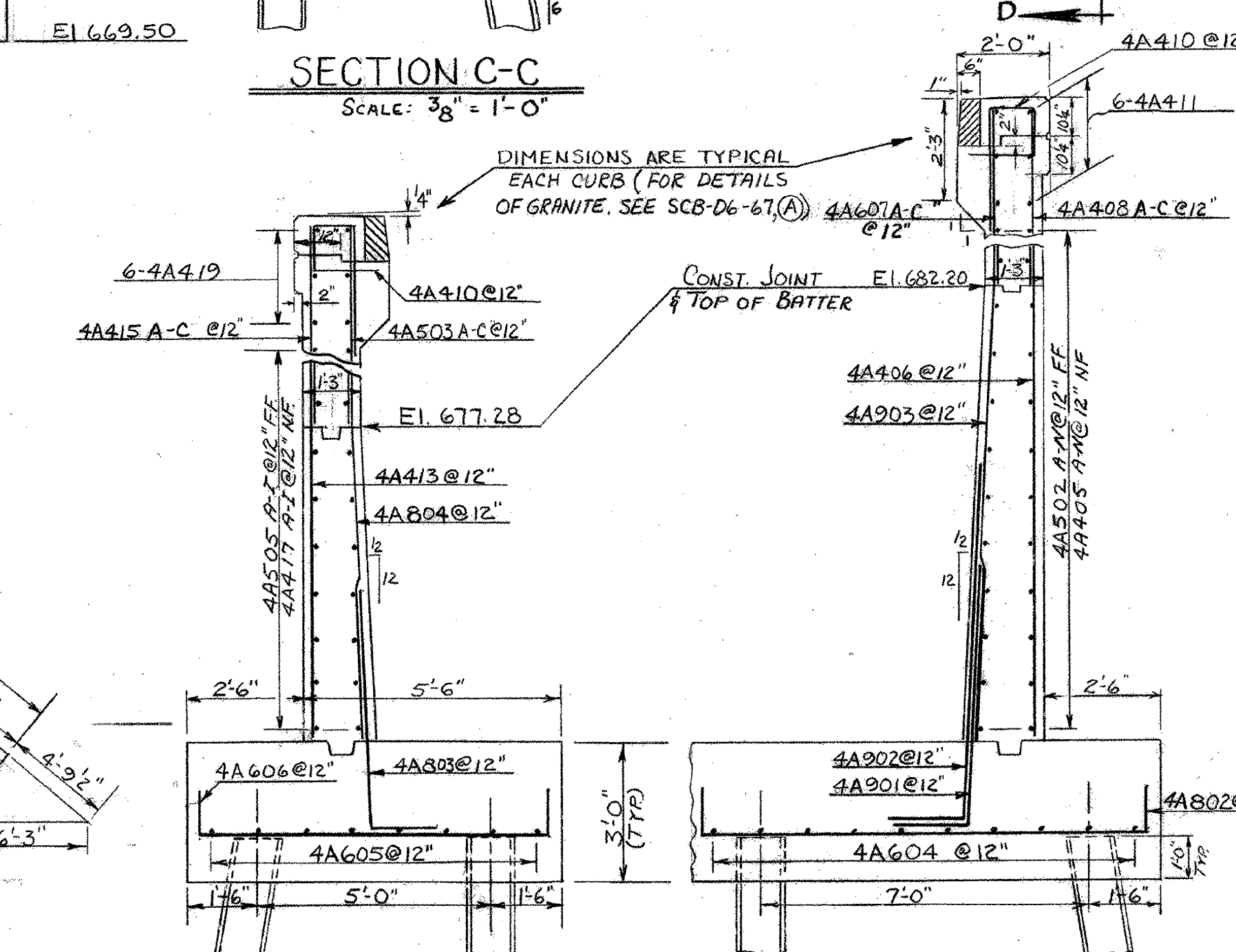
SECTION A-A
SCALE: 1/4" = 1'-0"



SECTION C-C
SCALE: 3/8" = 1'-0"



SECTION B-B
SCALE: 1/4" = 1'-0"



SECTION D-D
SCALE: 3/8" = 1'-0"

SECTION E-E
SCALE: 3/8" = 1'-0"

NOTE: ▽ DENOTES DIRECTION OF 10% BATTER

30-12BP53 STEEL PILES
MAX. LOAD = 45 TONS
EST. LENGTH = 40'

DIMENSIONS ARE TYPICAL EACH CURB (FOR DETAILS OF GRANITE, SEE SCB-D6-67(A) 4A601A-C @ 12"

THIS SHEET FOR REFERENCE ONLY
BERLIN 1089-1(20)
BRIDGES 40 N&S
SHEET 95 OF 104

FOR ABUT. NOTES SEE BR-416

STATE OF VERMONT
DEPARTMENT OF HIGHWAYS

PROJECT BERLIN-MONTPELIER
TOWNS OF BERLIN & MONTPELIER
ROUTE No. 189 STA. 193+50.2
189 OVER VT. RTE 12
ABUTMENT #4

SCALE AS NOTED
IN CHARGE W. SMITH
DRAWN BY R. LADD CHECKED BY W. TRIPP
PROJECT No. 189-1(12)
SHEET 102 OF 127 BR-416