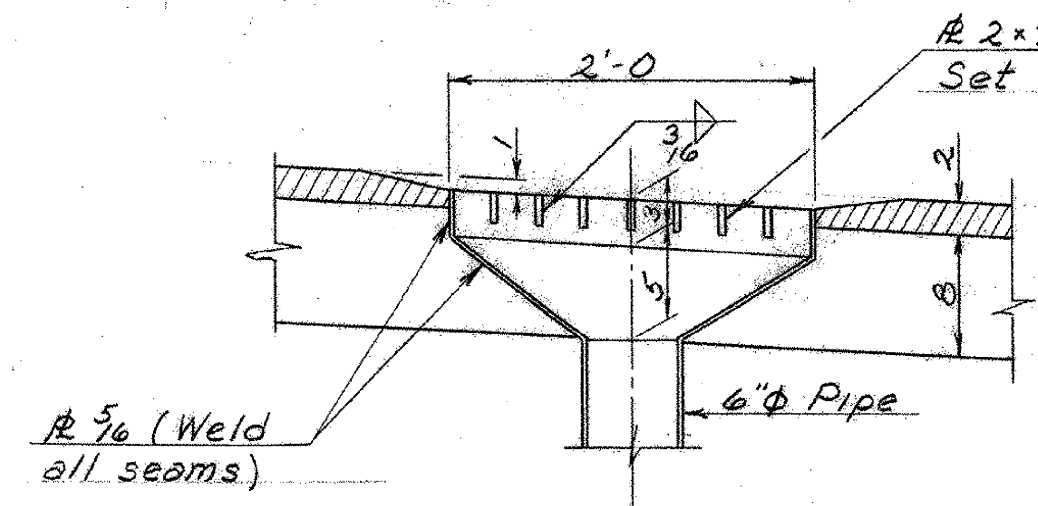


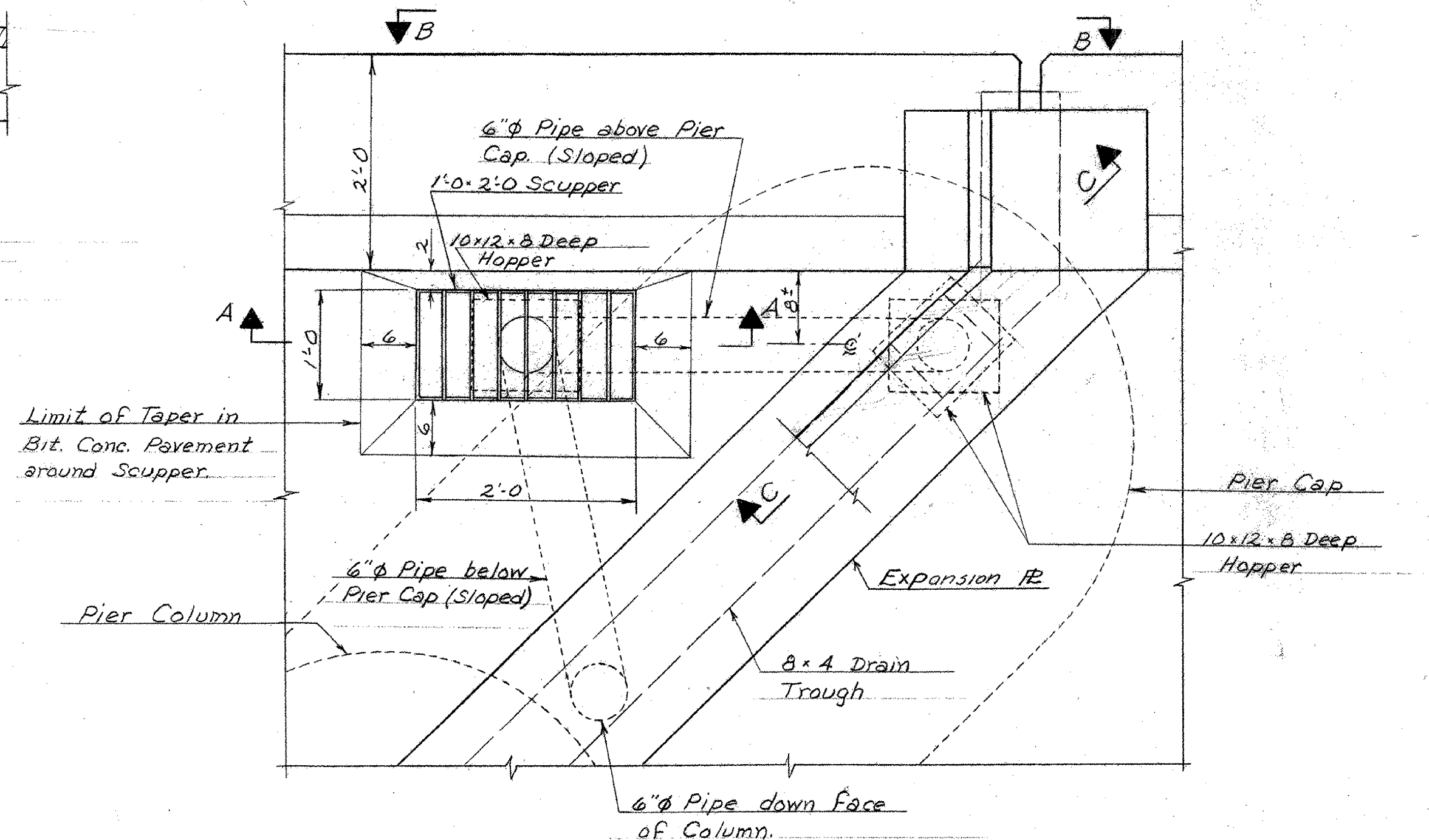
TYPICAL EXPANSION R DETAIL
SCALE: 1/2" = 1'-0"

Table of Dimensions

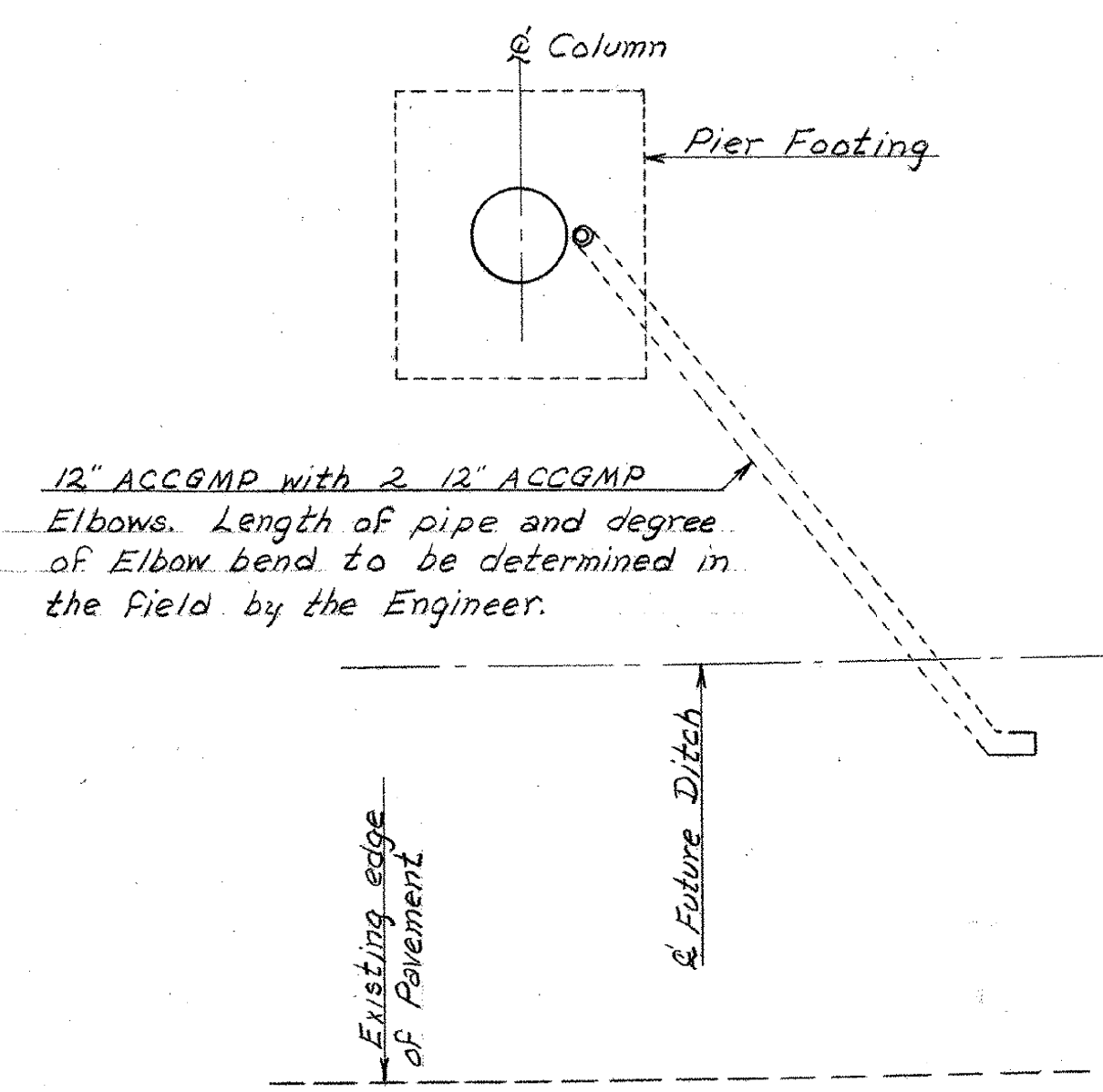
Pier No.	Angle A	Angle B	Length C	Length D
1	52°-9'-50"	47°-0'-0"	20'-11 1/4"	29'-0 7/16"
2	47°-0'-0"	41°-50'-20"	22'-9"	31'-8"
3	52°-2'-50"	47°-0'-0"	28'-9 3/8"	21'-1 1/4"
4	47°-0'-0"	41°-57'-10"	31'-2 1/16"	22'-11 1/2"



SECTION A-A
SCALE: 1" = 1'-0"

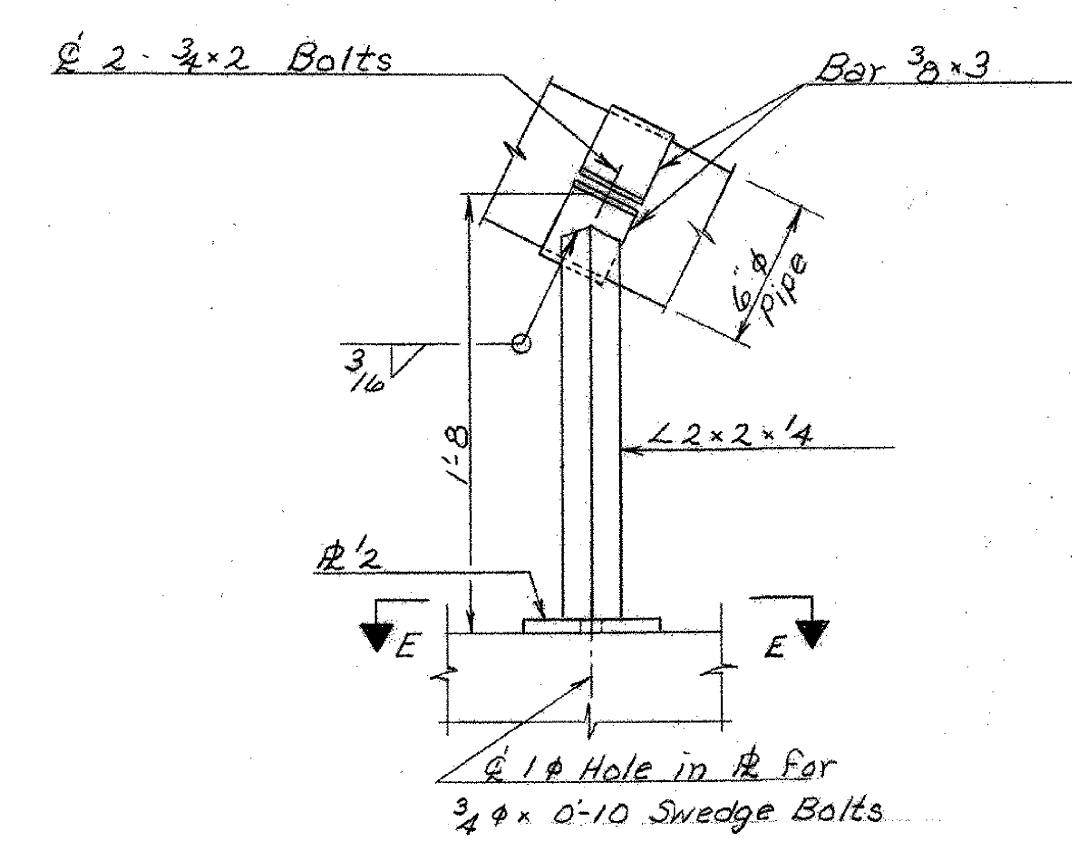


TYPICAL PLAN OF EXP. PLATE & SCUPPER AT LOW END OF PIER JOINT
SCALE: 1" = 1'-0"

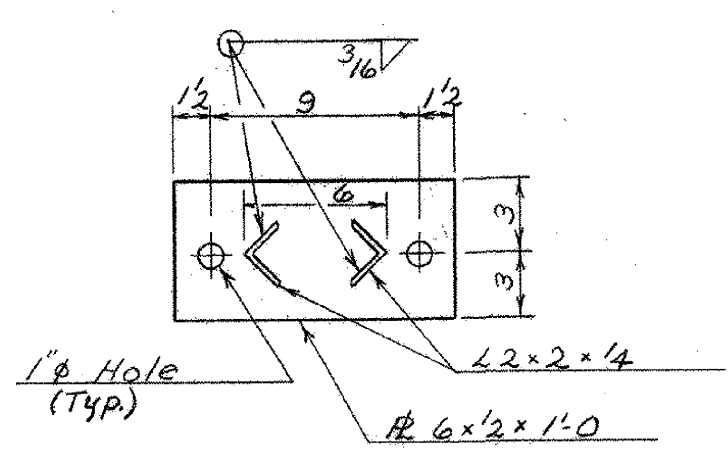


SECTION F-F
SCALE: 1/8" = 1'-0"

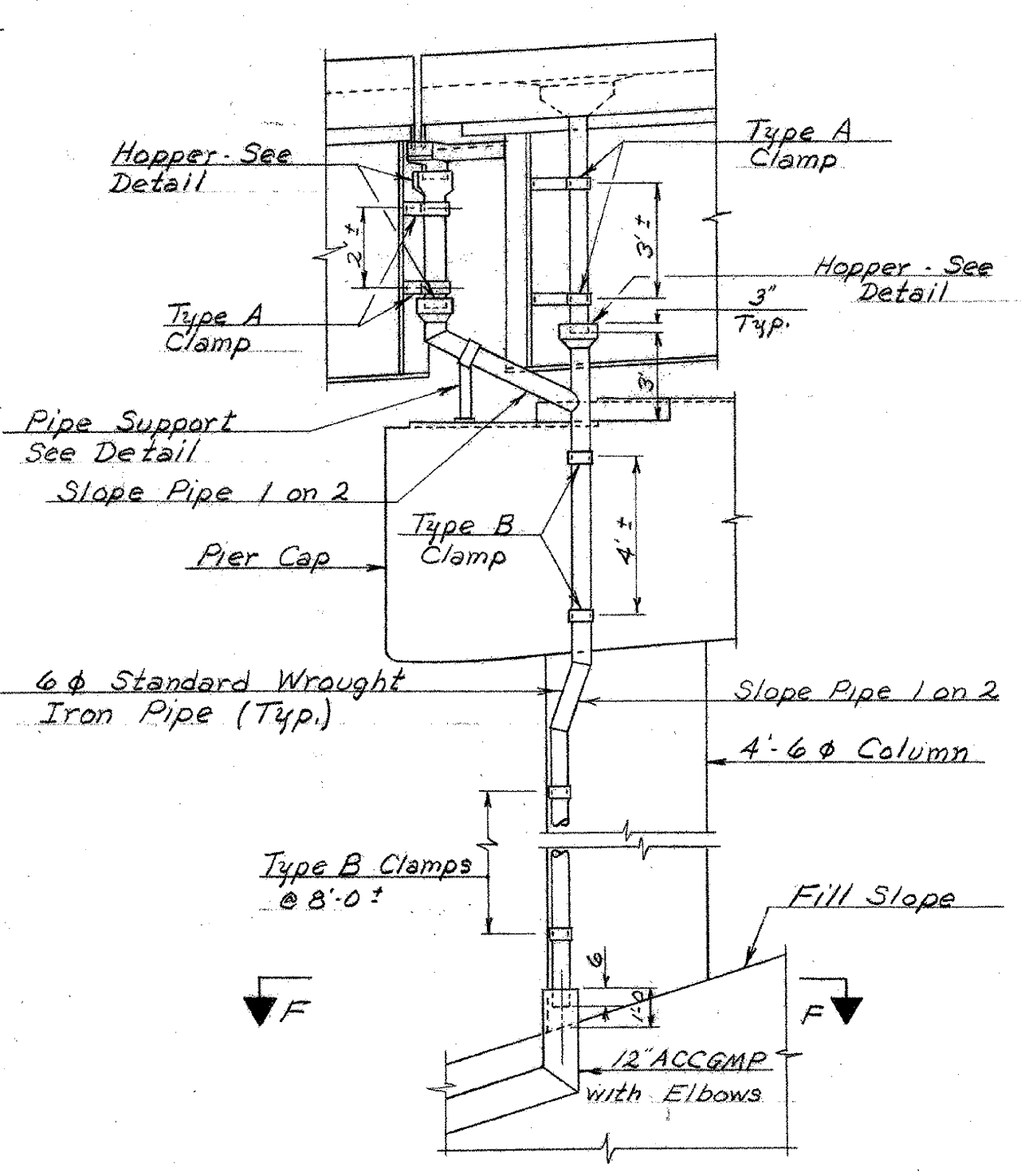
(SECTION IS SHOWN FOR PIERS #1 & #3; DETAILS ARE SIMILAR FOR PIERS #2 & #4.)



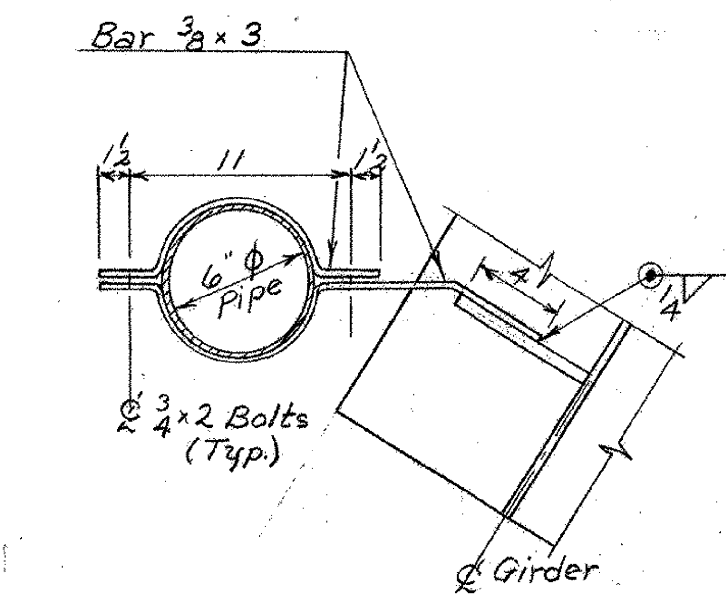
PIPE SUPPORT DETAIL
SCALE: 1/2" = 1'-0"



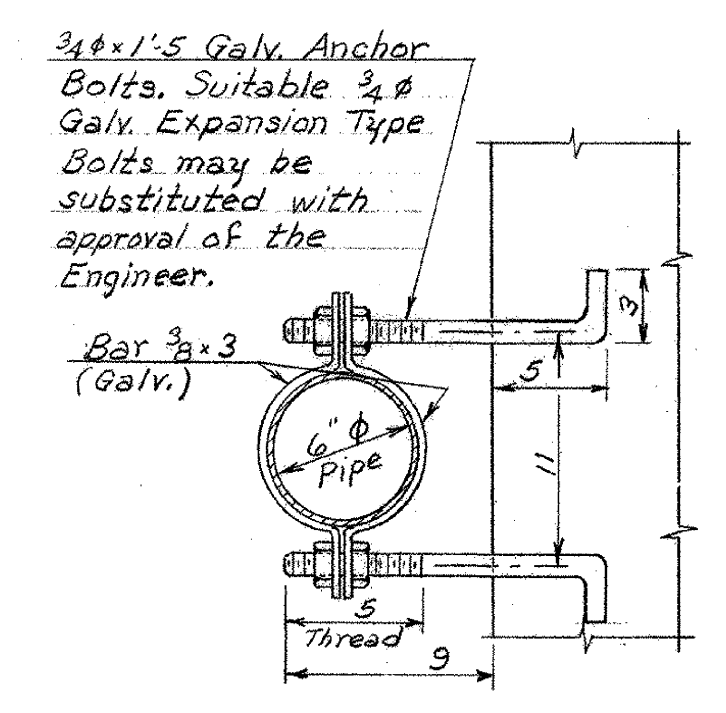
SECTION E-E
SCALE: 1/2" = 1'-0"



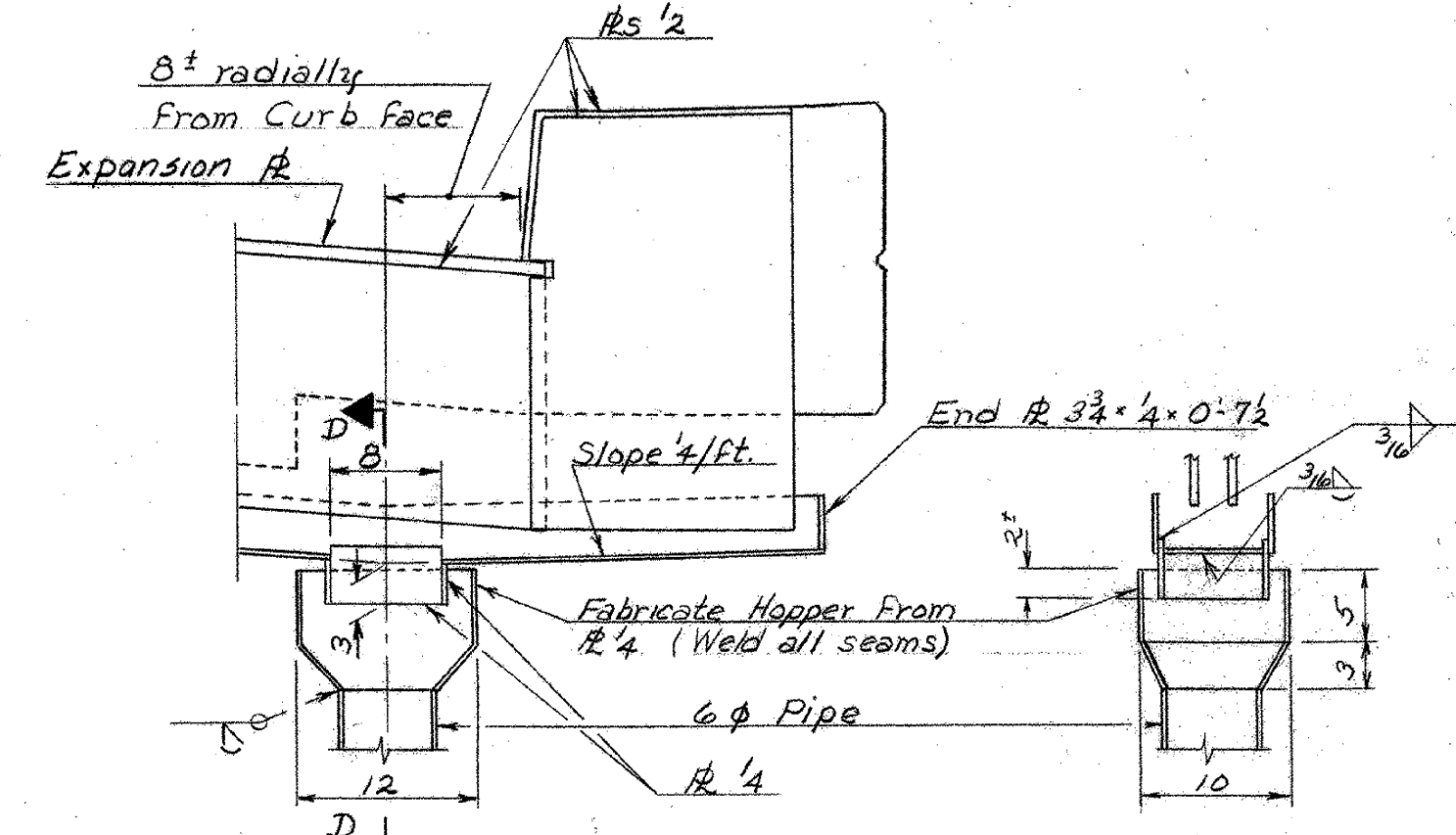
ELEVATION B-B
SCALE: 1/4" = 1'-0"



CLAMP DETAIL - TYPE A
SCALE: 1/2" = 1'-0"



CLAMP DETAIL - TYPE B
SCALE: 1/2" = 1'-0"



SECTION C-C
SCALE: 1" = 1'-0"

SECTION D-D
SCALE: 1" = 1'-0"

NOTE: HOPPER DETAILS SHOWN ABOVE ARE TYPICAL FOR ALL HOPPERS

THIS SHEET FOR REFERENCE ONLY
BERLIN IM 089-1(20)
BRIDGES 40 N&S
SHEET 90 OF 104

NOTE: SEE BR. 412 FOR NOTES

STATE OF VERMONT
DEPARTMENT OF HIGHWAYS

PROJECT BERLIN - MONTPELIER
TOWNS OF BERLIN & MONTPELIER

ROUTE NO. I 89 STA. 193+50±
I 89 OVER VT. 12

FINGER R AND DRAINAGE DETAILS
SCALE AS NOTED

IN CHARGE W. SMITH

DRAWN BY W. TRIPP CHECKED BY R. LADD
PROJECT NO. I 89 (30)
SHEET 90 OF 104 BR. 413