

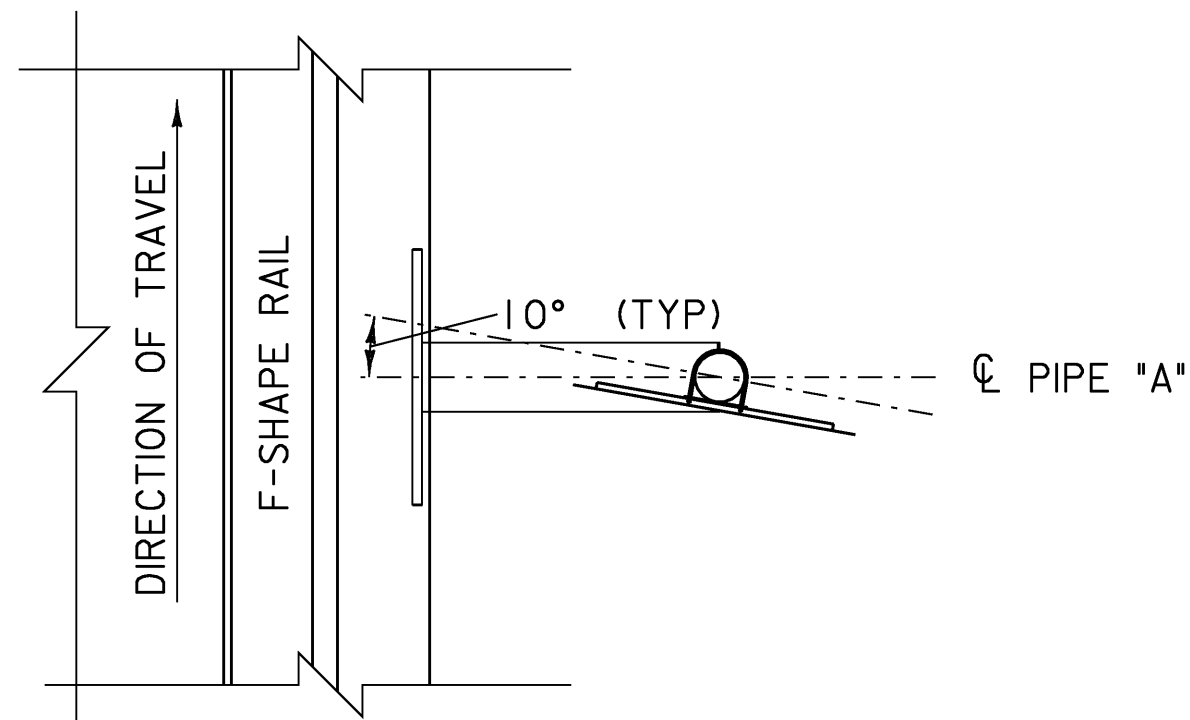
NOTE:  
FRICTION CAPS-MANUFACTURED FROM HOT OR COLD ROLLED STEEL SHEETS. SIZED FOR DRIVE FRICTION FIT, AND SO FORMED AS TO HAVE NO TENDENCY TO ROCK WHEN SEATED. THEY SHALL BE FREE OF SHARP INDENTATIONS AND EVIDENCE OF METAL FRACTURE, WITH RIMS REASONABLY STRAIGHT AND SMOOTH.

PIPE SIZES		
SIGN AREA S.F.	PIPE "A" SIZE	PIPE "B" SIZE
12	8.625" O. D. x 0.332" W. T.	4.500" O. D. x 0.337" W. T.

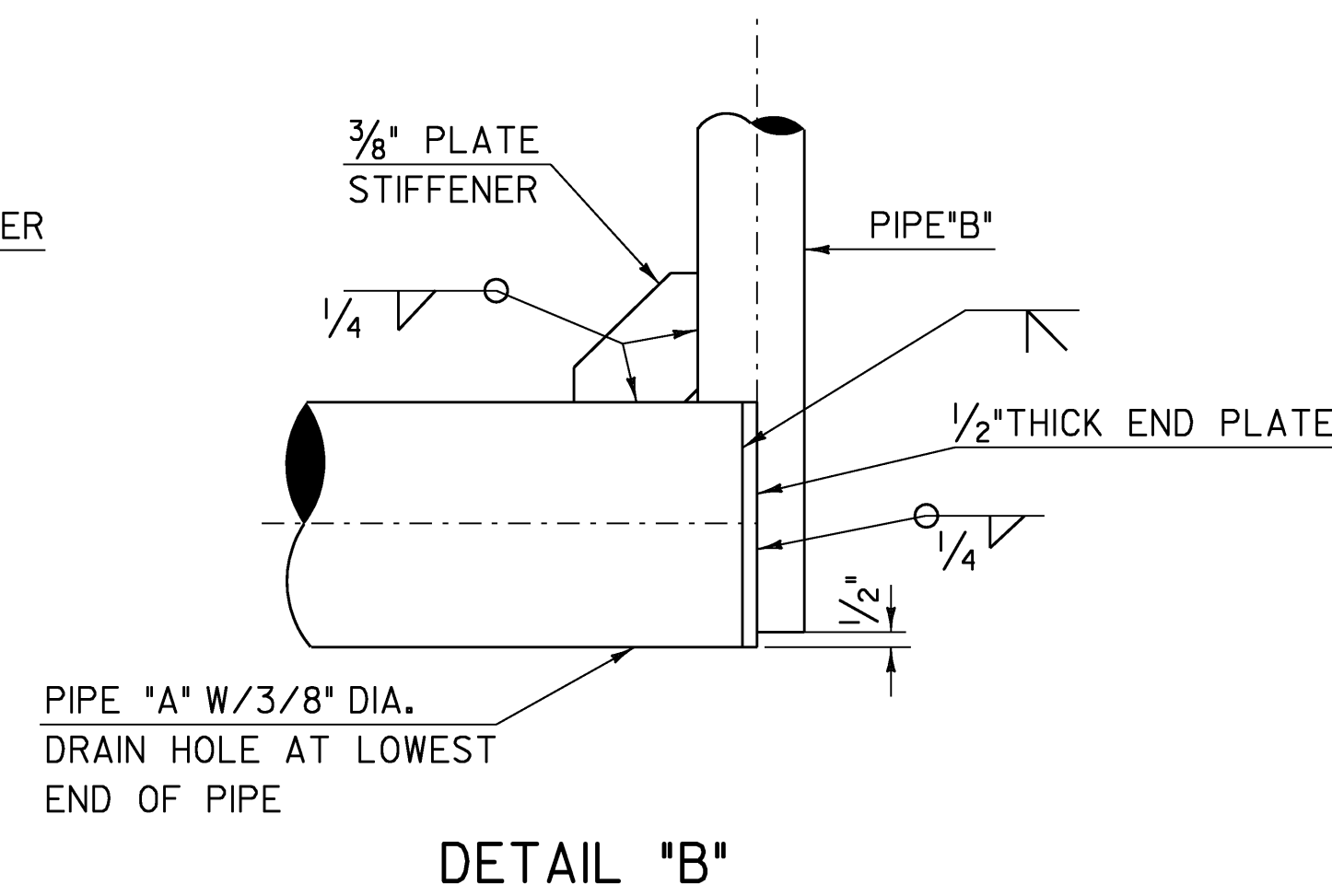
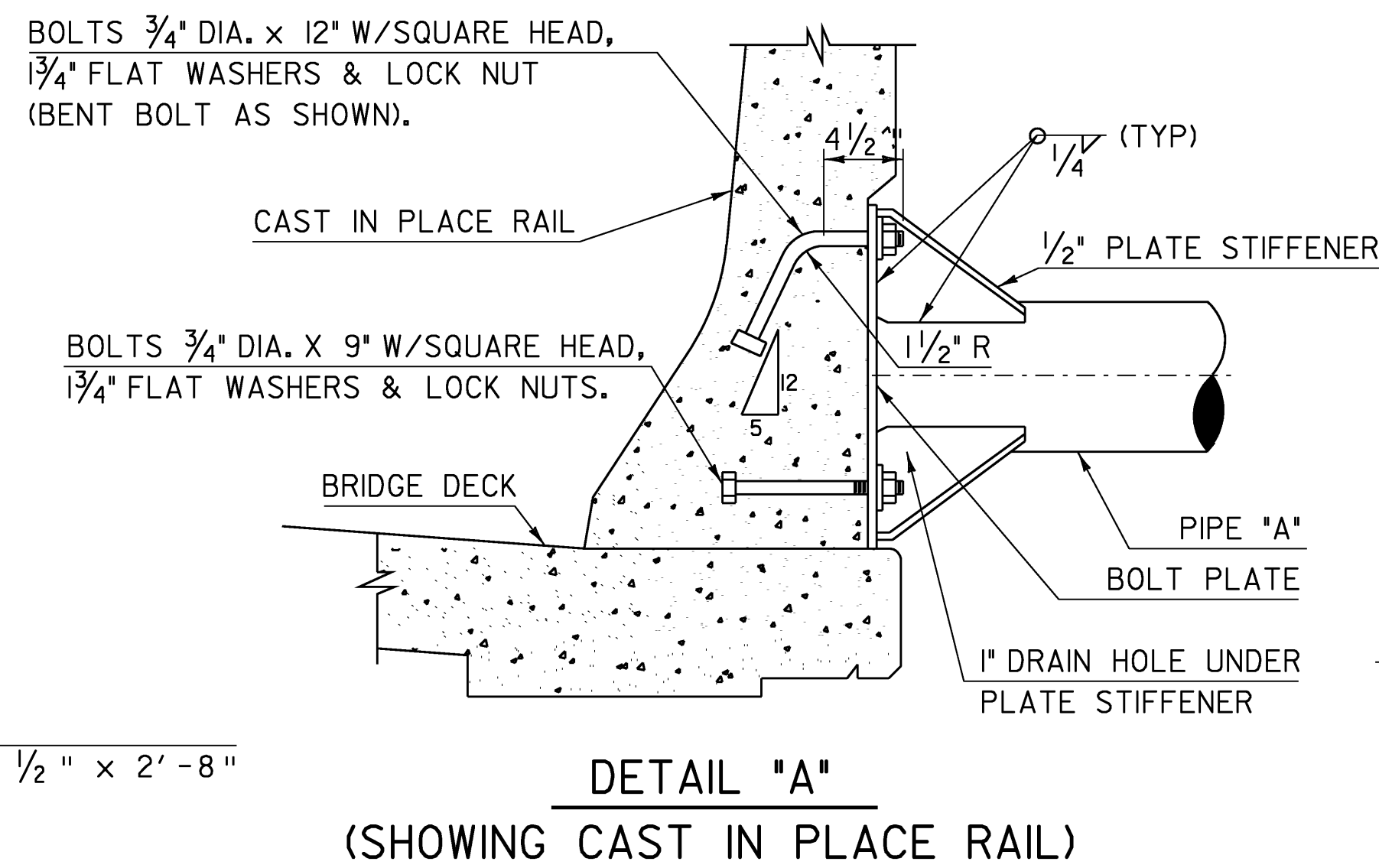
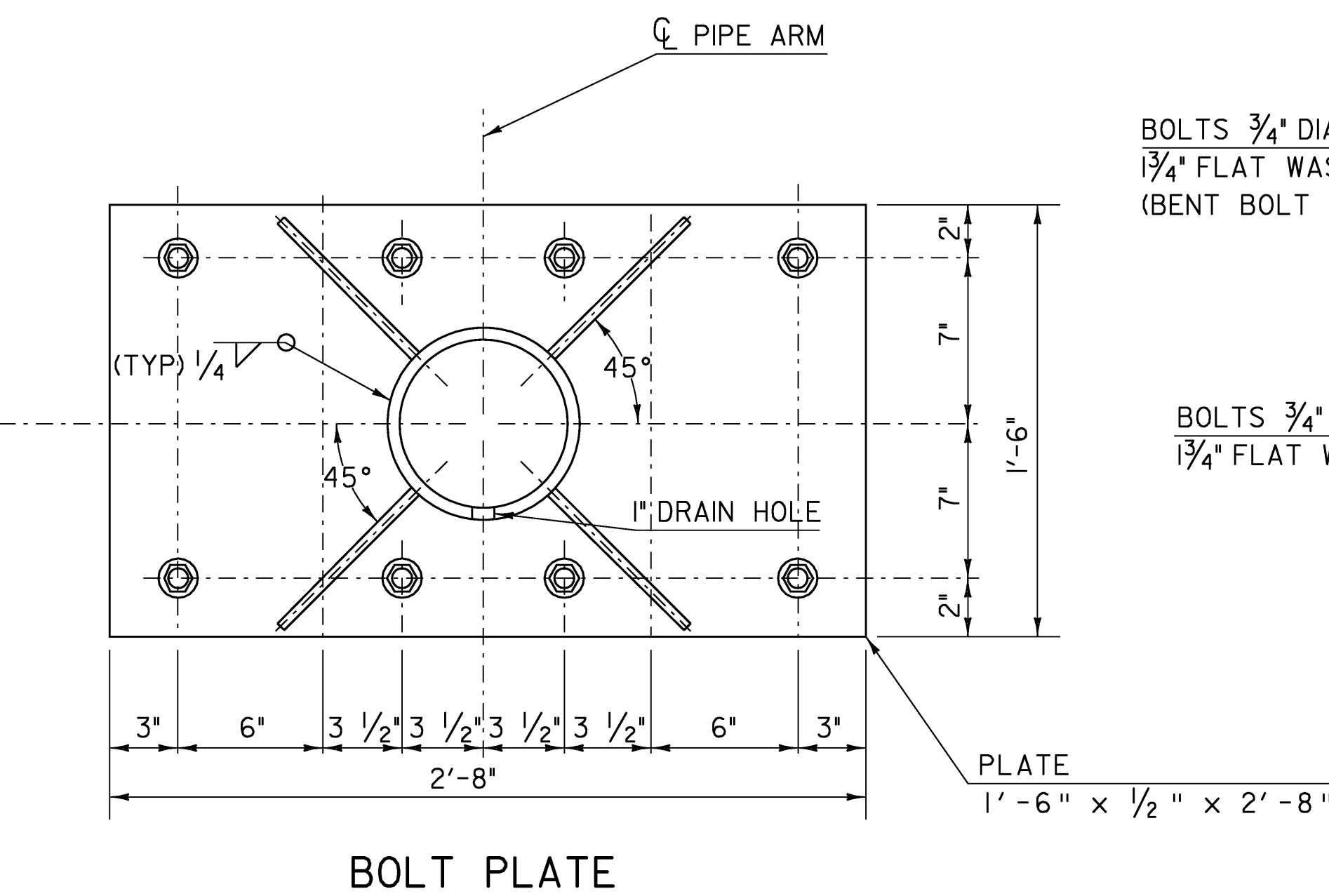
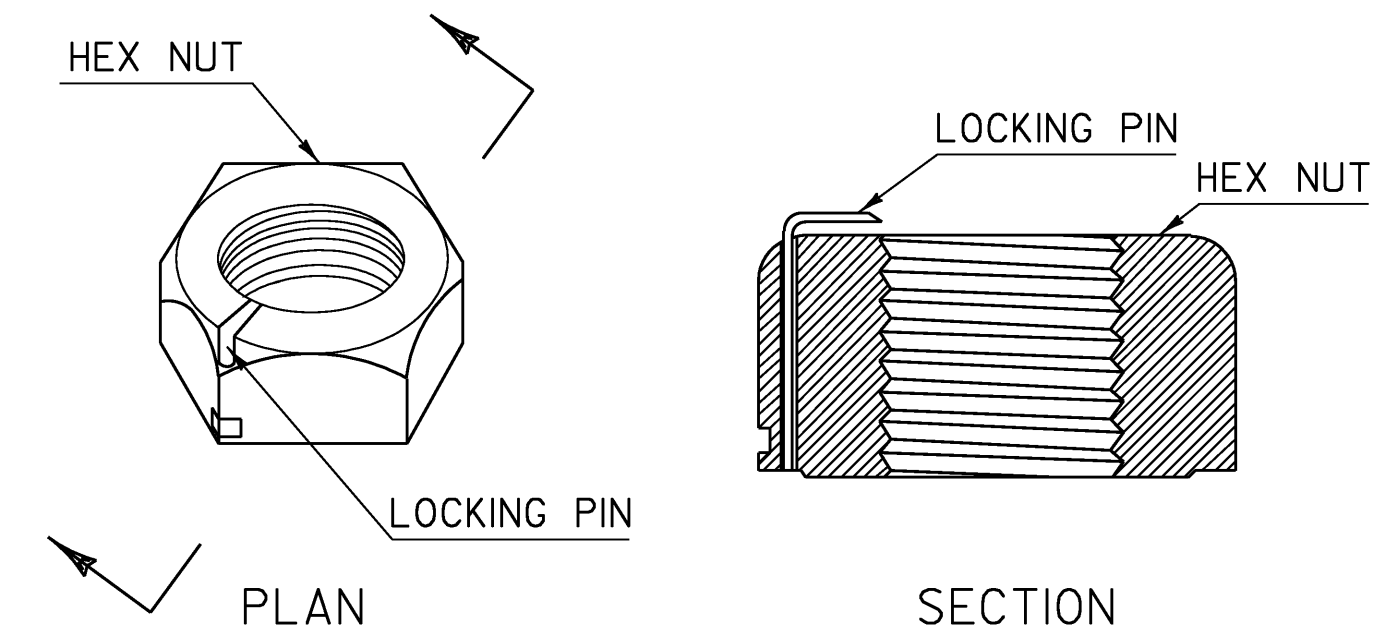
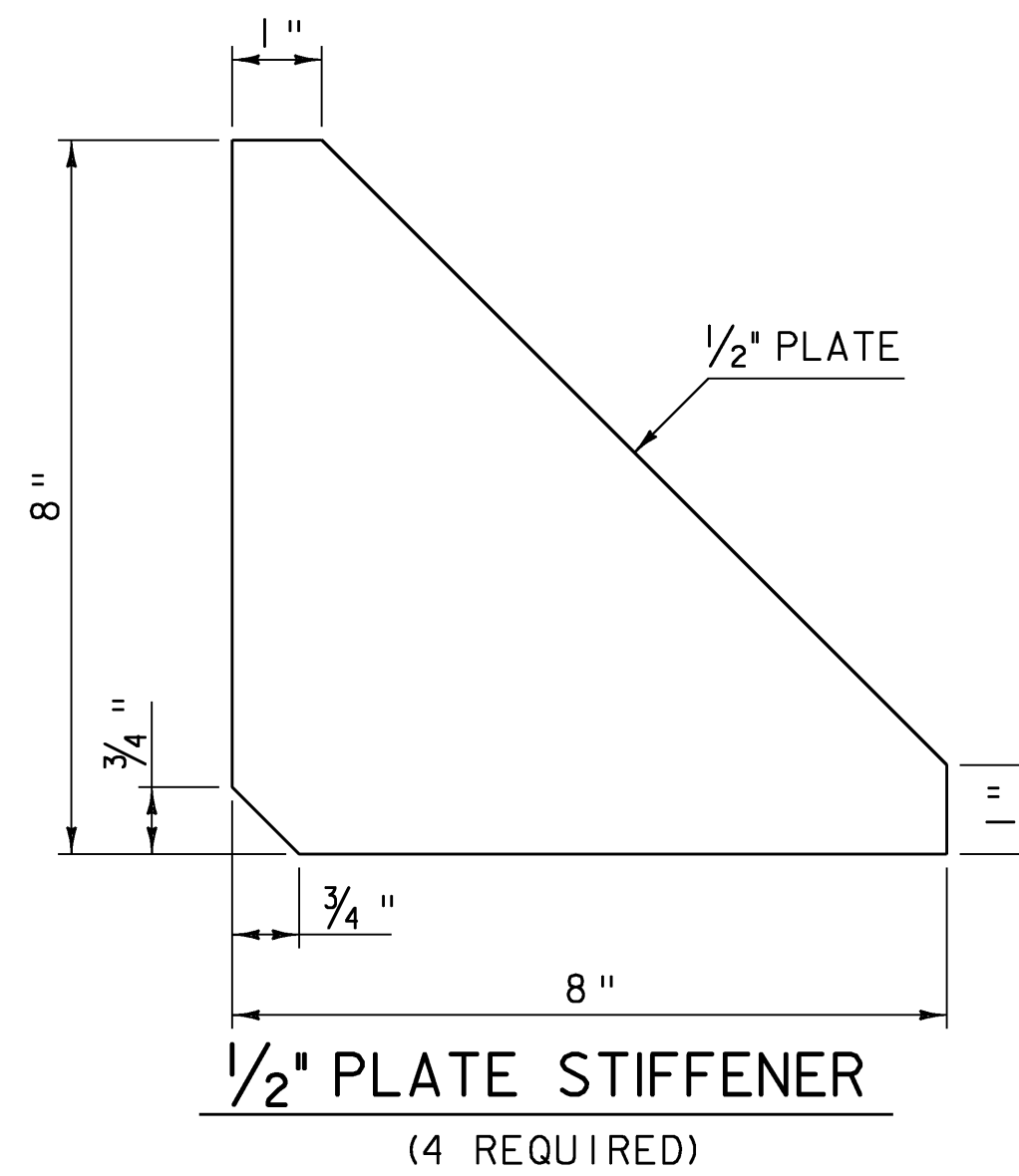
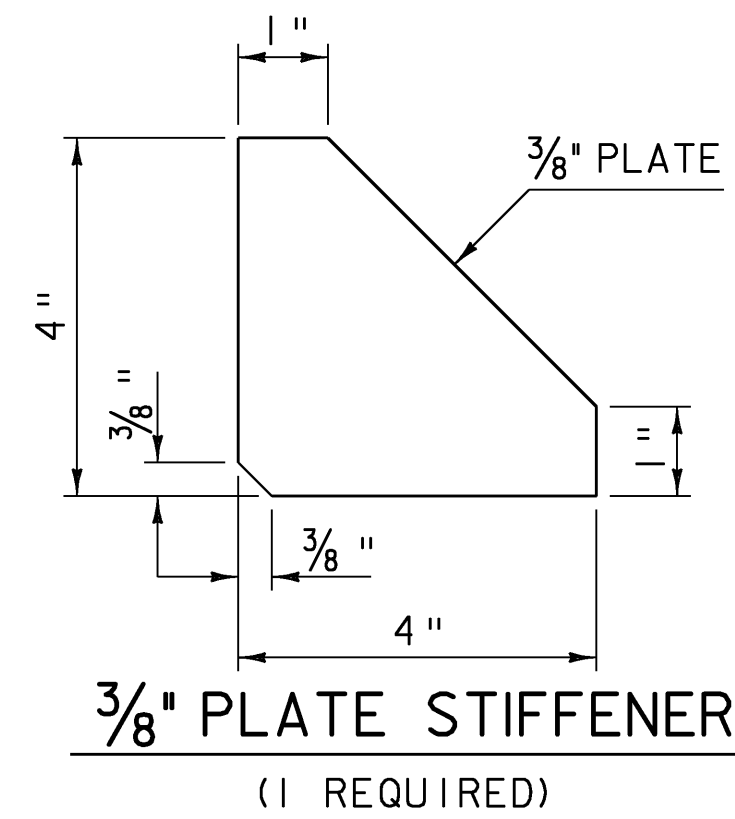
**NOTES:**

- FABRICATE SIGN MOUNTS SO SIGN SUPPORT PIPE IS VERTICAL.
- SIGN PANELS SHALL BE ATTACHED TO THE 2" HSS PIPE CLAMPS AND 4 1/2" DIA. PIPE ARM AS SHOWN.
- LOCK NUTS WITH NON-REVERSIBLE HIGH TENSILE STRENGTH STAINLESS STEEL LOCKING PINS SHALL BE USED ON BOLTS.
- THE BOLTS SHALL BE A307, AND SHALL NOT BE LESS THAN 4 1/2" IN LENGTH.
- PIPE AND STRUCTURAL TUBING FOR THE SIGN SUPPORT SHALL BE ASTM A500, GRADE B. PLATES SHALL BE ASTM A572, GRADE 50.
- SIGN SUPPORTS SHALL BE GALVANIZED AFTER FABRICATION ACCORDING TO SUBSECTION 516.04.
- TOOLS, LABOR, AND MATERIALS OR ANY OTHER INCIDENTALS NECESSARY TO EFFECT THE INSTALLATION OF THE SIGN SUPPORT TO THE CONCRETE BRIDGE RAIL SHALL BE PAID FOR UNDER THE ITEM 506.60, "STRUCTURAL STEEL".

**BRIDGE MOUNTED SIGNS**



**BRIDGE MOUNTED SIGN FACING**



**SIGN SUPPORT DETAILS**

(FOR W-1-8 CHEVRON SIGNS)  
(2 SIGN SUPPORTS REQUIRED)

NOTE: SEE LAYOUT NORTHBOUND 2 SHEET 15 FOR LOCATIONS  
ALL DIMENSIONS NTS

PROJECT: BERLIN	PROJECT NO.: IM 089-1 (20)
DESIGN FILE NAME: 99a270\structures\99a270sign post rail.dgn	PLOT DATE: 05-DEC-2007
IPARM FILE NAME: s99a270fsign.i	DRAWN BY: M.FESSEL
DESIGNED BY: R. S. YOUNG	CHECKED BY: R. S. YOUNG
SQUAD LEADER: C.P. WILLIAMS	BRIDGE MOUNTED SIGN DETAILS
	SHEET: 62 OF 104